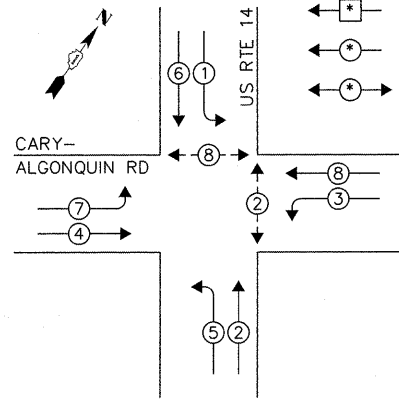


CONTROLLER SEQUENCE

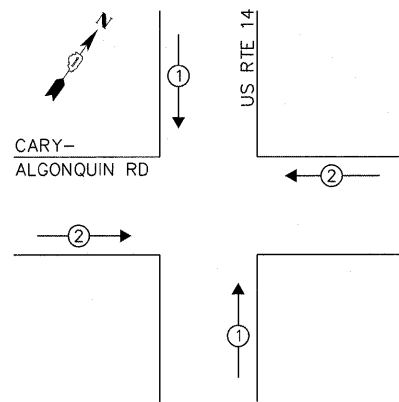
LEGEND:

- ◻ SINGLE ENTRY PHASE
- ◉ DUAL ENTRY PHASE
- ◉ PEDESTRIAN PHASE



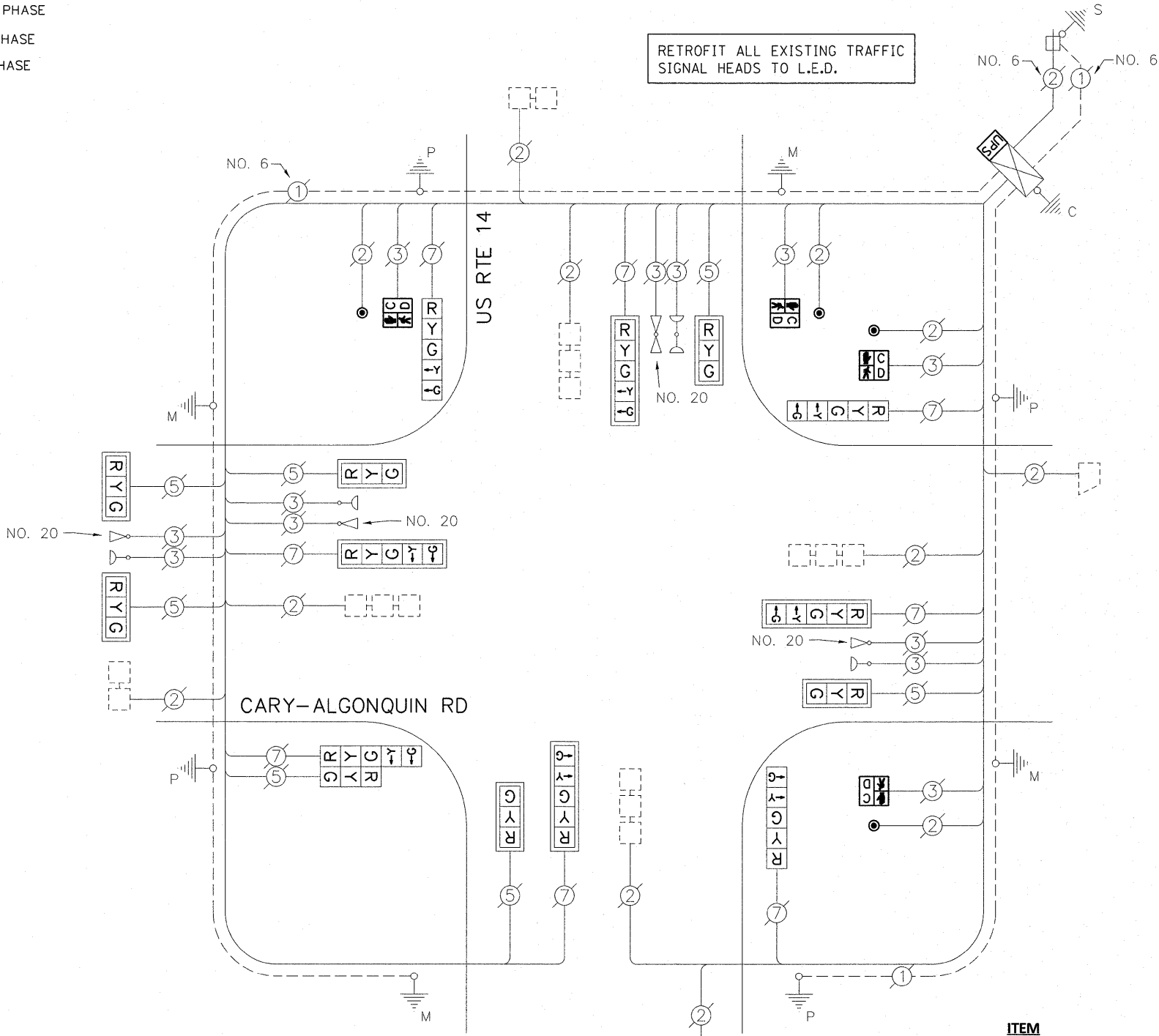
PHASE DESIGNATION DIAGRAM

EMERGENCY VEHICLE PREEMPTION SEQUENCE



EXISTING EMERGENCY VEHICLE PREEMPTORS		
EMERGENCY VEHICLE PREEMPTOR	1	2
MOVEMENT	↑	→

RETROFIT ALL EXISTING TRAFFIC SIGNAL HEADS TO L.E.D.



CABLE PLAN

THE FOLLOWING ITEMS SHALL BE REMOVED BY THE CONTRACTOR AND SHALL BE DISPOSED OF BY THEM OUTSIDE THE RIGHT-OF-WAY AT THEIR EXPENSE. THE SALVAGE VALUE OF THE REMOVED EQUIPMENT SHALL BE REFLECTED IN THE CONTRACT BID PRICE.

- 4 EACH PEDESTRIAN SIGNAL HEAD
- 4 EACH PEDESTRIAN PUSH-BUTTON

I.D.O.T. TRAFFIC SIGNAL INSTALLATION ELECTRICAL SERVICE REQUIREMENTS					TOTAL WATTAGE
TYPE	NO. OF LAMPS	WATTAGE		% OPERATION	
SIGNAL (RED)	15	INCAND.	LED	0.50	127.50
(YELLOW)	15		25	0.25	93.75
(GREEN)	15		15	0.25	56.25
ARROW	16		12	0.10	19.20
PED. SIGNAL	4		25	1.00	100.00
CONTROLLER	1		100	1.00	100.00
ILLUM. SIGN	-		25	0.05	-
VIDEO SYSTEM	-		-	1.00	-
FLASHER				0.50	
ENERGY COSTS TO:				TOTAL =	496.70

VILLAGE OF CARY  
655 VILLAGE HALL DRIVE  
CARY, IL 60013  
ENERGY SUPPLY: CONTACT: MIKE LENOX  
PHONE: (815) 490-2869  
COMPANY: COMMONWEALTH EDISON

ITEM	UNIT	QUANTITY
MAINTENANCE OF EXISTING TRAFFIC SIGNAL INSTALLATION	EACH	1
PEDESTRIAN SIGNAL HEAD, LED, 1-FACE, BM WITH COUNTDOWN TIMER	EACH	4
PEDESTRIAN PUSH-BUTTON	EACH	4
MODIFY EXISTING CONTROLLER CABINET	EACH	1
REMOVE EXISTING TRAFFIC SIGNAL EQUIPMENT	EACH	1
SIGNAL HEAD, LED, 2-FACE, 1-3 SECTION, 1-5 SECTION, BM, RETROFIT	EACH	1
SIGNAL HEAD, LED, 1-FACE, 3-SECTION, MAM, RETROFIT	EACH	4
SIGNAL HEAD, LED, 1-FACE, 5-SECTION, MAM, RETROFIT	EACH	4
SIGNAL HEAD, LED, 1-FACE, 3-SECTION, HORIZONTAL MOUNTED, RETROFIT	EACH	2
SIGNAL HEAD, LED, 1-FACE, 5-SECTION, BM, RETROFIT	EACH	3
UNINTERRUPTIBLE POWER SUPPLY SPECIAL	EACH	1