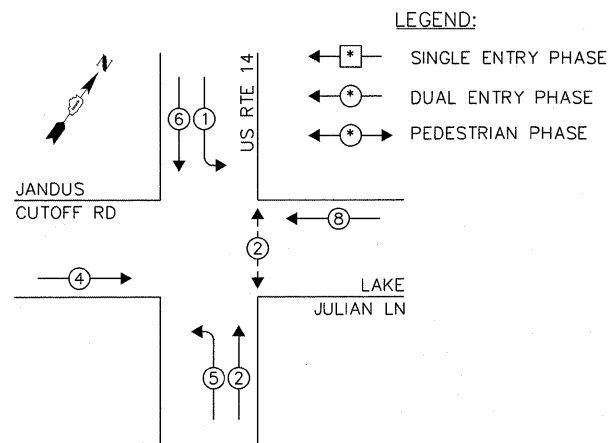
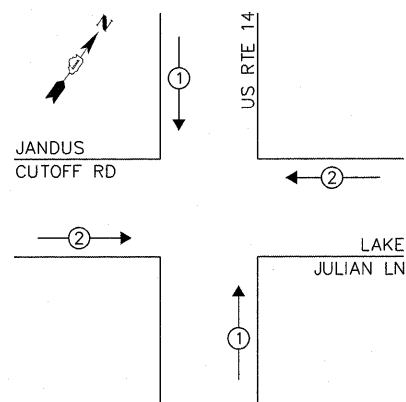


CONTROLLER SEQUENCE



PHASE DESIGNATION DIAGRAM

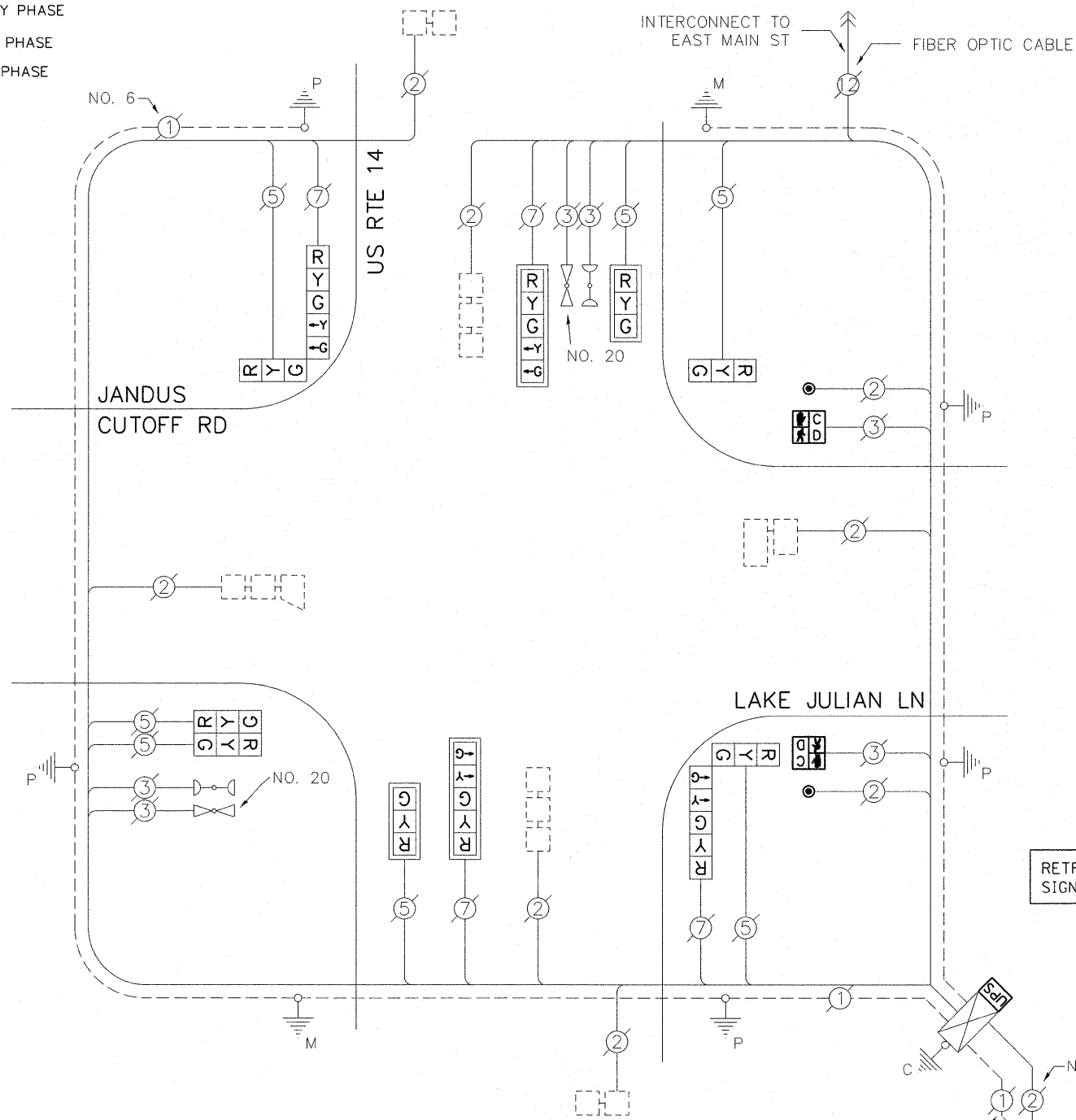
EMERGENCY VEHICLE PREEMPTION SEQUENCE



| EXISTING EMERGENCY VEHICLE PREEMPTORS | | |
|---------------------------------------|---|----|
| EMERGENCY VEHICLE PREEMPTOR | 1 | 2 |
| MOVEMENT | | == |

LEGEND:

- ◀*▶ SINGLE ENTRY PHASE
- ◀◦▶ DUAL ENTRY PHASE
- ◀◦▶ PEDESTRIAN PHASE



CABLE PLAN

THE FOLLOWING ITEMS SHALL BE REMOVED BY THE CONTRACTOR AND SHALL BE DISPOSED OF BY THEM OUTSIDE THE RIGHT-OF-WAY AT THEIR EXPENSE. THE SALVAGE VALUE OF THE REMOVED EQUIPMENT SHALL BE REFLECTED IN THE CONTRACT BID PRICE.

- 2 EACH PEDESTRIAN SIGNAL HEAD
- 2 EACH PEDESTRIAN PUSH-BUTTON

RETROFIT ALL EXISTING TRAFFIC SIGNAL HEADS TO L.E.D.

| I.D.O.T. TRAFFIC SIGNAL INSTALLATION ELECTRICAL SERVICE REQUIREMENTS | | | | | TOTAL WATTAGE |
|--|--------------|---------|-----|-------------|----------------|
| TYPE | NO. OF LAMPS | WATTAGE | | % OPERATION | |
| SIGNAL (RED) | 11 | INCAND. | LED | 0.50 | 93.50 |
| (YELLOW) | 11 | | 25 | 0.25 | 68.75 |
| (GREEN) | 11 | | 15 | 0.25 | 41.25 |
| ARROW | 8 | | 12 | 0.10 | 9.60 |
| PED. SIGNAL | 2 | | 25 | 1.00 | 50.00 |
| CONTROLLER | 1 | | 100 | 1.00 | 100.00 |
| ILLUM. SIGN | - | | 25 | 0.05 | - |
| VIDEO SYSTEM | - | | - | 1.00 | - |
| FLASHER | | | | 0.50 | |
| ENERGY COSTS TO: | | | | | TOTAL = 363.10 |

VILLAGE OF CARY
 655 VILLAGE HALL DRIVE
 CARY, IL 60013
 ENERGY SUPPLY: CONTACT: MIKE LENOX
 PHONE: (815) 490-2869
 COMPANY: COMMONWEALTH EDISON

| ITEM | UNIT | QUANTITY |
|--|------|----------|
| MAINTENANCE OF EXISTING TRAFFIC SIGNAL INSTALLATION | EACH | 1 |
| PEDESTRIAN SIGNAL HEAD, LED, 1-FACE, BM WITH COUNTDOWN TIMER | EACH | 2 |
| PEDESTRIAN PUSH-BUTTON | EACH | 2 |
| MODIFY EXISTING CONTROLLER CABINET | EACH | 1 |
| REMOVE EXISTING TRAFFIC SIGNAL EQUIPMENT | EACH | 1 |
| SIGNAL HEAD, LED, 2-FACE, 1-3 SECTION, 1-5 SECTION, BM, RETROFIT | EACH | 2 |
| SIGNAL HEAD, LED, 1-FACE, 3-SECTION, BM, RETROFIT | EACH | 1 |
| SIGNAL HEAD, LED, 1-FACE, 3-SECTION, MAM, RETROFIT | EACH | 2 |
| SIGNAL HEAD, LED, 1-FACE, 5-SECTION, MAM, RETROFIT | EACH | 2 |
| SIGNAL HEAD, LED, 2-FACE, 3-SECTION, BM, RETROFIT | EACH | 1 |
| UNINTERRUPTIBLE POWER SUPPLY SPECIAL | EACH | 1 |