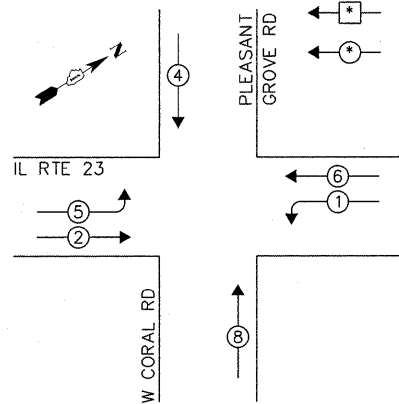


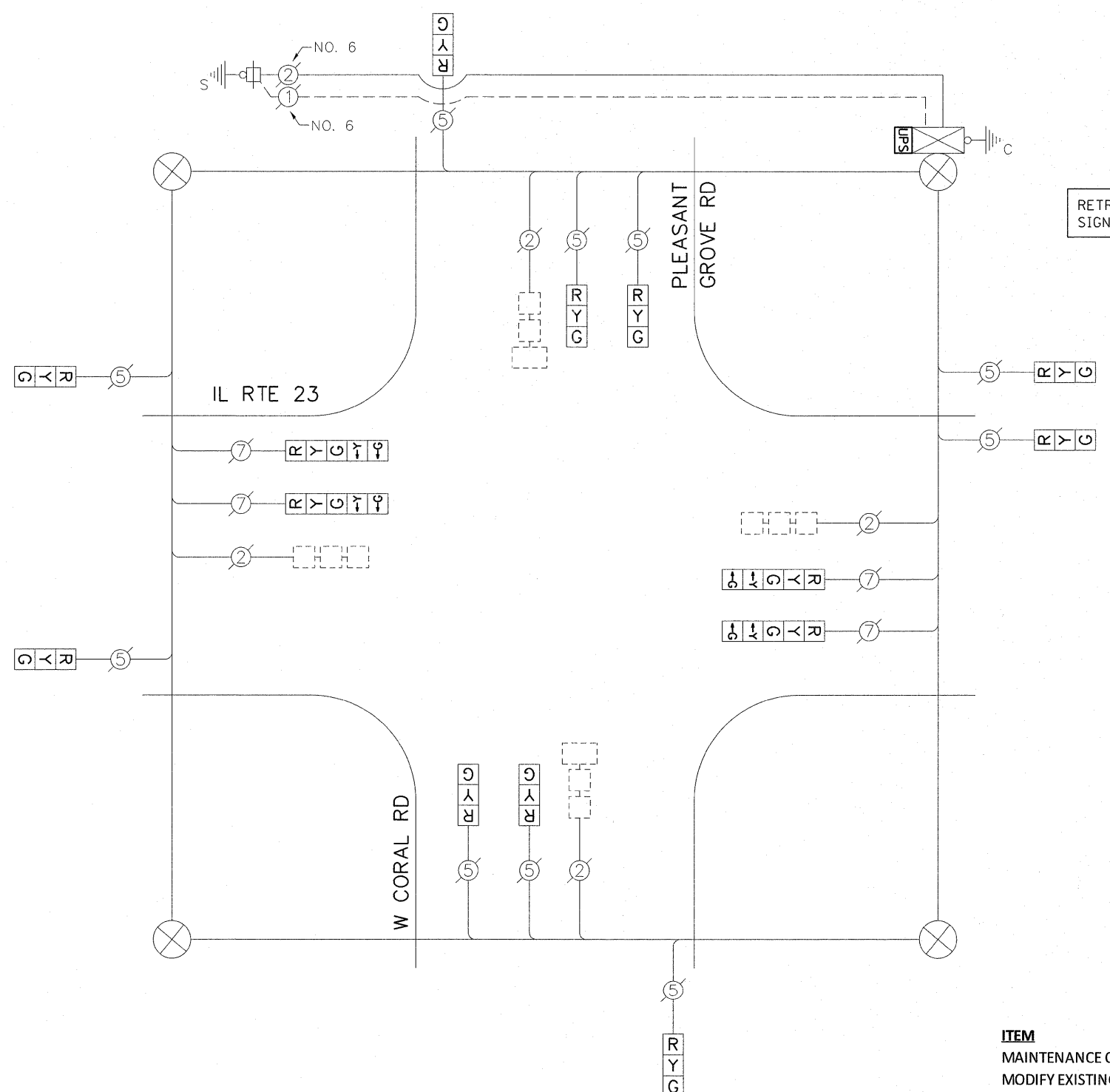
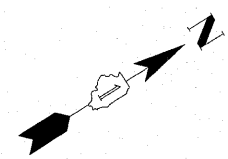
CONTROLLER SEQUENCE

LEGEND:
 [Symbol] SINGLE ENTRY PHASE
 [Symbol] DUAL ENTRY PHASE



PHASE DESIGNATION DIAGRAM

PHASE 2 + 6 SHALL BE PLACED ON RECALL



RETROFIT ALL EXISTING TRAFFIC SIGNAL HEADS TO L.E.D.

CABLE PLAN

I.D.O.T. TRAFFIC SIGNAL INSTALLATION ELECTRICAL SERVICE REQUIREMENTS					TOTAL WATTAGE
TYPE	NO. OF LAMPS	WATTAGE		% OPERATION	
SIGNAL (RED)	14	INCAND.	LED	0.50	119.00
(YELLOW)	14		25	0.25	87.50
(GREEN)	14		15	0.25	52.50
ARROW	8		12	0.10	9.60
PED. SIGNAL	-		25	1.00	-
CONTROLLER	1		100	1.00	100.00
ILLUM. SIGN	-		25	0.05	-
VIDEO SYSTEM	-		-	1.00	-
FLASHER				0.50	
ENERGY COSTS TO:					TOTAL = 368.60

ILLINOIS DEPARTMENT OF TRANSPORTATION
 DIVISION OF HIGHWAY / DISTRICT 1
 201 WEST CENTER COURT / SCHAUMBURG, IL 60196
 ENERGY SUPPLY: CONTACT: MIKE LENOX
 PHONE: (615) 490-2869
 COMPANY: COMMONWEALTH EDISON

SCHEDULE OF QUANTITIES

ITEM	UNIT	QUANTITY
MAINTENANCE OF EXISTING TRAFFIC SIGNAL INSTALLATION	EACH	1
MODIFY EXISTING CONTROLLER CABINET	EACH	1
SIGNAL HEAD, LED, 1-FACE, 3-SECTION, SWM, RETROFIT	EACH	10
SIGNAL HEAD, LED, 1-FACE, 5-SECTION, SWM, RETROFIT	EACH	4
UNINTERRUPTIBLE POWER SUPPLY SPECIAL	EACH	1