

1-20-2012 LETTING ITEM 114

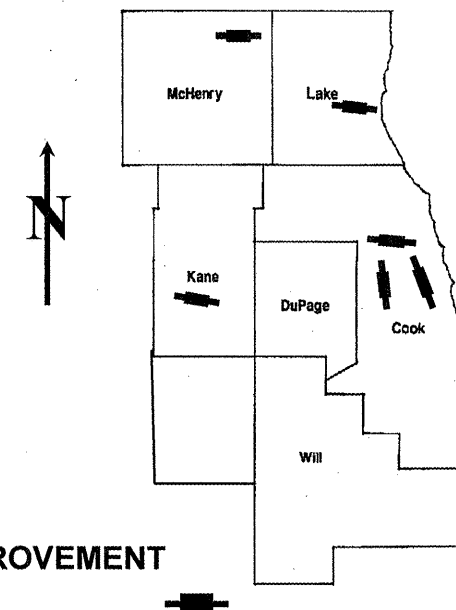
FOR INDEX OF SHEETS SEE SHEET 2

ROUTE	SECTION	COUNTY	TOTAL SHEETS	SHEET NUMBER
VARIOUS	2011-215-I	VARIOUS	22	1

**STATE OF ILLINOIS**  
**DEPARTMENT OF TRANSPORTATION**  
**DIVISION OF HIGHWAYS**  
**DISTRICT ONE**  
**PROPOSED HIGHWAY PLANS**

**CONTRACT NO. 60R57**

**D-91-157-12**



LOCATION OF IMPROVEMENT INDICATED THUS: 

**IMPROVEMENTS ARE LOCATED IN  
 THE CITIES OF  
 ELGIN AND HIGHLAND PARK  
 AND VILLAGES OF  
 HOFFMAN ESTATES,  
 GLENVIEW, ROLLING MEADOWS,  
 AND WHEELING,  
 ELK GROVE, HANOVER,  
 NORTHFIELD, RICHMOND AND ST.  
 CHARLES TOWNSHIPS.**

**VARIOUS ROUTES  
 AT VARIOUS STRUCTURES N. of IL 38  
 SECTION 2011-215-I  
 BRIDGE DECK & CRACK SEALING  
 VARIOUS COUNTIES  
 C-91-157-12**

SEE LOCATION MAPS  
SHEETS 6-9

**STATE OF ILLINOIS**  
**DEPARTMENT OF TRANSPORTATION**  
**DIVISION OF HIGHWAYS**  
 SUBMITTED: NOVEMBER 2, 2011  
*Diana M. O'Keefe*  
 DEPUTY DIRECTOR OF HIGHWAYS, REGION ENGINEER  
December 9 2011  
*Scott E. Stitt, P.E., Ia*  
 acting ENGINEER OF DESIGN AND ENVIRONMENT  
December 9 2011  
*William B. Frey, Ia*  
 interim DIRECTOR, DIVISION OF HIGHWAYS

**PRINTED BY THE AUTHORITY  
 OF THE STATE OF ILLINOIS**

**J.U.L.I.E.: JOINT UTILITY LOCATION  
 INFORMATION FOR EXCAVATION  
 (800) 892-0123 OR 811**

**PROJECT ENGINEER: ROBERT BORO (847) 705-4237**  
**PROJECT MANAGER: ISSAM RAYYAN (847) 705-4178**

**CONTRACT NO. 60R57**

ROUTE	SECTION	COUNTY	TOTAL SHEETS	SHEET NUMBER
VARIOUS	2011-215-I	VARIOUS	22	2

CONTRACT NO. 60R57

**INDEX OF SHEETS**

- 1 TITLE SHEET
- 2 INDEX OF SHEETS
- 3 GENERAL NOTES, STATE STANDARDS
- 4 SUMMARY OF QUANTITIES
- 5 SCHEDULE OF QUANTITIES
- 6-9 LOCATION MAPS
- 10 EXISTING BRIDGE PLANS (LOCATION NO. 1, SN 016-0219)
- 11 EXISTING BRIDGE PLANS (LOCATION NO. 2, SN 016-0243)
- 12 EXISTING BRIDGE PLANS (LOCATION NO. 3, SN 016-0349)
- 13 EXISTING BRIDGE PLANS (LOCATION NO. 4, SN 016-0504)
- 14 EXISTING BRIDGE PLANS (LOCATION NO. 5, SN 016-2087)
- 15 EXISTING BRIDGE PLANS (LOCATION NO.6, SN 016-2514)
- 16 EXISTING BRIDGE PLANS (LOCATION NO. 7, SN 016-2529)
- 17 EXISTING BRIDGE PLANS (LOCATION NO. 8, SN 016-2530)
- 18 EXISTING BRIDGE PLANS (LOCATION NO. 9; SN 045-0045)
- 19 EXISTING BRIDGE PLANS (LOCATION NO. 10; SN 049-0011)
- 20 EXISTING BRIDGE PLANS (LOCATION NO 11, SN 056-0019)
- 21 TRAFFIC CONTROL AND PROTECTION FOR SIDE ROADS, INTERSECTIONS AND DRIVEWAYS (TC-10)
- 22 ARTERIAL ROAD INFORMATION SIGN (TC-22)

**ILLINOIS DEPARTMENT OF  
TRANSPORTATION**

**INDEX OF SHEETS**

ROUTE	SECTION	COUNTY	TOTAL SHEETS	SHEET NUMBER
VARIOUS	2011-215-1	VARIOUS	22	3

CONTRACT NO. 60R57

**GENERAL NOTES**

BEFORE STARTING ANY EXCAVATION, THE CONTRACTOR SHALL CALL "J.U.L.I.E." AT (800) 892-0123 OR 811 FOR FIELD LOCATIONS OF BURIED ELECTRIC, TELEPHONE AND GAS UTILITIES. 48 HOURS NOTIFICATION IS REQUIRED

THE CONTRACTOR SHALL COORDINATE CONSTRUCTION ACTIVITIES WITH UTILITY COMPANIES AND THE CITIES OF ELGIN AND HIGHLAND PARK AND VILLAGES OF GLENVIEW, ROLLING MEADOWS, HOFFMAN ESTATES AND WHEELING.

IT SHALL BE THE CONTRACTOR'S RESPONSIBILITY TO VERIFY ALL DIMENSIONS & CONDITIONS EXISTING IN THE FIELD PRIOR TO CONSTRUCTION & ORDERING OF MATERIALS.

THE CONTRACTOR WILL NOT BE ALLOWED TO SET UP A YARD OR FIELD OFFICE ON STATE PROPERTY WITHOUT WRITTEN PERMISSION FROM THE DEPARTMENT.

THE CONTRACTOR SHALL CONTACT THE DISTRICT ONE TRAFFIC CONTROL SUPERVISOR AT (847) 705-4470 A MINIMUM OF 72 HOURS IN ADVANCE OF BEGINNING WORK.

DO NOT SCALE PLANS FOR CONSTRUCTION DIMENSIONS.

EXISTING PAVEMENT MARKINGS SHALL BE TEMPORARILY COVERED PRIOR TO APPLICATION OF THE DECK SURFACE TREATMENT, TO PREVENT THE MATERIAL FROM BEING APPLIED TO THE MARKINGS. THE TEMPORARY COVERING SHALL BE REMOVED AFTER APPLICATION OF THE DECK SURFACE TREATMENT AND PRIOR TO OPENING TO TRAFFIC. COST IS INCLUDED WITH THE DECK SURFACE TREATMENT SPECIFIED.

THESE PLANS HAVE BEEN PREPARED FROM NOTES RECEIVED FROM THE BUREAU OF MAINTENANCE.

**STATE STANDARDS**

701301-04 LANE CLOSURE, 2L, 2W, SHORT TIME OPERATIONS

701501-06 URBAN LANE CLOSURE, 2L, 2W, UNDIVIDED

701601-07 URBAN LANE CLOSURE, MULTILANE, 1W OR 2W WITH NONTRAVERSABLE MEDIAN

701606-08 URBAN LANE CLOSURE, MULTILANE, 2W WITH MOUNTABLE MEDIAN

701801-05 LANE CLOSURE, MULTILANE 1W OR 2W CROSSWALK OR SIDEWALK CLOSURE

701901-02 TRAFFIC CONTROL DEVICES

ILLINOIS DEPARTMENT OF  
TRANSPORTATION

GENERAL NOTES  
STATE STANDARDS

ROUTE	SECTION	COUNTY	TOTAL SHEETS	SHEET NUMBER
VARIOUS	2011-215 - I	VARIOUS	22	4

CONTRACT NO. 60R57

SUMMARY OF QUANTITIES						
CODE NO	DESCRIPTION	UNITS	TOTAL	CONSTRUCTION TYPE CODE: 0014		
67000400	ENGINEER'S FIELD OFFICE, TYPE A	CAL MO	3	3		
67100100	MOBILIZATION	L SUM	1	1		
70102620	TRAFFIC CONTROL AND PROTECTION, STANDARD 701501	L SUM	1	1		
70102625	TRAFFIC CONTROL AND PROTECTION, STANDARD 701606	L SUM	1	1		
70102630	TRAFFIC CONTROL AND PROTECTION, STANDARD 701601	L SUM	1	1		
70102640	TRAFFIC CONTROL AND PROTECTION, STANDARD 701801	L SUM	1	1		
Z0030850	TEMPORARY INFORMATION SIGNING	SQ FT	154.2	154.2		
Z0048665	RAILROAD PROTECTIVE LIABILITY INSURANCE	L SUM	1	1		
<u>58700300</u>	CONCRETE SEALER	SQ FT	63709	63709		

ILLINOIS DEPARTMENT OF  
TRANSPORTATION  
  
SUMMARY OF QUANTITIES

ROUTE	SECTION	COUNTY	TOTAL SHEETS	SHEET NUMBER
VARIOUS	2011-215-I	VARIOUS	22	5

CONTRACT: 60R57

Location	COOK COUNTY								KANE COUNTY	LAKE COUNTY	MCHENRY COUNTY
	SN 016-0219	SN 016-0243	SN 016-0349	SN 016-0504	SN 016-2087	SN 016-2514	SN 016-2529	SN 016-2530	SN 045-0045	SN 049-0011	SN 056-0019
	1	2	3	4	5	6	7	8	9	10	11
BRIDGE DECK CONCRETE CRACK SEALER (SQ. FT)	5491	14502	6666	3381	7601	5339	3126	3723	2990	5130	5760
TRAFFIC CONTROL AND PROTECTION, STANDARD 701501						0.25			0.25	0.25	0.25
TRAFFIC CONTROL AND PROTECTION, STANDARD 701601		0.17	0.17	0.15	0.17		0.17	0.17			
TRAFFIC CONTROL AND PROTECTION, STANDARD 701606	1.0										
TRAFFIC CONTROL AND PROTECTION, STANDARD 701801		0.25					0.25	0.25		0.25	
RAILROAD PROTECTIVE LIABILITY INSURANCE (L SUM)	0.5	0.5									

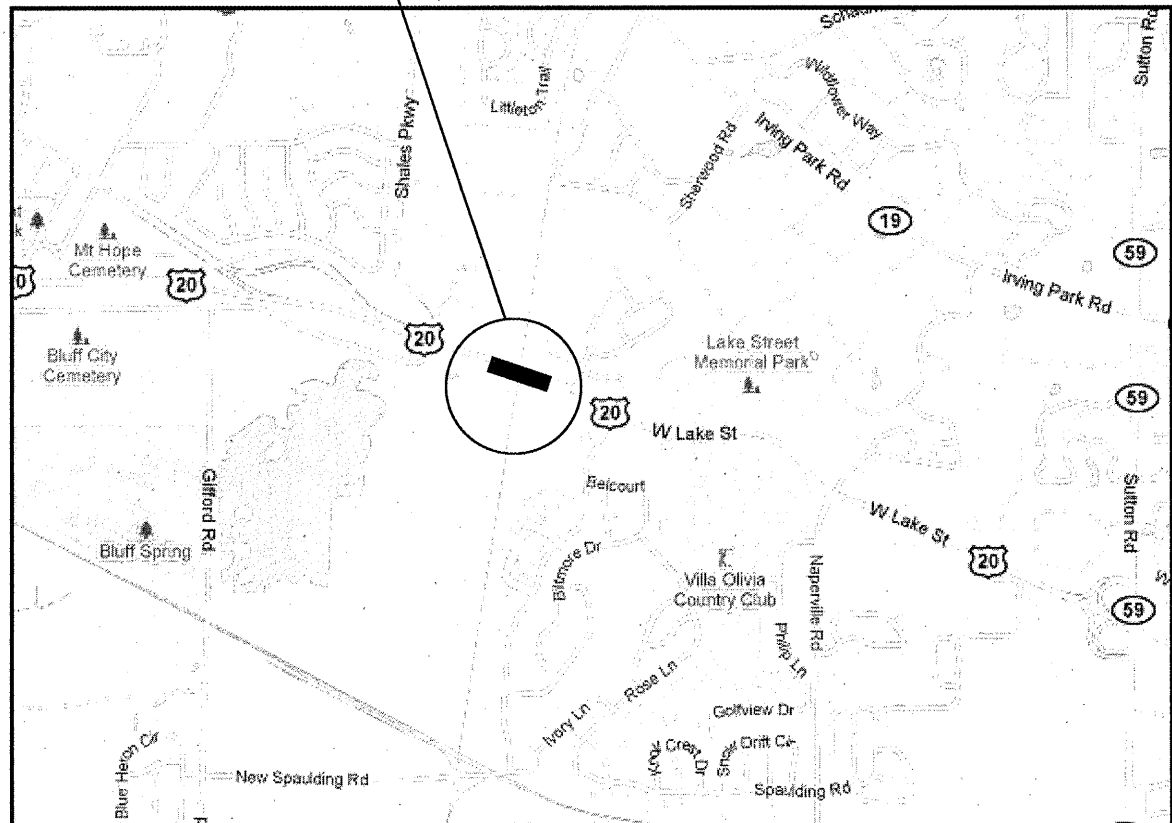
ILLINOIS DEPARTMENT OF TRANSPORTATION  
 SCHEDULE OF QUANTITIES

ROUTE	SECTION	COUNTY	TOTAL SHEETS	SHEET NUMBER
VARIOUS	2011-049-I	VARIOUS		6

CONTRACT NO. 60R57

LOCATION 1: SN 016-0219  
US 20 (W LAKE ST)  
OVER RR-EJ&E RAILROAD  
CITY OF ELGIN

R 9E

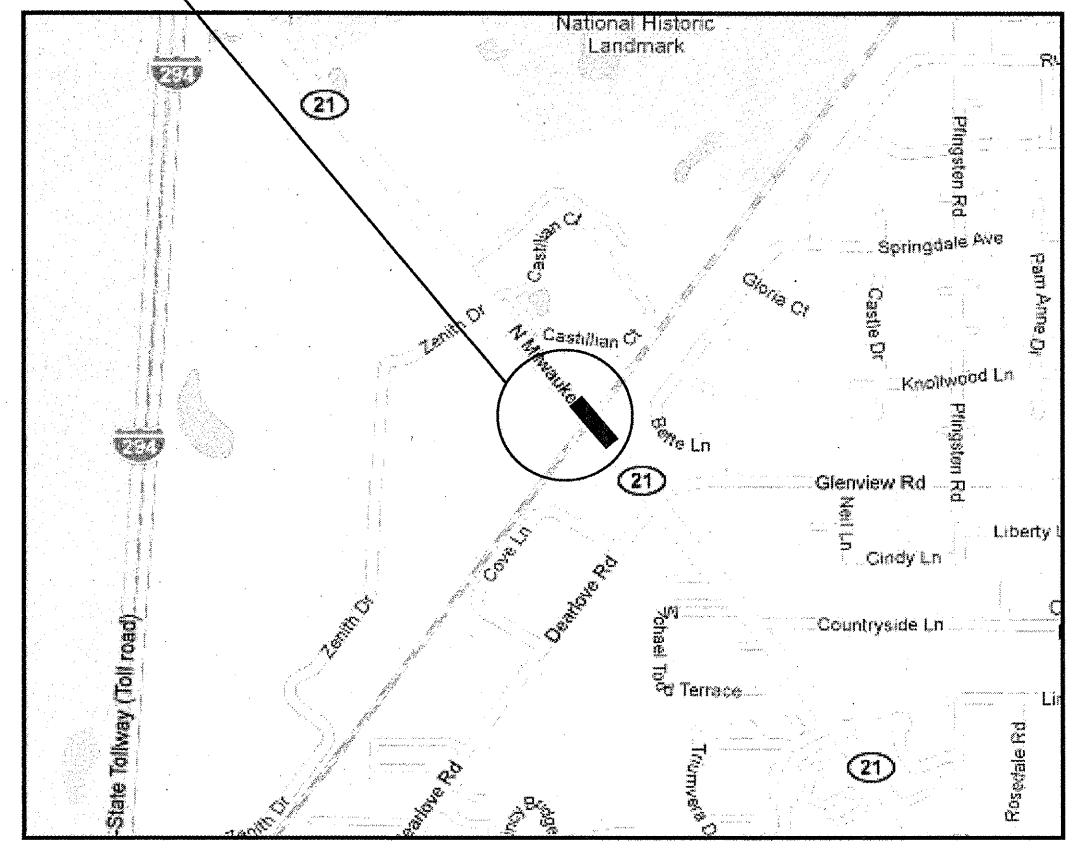


T 41 N

HANOVER TOWNSHIP  
COOK COUNTY

LOCATION 2: SN 016-0243  
IL 21 (MILWAUKEE AVE)  
OVER UNION PACIFIC  
RAILROAD  
VILLAGE OF GLENVIEW

R 12E



T 42 N

NORTHFIELD TOWNSHIP  
COOK COUNTY



TRAFFIC DATA

US 20 (W LAKE ST)

2009 ADT = 39700  
POSTED SPEED LIMIT = 45 MPH

IL 21 (MILWAUKEE AVE)

2009 ADT = 28600  
POSTED SPEED LIMIT = 45 MPH

ILLINOIS DEPARTMENT OF  
TRANSPORTATION  
  
LOCATION MAP  
LOCATION 1 & 2

ROUTE	SECTION	COUNTY	TOTAL SHEETS	SHEET NUMBER
VARIOUS	2011-049-I	VARIOUS	43	7

CONTRACT NO. 60R57

LOCATION 3: SN 016-0349  
IL 58 (GOLF RD)  
OVER SALT CREEK  
ROLLING MEADOWS VILLAGE

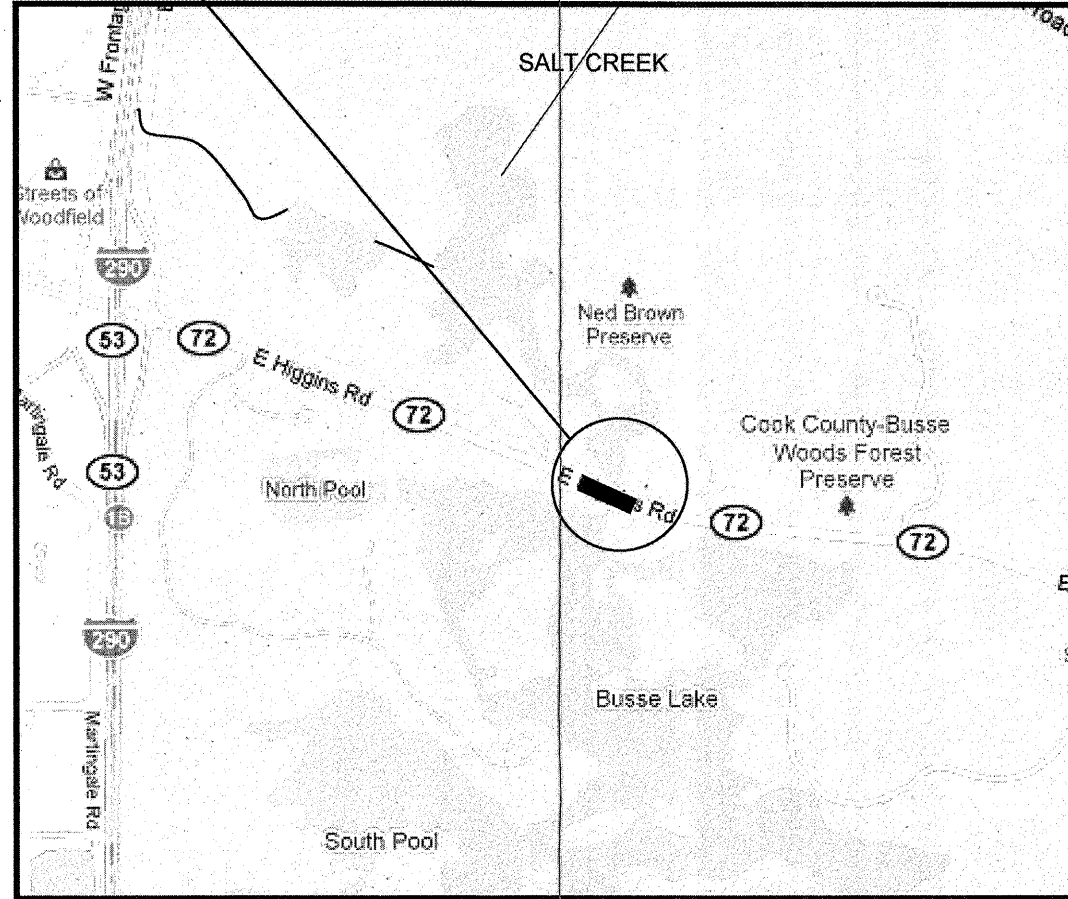
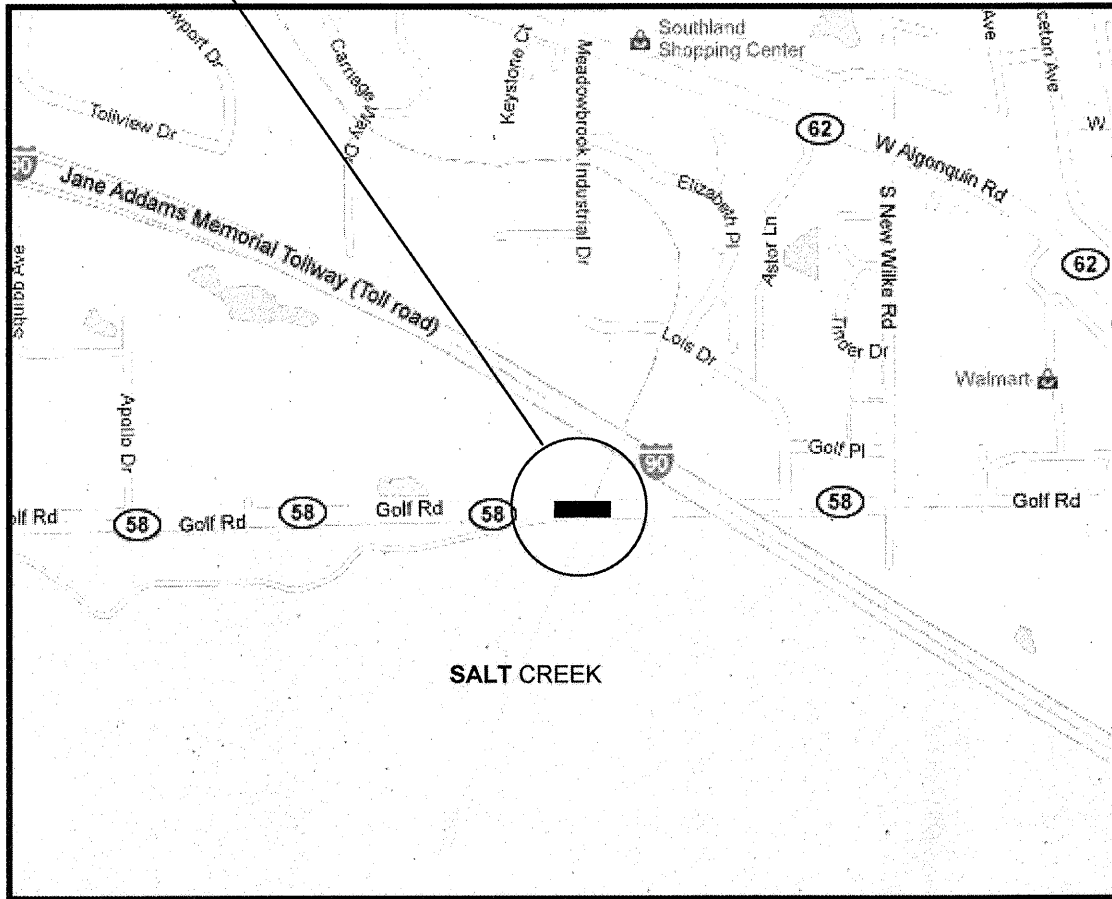
LOCATION 4: SN 016-0504  
IL 72 (HIGGINS RD)  
OVER SALT CREEK  
ELK GROVE TOWNSHIP

R 10 E

R 11 E

T 41 N

T 41 N



ELK GROVE TOWNSHIP  
COOK COUNTY

ELK GROVE TOWNSHIP  
COOK COUNTY

TRAFFIC DATA

IL 58 (GOLF RD)

2010 ADT = 47400  
POSTED SPEED LIMIT = 45 MPH

IL 72 (HIGGINS RD)

2009 ADT = 34100  
POSTED SPEED LIMIT = 45 MPH

ILLINOIS DEPARTMENT OF  
TRANSPORTATION  
  
LOCATION MAP  
LOCATION 3 & 4

ROUTE	SECTION	COUNTY	TOTAL SHEETS	SHEET NUMBER
VARIOUS	2011-049-I	VARIOUS		8

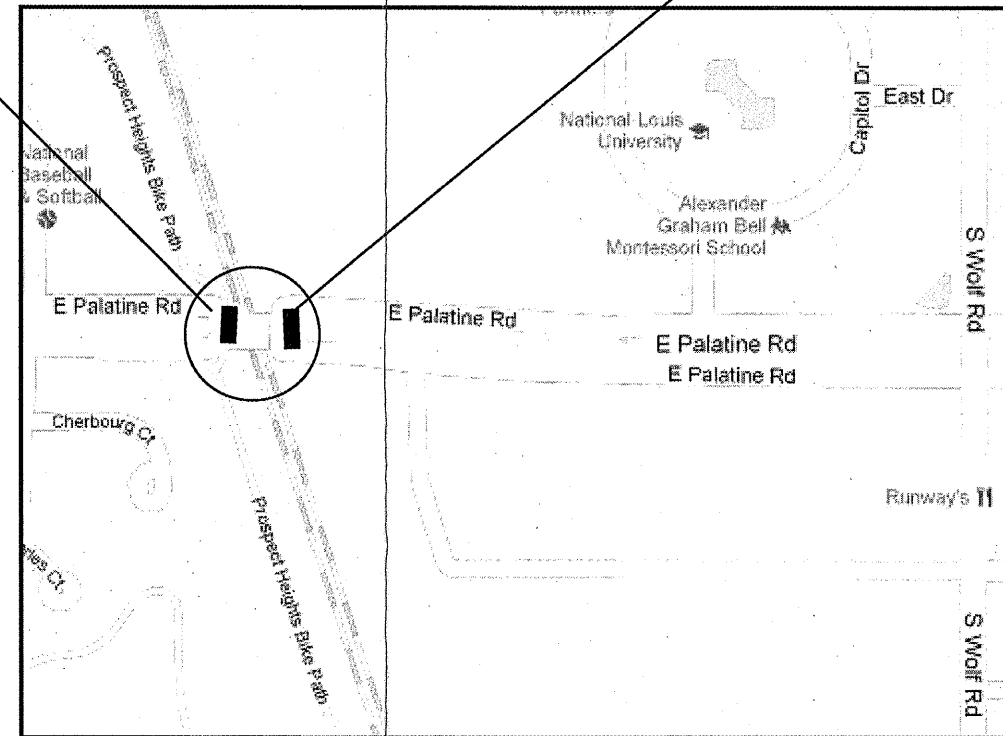
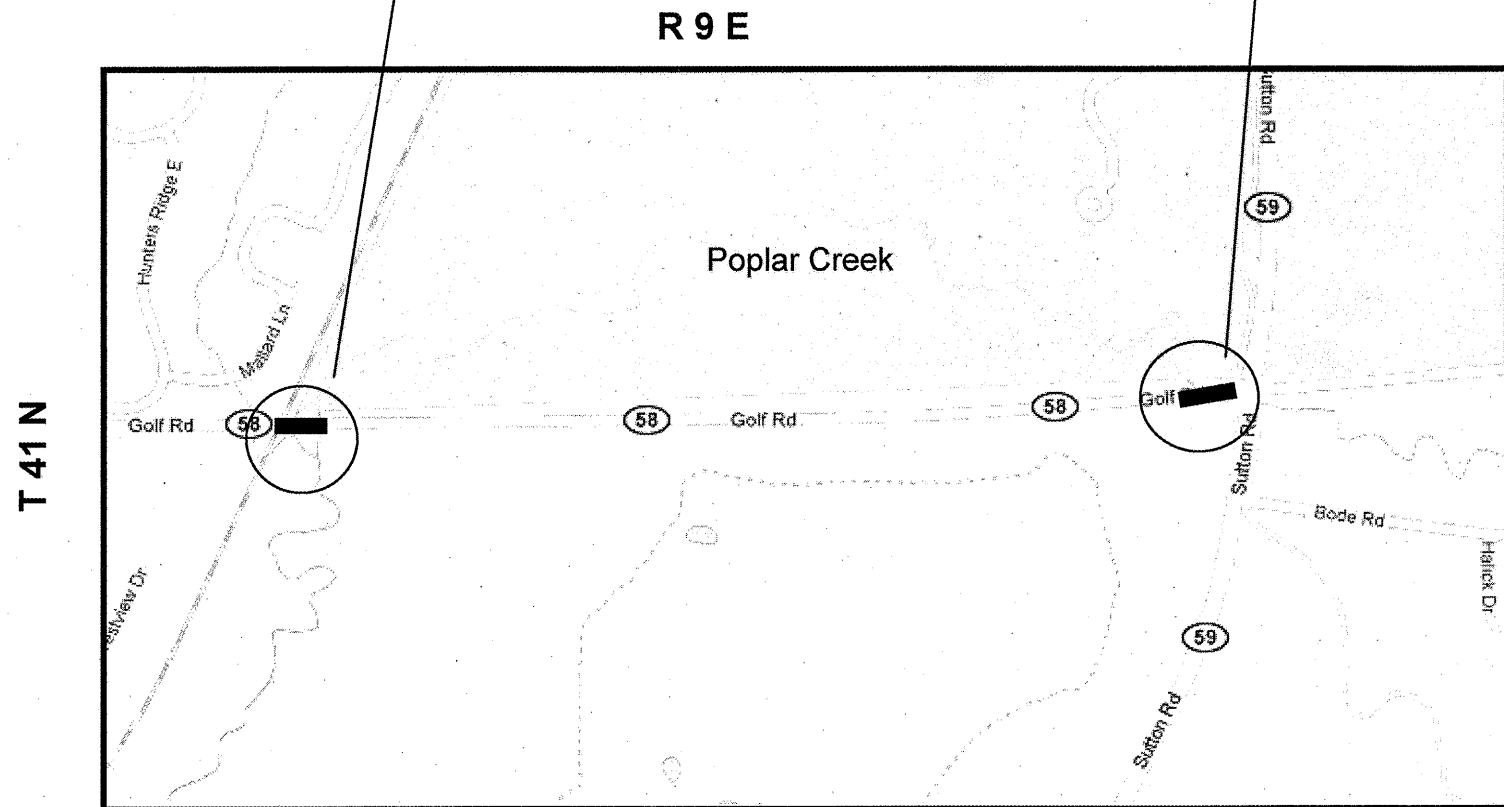
CONTRACT NO 60R57

LOCATION 6: SN 016-2514  
IL 58 (GOLF RD)  
OVER POPLAR CREEK  
HANOVER TOWNSHIP

LOCATION 5: SN 016-2087  
IL 58 (GOLF RD)  
OVER POPLAR CREEK  
VILLAGE OF HOFFMAN ESTATES

LOCATION 8: SN 016-2530  
W FRONTAGE RD (CN RR)  
OVER PALATINE RD  
VILLAGE OF WHEELING

LOCATION 7: SN 016-2529  
E FRONTAGE RD (CN RR)  
OVER PALATINE RD  
VILLAGE OF WHEELING



HANOVER TOWNSHIP  
COOK COUNTY

WHEELING TOWNSHIP  
COOK COUNTY

TRAFFIC DATA

IL 58 (GOLF RD)

2009 ADT = 13200  
POSTED SPEED LIMIT = 45 MPH

FRONTAGE RD

2010 ADT = 35200  
POSTED SPEED LIMIT = 30 MPH

ILLINOIS DEPARTMENT OF  
TRANSPORTATION

LOCATION MAP  
LOCATION 5: 6, 7 & 8

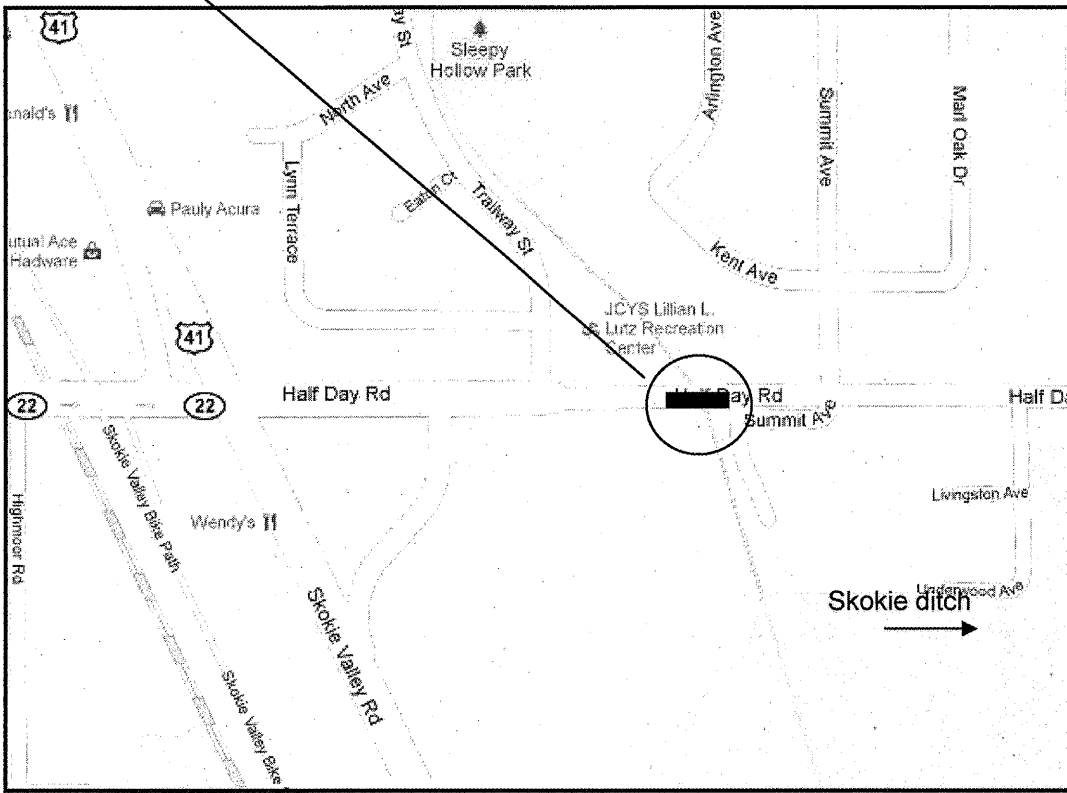


ROUTE	SECTION	COUNTY	TOTAL SHEETS	SHEET NUMBER
VARIOUS	2011-215-I	VARIOUS	22	9

CONTRACT NO. 60R57

LOCATION 10: SN 049-0011  
 HALF DAY RD OVER  
 E BR SKOKIE DITCH  
 CITY OF HIGHLAND PARK

R 12 E

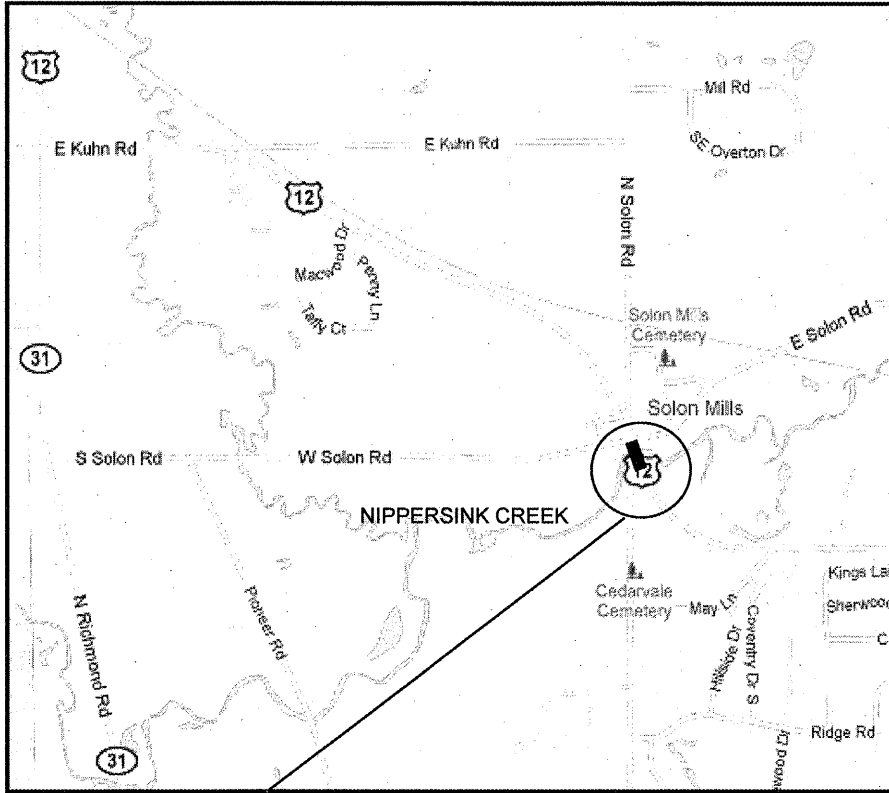


MORaine TOWNSHIP  
 LAKE COUNTY

R 8 E



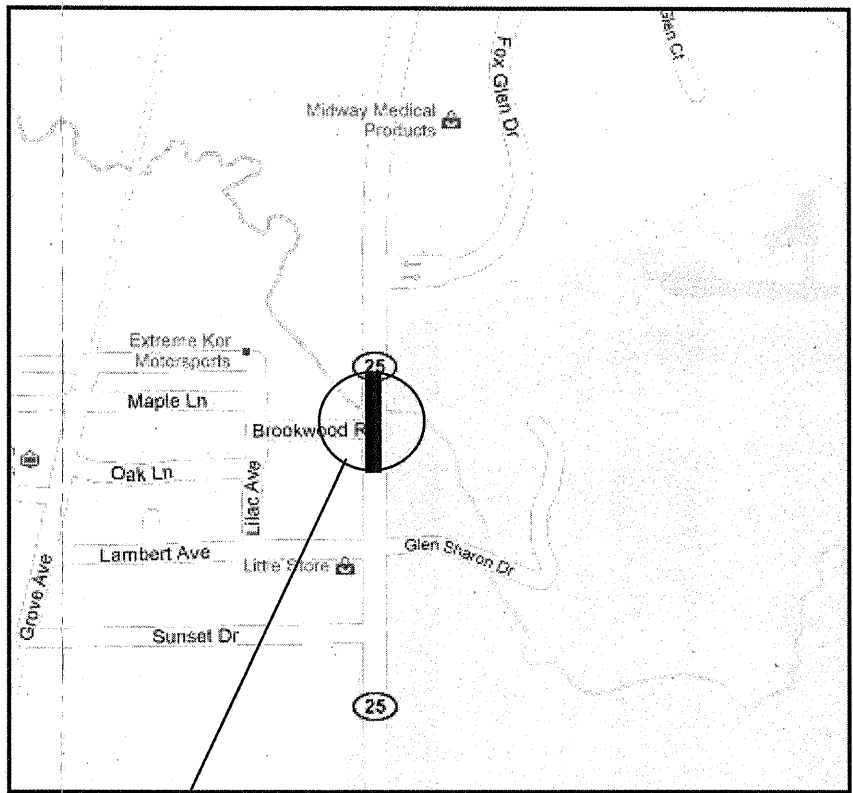
T 46 N



RICHMOND TOWNSHIP  
 MCHENRY COUNTY

R 11 E

T 39 N



ST CHARLES TOWNSHIP  
 KANE COUNTY

LOCATION 11: 056-0019  
 US 12 OVER  
 NIPPERSINK CREEK  
 RICHMOND TOWNSHIP

LOCATION 09: 045-0045  
 IL 25  
 OVER NORTON CREEK  
 ST CHARLES TOWNSHIP

**TRAFFIC DATA**

**HALF DAY RD**

2007 ADT = 10600  
 POSTED SPEED LIMIT = 35 MPH

**US 12**

2009 ADT = 10200  
 POSTED SPEED LIMIT = 50 MPH

**IL 25**

2009 ADT = 10900  
 POSTED SPEED LIMIT = 45 MPH

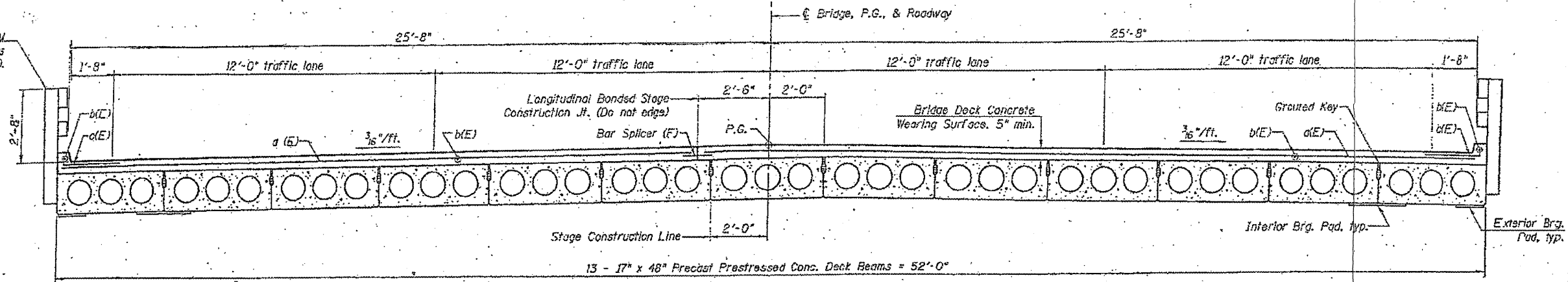
ILLINOIS DEPARTMENT OF  
 TRANSPORTATION  
  
 LOCATION MAP  
 LOCATION 9; 10 & 11

ROUTE	SECTION	COUNTY	TOTAL SHEETS	SHEET NUMBER
VARIOUS	2011-215-1	VARIOUS	22	10

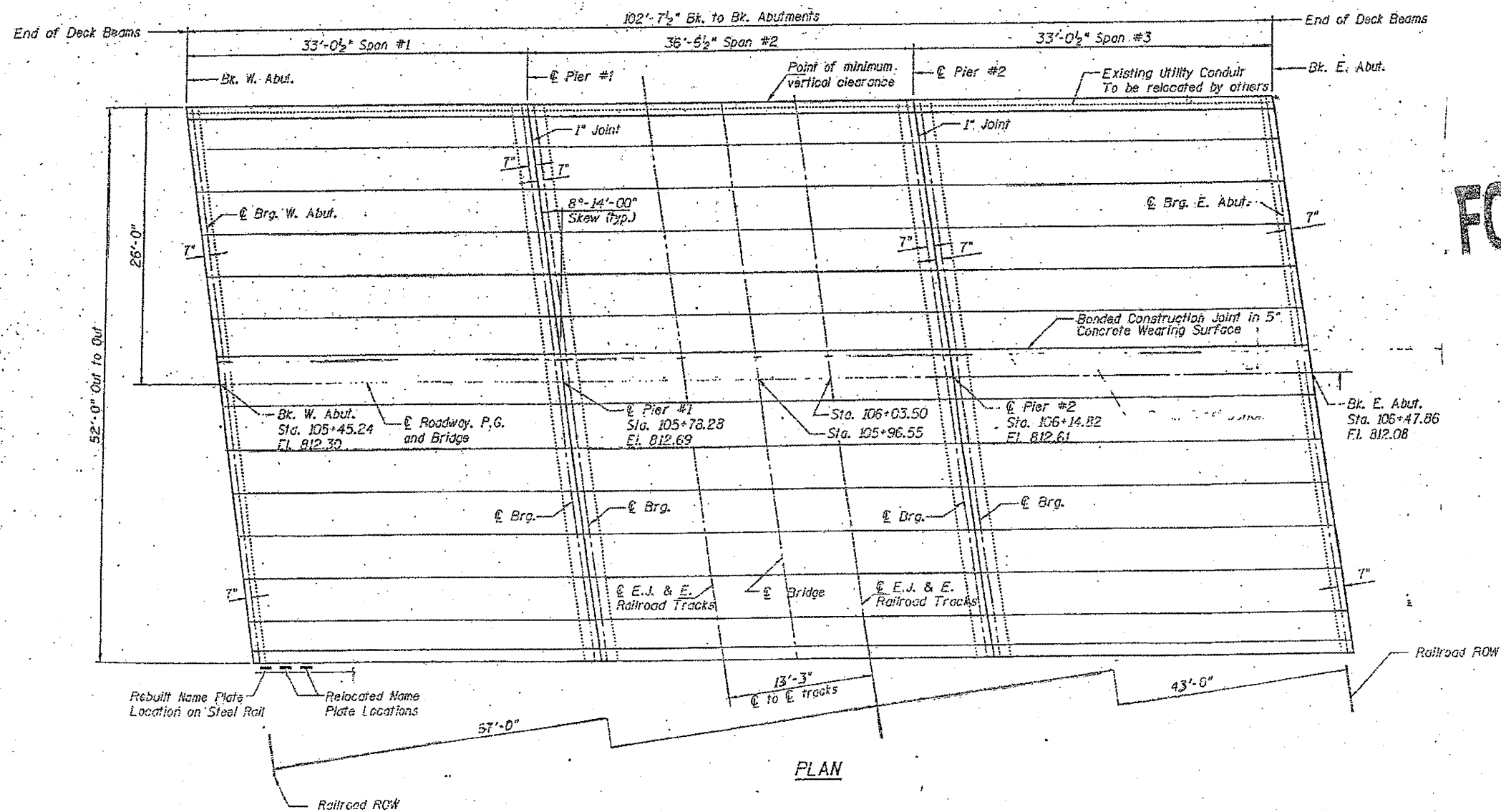
CONTRACT NO. 60R57

60R

Rolling Type SM  
Steel Typ. Both Sides  
See Sht. B of 10.



**CROSS SECTION**  
(Looking East)



**PLAN**

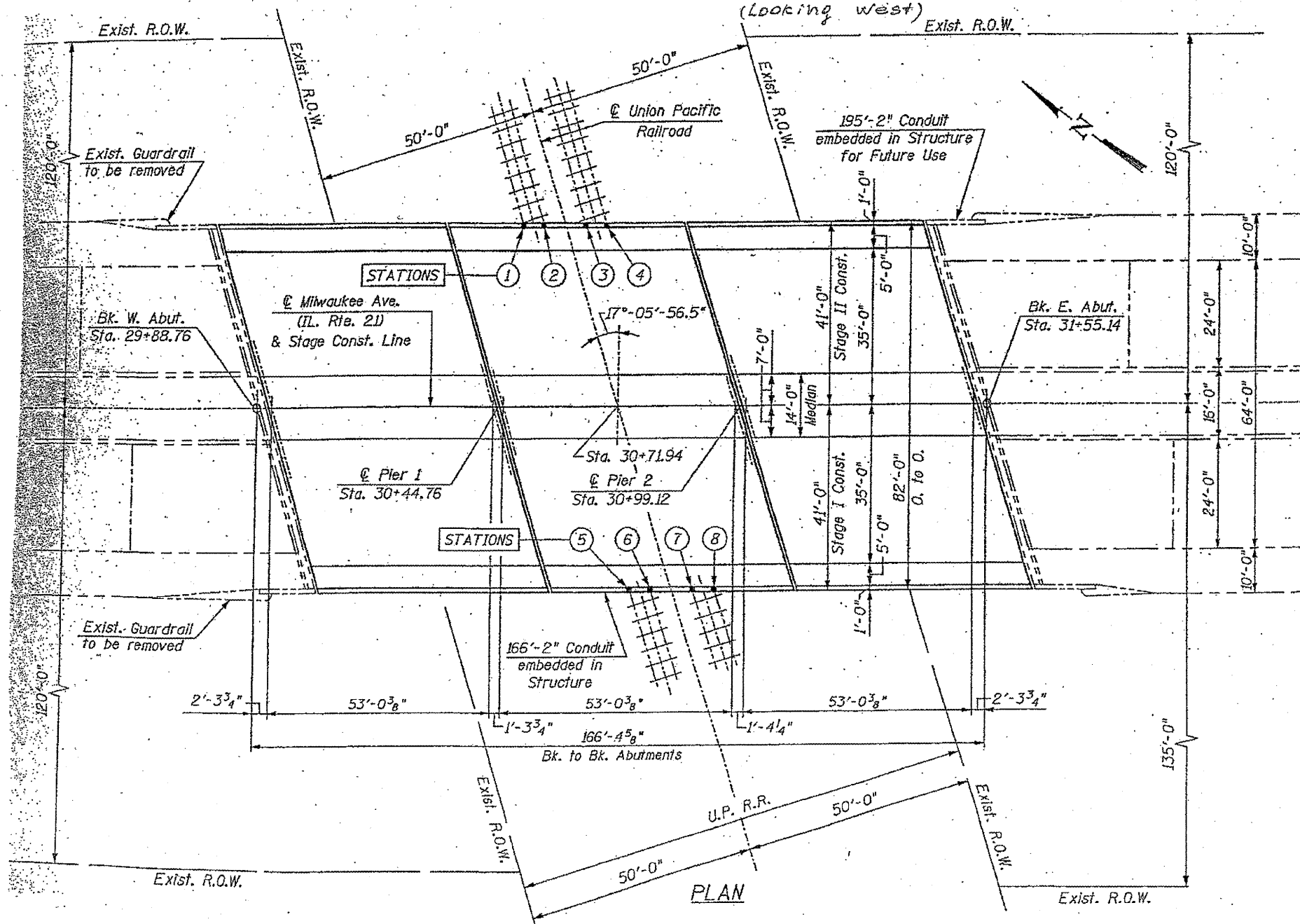
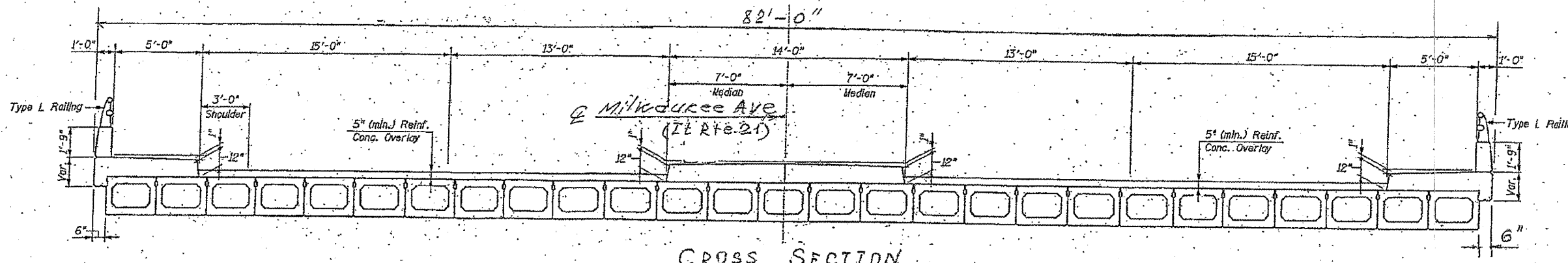
**FOR INFORMATION ONLY**

ILLINOIS DEPARTMENT OF  
TRANSPORTATION

EXISTING PLANS  
LOCATION 1 (SN 016-0219)

ROUTE	SECTION	COUNTY	TOTAL SHEETS	SHEET NUMBER
VARIOUS	2011-215-I	VARIOUS	22	11

CONTRACT NO. 60R57

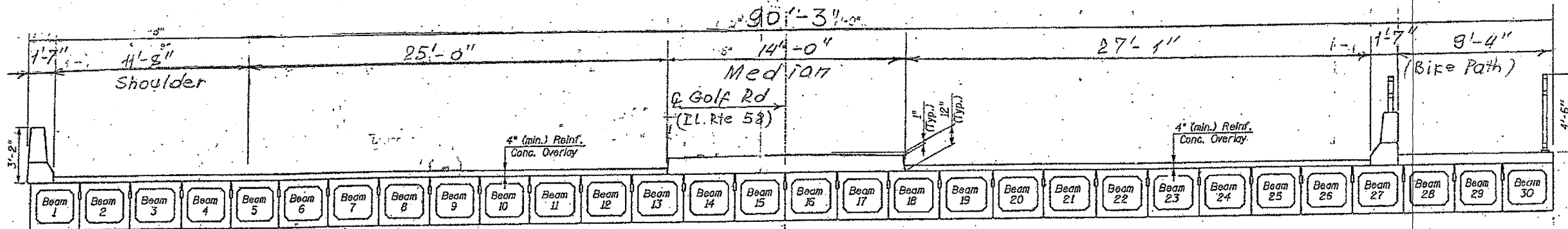


**FOR INFORMATION ONLY**

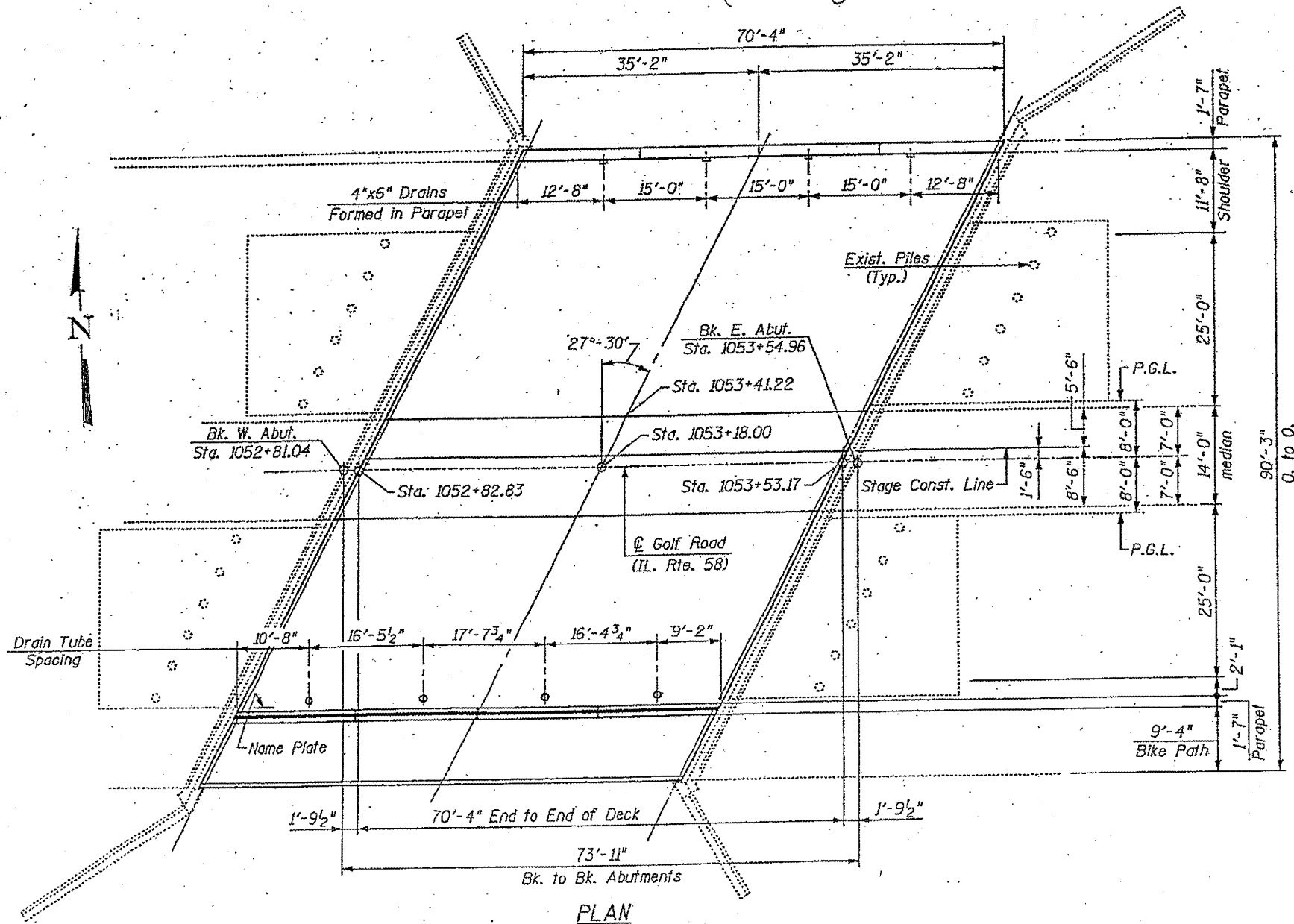
ILLINOIS DEPARTMENT OF TRANSPORTATION  
 EXISTING PLANS  
 LOCATION 2 (SN 016-0243)

ROUTE VARIOUS	SECTION 2011-215-I	COUNTY VARIOUS	TOTAL SHEETS 22	SHEET NUMBER 12
------------------	-----------------------	-------------------	-----------------------	-----------------------

CONTRACT NO. 60R57



CROSS SECTION  
(Looking East)

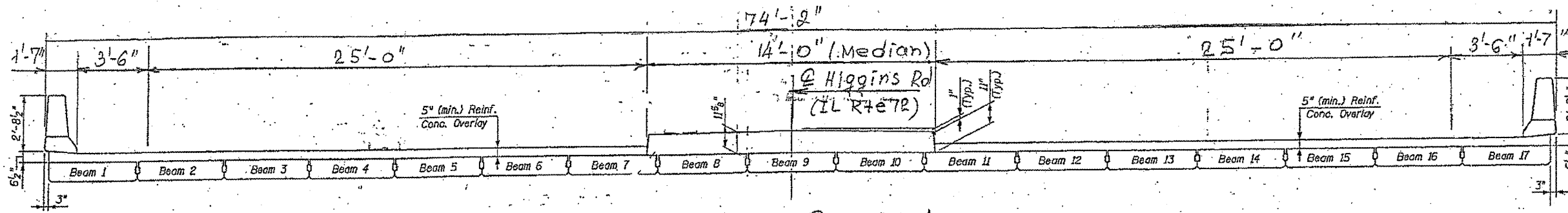


FOR INFORMATION ONLY

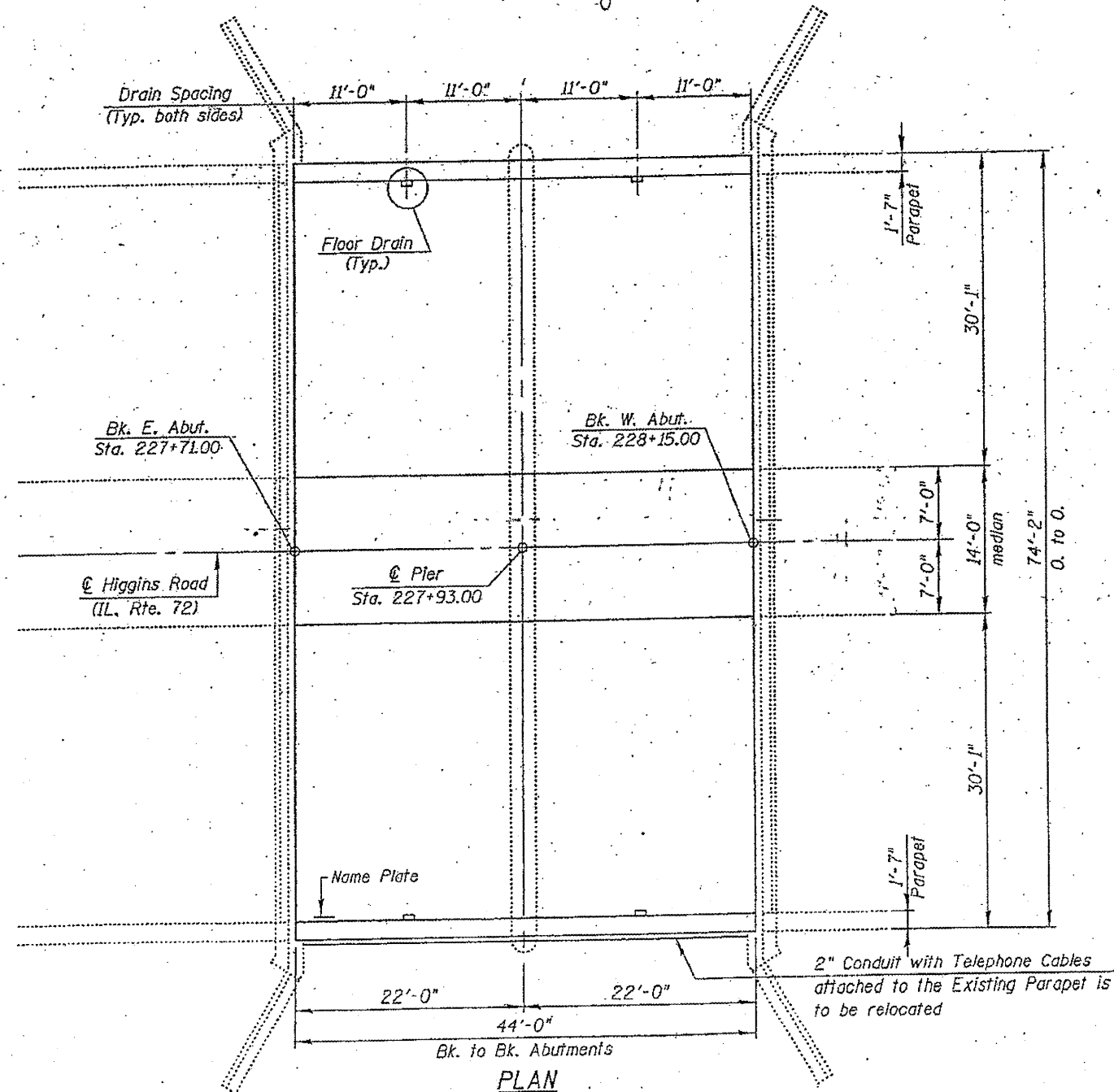
ILLINOIS DEPARTMENT OF  
TRANSPORTATION  
  
EXISTING PLANS  
LOCATION 3 (SN 016-0349)

ROUTE	SECTION	COUNTY	TOTAL SHEETS	SHEET NUMBER
VARIOUS	2011-215-1	VARIOUS	22	13

CONTRACT NO. 60R57



GROSS SECTION  
(Looking West)

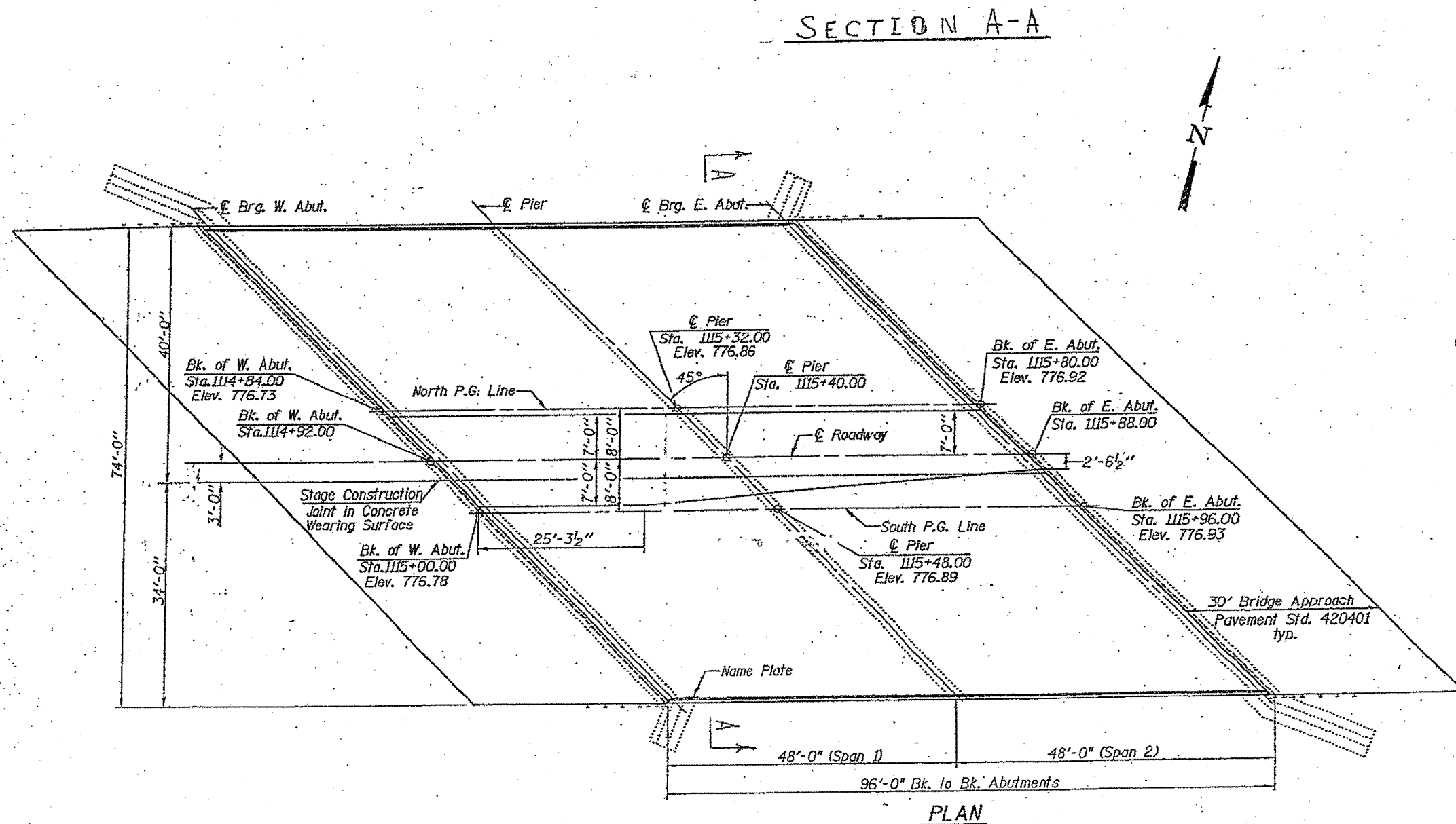
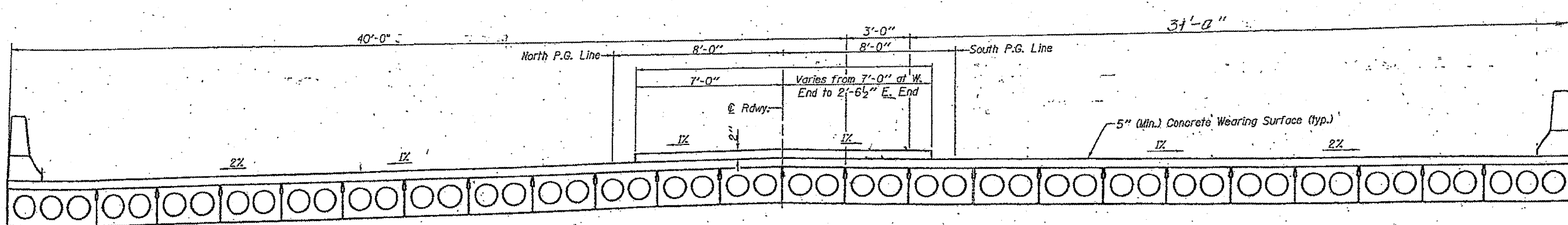


FOR INFORMATION ONLY

ILLINOIS DEPARTMENT OF  
TRANSPORTATION  
  
EXISTING PLANS  
LOCATION 4 (SN 016-0504)

ROUTE	SECTION	COUNTY	TOTAL SHEETS	SHEET NUMBER
VARIOUS	2011-215-I	VARIOUS	22	14

CONTRACT NO. 60R57



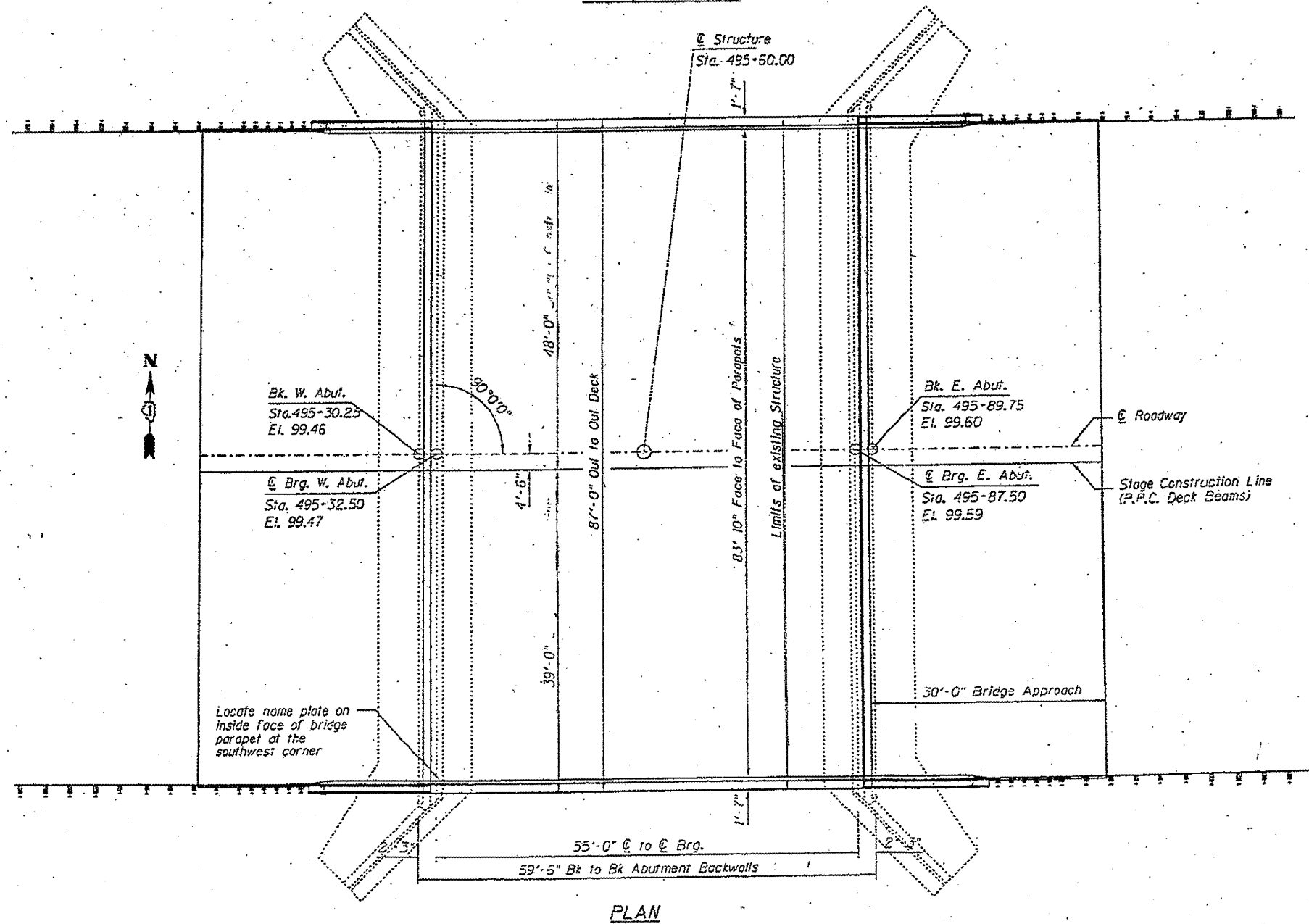
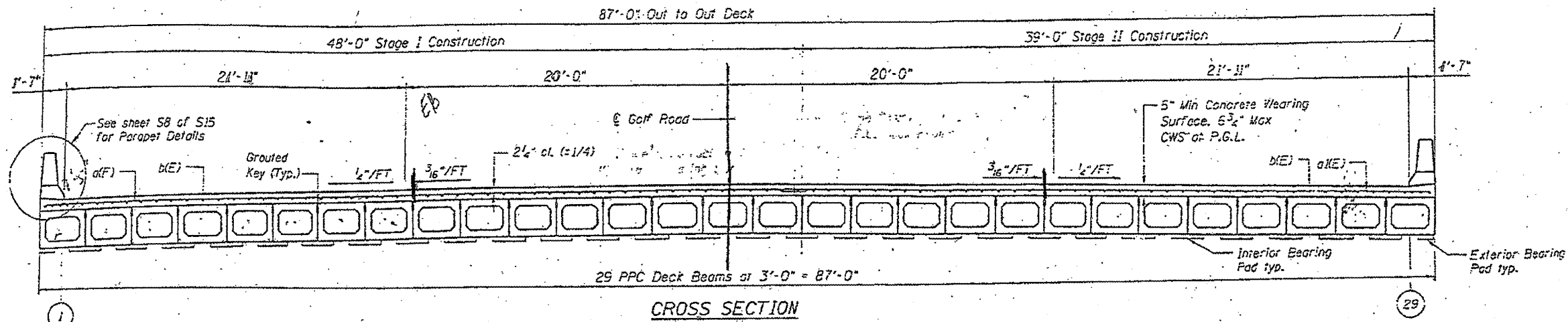
FOR INFORMATION ONLY

ILLINOIS DEPARTMENT OF  
TRANSPORTATION

EXISTING PLANS  
LOCATION 5 (SN 016-2087)

ROUTE	SECTION	COUNTY	TOTAL SHEETS	SHEET NUMBER
VARIOUS	2011-215-I	VARIOUS	22	15

CONTRACT NO. 60R57



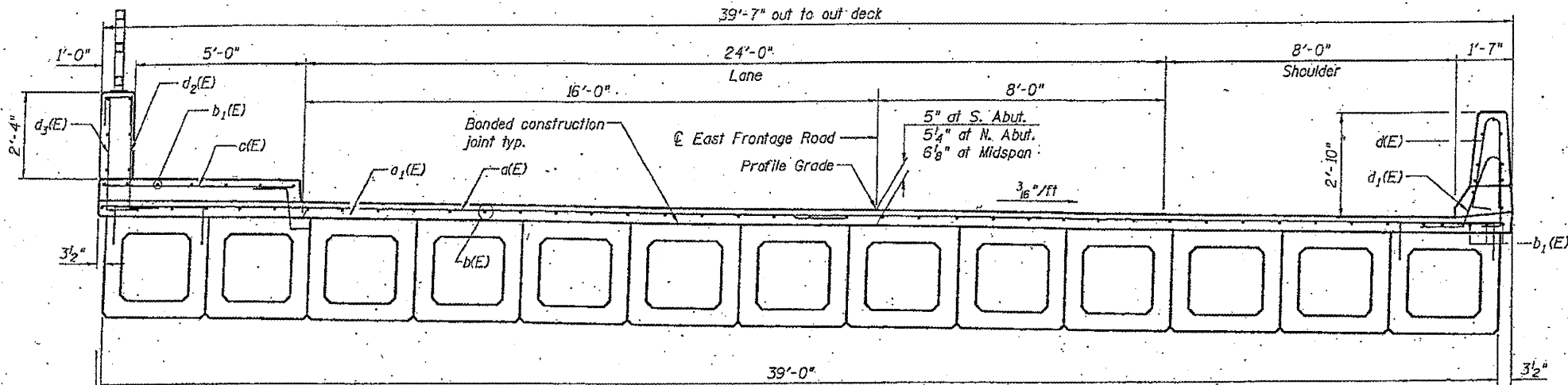
**FOR INFORMATION ONLY**

ILLINOIS DEPARTMENT OF  
TRANSPORTATION

EXISTING PLANS  
LOCATION 6 (SN 016-2514)

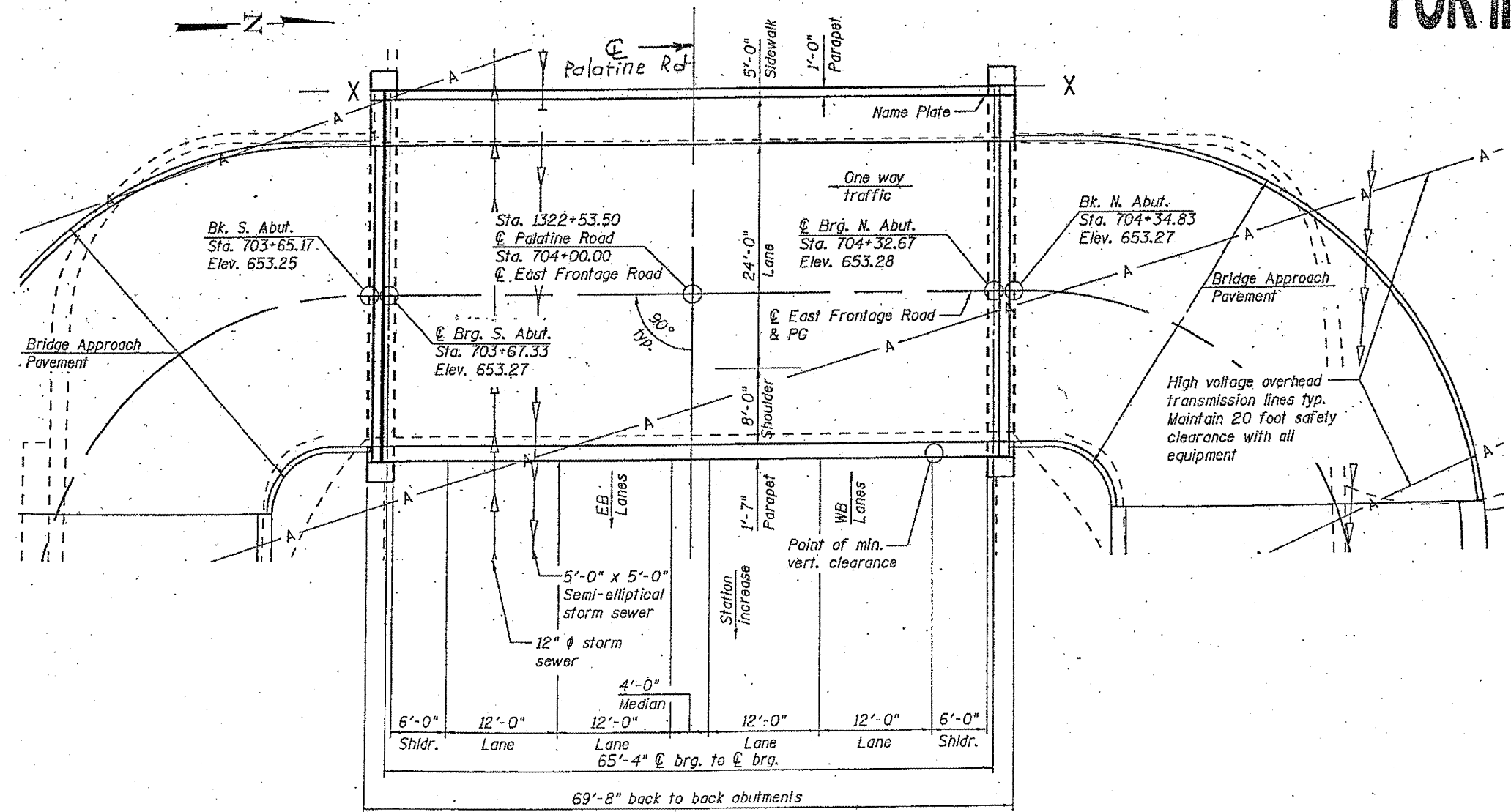
ROUTE	SECTION	COUNTY	TOTAL SHEETS	SHEET NUMBER
VARIOUS	2011-215-I	VARIOUS	22	16

CONTRACT NO. 60R57



DECK CROSS SECTION  
(Looking Upstation)

FOR INFORMATION ONLY



PLAN

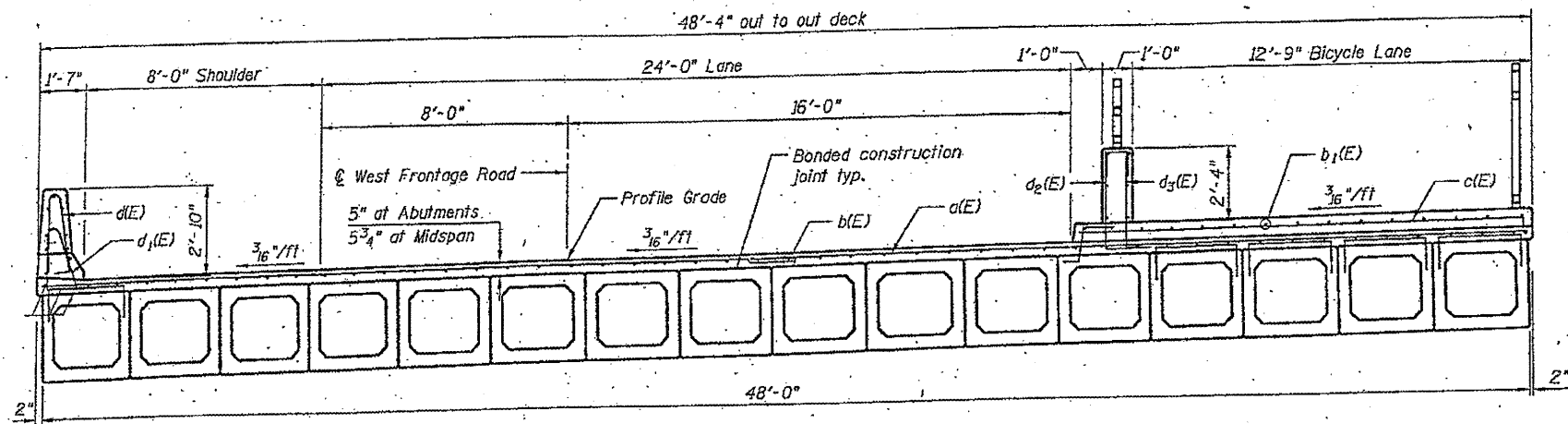
ILLINOIS DEPARTMENT OF  
TRANSPORTATION

EXISTING PLANS  
LOCATION 7 (SN 016-2529)



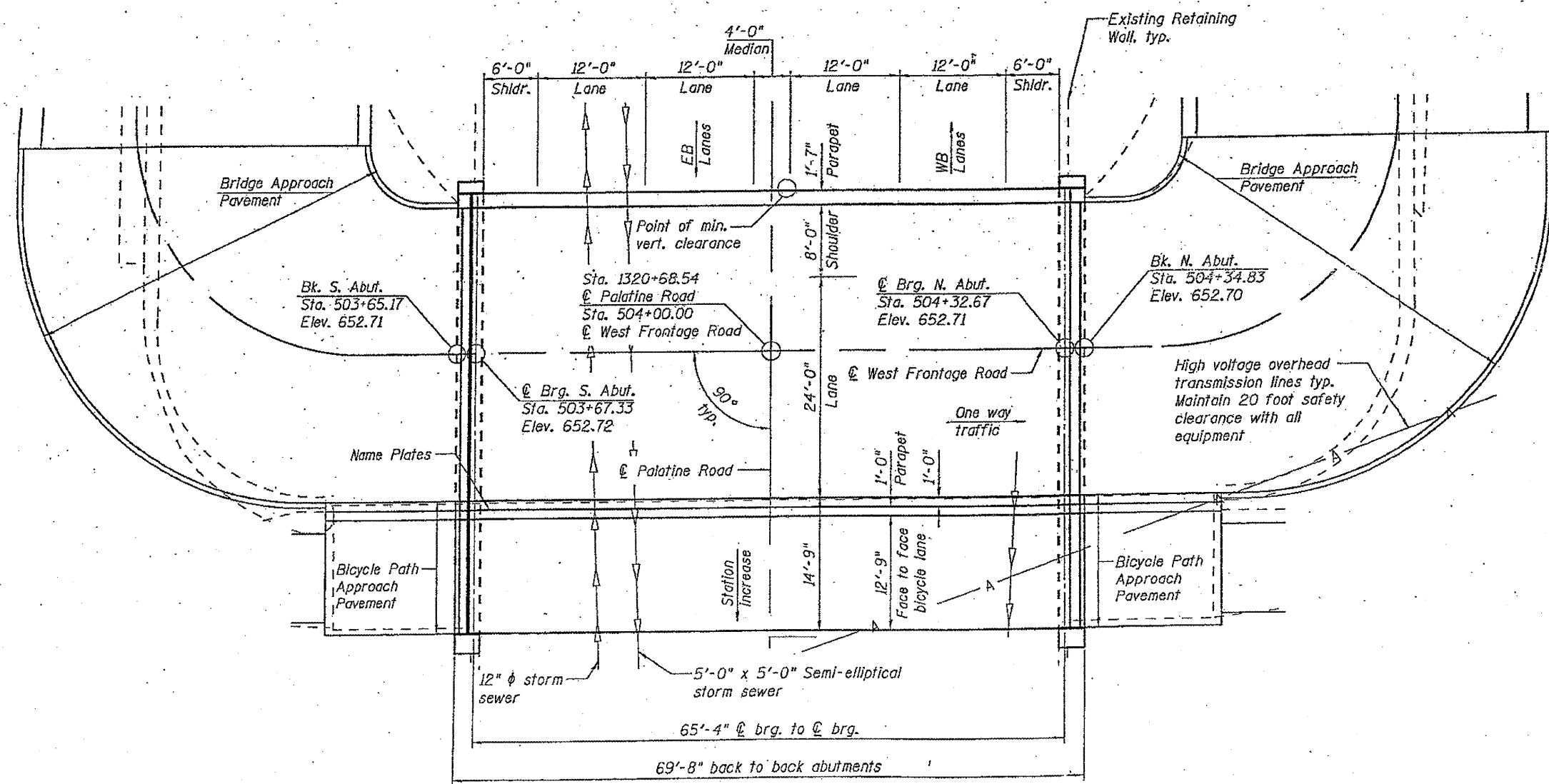
<b>ROUTE</b>	<b>SECTION</b>	<b>COUNTY</b>	<b>TOTAL SHEETS</b>	<b>SHEET NUMBER</b>
VARIOUS	2011-215-I	VARIOUS	22	17

CONTRACT NO. 60R57



**DECK CROSS SECTION**  
(Looking Upstream)

**FOR INFORMATION ONLY**



**PLAN**

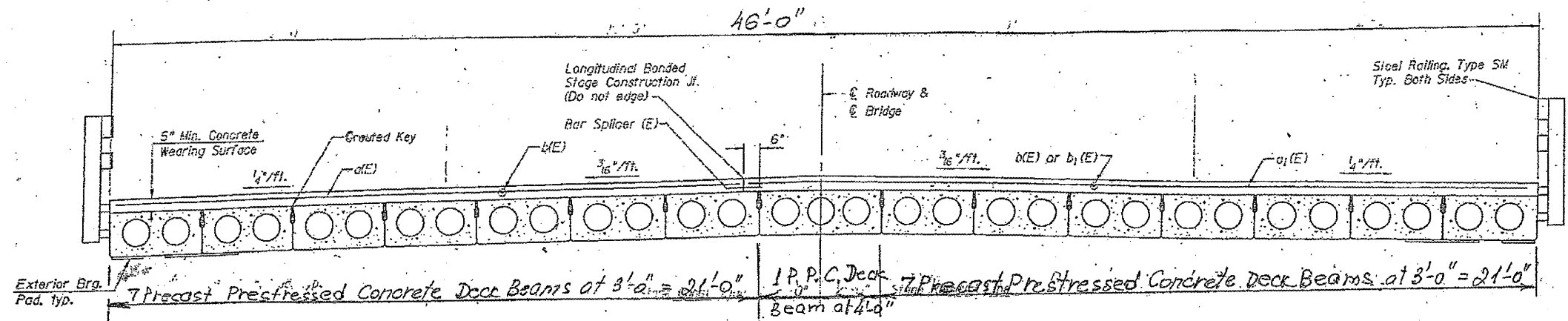
**ILLINOIS DEPARTMENT OF TRANSPORTATION**

**EXISTING PLANS**

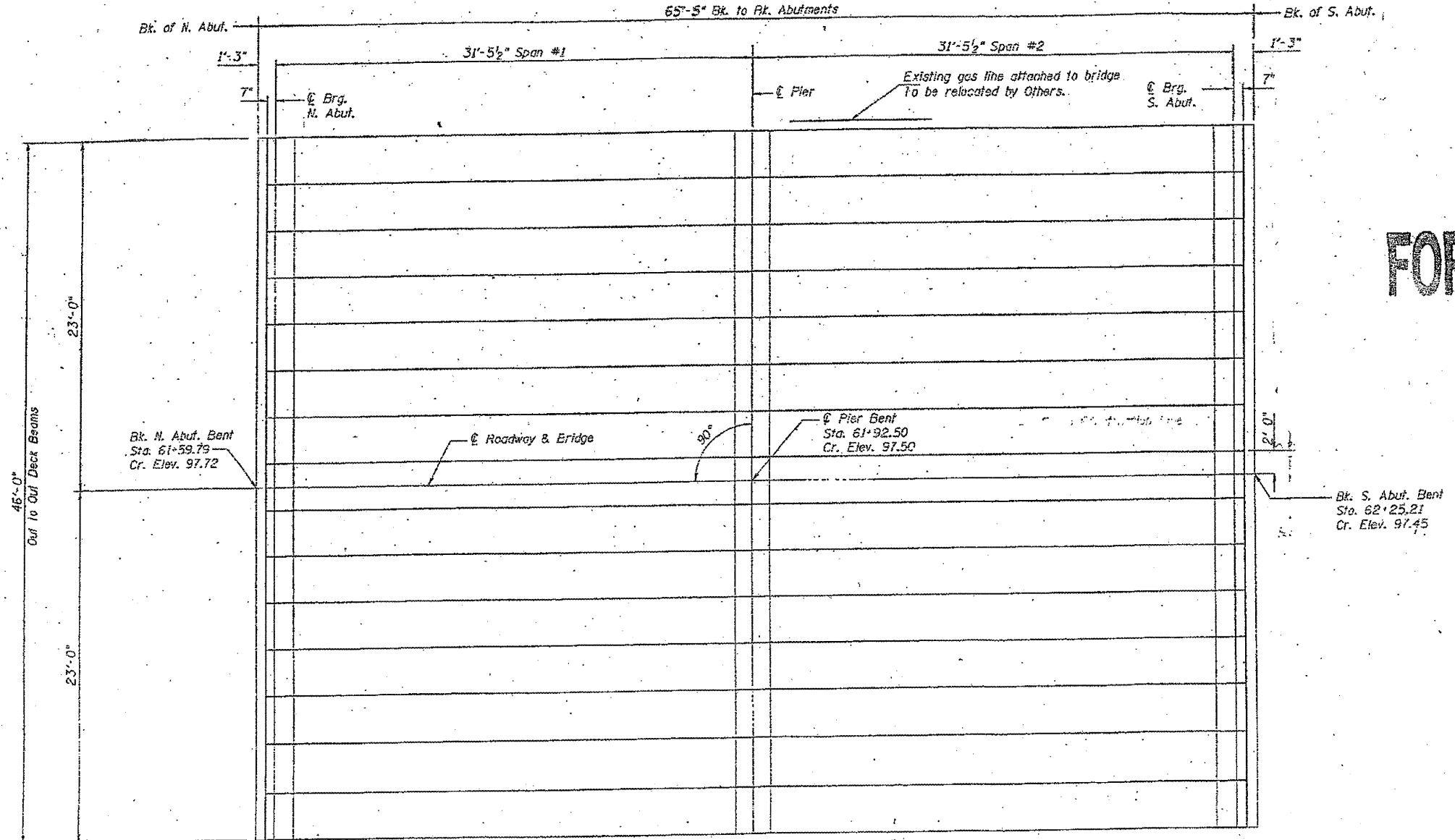
**LOCATION 8 (SN 016-2530)**

ROUTE	SECTION	COUNTY	TOTAL SHEETS	SHEET NUMBER
VARIOUS	2011-215-I	VARIOUS	22	18

CONTRACT NO. 60R57



CROSS SECTION  
(Looking South)



PLAN

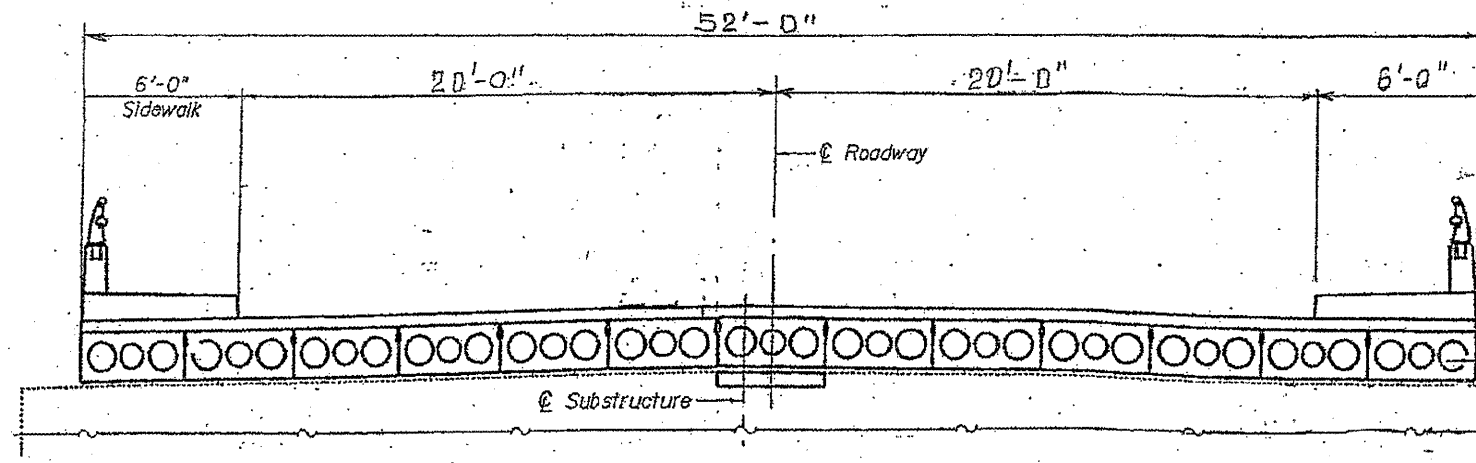
FOR INFORMATION ONLY

ILLINOIS DEPARTMENT OF  
TRANSPORTATION

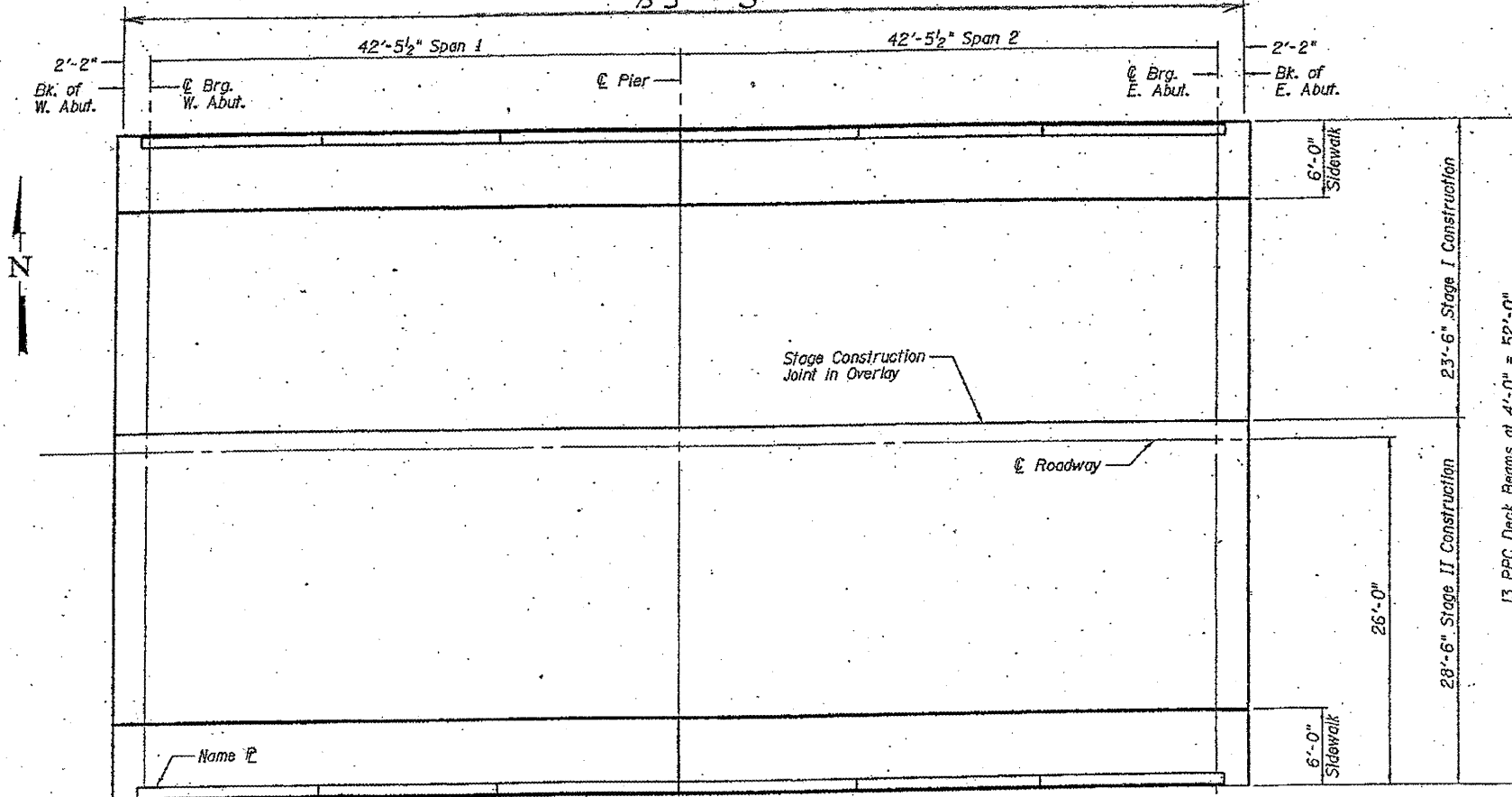
EXISTING PLANS  
LOCATION 9 (SN 045-0045)

ROUTE	SECTION	COUNTY	TOTAL SHEETS	SHEET NUMBER
VARIOUS	2011-215-I	VARIOUS	22	19

CONTRACT NO. 60R57



CROSS SECTION  
89'-3"



PLAN

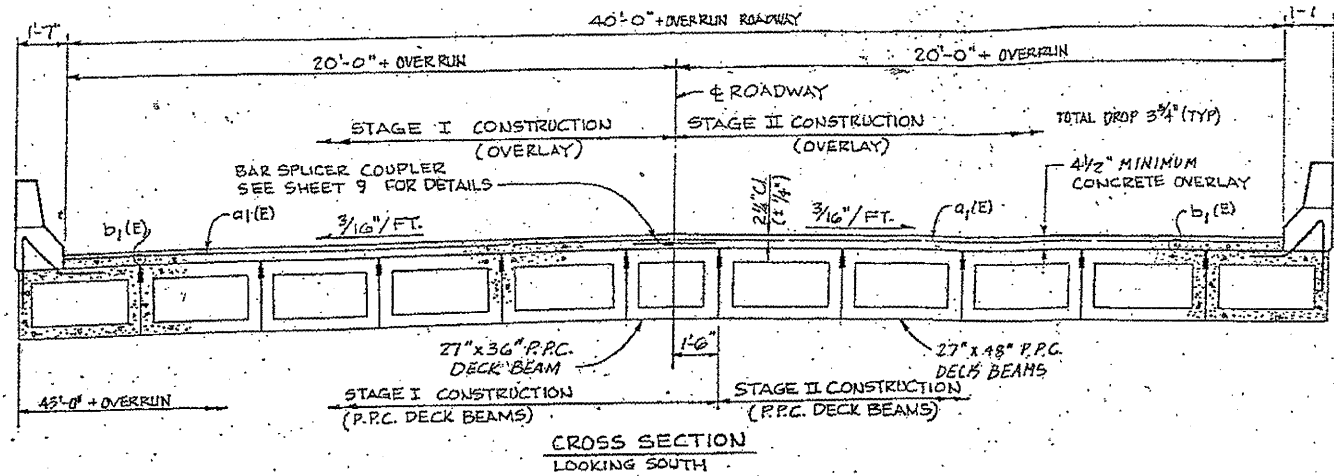
**FOR INFORMATION ONLY**

ILLINOIS DEPARTMENT OF  
TRANSPORTATION

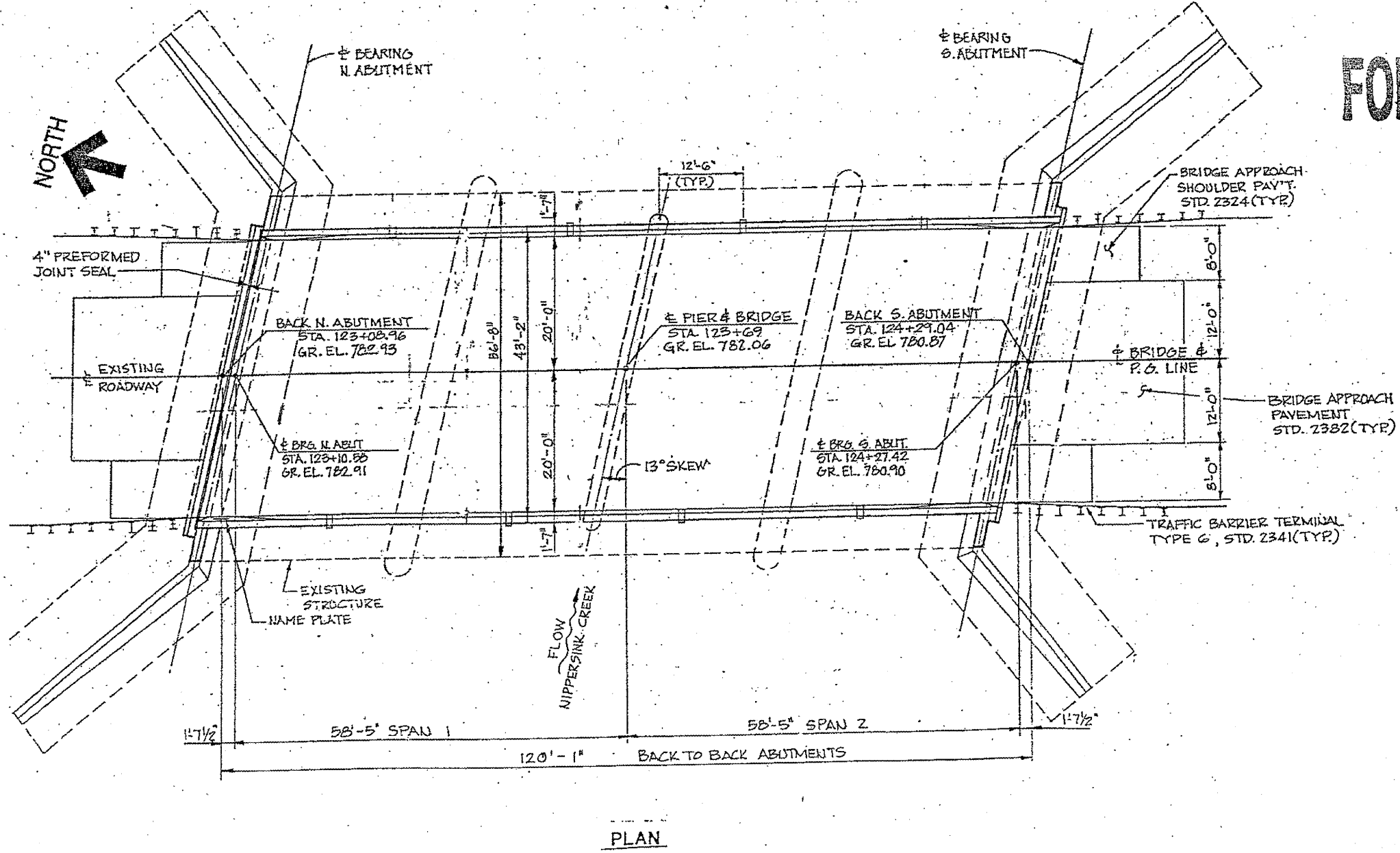
EXISTING PLANS  
LOCATION 10 (SN 049-0011)

ROUTE	SECTION	COUNTY	TOTAL SHEETS	SHEET NUMBER
VARIOUS	2011-215-I	VARIOUS	22	20

CONTRACT NO. 60R57

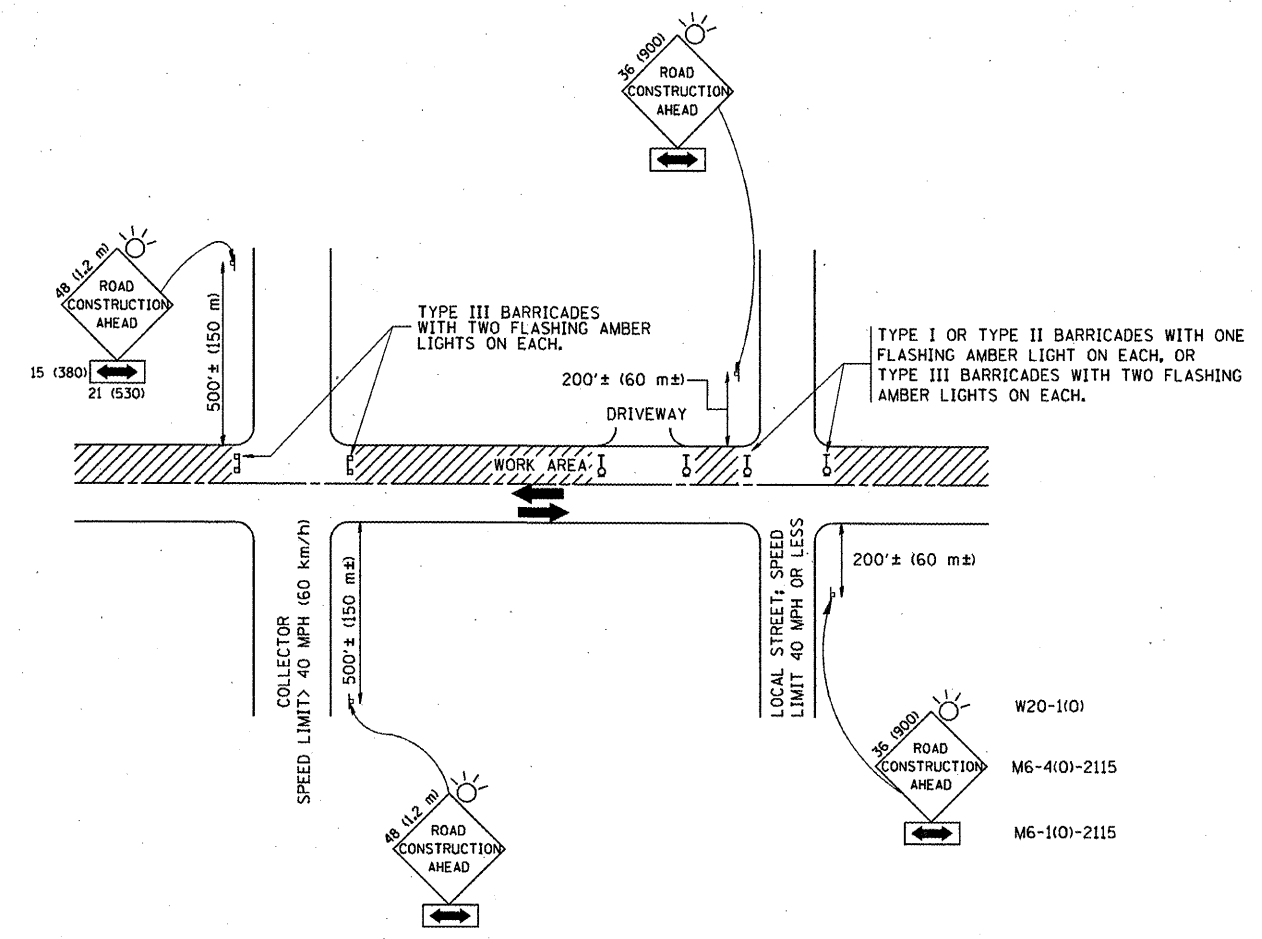


**FOR INFORMATION ONLY**



ILLINOIS DEPARTMENT OF  
TRANSPORTATION

EXISTING PLANS  
LOCATION 11 (SN 056-0019)



**TRAFFIC CONTROL AND PROTECTION FOR SIDE ROADS, INTERSECTIONS, AND DRIVEWAYS**

**NOTES:**

- A. FOR NO LANE RESTRICTION ON THE SIDE ROAD OR DRIVEWAYS**
- SIDE ROAD WITH A SPEED LIMIT OF 40 MPH (60 km/h) OR LESS AS SHOWN ON THE DRAWING AND AS DIRECTED BY THE ENGINEER:
    - ONE **ROAD CONSTRUCTION AHEAD** SIGN 36 x 36 (900x900) WITH A FLASHER AND FLAG MOUNTED ON IT APPROXIMATELY 200' (60 m) IN ADVANCE OF THE MAIN ROUTE.
    - THE CLOSED PORTION OF THE MAIN ROUTE SHALL BE PROTECTED BY BLOCKING WITH TYPE I, TYPE II OR TYPE III BARRICADES, 1/3 OF THE CROSS SECTION OF THE CLOSED PORTION.
  - SIDE ROAD WITH A SPEED LIMIT GREATER THAN 40 MPH (60 km/h) AS SHOWN ON THE DRAWING AND AS DIRECTED BY THE ENGINEER:
    - ONE **ROAD CONSTRUCTION AHEAD** SIGN 48 x 48 (1.2 m x 1.2 m) WITH A FLASHER MOUNTED ON IT APPROXIMATELY 500' (150 m) IN ADVANCE OF THE MAIN ROUTE.
    - THE CLOSED PORTION OF THE MAIN ROUTE SHALL BE PROTECTED BY BLOCKING WITH TYPE III BARRICADES, 1/2 OF THE CROSS SECTION OF THE CLOSED PORTION.
- B. FOR A LANE CLOSURE ON A SIDE ROAD OR DRIVEWAY:**
- USE APPLICABLE PORTIONS OF THE TYPICAL APPLICATION OF TRAFFIC CONTROL DEVICES (STD. 70150L, STD. 701606 OR THE APPROPRIATE STANDARD). THE SPACING OF SIGNS AND BARRICADES SHALL BE ADJUSTED FOR FIELD CONDITIONS AS DIRECTED BY THE ENGINEER. THE DIRECTIONAL ARROW SHALL BE COVERED OR REMOVED WHEN NO LONGER CONSISTENT WITH THE SIDE ROAD LANE CLOSURE.
- C. ADVANCE WARNING SIGNS ARE TO BE OMITTED ON DRIVEWAY UNLESS OTHERWISE NOTED.**
- D. THE TRAFFIC CONTROL AND PROTECTION FOR SIDE ROADS, INTERSECTIONS, AND DRIVEWAYS SHALL BE INCIDENTAL TO THE COST OF SPECIFIED TRAFFIC CONTROL STANDARDS OR ITEMS.**

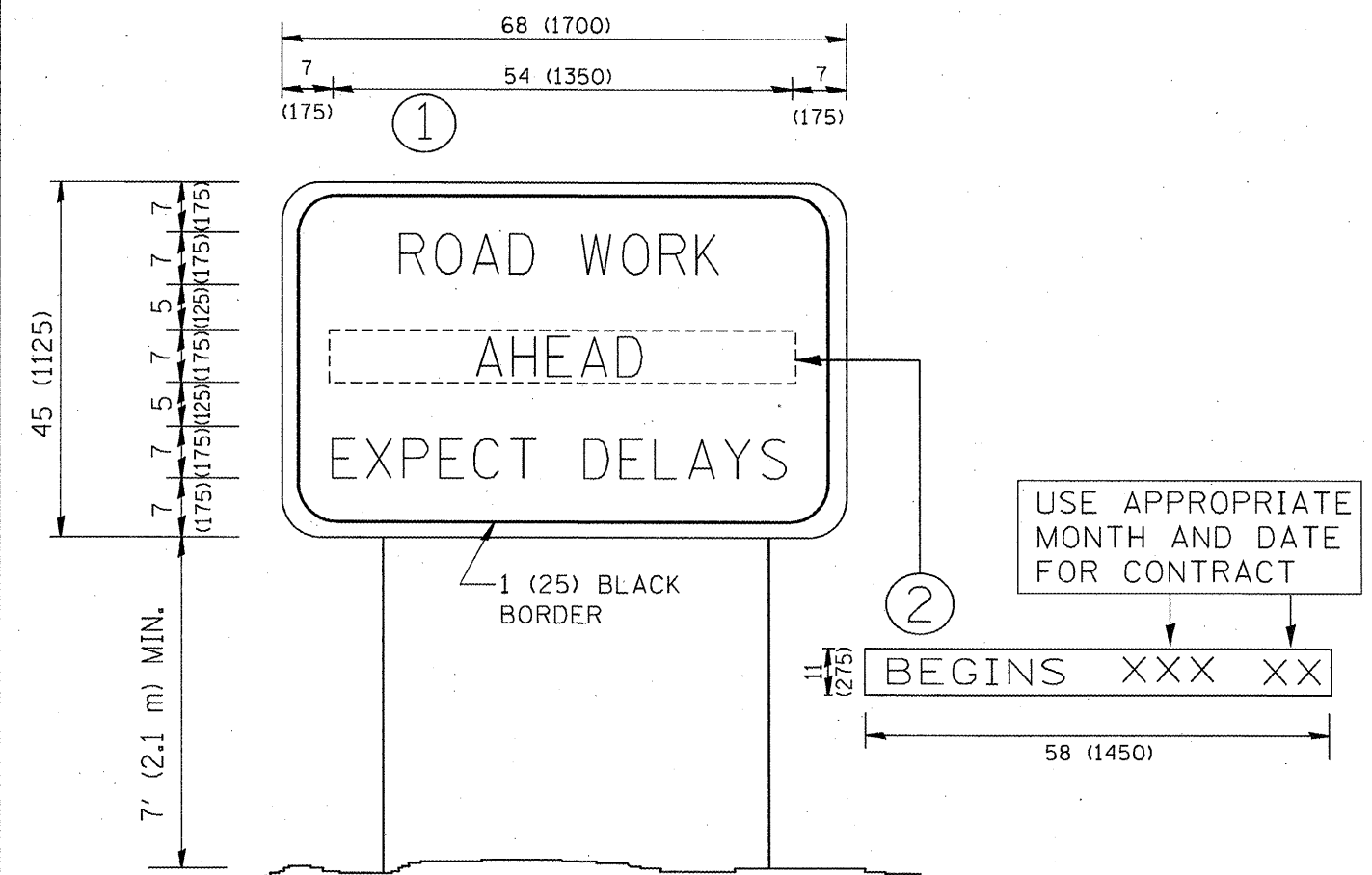
All dimensions are in millimeters (inches) unless otherwise shown.

FILE NAME = W:\diststd\22x34\tbl8.dgn	USER NAME = gaglionob	DESIGNED - LHA	REVISED - J. OBERLE 10-18-95
		DRAWN -	REVISED - A. HOUSEH 03-06-96
	PLOT SCALE = 50,000' / IN.	CHECKED -	REVISED - A. HOUSEH 10-15-96
	PLOT DATE = 1/4/2008	DATE - 06-89	REVISED - T. RAMMACHER 01-06-00

**STATE OF ILLINOIS  
DEPARTMENT OF TRANSPORTATION**

<b>TRAFFIC CONTROL AND PROTECTION FOR SIDE ROADS, INTERSECTIONS, AND DRIVEWAYS</b>			
SCALE: NONE	SHEET NO. 1 OF 1 SHEETS	STA.	TO STA.

F.A. RTE.	SECTION	COUNTY	TOTAL SHEETS	SHEET NO.
	2011-215-1	Various	22	21
			TC-10	CONTRACT NO. 60RS
FED. ROAD DIST. NO. 1 [ILLINOIS] FED. AID PROJECT				



**NOTES:**

1. USE BLACK LETTERING ON ORANGE BACKGROUND.
2. ERECT SIGNS IN ADVANCE OF THE LOCATION FOR THE "ROAD CONSTRUCTION AHEAD" SIGN AT LOCATIONS AS DIRECTED BY THE ENGINEER.
3. ERECT SIGN ① WITH INSTALLED PANEL ② ONE WEEK PRIOR TO THE START OF CONSTRUCTION.
4. REMOVE PANEL ② SOON AFTER THE START OF CONSTRUCTION.
5. SEE SPECIAL PROVISION FOR "TEMPORARY INFORMATION SIGNING" FOR ADDITIONAL INFORMATION.
6. ONE SIGN ASSEMBLY EQUALS 25.70 SQ. FT. (2.3 SQ. M.)
7. SHALL BE PAID FOR AS TEMPORARY INFORMATION SIGNING.

ALL DIMENSIONS ARE IN INCHES (MILLIMETERS)  
UNLESS OTHERWISE SHOWN.

FILE NAME = W:\dystatd\22x34\cc22.dgn	USER NAME = goglianobt	DESIGNED -	REVISED - R. MIRS 09-15-97
		DRAWN -	REVISED - R. MIRS 12-11-97
		CHECKED -	REVISED - T. RAMMACHER 02-02-99
		DATE -	REVISED - C. JUCIUS 01-31-07

**STATE OF ILLINOIS  
DEPARTMENT OF TRANSPORTATION**

SCALE: NONE	SHEET NO. 1 OF 1 SHEETS	STA.	TO STA.
-------------	-------------------------	------	---------

F.A. RTE.	SECTION	COUNTY	TOTAL SHEETS	SHEET NO.
Var	2011-215-1	Various	22	22
TC-22			CONTRACT NO. 60RS7	
FED. ROAD DIST. NO. 1 ILLINOIS FED. AID PROJECT				