

F.A.P. RTE.	SECTION	COUNTY	TOTAL SHEETS	SHEET NO.
307	130 R-2	DUPAGE, KANE	647*	1

D-91-101-02 #647+13-17=643 62410

STATE OF ILLINOIS
DEPARTMENT OF TRANSPORTATION
DIVISION OF HIGHWAYS

**PLANS FOR PROPOSED
HIGHWAY**

F.A.P. ROUTE 307 (ILLINOIS ROUTE 64)
SECTION: 130 R-2
DUNHAM ROAD TO ILLINOIS ROUTE 59
ADD LANES, BRIDGE REPLACEMENT, LIGHTING,
RESURFACING AND TRAFFIC SIGNALS
PROJECT NO. NHF-0307(033)
DUPAGE AND KANE COUNTIES
C-91-101-02



LOCATION OF SECTION INDICATED THUS: — ■ —

INDEX OF SHEETS
FOR INDEX OF SHEETS, SEE SHEET NO. 2

TRAFFIC DATA
ILLINOIS ROUTE 64

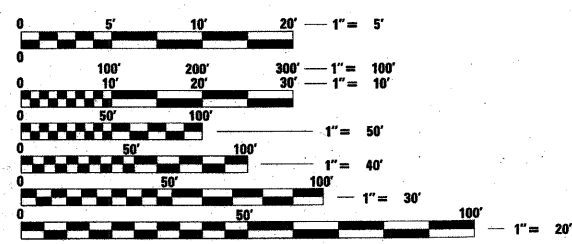
(38TH AVENUE TO KAUTZ /SMITH ROAD)
POSTED SPEED = 40 MPH
DESIGN SPEED = 50 MPH

(KAUTZ /SMITH ROAD TO ILLINOIS ROUTE 59)
POSTED SPEED = 50 MPH
DESIGN SPEED = 50 MPH

ADT 37,200 (2009) 45,000 (2020)

DESIGN DESIGNATION
3690 (20) ARTERIAL 16.95 (PCC-20)

PROJECT LOCATED IN THE
CITIES OF ST. CHARLES
AND WEST CHICAGO



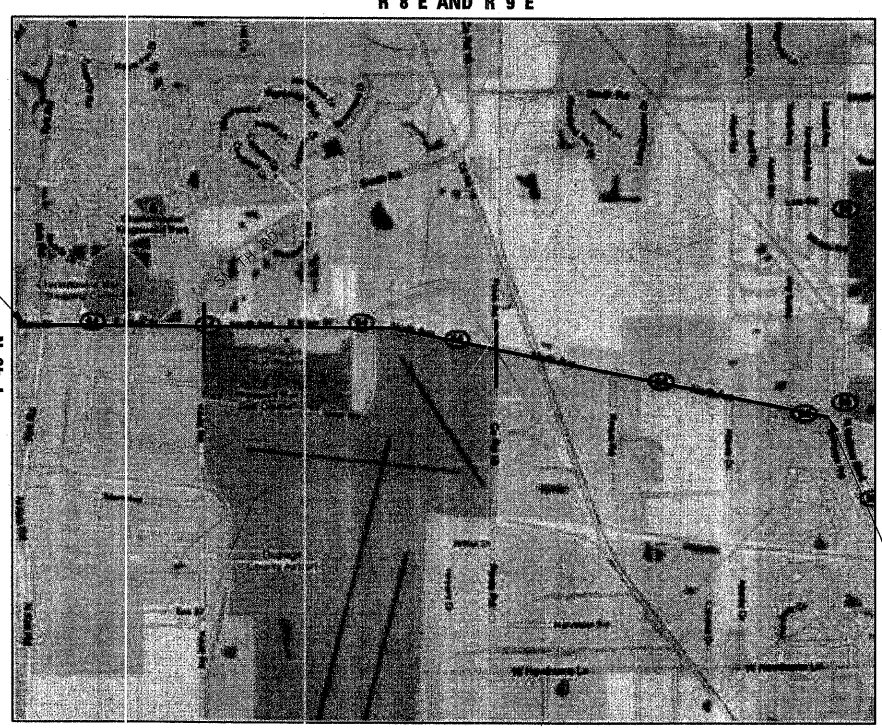
FULL SIZE PLANS HAVE BEEN PREPARED USING STANDARD ENGINEERING SCALES. REDUCED SIZED PLANS WILL NOT CONFORM TO STANDARD SCALES. IN MAKING MEASUREMENTS ON REDUCED PLANS, THE ABOVE SCALES MAY BE USED.

J.U.L.I.E.
JOINT UTILITY LOCATION INFORMATION FOR EXCAVATION
1-800-892-0123

CONTRACT NO. 62410

FAP RTE. 307 OVER UPRR AND E&ERR
STRUCTURE NO. 022-0190
(STA. 3356 + 32.02 TO STA. 3359 + 30.40)
REMOVE EXISTING 6-SPAN PPC
DECK BEAM BRIDGE AND CONSTRUCT
4-SPAN CONTINUOUS COMPOSITE STEEL
WF BEAM BRIDGE ON PILE BENT
ABUTMENTS AND CONCRETE PIERS.
UTILIZE STAGED CONSTRUCTION.

RETAINING WALLS
NORTHWEST: 022-W027
NORTHEAST: 022-W028
SOUTHWEST: 022-W029
SOUTHEAST: 022-W030



WAYNE AND ST. CHARLES TOWNSHIPS
GROSS LENGTH OF PROJECT = 19,014.01 LIN. FT. = 3.601 MILES
NET LENGTH OF PROJECT = 18,715.63 LIN. FT. = 3.545 MILES



Nathan J. Holman
NATHAN J. HOLMAN
1-16, 20-03, 50-192, 179-227, 242-223, 270-184
200-402 SHEET NOS. 404-404
200-048

11/30/11
EXPIRES
5/13/11
DATE



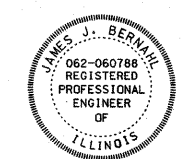
James P. Coleman
JAMES P. COLEMAN
45-443
SHEET NOS.

11/30/11
EXPIRES
5/13/11
DATE



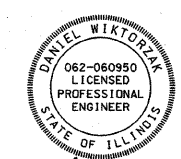
Matthew J. Pregmon
MATTHEW J. PREGMON
444-545
SHEET NOS.

11/30/12
EXPIRES
5/13/11
DATE



James J. Bernahl
JAMES J. BERNAHL
193-198
SHEET NOS.

11/30/11
EXPIRES
5-13-11
DATE



Daniel W. Wiktoria
DANIEL WIKTORZAK
323-327, 385-387,
395-399, SHEET NOS. 403

11/30/11
EXPIRES
5/13/11
DATE

STATE OF ILLINOIS
DEPARTMENT OF TRANSPORTATION
DIVISION OF HIGHWAYS

SUBMITTED: October 31, 2011

Diana M. O'Keefe
DIANA M. O'KEEFE
DEPUTY DIRECTOR OF HIGHWAYS, REGION ENGINEER

December 9, 2011

Scott E. Slitt, P.E.
SCOTT E. SLITT, P.E.
acting ENGINEER OF DESIGN AND ENVIRONMENT

December 9, 2011

William R. Funder
WILLIAM R. FUNDER
DIRECTOR OF HIGHWAYS, CHIEF ENGINEER

PRINTED BY THE AUTHORITY
OF THE STATE OF ILLINOIS

AECOM 303 EAST WACKER DRIVE
SUITE 600
CHICAGO, IL 60601
(312) 938-0300

DISTRICT ONE - DESIGN /KEN ENG (847) 705-4247