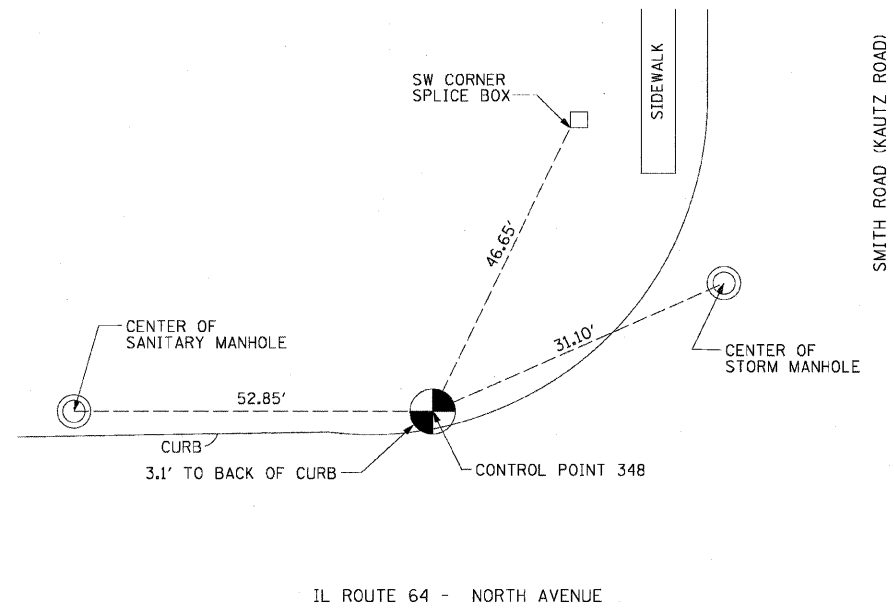
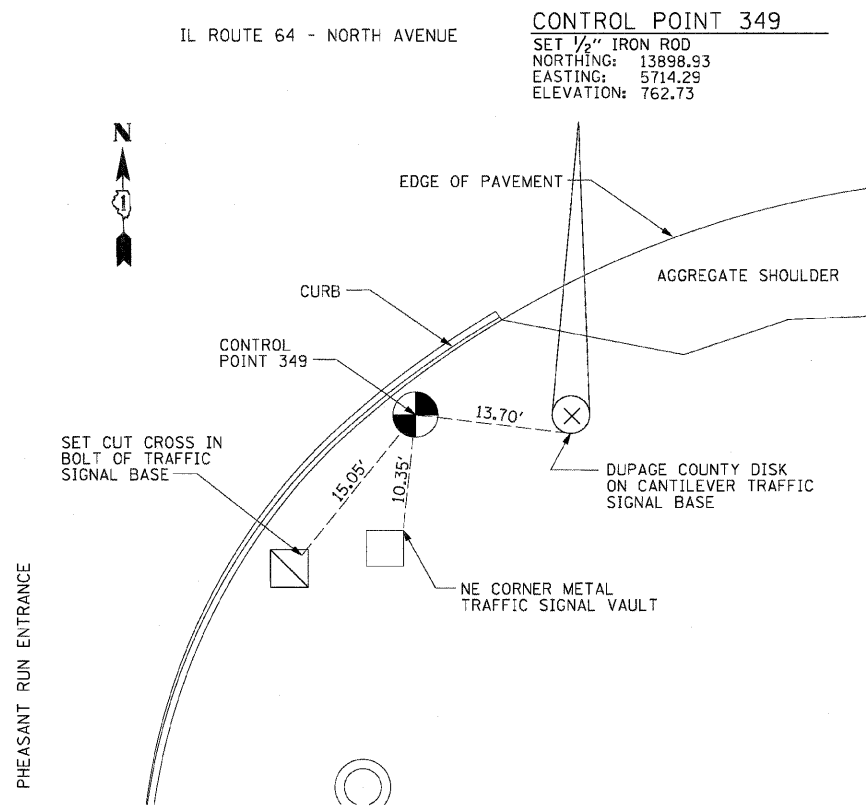


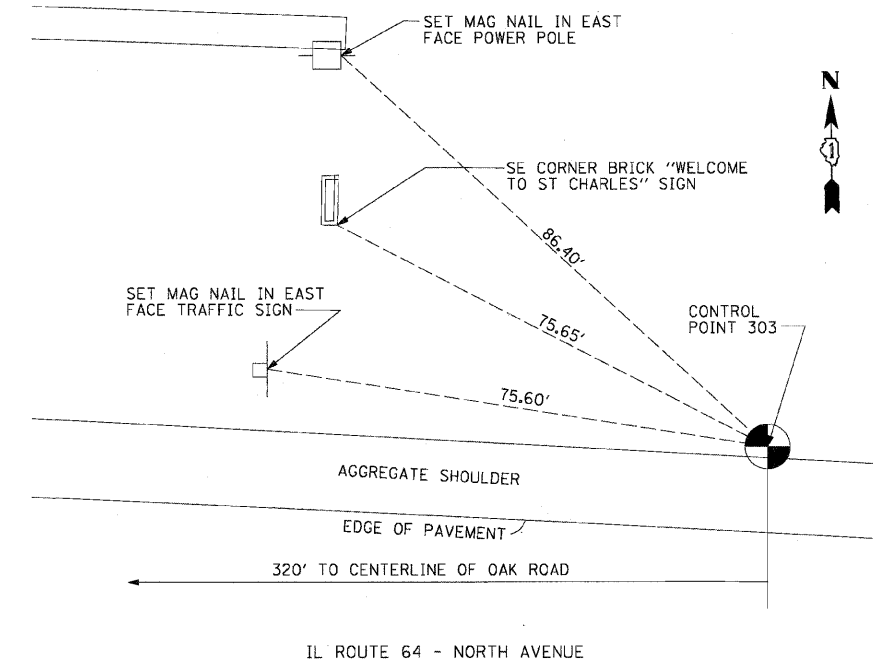
F.A.P. RTE.	SECTION	COUNTY	TOTAL SHEETS	SHEET NO.
307	130 R-2	DUPAGE, KANE	647	52
STA. TO STA.		ILLINOIS FED. AID PROJECT		
		62410		



**CONTROL POINT 348**  
 SET 1/2" IRON ROD  
 NORTHING: 13946.76  
 EASTING: 3434.05  
 ELEVATION: 765.55

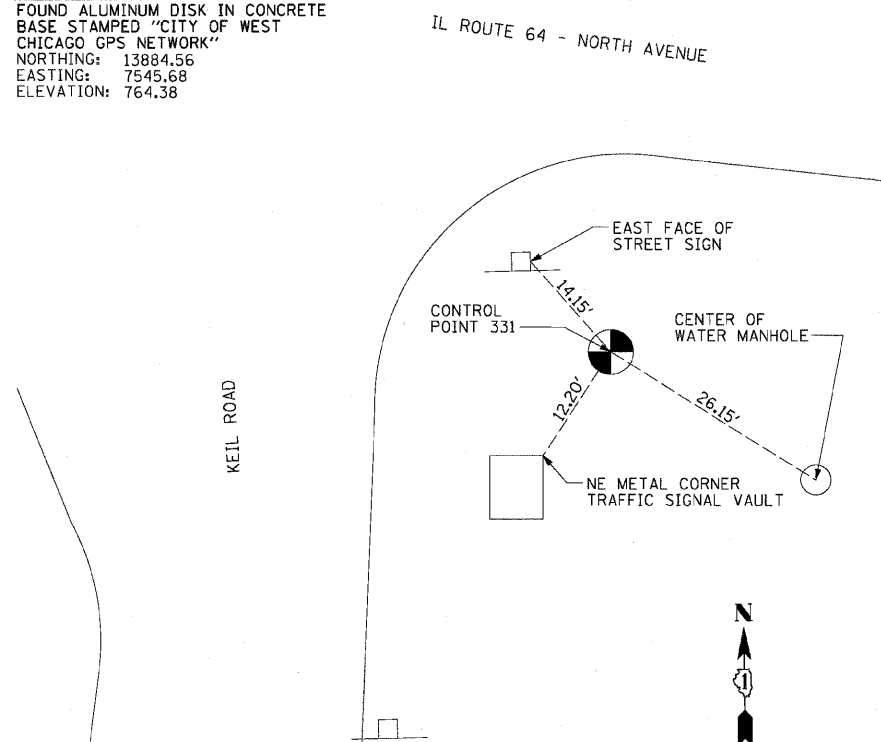


**CONTROL POINT 349**  
 SET 1/2" IRON ROD  
 NORTHING: 13898.93  
 EASTING: 5714.29  
 ELEVATION: 762.73

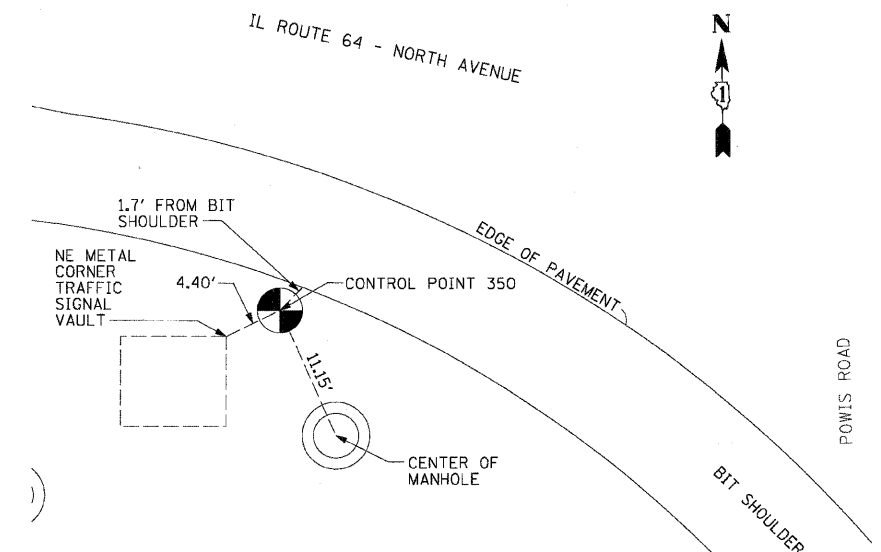
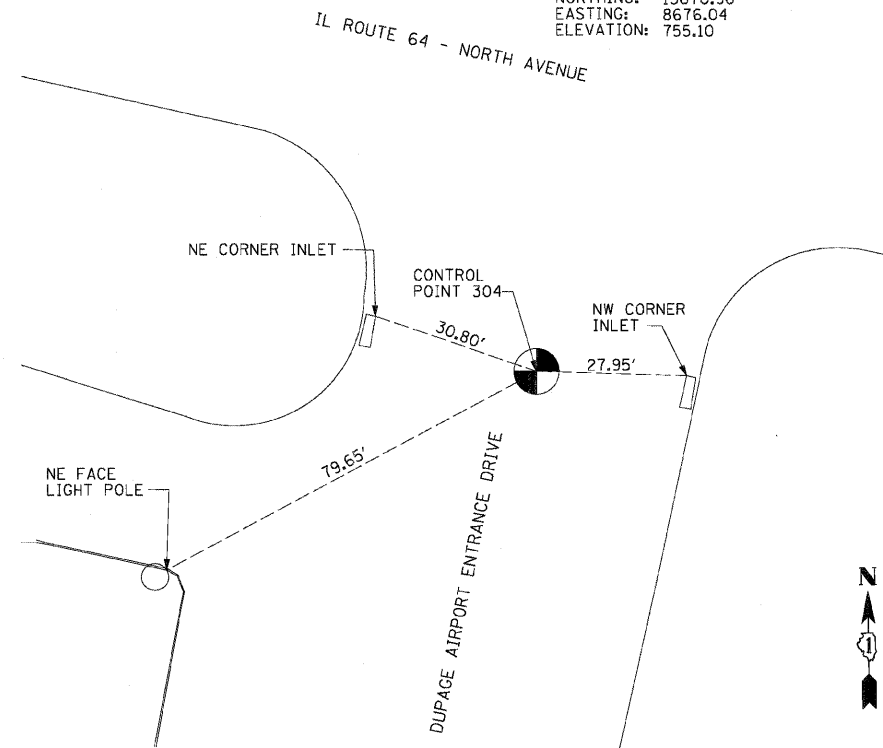


**CONTROL POINT 303**  
 FOUND 5/8" IRON ROD  
 NORTHING: 14006.50  
 EASTING: 7126.61  
 ELEVATION: 758.56

**CONTROL POINT 331**  
 FOUND ALUMINUM DISK IN CONCRETE  
 BASE STAMPED "CITY OF WEST  
 CHICAGO GPS NETWORK"  
 NORTHING: 13884.56  
 EASTING: 7545.68  
 ELEVATION: 764.38



**CONTROL POINT 304**  
 FOUND MAG NAIL  
 NORTHING: 13670.96  
 EASTING: 8676.04  
 ELEVATION: 755.10



**CONTROL POINT 350**  
 SET 1/2" IRON ROD  
 NORTHING: 13393.86  
 EASTING: 10102.19  
 ELEVATION: 756.10

REVISIONS	
NAME	DATE

ILLINOIS DEPARTMENT OF TRANSPORTATION  
 F.A.P. ROUTE 307 (ILLINOIS ROUTE 64)

ALIGNMENT, TIES AND  
 CONTROL POINTS

SCALE: VERT: 1"=200'  
 HORIZ: 1"=200'  
 DATE: MAY 13, 2011

DRAWN BY: JWM  
 CHECKED BY: RMG

