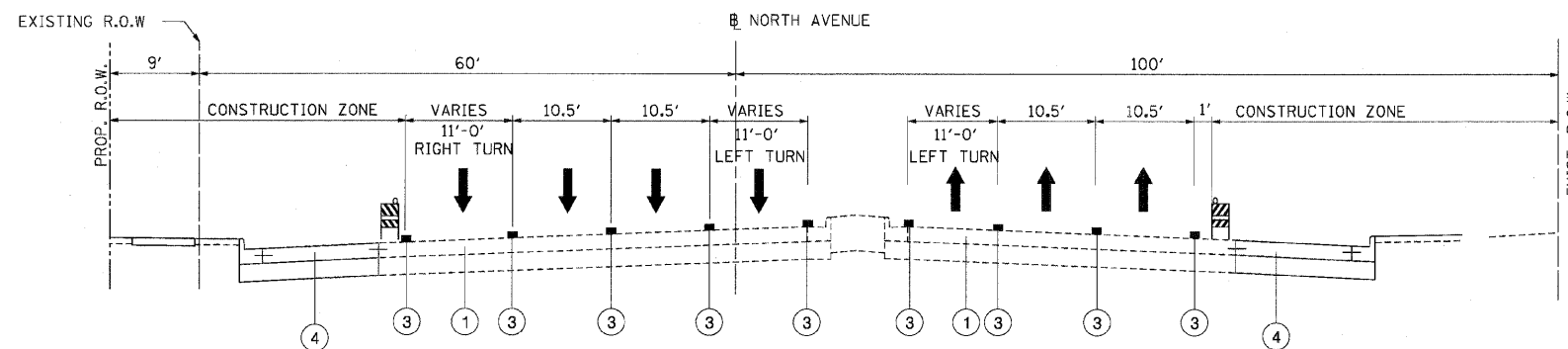


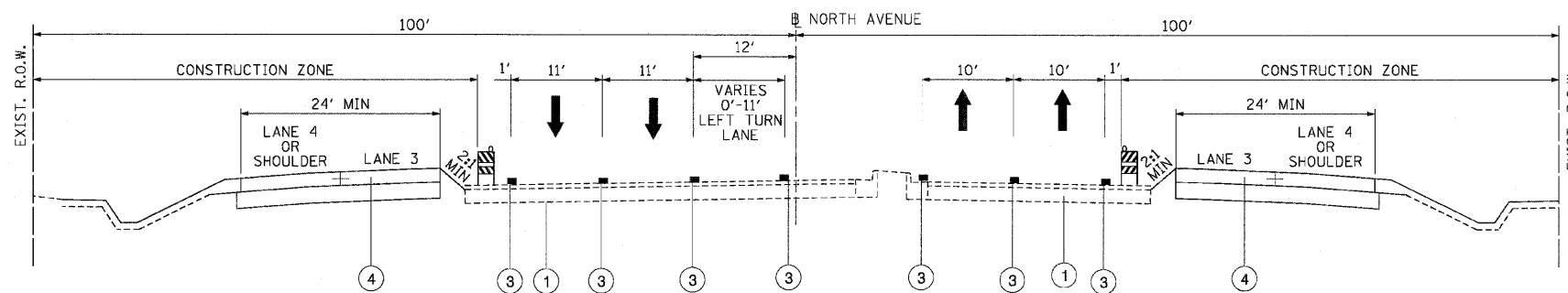
F.A.P. RTE.	SECTION	COUNTY	TOTAL SHEETS	SHEET NO.
307	130 R-2	DUPAGE,KANE	647	98
STA.	TO STA.			
FED. ROAD DIST. NO.	ILLINOIS	FED. AID PROJECT		

62410



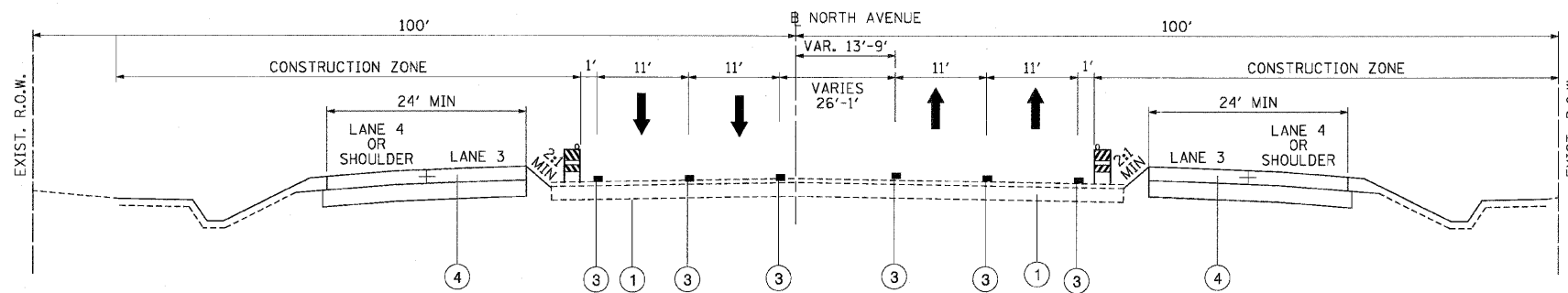
CONSTRUCTION STAGING TYPICAL SECTION
NORTH AVENUE, STAGE 1

STA. 3266+95 TO STA. 3280+66



CONSTRUCTION STAGING TYPICAL SECTION
NORTH AVENUE, STAGE 1 & 1A

STA. 3280+66 TO STA. 3285+80



CONSTRUCTION STAGING TYPICAL SECTION
NORTH AVENUE, STAGE 1 & 1A

STA. 3285+80 TO STA. 3292+10

M.O.T. LEGEND:

- ① EXISTING PAVEMENT
- ② TEMPORARY PAVEMENT
- ③ TEMPORARY PAVEMENT MARKING
- ④ PROPOSED PAVEMENT
- ⑤ TEMPORARY BARRIER WALL
- ⑥ PROPOSED MSE WALL
- ⑦ TEMPORARY MSE WALL

REVISIONS	
NAME	DATE

ILLINOIS DEPARTMENT OF TRANSPORTATION
 F.A.P. ROUTE 307 (ILLINOIS ROUTE 64)
SUGGESTED STAGES OF CONSTRUCTION AND TRAFFIC CONTROL
TYPICAL SECTIONS - STAGE 1 & 1A
 VERT: NONE
 SCALE: HORIZ: NONE
 DATE: MAY 13, 2011
 DRAWN BY: KK - JWM
 CHECKED BY: RMG

