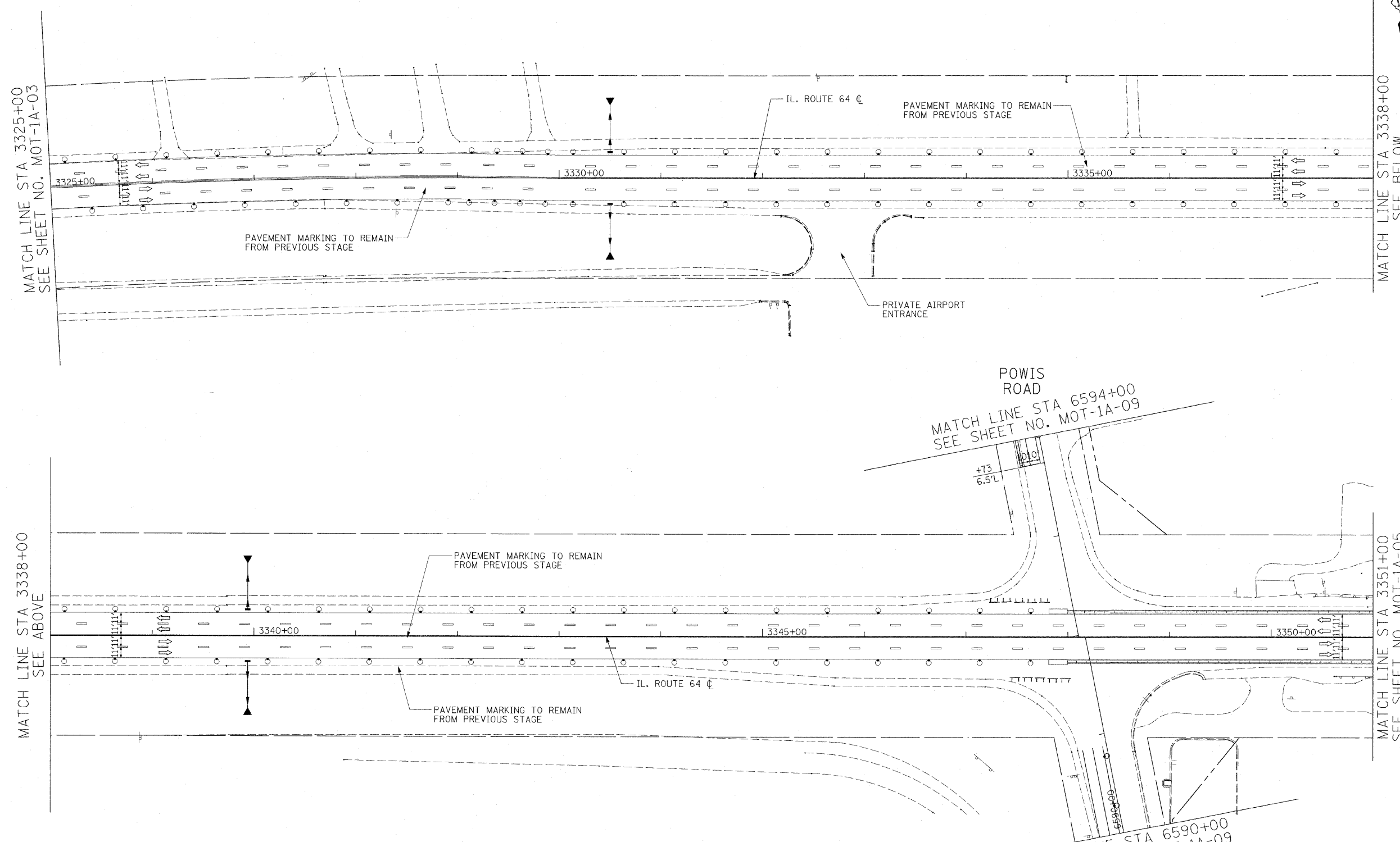


F.A.P. RTE.	SECTION	COUNTY	TOTAL SHEETS	SHEET NO.
307	130 R-2	DUPAGE, KANE	647	120
STA.	TO STA.			
FED. ROAD DIST. NO.	ILLINOIS	FED. AID PROJECT	62410	



- LEGEND:**
- TEMPORARY HMA PAVEMENT
  - DIRECTION OF TRAFFIC
  - TYPE I OR II BARRICADES
  - TEMPORARY CONCRETE BARRIER
  - IMPACT ATTENUATOR
  - TYPE III BARRICADES
  - 4" EDGE LINE
  - 4" DOUBLE CENTER LINE - YELLOW
  - 4" SKIP DASH LINE (30' SKIP/10' DASH) - WHITE
  - 4" SKIP DASH LINE (6' SKIP/2' DASH) - WHITE
  - 6" LANE LINE - WHITE
  - 24" STOP BAR - WHITE
  - LETTERS AND SYMBOLS

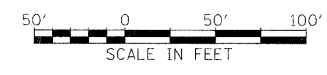
- NOTES:**
1. ALL APPLICABLE STATE STANDARDS SHALL BE APPLIED AT ALL CROSS STREETS AND AT THE PROJECT LIMITS.
  2. ALL TEMPORARY INFORMATION SIGNS ALONG NORTH AVENUE SHALL REMAIN FROM THE PREVIOUS STAGE. ALL SIGNS REMOVED SHALL BE VERIFIED BY THE ENGINEER.
  3. MUST MAINTAIN ACCESS TO DUPAGE AIRPORT AT ALL TIMES.

MATCH LINE STA 3338+00  
SEE ABOVE

MATCH LINE STA 3351+00  
SEE SHEET NO. MOT-1A-05

POWIS ROAD  
MATCH LINE STA 6594+00  
SEE SHEET NO. MOT-1A-09

MATCH LINE STA 6590+00  
SEE SHEET NO. MOT-1A-09  
POWIS ROAD



REVISIONS	
NAME	DATE

ILLINOIS DEPARTMENT OF TRANSPORTATION  
 F.A.P. ROUTE 307 (ILLINOIS ROUTE 64)

**SUGGESTED STAGES OF CONSTRUCTION AND TRAFFIC CONTROL  
 STAGE 1A**

SCALE: VERT: NONE  
 HORIZ: 1"=50'  
 DATE: DECEMBER 2, 2011

DRAWN BY: AFC  
 CHECKED BY: NJH