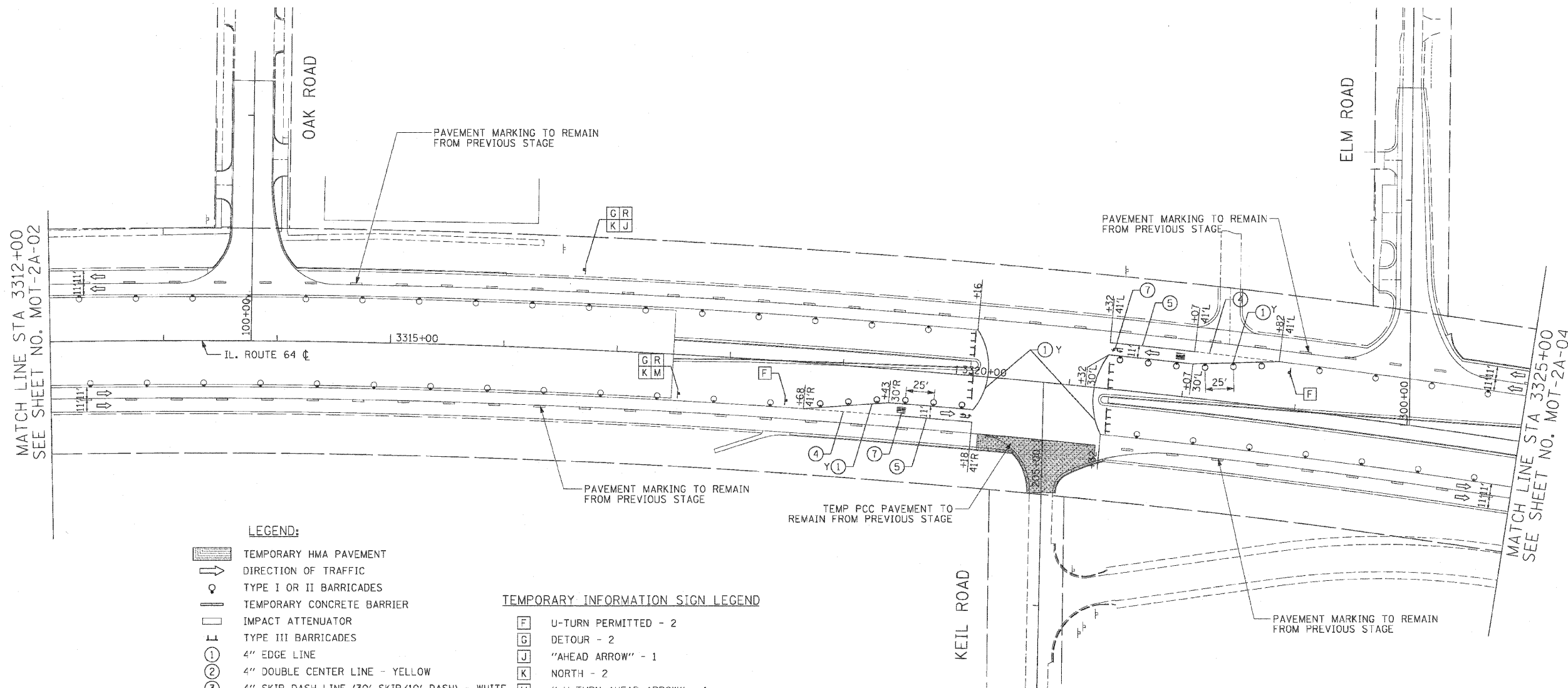


F.A.P. RTE.	SECTION	COUNTY	TOTAL SHEETS	SHEET NO.
307	130 R-2	DUPAGE, KANE	647	139
STA.		TO STA.		
FED. ROAD DIST. NO.		ILLINOIS FED. AID PROJECT		

62410



- LEGEND:**
- TEMPORARY HMA PAVEMENT
 - DIRECTION OF TRAFFIC
 - TYPE I OR II BARRICADES
 - TEMPORARY CONCRETE BARRIER
 - IMPACT ATTENUATOR
 - TYPE III BARRICADES
 - 4" EDGE LINE
 - 4" DOUBLE CENTER LINE - YELLOW
 - 4" SKIP DASH LINE (30' SKIP/10' DASH) - WHITE
 - 4" SKIP DASH LINE (6' SKIP/2' DASH) - WHITE
 - 6" LANE LINE - WHITE
 - 24" STOP BAR - WHITE
 - LETTERS AND SYMBOLS
- TEMPORARY INFORMATION SIGN LEGEND**
- U-TURN PERMITTED - 2
 - DETOUR - 2
 - "AHEAD ARROW" - 1
 - NORTH - 2
 - " U-TURN AHEAD ARROW" - 1
 - PHEASANT RUN ENTRANCE - 2

- NOTES:**
- ALL APPLICABLE STATE STANDARDS SHALL BE APPLIED AT ALL CROSS STREETS AND AT THE PROJECT LIMITS.
 - THE ENGINEER SHALL DETERMINE THE "ONE WAY" TEMPORARY INFORMATION SIGNS ALONG NORTH AVENUE THAT SHALL REMAIN FROM THE PREVIOUS STAGE. ALL SIGNS REMOVED FROM THE PREVIOUS STAGE SHALL BE CONFIRMED BY THE ENGINEER.
 - MUST MAINTAIN ACCESS TO DUPAGE AIRPORT AT ALL TIMES.



REVISIONS	
NAME	DATE

MOT-2A-03

ILLINOIS DEPARTMENT OF TRANSPORTATION
 F.A.P. ROUTE 307 (ILLINOIS ROUTE 64)

SUGGESTED STAGES OF CONSTRUCTION AND TRAFFIC CONTROL
 STAGE 2A

SCALE: VERT: NONE
 HORIZ: 1"=50'
 DATE: NOVEMBER 1, 2011

DRAWN BY: AFC
 CHECKED BY: NJH