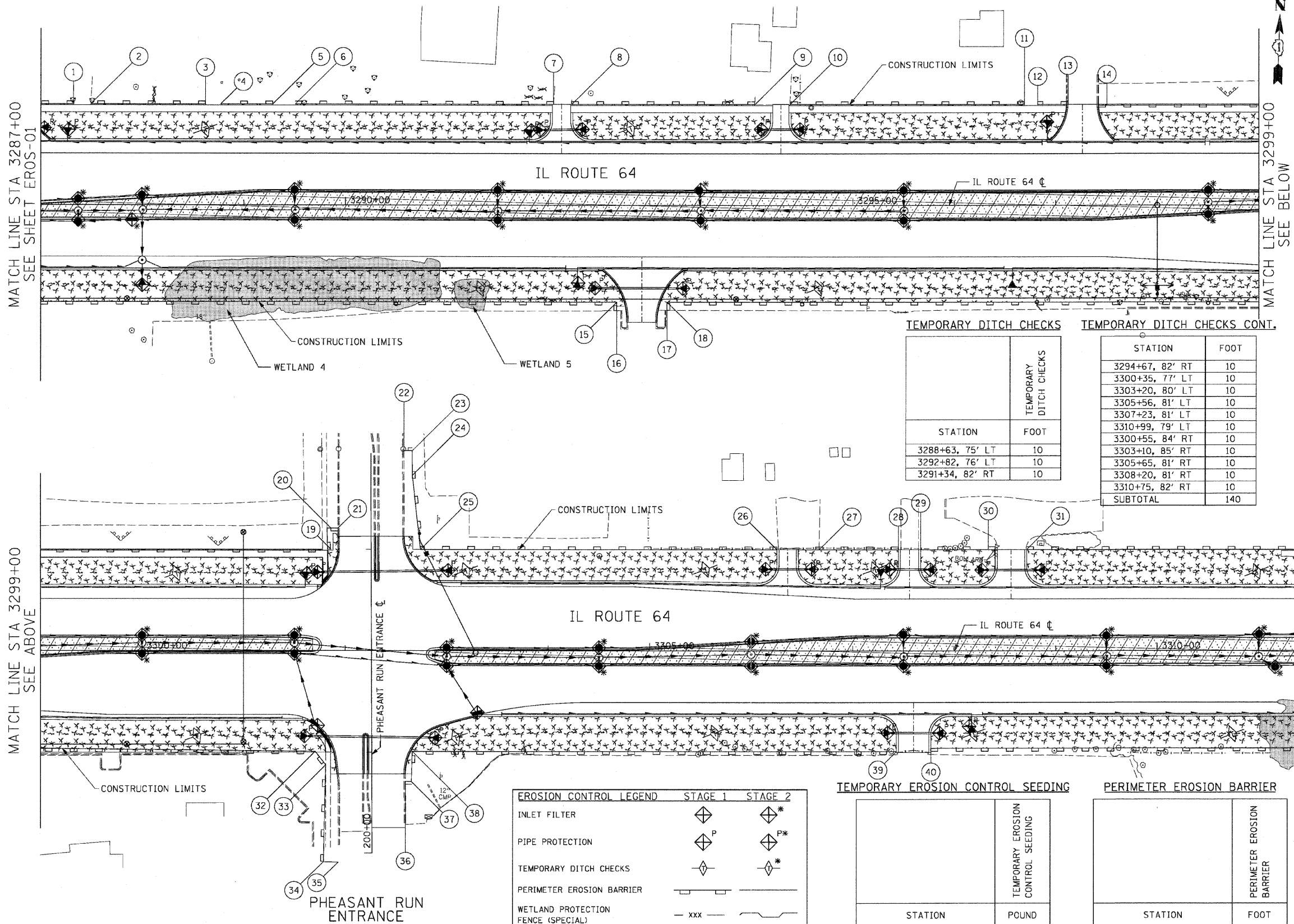


F.A.P. RTE.	SECTION	COUNTY	TOTAL SHEETS	SHEET NO.
307	130 R-2	DUPAGE, KANE	647	155
STA. 3287+00		TO STA. 3312+00		
FED. ROAD DIST. NO.		ILLINOIS FED. AID PROJECT		

62410



**PERIMETER BARRIER LOCATIONS**

POINT	STATION	OFFSET
1	3287+32.2	100.0' LT
2	3287+49.3	100.0' LT
3	3288+62.1	100.0' LT
4	3288+77.1	100.0' LT
5	3289+28.4	100.0' LT
6	3289+50.6	100.0' LT
7	3292+05.1	100.0' LT
8	3292+22.9	100.0' LT
9	3294+03.3	100.0' LT
10	3294+37.9	100.0' LT
11	3296+69.1	100.0' LT
12	3296+82.2	100.0' LT
13	3297+11.9	100.0' LT
14	3297+50.7	100.0' LT
15	3292+67.4	96.0' RT
16	3292+70.2	104.4' RT
17	3293+16.9	104.0' RT
18	3293+16.9	96.0' RT
19	3301+86.2	100.0' LT
20	3301+86.2	121.0' LT
21	3301+93.0	121.0' LT
22	3302+58.0	198.0' LT
23	3302+66.2	197.8' LT
24	3302+66.3	173.4' LT
25	3302+74.3	100.1' LT
26	3306+25.5	100.0' LT
27	3306+67.0	100.0' LT
28	3307+45.0	100.0' LT
29	3307+67.0	100.0' LT
30	3308+40.5	100.0' LT
31	3308+71.4	100.0' LT
32	3301+70.5	99.0' RT
33	3301+80.9	112.3' RT
34	3301+78.8	209.0' RT
35	3301+93.5	209.3' RT
36	3302+59.5	128.7' RT
37	3302+65.4	128.9' RT
38	3302+66.1	99.0' RT
39	3307+43.0	99.0' RT
40	3307+77.0	96.0' RT

**TEMPORARY DITCH CHECKS**

STATION	FOOT
3288+63, 75' LT	10
3292+82, 76' LT	10
3291+34, 82' RT	10
3294+67, 82' RT	10
3300+35, 77' LT	10
3303+20, 80' LT	10
3305+56, 81' LT	10
3307+23, 81' LT	10
3310+99, 79' LT	10
3300+55, 84' RT	10
3303+10, 85' RT	10
3305+65, 81' RT	10
3308+20, 81' RT	10
3310+75, 82' RT	10
<b>SUBTOTAL</b>	<b>140</b>

**TEMPORARY EROSION CONTROL SEEDING**

STATION	POUND
3287+00 TO 3299+00, LT	397
3287+00 TO 3299+00, RT	873
3299+00 TO 3312+00, LT	507
3299+00 TO 3312+00, RT	523
<b>SUBTOTAL</b>	<b>2,300</b>

**PERIMETER EROSION BARRIER**

STATION	FOOT
3287+00 TO 3299+00, LT	1,051
3287+00 TO 3299+00, RT	1,167
3299+00 TO 3312+00, LT	1,268
3299+00 TO 3312+00, RT	1,334
<b>SUBTOTAL</b>	<b>4,820</b>

**EROSION CONTROL LEGEND**

	STAGE 1	STAGE 2
INLET FILTER		
PIPE PROTECTION		
TEMPORARY DITCH CHECKS		
PERIMETER EROSION BARRIER		
WETLAND PROTECTION FENCE (SPECIAL)		
AGGREGATE (EROSION CONTROL)		
TEMPORARY EROSION CONTROL SEEDING / MULCH METHOD 2		

**EROS-02**

REVISIONS	NAME	DATE

ILLINOIS DEPARTMENT OF TRANSPORTATION  
 F.A.P. ROUTE 307 (ILLINOIS ROUTE 64)  
**EROSION CONTROL PLAN**  
 IL ROUTE 64  
 STA. 3287+00 TO STA. 3312+00  
 SCALE: VERT: NONE  
 HORIZ: 1"=50'  
 DATE: NOVEMBER 1, 2011  
 DRAWN BY: KNO - JWM  
 CHECKED BY: MDD

