

F.A.P. RTE.	SECTION	COUNTY	TOTAL SHEETS	SHEET NO.
307	130 R-2	DUPAGE, KANE	647	163
STA. 9840+94		TO STA. 9856+83		
FED. ROAD DIST. NO.		ILLINOIS	FED. AID PROJECT	

62410

INLET AND PIPE PROTECTION

STATION	DESCRIPTION	INLET AND PIPE PROTECTION
		EACH
KAUTZ/SMITH RD		
9843+51, 24' RT	IN	1
9843+51, 31' LT	CB	1
9844+65, 31' LT	CB	1
9844+65, 31' RT	IN	1
9846+96, 31' RT	CB	1
9853+77, 31' RT	CB	1
9853+77, 35' LT	IN	1
9855+27, 25' LT	IN	1

TEMPORARY EROSION CONTROL SEEDING

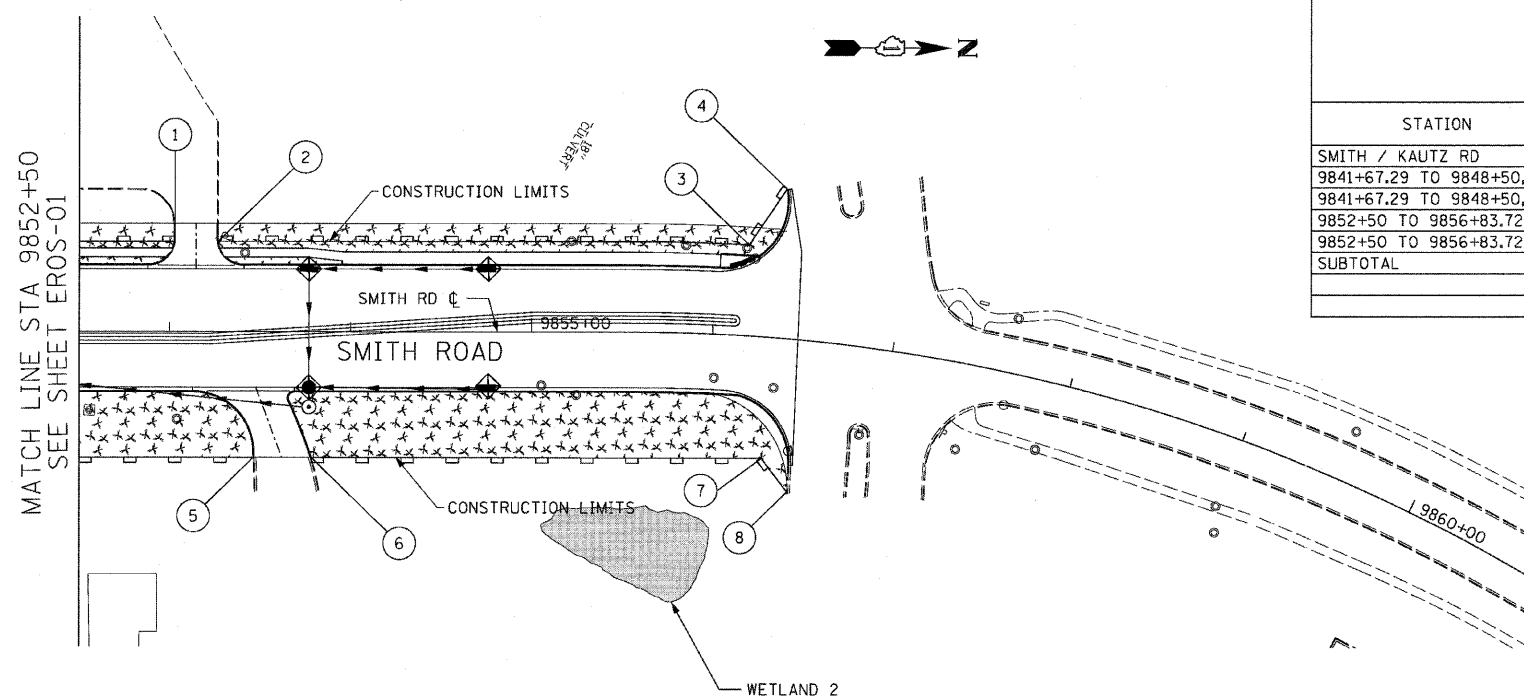
STATION	POUND
SMITH / KAUTZ RD	
9841+67.29 TO 9848+50, LT	66
9841+67.29 TO 9848+50, RT	122
9852+50 TO 9856+83.72, LT	68
9852+50 TO 9856+83.72, RT	174
SUBTOTAL	504

PERIMETER EROSION BARRIER

STATION	FOOT
SMITH / KAUTZ RD	
9841+67.29 TO 9848+50, LT	685
9841+67.29 TO 9848+50, RT	729
9852+50 TO 9856+83.72, LT	384
9852+50 TO 9856+83.72, RT	368
SUBTOTAL	2,208

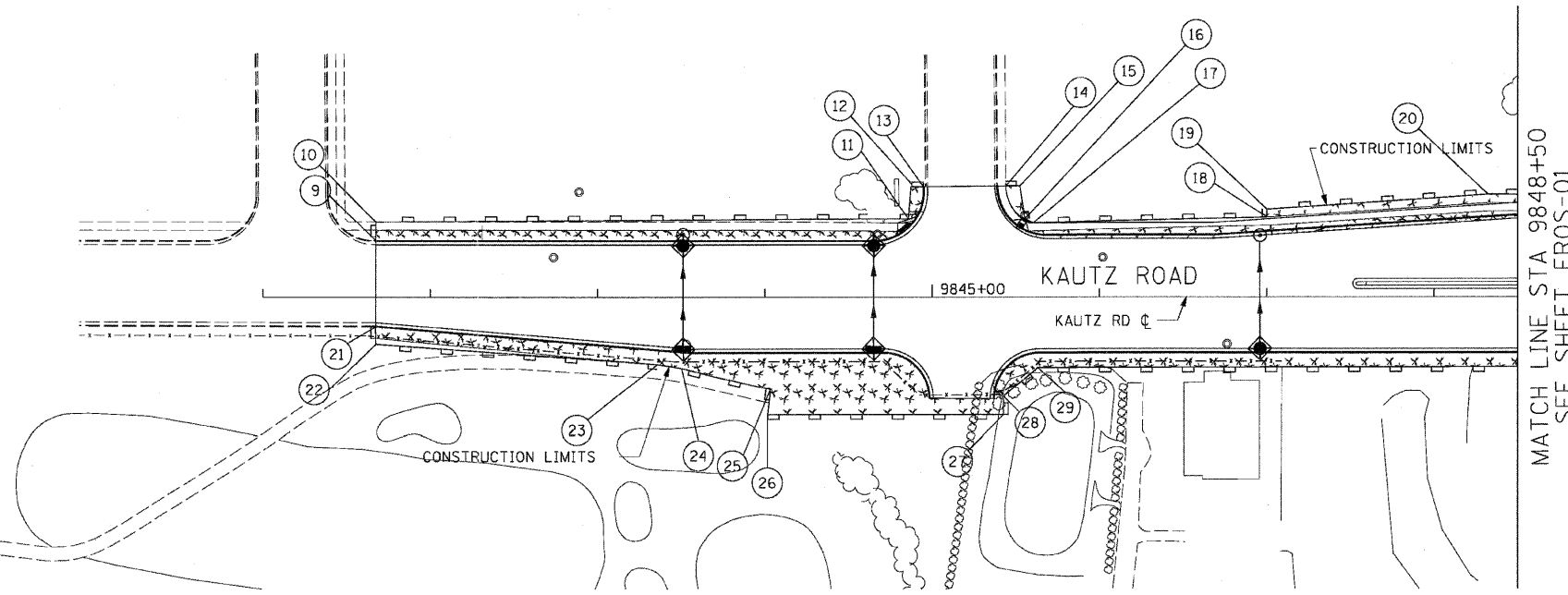
EROSION CONTROL LEGEND

	STAGE 1	STAGE 2
INLET FILTER		
PIPE PROTECTION		
TEMPORARY DITCH CHECKS		
PERIMETER EROSION BARRIER		
WETLAND PROTECTION FENCE (SPECIAL)		
AGGREGATE (EROSION CONTROL)		
TEMPORARY EROSION CONTROL SEEDING / MULCH METHOD 2		



PERIMETER BARRIER LOCATIONS

POINT	STATION	OFFSET
SMITH/KAUTZ RD		
1	9853+02.9	50.4' LT
2	9853+26.7	50.5' LT
3	9856+20.1	48.9' LT
4	9856+41.1	80.2' LT
5	9853+46.3	69.9' RT
6	9853+78.3	69.9' RT
7	9856+26.9	70.0' RT
8	9856+40.9	88.6' RT
9	9841+67.3	34.0' LT
10	9841+67.3	46.0' LT
11	9844+85.8	47.0' LT
12	9844+87.2	66.4' LT
13	9844+94.7	66.4' LT
14	9845+44.0	66.8' LT
15	9845+52.4	66.8' LT
16	9845+55.4	47.0' LT
17	9845+60.4	44.6' LT
18	9847+00.0	47.9' LT
19	9847+00.0	52.8' LT
20	9848+32.2	61.6' LT
21	9841+67.2	17.9' RT
22	9841+67.2	28.3' RT
23	9843+35.7	40.4' RT
24	9843+50.1	42.8' RT
25	9844+03.4	55.3' RT
26	9844+01.7	70.4' RT
27	9845+42.6	70.5' RT
28	9845+42.6	59.7' RT
29	9845+63.2	42.4' RT



REVISIONS	
NAME	DATE

ILLINOIS DEPARTMENT OF TRANSPORTATION
 F.A.P. ROUTE 307 (ILLINOIS ROUTE 64)

EROSION CONTROL PLAN
 SMITH / KAUTZ ROAD
 STA. 9841+67.29 TO STA. 9856+83

SCALE: VERT: NONE
 HORIZ: 1"=50'
 DATE: NOVEMBER 1, 2011

DRAWN BY: AFC
 CHECKED BY: NJH

EROS-10