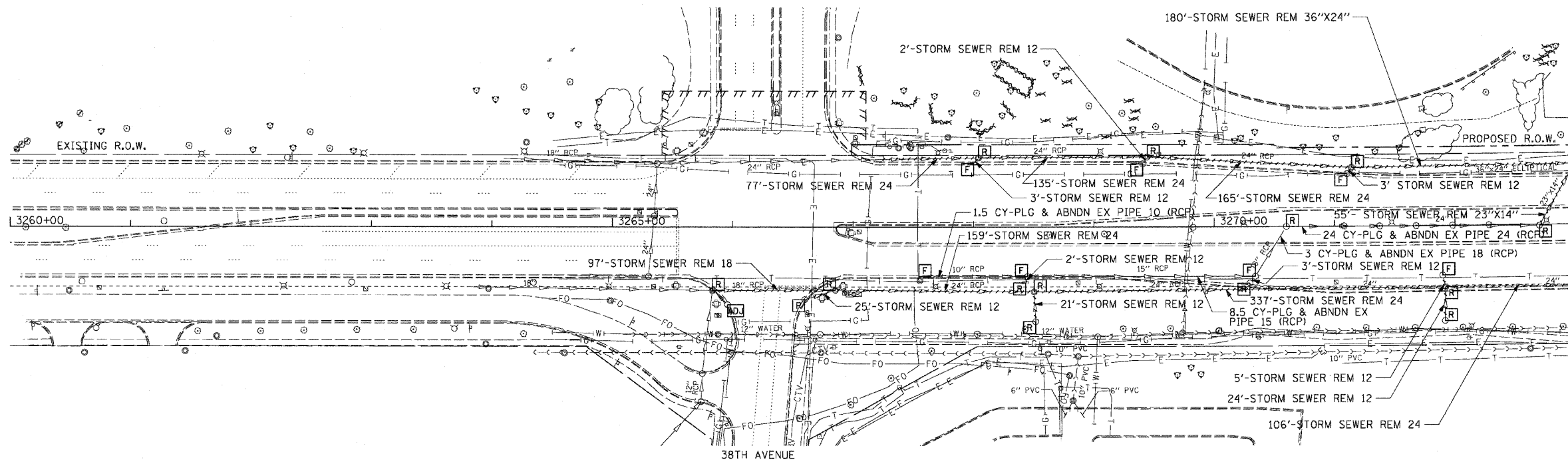


F.A.P. RTE.	SECTION	COUNTY	TOTAL SHEETS	SHEET NO.
307	130 R-2	DUPAGE, KANE	647	164
STA. 3260+00		TO STA. 3273+00		
FED. ROAD DIST. NO.		ILLINOIS FED. AID PROJECT		

62410

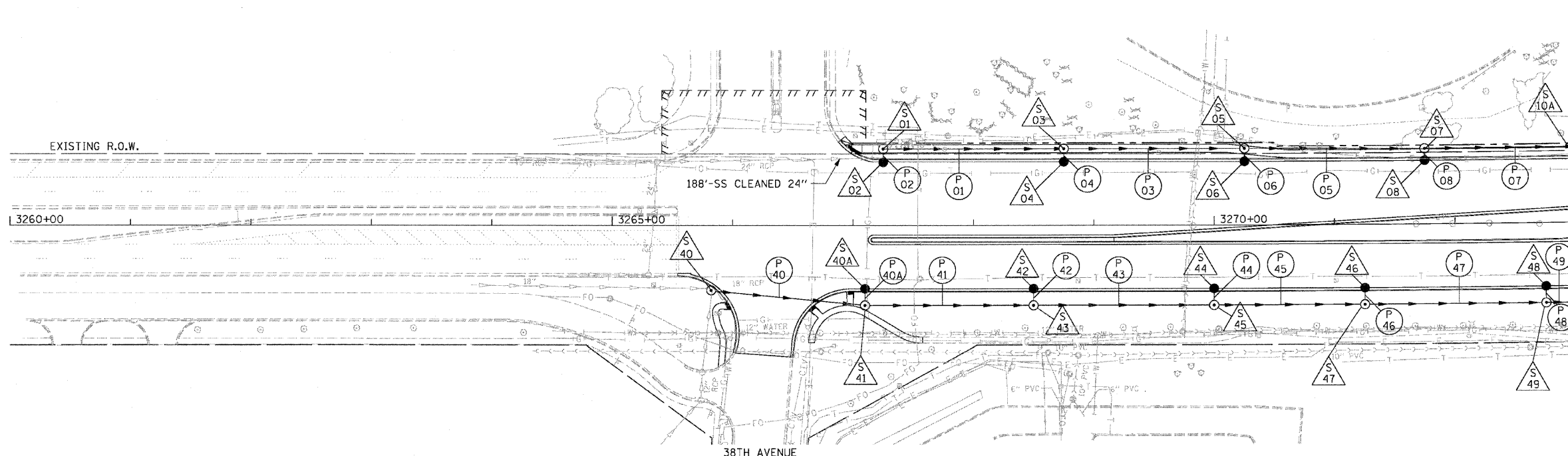


EXISTING CONDITIONS AND DRAINAGE REMOVALS

MATCH LINE STA 3273+00  
SEE SHEET DRN-2

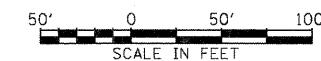
**NOTES:**

1. SEE DRAINAGE SCHEDULE FOR CULVERT, STRUCTURE, PIPE, AND UNDERDRAIN INFORMATION.
2. IN LOCATIONS, WHERE THE EXISTING DRAINAGE STRUCTURE IS TO BE FILLED, REMOVE THE TOP OF THE STRUCTURE TO THE BOTTOM OF THE PROPOSED AGGREGATE SUBGRADE.



PROPOSED DRAINAGE PLAN

MATCH LINE STA 3273+00  
SEE SHEET DRN-2



DRN-1

REVISIONS	
NAME	DATE

ILLINOIS DEPARTMENT OF TRANSPORTATION  
 F.A.P. ROUTE 307 (ILLINOIS ROUTE 64)

**DRAINAGE PLAN**  
 IL ROUTE 64  
 STA. 3260+00 TO STA. 3273+00

SCALE: VERT: NONE  
 HORIZ: 1" = 50'  
 DATE: NOVEMBER 1, 2011  
 DRAWN BY: AFC  
 CHECKED BY: EBY

