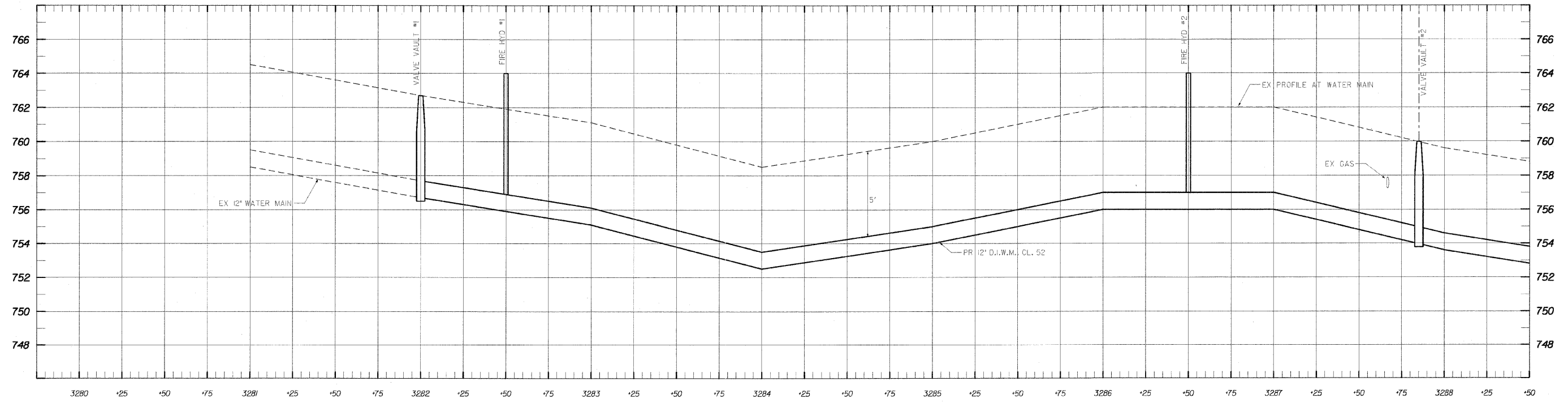
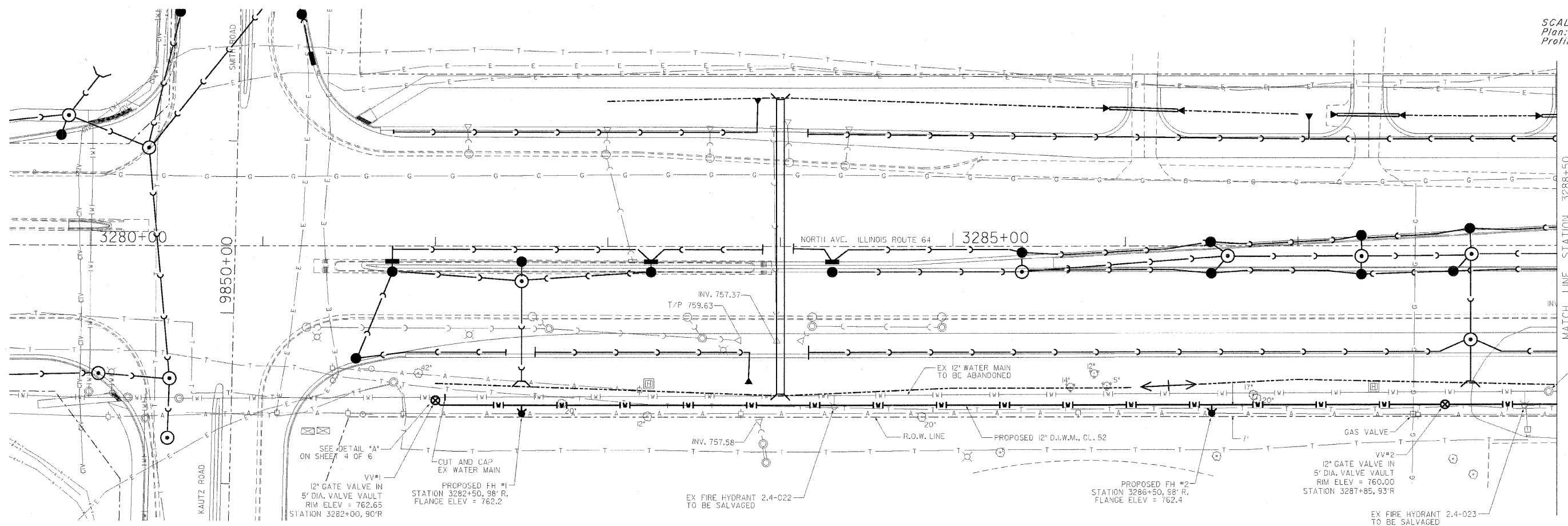
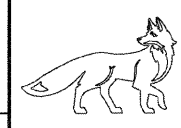


SCALE:
Plan: 1"=30'
Profile: Horz. 1"=30'
Vert. 1"=3'



NO.	REVISIONS	BY	DATE

PREPARED UNDER THE SUPERVISION OF:
JAMES J. BERNAHL
 062-041/33 P.E. NO. 11/30/2011 DATE
 DRAWN CHECKED



CITY OF ST. CHARLES
ENGINEERING DEPARTMENT
 2 EAST MAIN STREET, ST. CHARLES, ILLINOIS 60174 (630) 377-4486

PHEASANT RUN WATER MAIN REPLACEMENT
KAUTZ ROAD TO PHEASANT RUN ENTRANCE

PROJECT NO.
 DATE: JUNE 4, 2010
 SCALE: 1"=30'
 FILE: PHEASANT RUN WM-SHEET 11.DWG
SHEET 193 of 647