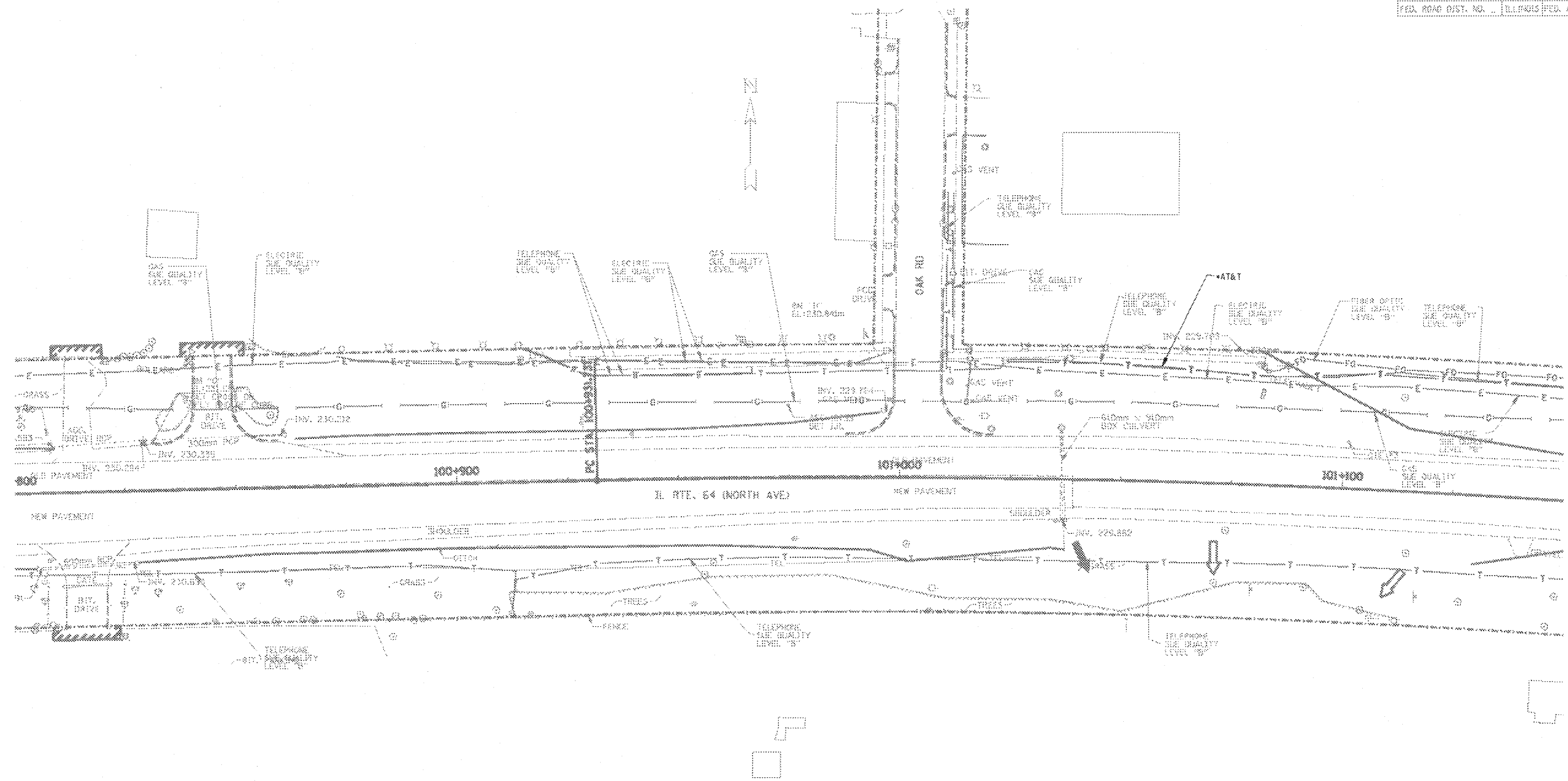


F.A.D. RTE.	SECTION	COUNTY	TOTAL SHEETS	SHEET NO.
64	3308-B	COOK	16	204
STA. 192+000		TO STA. 195+500		
FED. ROAD DIST. NO.		ILLINOIS FED. AID PROJECT		



— A — A —	OVERHEAD
— T — T —	TELEPHONE
— W — W —	WATER
— G — G —	GAS
— CTV — CTV — CTV	CABLE TELEVISION
— FO — FO — FO	FIBER OPTIC
— E — E —	ELECTRIC

CARDNO TBE AND IDOT REQUESTED UTILITY AS-BUILTS FROM THE CITY OF WEST CHICAGO BUT HAVE NOT RECEIVED THEM AS OF 11/05/10.

TBE GROUP, INC.
 CIVIL ENGINEERING * TRANSPORTATION * ENVIRONMENTAL
 * PLANNING * UTILITY ENGINEERING/LOCATING
 SOUTHERN REGION: FL, GA, SC, NC
 NORTHERN REGION: IL, IN, MI, OH, MD, NJ, NY
 PA, VA, CANADA
 WESTERN REGION: AZ, NV, NM, TX, CA, OR, UT, WA

WO : IL09500126 & IL09500135 & IL09510410
 SUE Quality Level "A" : Test Holes
 SUE Quality Level "B" : Designating



205 W. WACKER DRIVE
 SUITE 1020
 CHICAGO, IL 60606
 (312) 704-1970

Utilities shown on these plans as depicted in the legend have been investigated by TBE Group, Inc in accordance with SUE Industry Standards. All other information shown has been provided to TBE Group, Inc by others. Additional utilities labeled with utility owner investigated by TBE 8/18/10 - 11/05/10 captured by A. J.

REVISIONS		ILLINOIS DEPARTMENT OF TRANSPORTATION
NAME	DATE	
NEW UTILITIES IN COLOR	11/05/10	IL RTE 64 (NORTH AVE) WEST OF IL RT 69 TO KAUTZ RD.

SCALE : 1/500
 DATE - SOL "B" 7/5/02
 DRAWN BY - JAC
 CHECKED BY - RLC