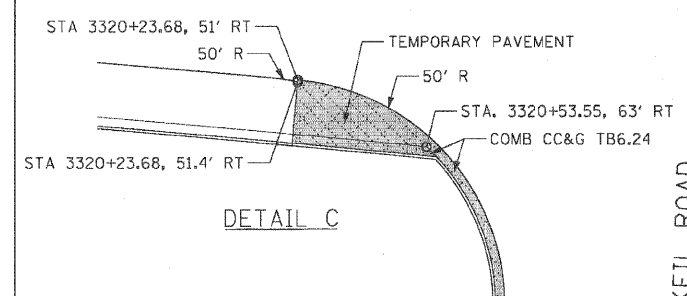
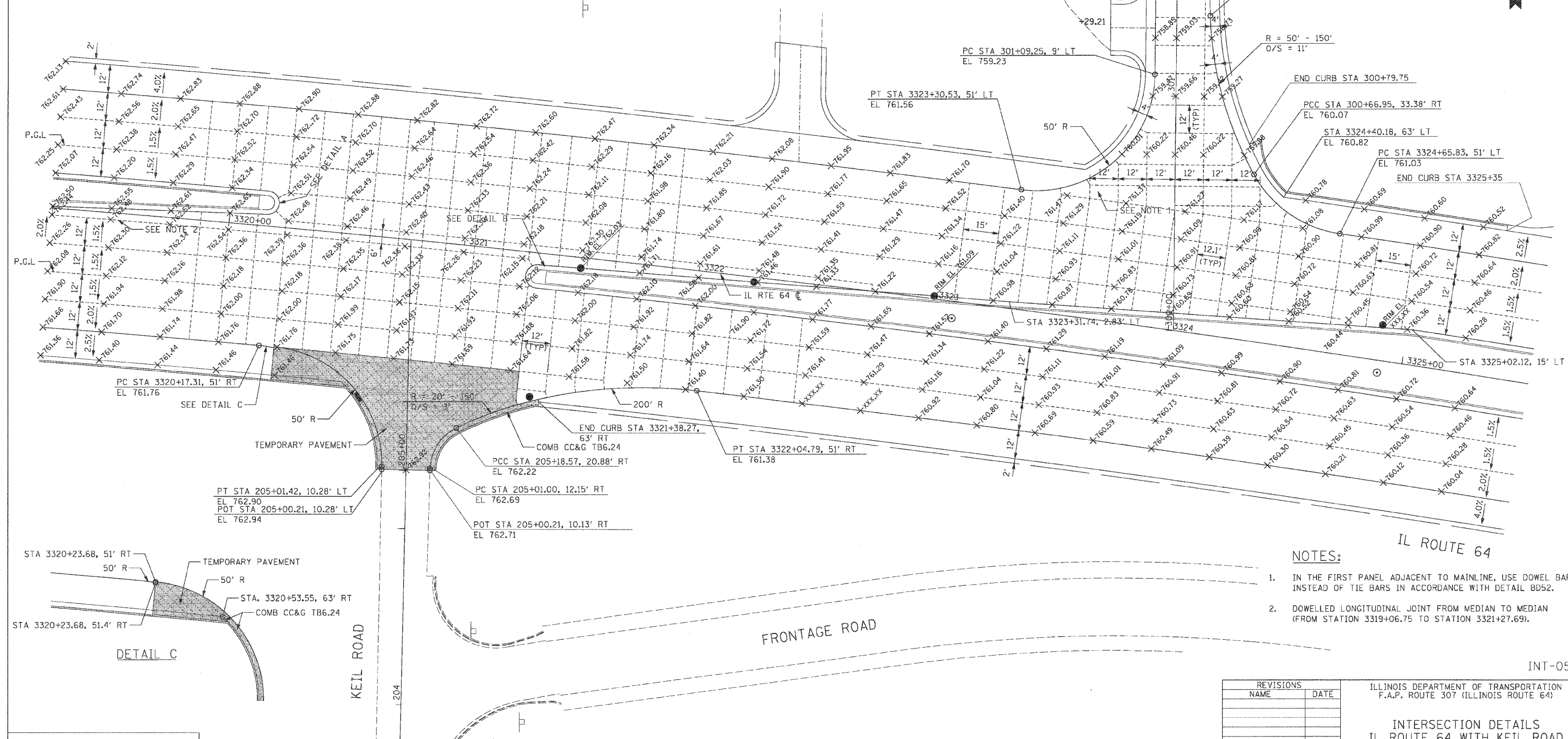
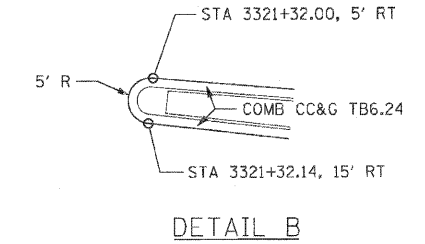
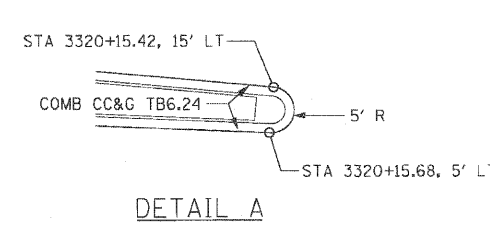
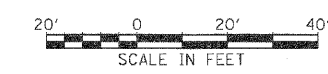


F.A.P. NO.	SECTION	COUNTY	TOTAL SHEETS	SHEET NO.
307	130 R-2	DUPAGE, KANE	647	243
STA.	TO STA.			
FED. ROAD DIST. NO.		ILLINOIS FED. AID PROJECT		

62410



- NOTES:**
1. IN THE FIRST PANEL ADJACENT TO MAINLINE, USE DOWEL BARS INSTEAD OF TIE BARS IN ACCORDANCE WITH DETAIL BD52.
 2. DOWELLED LONGITUDINAL JOINT FROM MEDIAN TO MEDIAN (FROM STATION 3319+06.75 TO STATION 3321+27.69).



REVISIONS	
NAME	DATE

ILLINOIS DEPARTMENT OF TRANSPORTATION
 F.A.P. ROUTE 307 (ILLINOIS ROUTE 64)

INTERSECTION DETAILS
 IL ROUTE 64 WITH KEIL ROAD
 AND ELM ROAD

SCALE: VERT: NONE
 HORIZ: 1"=20'
 DATE: NOVEMBER 1, 2011

DRAWN BY: AFC
 CHECKED BY: NJH

INT-05