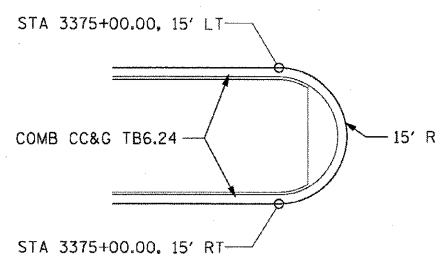
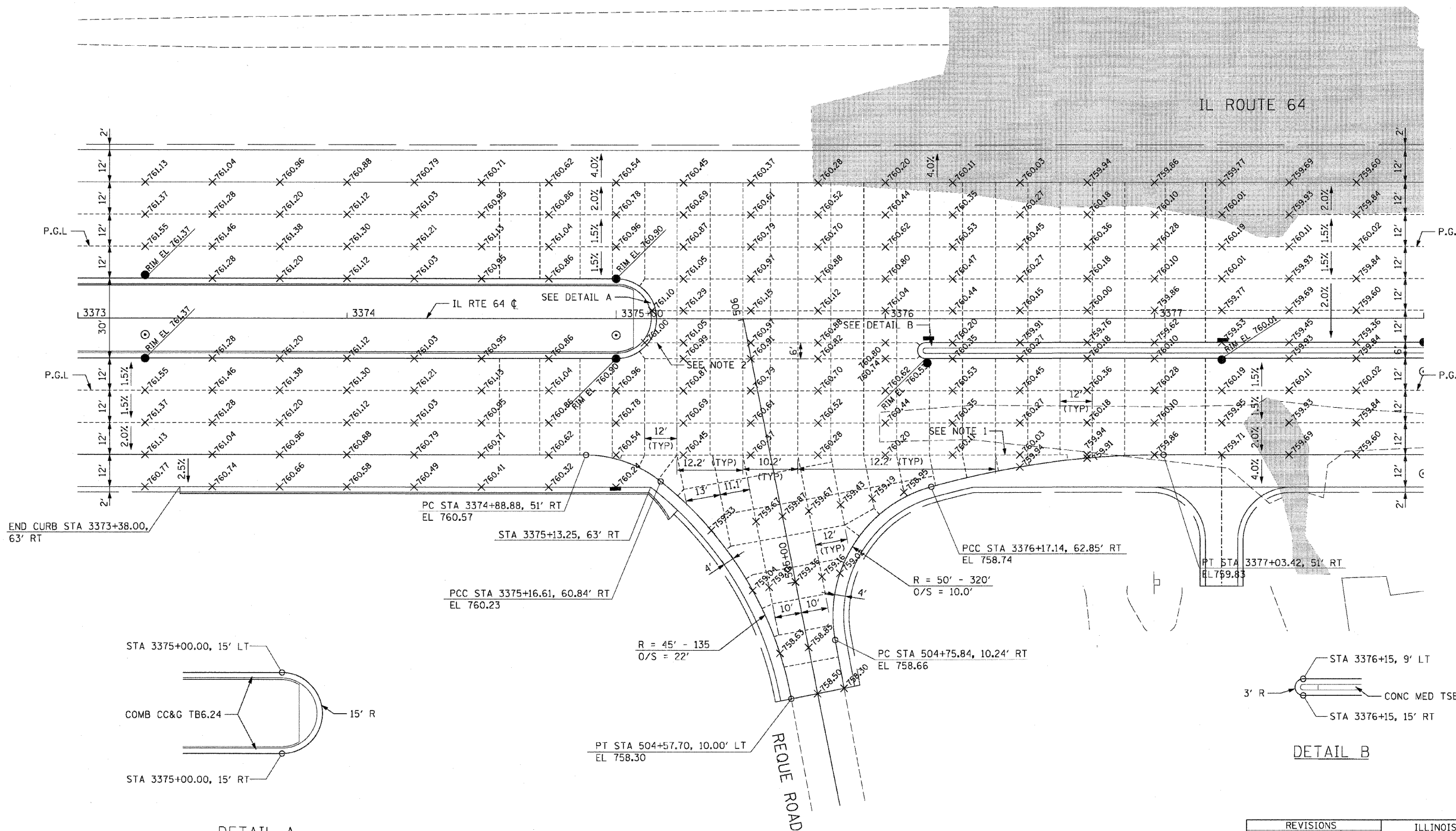


F.A.P. RTE.	SECTION	COUNTY	TOTAL SHEETS	SHEET NO.
307	130 R-2	DUPAGE,KANE	647	246
STA.	TO STA.			
FED. ROAD DIST. NO.	ILLINOIS	FED. AID PROJECT		

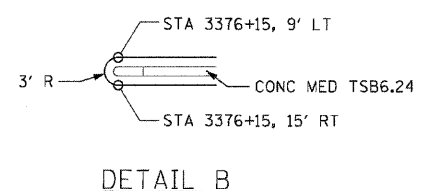
62410

NOTES:

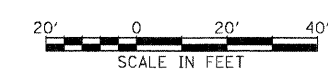
- PAVEMENT SEPARATION JOINT IN ACCORDANCE WITH BD52.
- DOWELLED LONGITUDINAL JOINT FROM MEDIAN TO MEDIAN (FROM STATION 3375+12.00 TO STATION 3376+12.80).



DETAIL A



DETAIL B



REVISIONS	
NAME	DATE

ILLINOIS DEPARTMENT OF TRANSPORTATION
 F.A.P. ROUTE 307 (ILLINOIS ROUTE 64)

INTERSECTION DETAILS
 IL ROUTE 64 AND REQUE ROAD

SCALE: VERT: NONE
 HORIZ: 1"=20'
 DATE: NOVEMBER 1, 2011

DRAWN BY: AFC
 CHECKED BY: NJH

INT-08