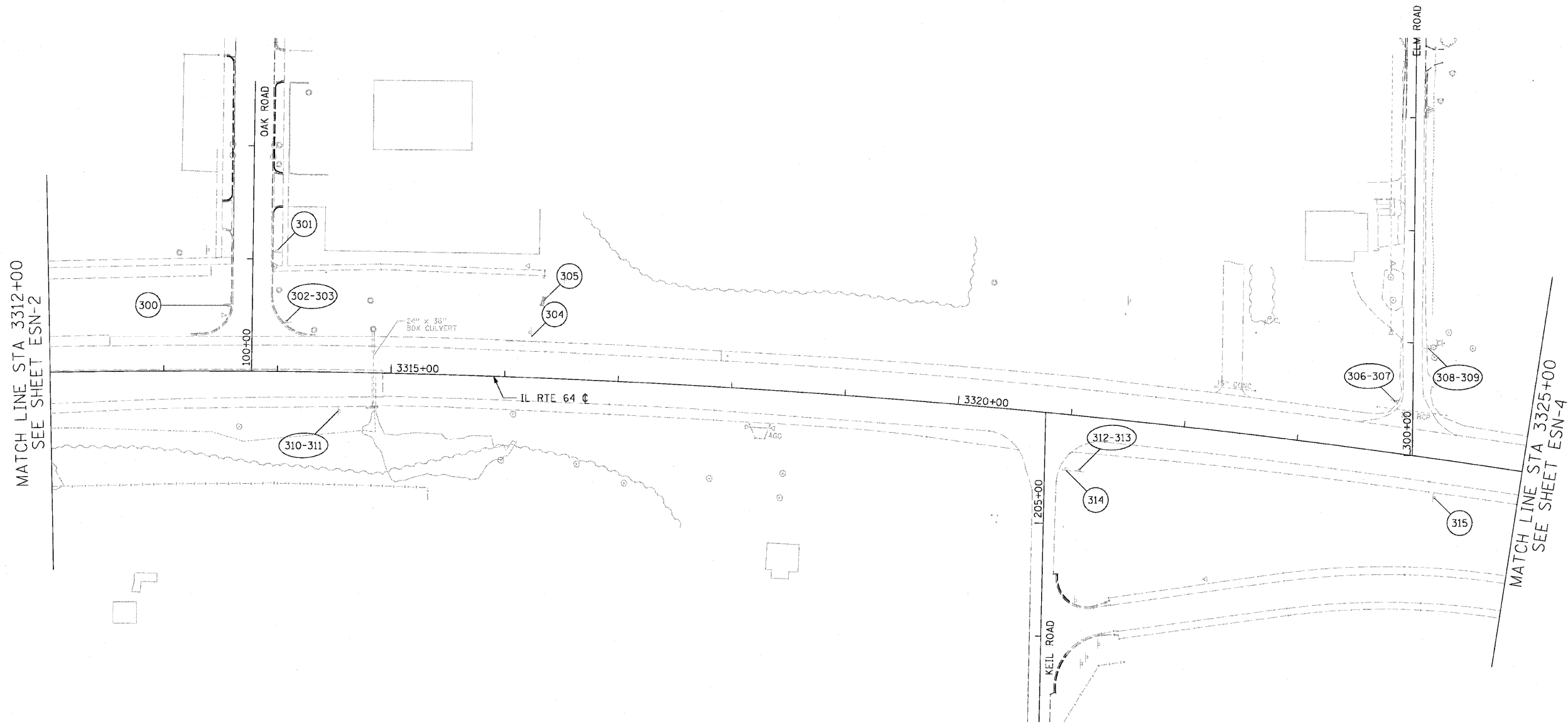


F.A.P. RTE.	SECTION	COUNTY	TOTAL SHEETS	SHEET NO.
307	130 R-2	DUPAGE, KANE	647	280
STA. 3312+00		TO STA. 3325+00		
FED. ROAD DIST. NO.		ILLINOIS FED. AID PROJECT		

62410



MATCH LINE STA 3312+00
SEE SHEET ESN-2

MATCH LINE STA 3325+00
SEE SHEET ESN-4

NOTES:

1. SHEET CALLOUTS ARE DETAILED IN THE EXISTING SIGN SCHEDULE. SEE SHEET ESNS-2
2. THE "WELCOME TO ST CHARLES" AND THE "WELCOME TO WEST CHICAGO" SIGNS SHALL BE REMOVED AND RE-ERECTED BY THE RESPECTIVE MUNICIPALITY AND SHALL NOT BE PAID FOR.



REVISIONS	
NAME	DATE

ILLINOIS DEPARTMENT OF TRANSPORTATION
 F.A.P. ROUTE 307 (ILLINOIS ROUTE 64)
 EXISTING SIGNING PLAN
 IL ROUTE 64
 STA. 3312+00 TO STA. 3325+00

SCALE: VERT: NONE
 HORIZ: 1"=50'
 DATE: MAY 13, 2011

DRAWN BY: JWM
 CHECKED BY: RMG

ESN-3