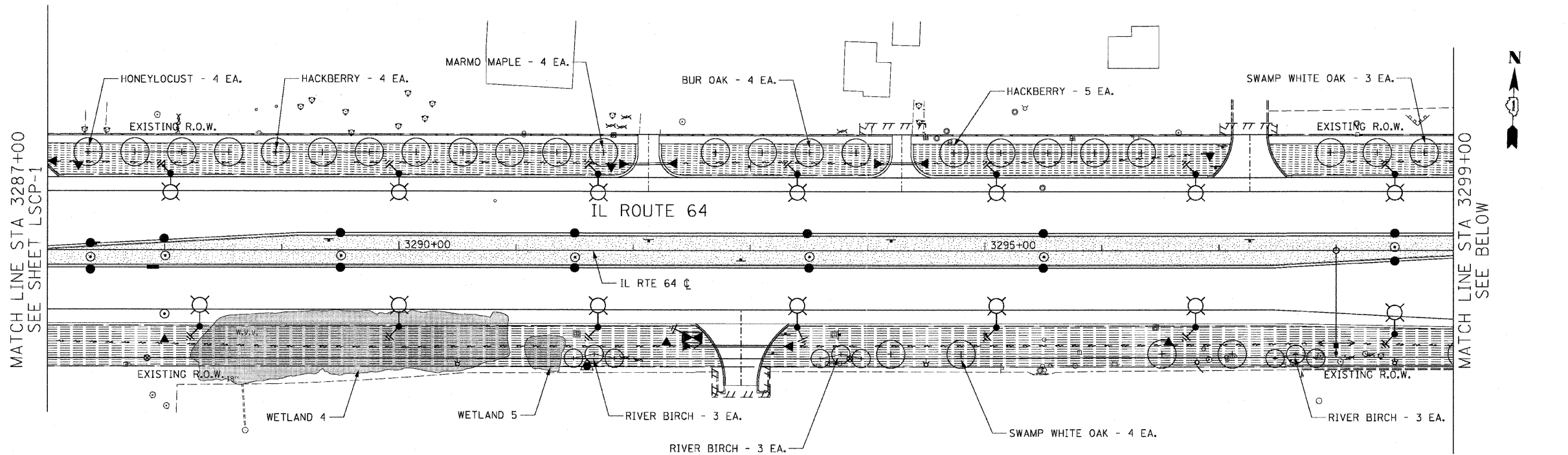
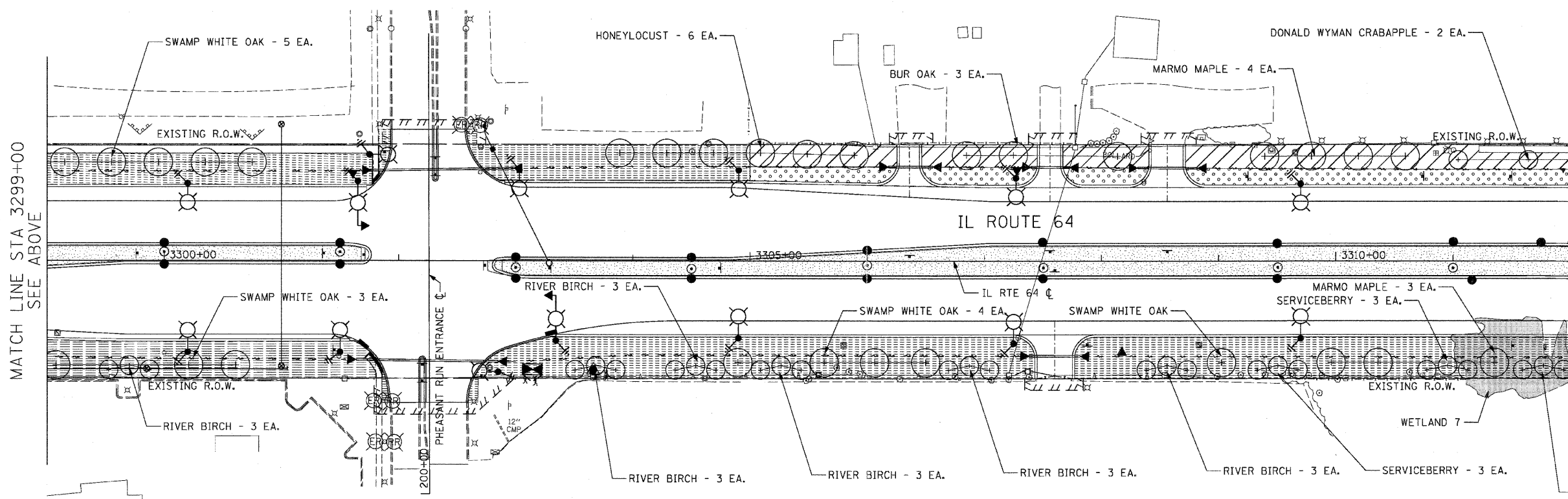


F.A.P. RTE.	SECTION	COUNTY	TOTAL SHEETS	SHEET NO.
307	130 R-2	DUPAGE, KANE	647	311
STA. 3287+00		TO STA. 3312+00		
FED. ROAD DIST. NO.		ILLINOIS FED. AID PROJECT		

62410



- LEGEND:**
- FURNISHING AND PLACING TOPSOIL, 4" AND SEEDING CLASS 2A EROSION CONTROL BLANKET
  - FURNISHING AND PLACING TOPSOIL, 4" AND SODDING, SALT TOLERANT EROSION CONTROL BLANKET
  - FURNISHING AND PLACING TOPSOIL, 24" AND SEEDING CLASS 2A EROSION CONTROL BLANKET
  - COMPOST, 2" SEEDING CLASS 4 (PRAIRIE GRASS) EROSION CONTROL BLANKET
  - COMPOST, 2" SEEDING CLASS 4B (MODIFIED) WETLAND MIX EROSION CONTROL BLANKET
  - SELECTIVE MOWING STAKE WITH SIGN



PHEASANT RUN ENTRANCE



REVISIONS	
NAME	DATE
S. LIPKIE	06/11

ILLINOIS DEPARTMENT OF TRANSPORTATION  
 F.A.P. ROUTE 307 (ILLINOIS ROUTE 64)

**LANDSCAPING PLAN**  
 IL ROUTE 64  
 STA. 3287+00 TO STA. 3312+00

SCALE: VERT: NONE  
 HORIZ: 1"=50'  
 DATE: MAY 13, 2011

DRAWN BY: RMG  
 CHECKED BY: JWM

LSCP-2