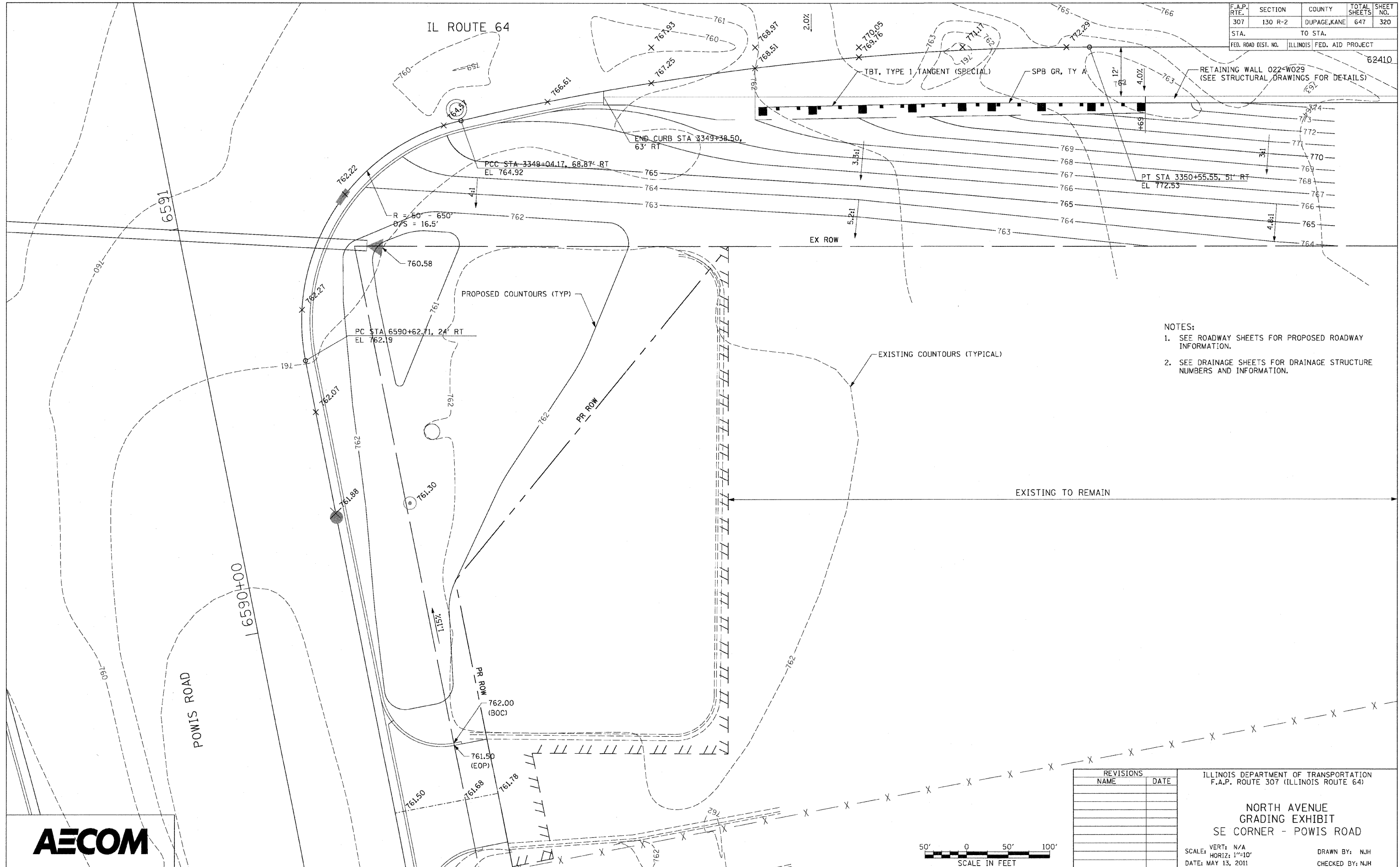


F.A.P. RTE.	SECTION	COUNTY	TOTAL SHEETS	SHEET NO.
307	130 R-2	DUPAGE, KANE	647	320
STA.		TO STA.		
FED. ROAD DIST. NO.		ILLINOIS FED. AID PROJECT		



- NOTES:
1. SEE ROADWAY SHEETS FOR PROPOSED ROADWAY INFORMATION.
  2. SEE DRAINAGE SHEETS FOR DRAINAGE STRUCTURE NUMBERS AND INFORMATION.

REVISIONS	NAME	DATE

ILLINOIS DEPARTMENT OF TRANSPORTATION  
 F.A.P. ROUTE 307 (ILLINOIS ROUTE 64)

**NORTH AVENUE  
 GRADING EXHIBIT  
 SE CORNER - POWIS ROAD**

SCALE: VERT: N/A  
 HORIZ: 1"=10'  
 DATE: MAY 13, 2011

DRAWN BY: NJH  
 CHECKED BY: NJH

