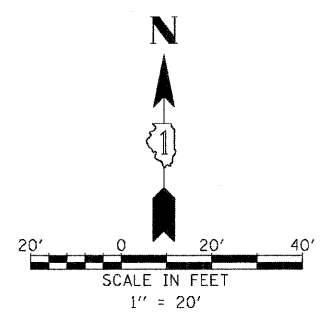
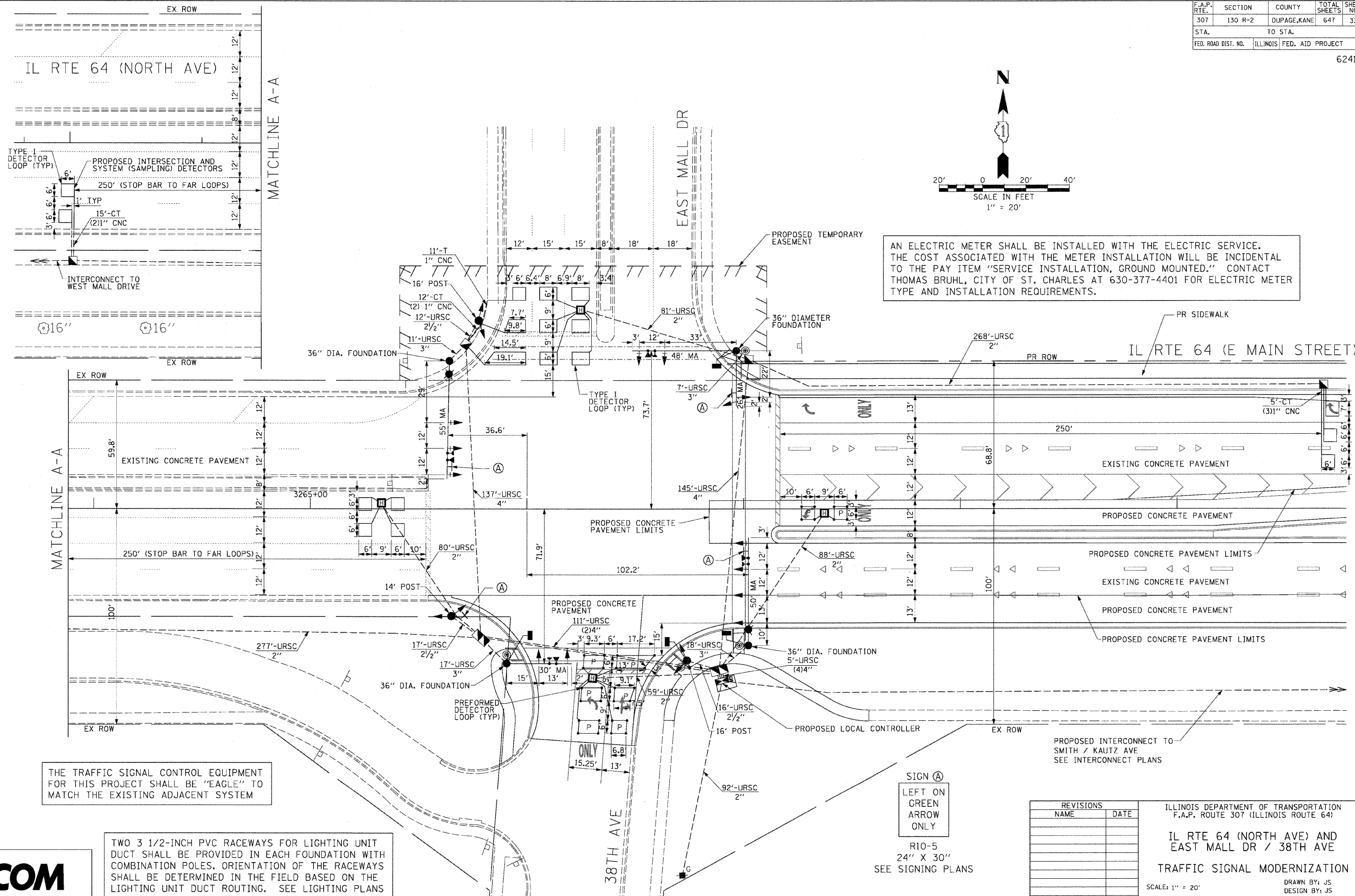


| | | | | |
|---------------------|---------|---------------------------|--------------|-----------|
| F.A.P. RTE. | SECTION | COUNTY | TOTAL SHEETS | SHEET NO. |
| 307 | 130 R-2 | DUPAGE, KANE | 647 | 335 |
| STA. | | TO STA. | | |
| FED. ROAD DIST. NO. | | ILLINOIS FED. AID PROJECT | | |

62410



AN ELECTRIC METER SHALL BE INSTALLED WITH THE ELECTRIC SERVICE. THE COST ASSOCIATED WITH THE METER INSTALLATION WILL BE INCIDENTAL TO THE PAY ITEM "SERVICE INSTALLATION, GROUND MOUNTED." CONTACT THOMAS BRUHL, CITY OF ST. CHARLES AT 630-377-4401 FOR ELECTRIC METER TYPE AND INSTALLATION REQUIREMENTS.

THE TRAFFIC SIGNAL CONTROL EQUIPMENT FOR THIS PROJECT SHALL BE "EAGLE" TO MATCH THE EXISTING ADJACENT SYSTEM

TWO 3 1/2-INCH PVC RACEWAYS FOR LIGHTING UNIT DUCT SHALL BE PROVIDED IN EACH FOUNDATION WITH COMBINATION POLES. ORIENTATION OF THE RACEWAYS SHALL BE DETERMINED IN THE FIELD BASED ON THE LIGHTING UNIT DUCT ROUTING. SEE LIGHTING PLANS

SIGN (A)
 LEFT ON GREEN
 ARROW
 ONLY
 R10-5
 24" X 30"
 SEE SIGNING PLANS

| REVISIONS | |
|-----------|------|
| NAME | DATE |
| | |
| | |
| | |
| | |
| | |
| | |

ILLINOIS DEPARTMENT OF TRANSPORTATION
 F.A.P. ROUTE 307 (ILLINOIS ROUTE 64)
 IL RTE 64 (NORTH AVE) AND
 EAST MALL DR / 38TH AVE
 TRAFFIC SIGNAL MODERNIZATION
 SCALE: 1" = 20'
 DATE: NOVEMBER 1, 2011
 DRAWN BY: JS
 DESIGN BY: JS
 CHECKED BY: WP

