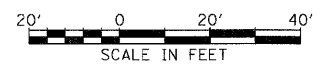
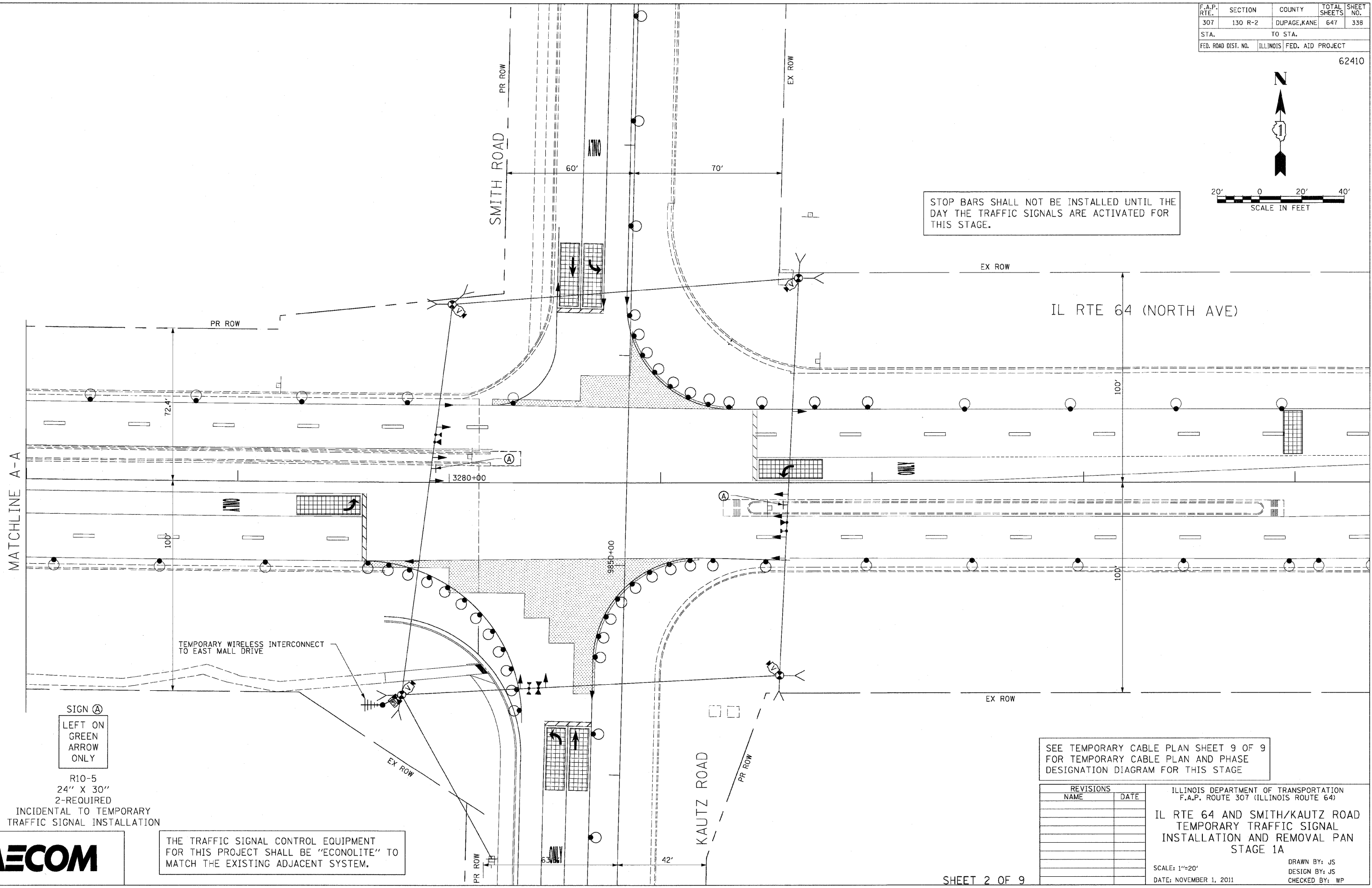


F.A.P. RTE.	SECTION	COUNTY	TOTAL SHEETS	SHEET NO.
307	130 R-2	DUPAGE, KANE	647	338
STA.		TO STA.		
FED. ROAD DIST. NO.		ILLINOIS FED. AID PROJECT		

62410



STOP BARS SHALL NOT BE INSTALLED UNTIL THE DAY THE TRAFFIC SIGNALS ARE ACTIVATED FOR THIS STAGE.



MATCHLINE A-A

SIGN (A)
 LEFT ON GREEN ARROW ONLY

R10-5
 24" X 30"
 2-REQUIRED
 INCIDENTAL TO TEMPORARY TRAFFIC SIGNAL INSTALLATION

THE TRAFFIC SIGNAL CONTROL EQUIPMENT FOR THIS PROJECT SHALL BE "ECONOLITE" TO MATCH THE EXISTING ADJACENT SYSTEM.

SEE TEMPORARY CABLE PLAN SHEET 9 OF 9 FOR TEMPORARY CABLE PLAN AND PHASE DESIGNATION DIAGRAM FOR THIS STAGE

REVISIONS	
NAME	DATE

ILLINOIS DEPARTMENT OF TRANSPORTATION
 F.A.P. ROUTE 307 (ILLINOIS ROUTE 64)
 IL RTE 64 AND SMITH/KAUTZ ROAD
 TEMPORARY TRAFFIC SIGNAL
 INSTALLATION AND REMOVAL PLAN
 STAGE 1A

SCALE: 1"=20'
 DATE: NOVEMBER 1, 2011
 DRAWN BY: JS
 DESIGN BY: JS
 CHECKED BY: WP

