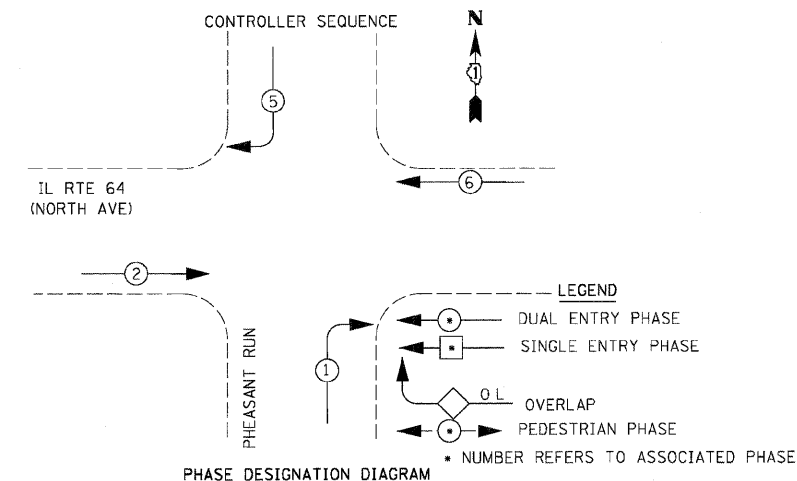
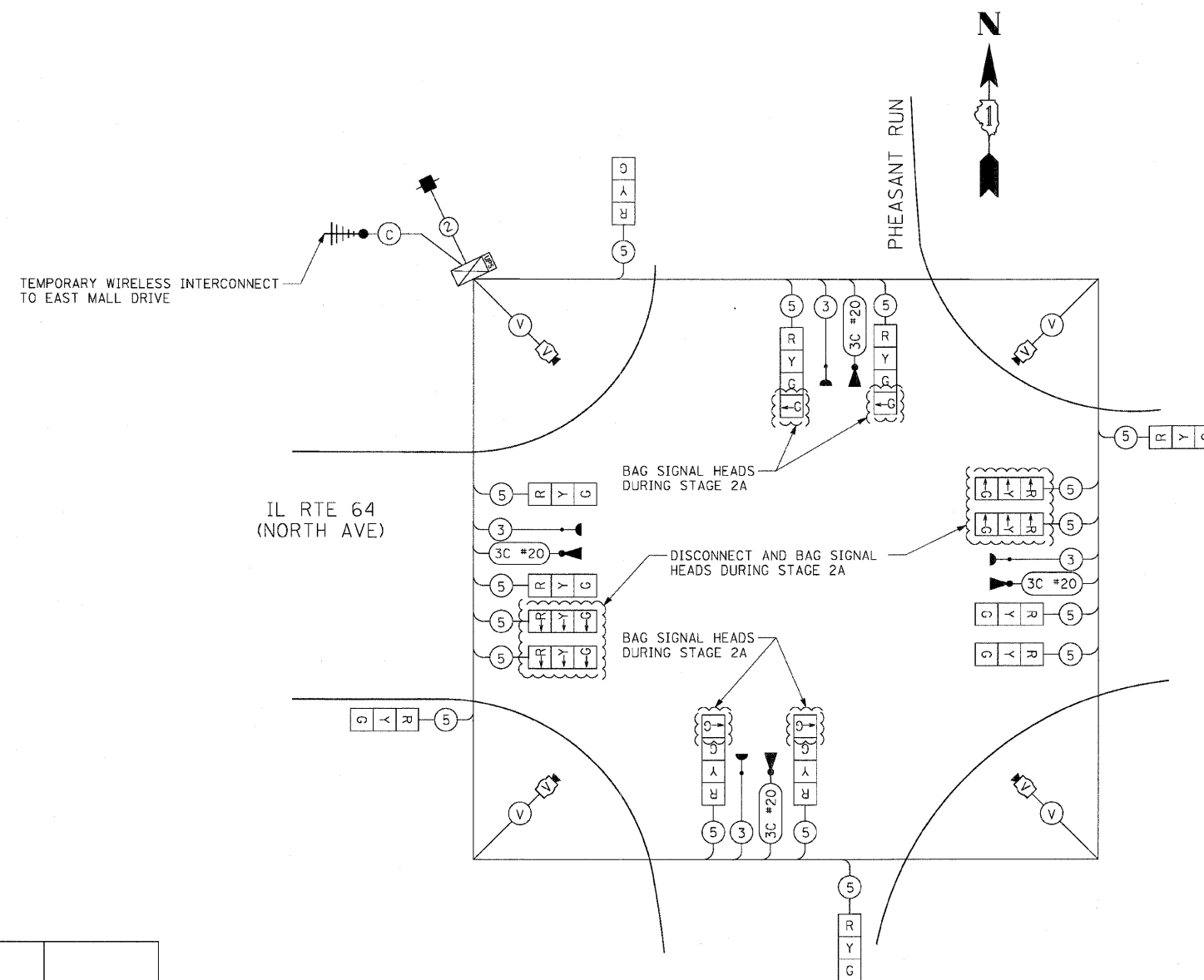
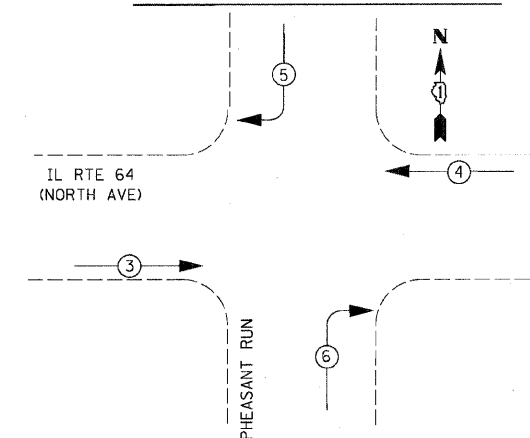


F.A.P. RTE.	SECTION	COUNTY	TOTAL SHEETS	SHEET NO.
307	130 R-2	DUPAGE, KANE	647	358
STA.	TO STA.			
FED. ROAD DIST. NO.	ILLINOIS FED. AID PROJECT			

62410



EMERGENCY VEHICLE PREEMPTION SEQUENCE



PROPOSED EMERGENCY VEHICLE PREEMPTORS				
EMERGENCY VEHICLE PREEMPTOR	3	4	5	6
MOVEMENT	→	←	↙	↘

CABLE PLAN
 NOT TO SCALE

I.D.O.T TRAFFIC SIGNAL INSTALLATION ELECTRICAL SERVICE REQUIREMENTS					TOTAL WATTAGE
TYPE	NO. LAMPS	WATTAGE		% OPERATION	
		INCAND.	LED		
SIGNAL (RED)	12	17	50		102.00
(YELLOW)	12	25	25		75.00
(GREEN)	12	15	25		45.00
ARROW	4	12	10		4.80
PED. SIGNAL	0		25	100	0.00
CONTROLLER	1		100	100	100.00
ILLUM. SIGN	0		25	5	0.00
VIDEO SYSTEM	1	150		100	150.00
FLASHER				50	--
TOTAL =					476.80

ENERGY COSTS TO:

ILLINOIS DEPARTMENT OF TRANSPORTATION
 201 WEST CENTER COURT
 SCHAUMBURG, ILLINOIS 60196-1096

ENERGY SUPPLY CONTACT: THOMAS BRUHL
 PHONE: (630) 377-4401
 COMPANY: ST. CHARLES ELECTRICAL DEPARTMENT

REVISIONS	
NAME	DATE

ILLINOIS DEPARTMENT OF TRANSPORTATION
 IL RTE 64 & PHEASANT RUN
 TEMPORARY CABLE PLAN &
 TEMPORARY PHASE DESIGNATION
 DIAGRAM & SCHEDULE OF QUANTITIES
 STAGE 2A
 SCALE: NONE
 DATE: NOVEMBER 1, 2011
 DRAWN BY: JS
 DESIGN BY: JS
 CHECKED BY: WP