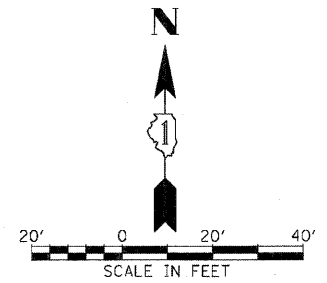


F.A.P. RTE.	SECTION	COUNTY	TOTAL SHEETS	SHEET NO.
307	130 R-2	DUPAGE, KANE	647	362
STA.	TO STA.			
FED. ROAD DIST. NO. ILLINOIS FED. AID PROJECT				

62410



CONSTRUCTION NOTES:

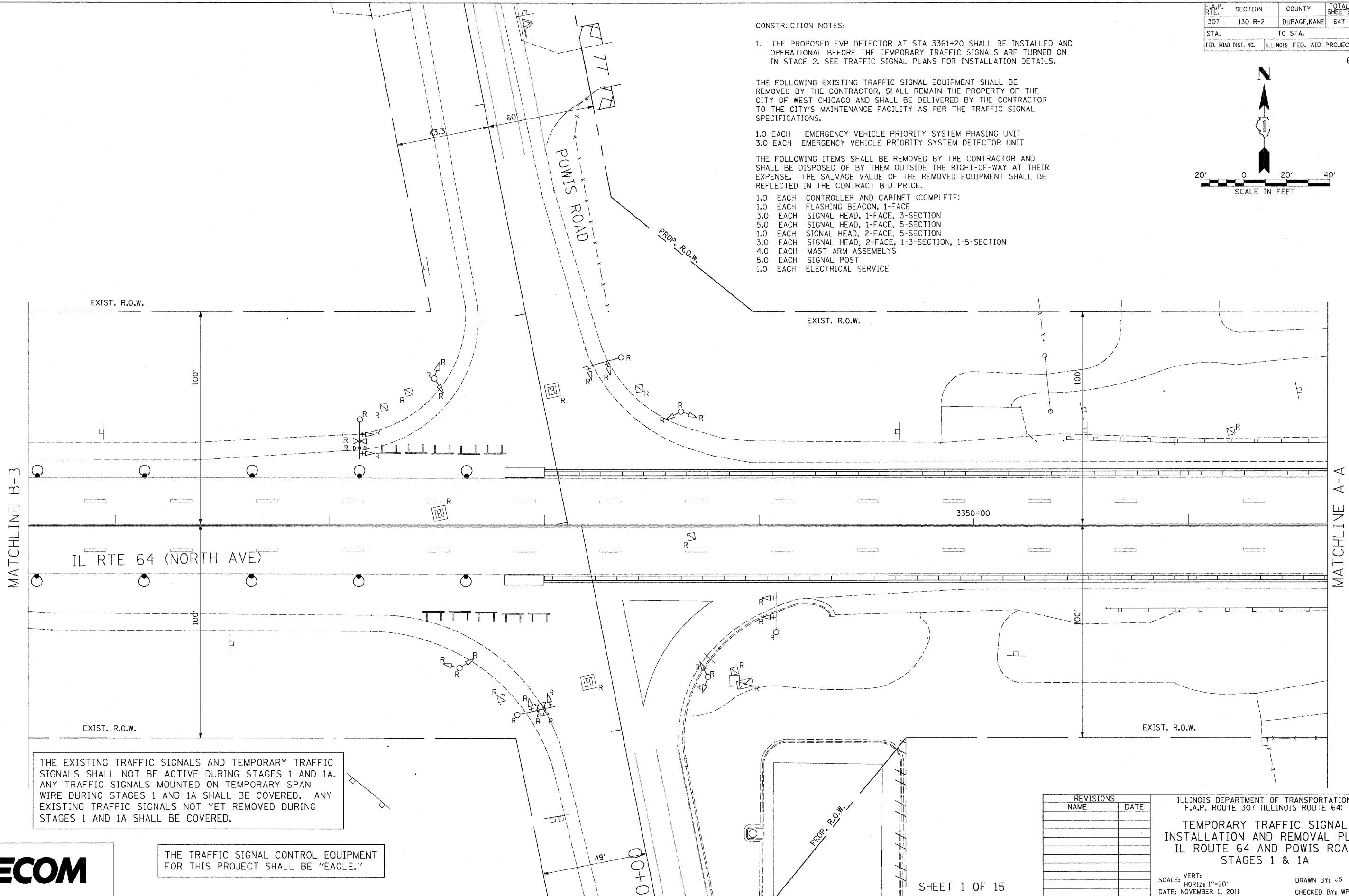
1. THE PROPOSED EVP DETECTOR AT STA 3361+20 SHALL BE INSTALLED AND OPERATIONAL BEFORE THE TEMPORARY TRAFFIC SIGNALS ARE TURNED ON IN STAGE 2. SEE TRAFFIC SIGNAL PLANS FOR INSTALLATION DETAILS.

THE FOLLOWING EXISTING TRAFFIC SIGNAL EQUIPMENT SHALL BE REMOVED BY THE CONTRACTOR, SHALL REMAIN THE PROPERTY OF THE CITY OF WEST CHICAGO AND SHALL BE DELIVERED BY THE CONTRACTOR TO THE CITY'S MAINTENANCE FACILITY AS PER THE TRAFFIC SIGNAL SPECIFICATIONS.

- 1.0 EACH EMERGENCY VEHICLE PRIORITY SYSTEM PHASING UNIT
- 3.0 EACH EMERGENCY VEHICLE PRIORITY SYSTEM DETECTOR UNIT

THE FOLLOWING ITEMS SHALL BE REMOVED BY THE CONTRACTOR AND SHALL BE DISPOSED OF BY THEM OUTSIDE THE RIGHT-OF-WAY AT THEIR EXPENSE. THE SALVAGE VALUE OF THE REMOVED EQUIPMENT SHALL BE REFLECTED IN THE CONTRACT BID PRICE.

- 1.0 EACH CONTROLLER AND CABINET (COMPLETE)
- 1.0 EACH FLASHING BEACON, 1-FACE
- 3.0 EACH SIGNAL HEAD, 1-FACE, 3-SECTION
- 5.0 EACH SIGNAL HEAD, 1-FACE, 5-SECTION
- 1.0 EACH SIGNAL HEAD, 2-FACE, 5-SECTION
- 3.0 EACH SIGNAL HEAD, 2-FACE, 1-3-SECTION, 1-5-SECTION
- 4.0 EACH MAST ARM ASSEMBLYS
- 5.0 EACH SIGNAL POST
- 1.0 EACH ELECTRICAL SERVICE



THE EXISTING TRAFFIC SIGNALS AND TEMPORARY TRAFFIC SIGNALS SHALL NOT BE ACTIVE DURING STAGES 1 AND 1A. ANY TRAFFIC SIGNALS MOUNTED ON TEMPORARY SPAN WIRE DURING STAGES 1 AND 1A SHALL BE COVERED. ANY EXISTING TRAFFIC SIGNALS NOT YET REMOVED DURING STAGES 1 AND 1A SHALL BE COVERED.

THE TRAFFIC SIGNAL CONTROL EQUIPMENT FOR THIS PROJECT SHALL BE "EAGLE."



REVISIONS	
NAME	DATE

ILLINOIS DEPARTMENT OF TRANSPORTATION
 F.A.P. ROUTE 307 (ILLINOIS ROUTE 64)
**TEMPORARY TRAFFIC SIGNAL
 INSTALLATION AND REMOVAL PLAN
 IL ROUTE 64 AND POWIS ROAD
 STAGES 1 & 1A**
 SCALE: VERT: 1"=20'
 HORIZ: 1"=20'
 DATE: NOVEMBER 1, 2011
 DRAWN BY: JS
 CHECKED BY: WP