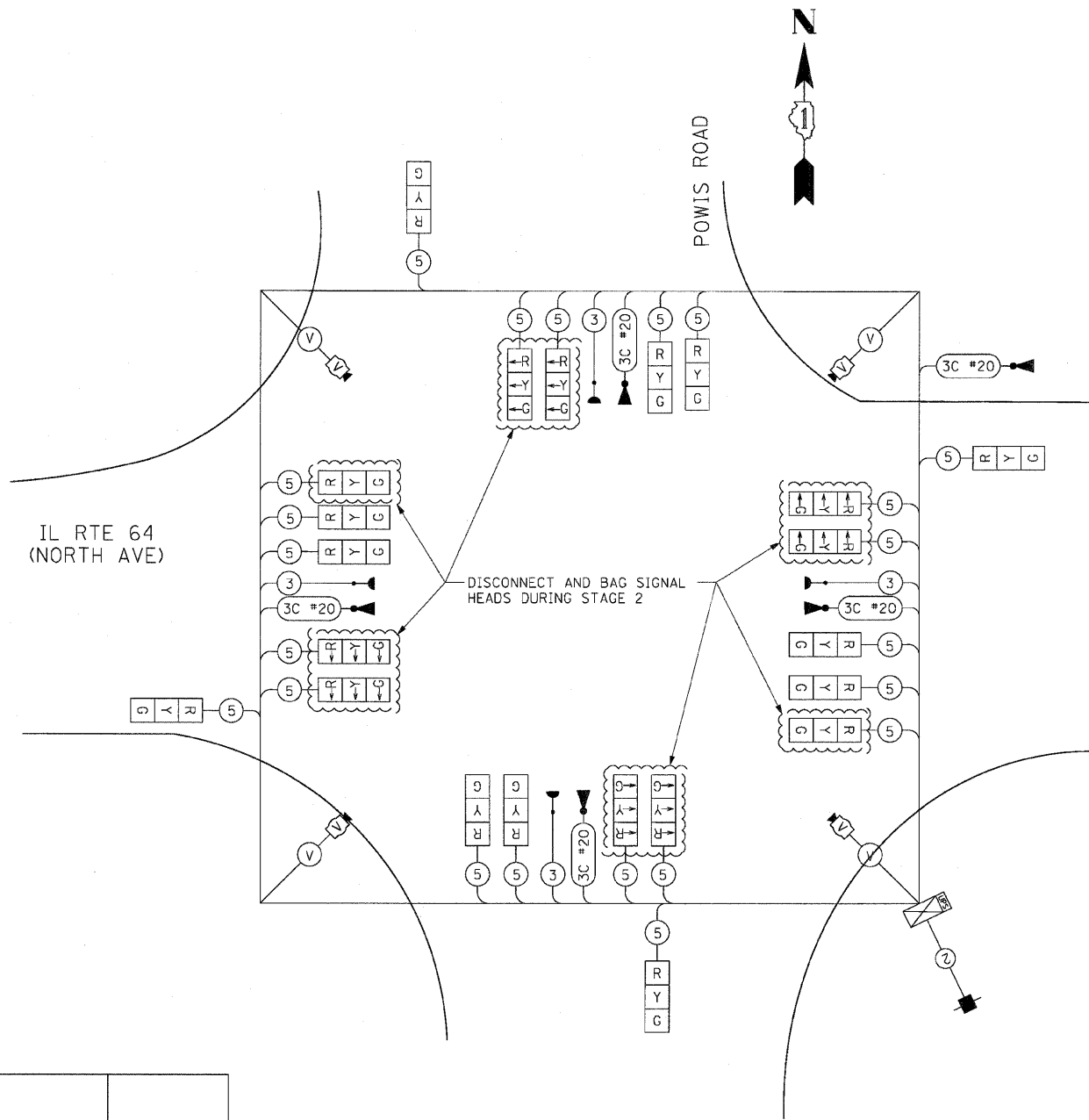
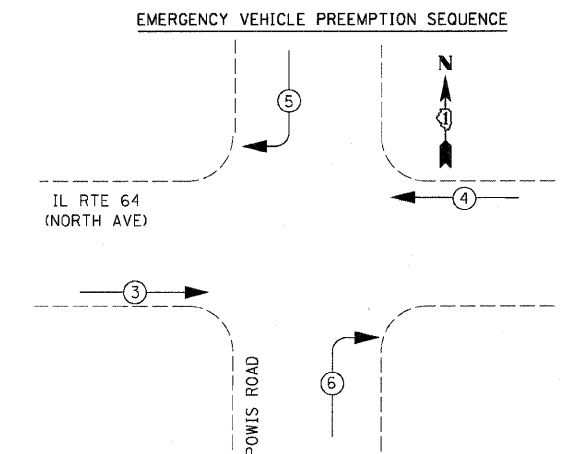
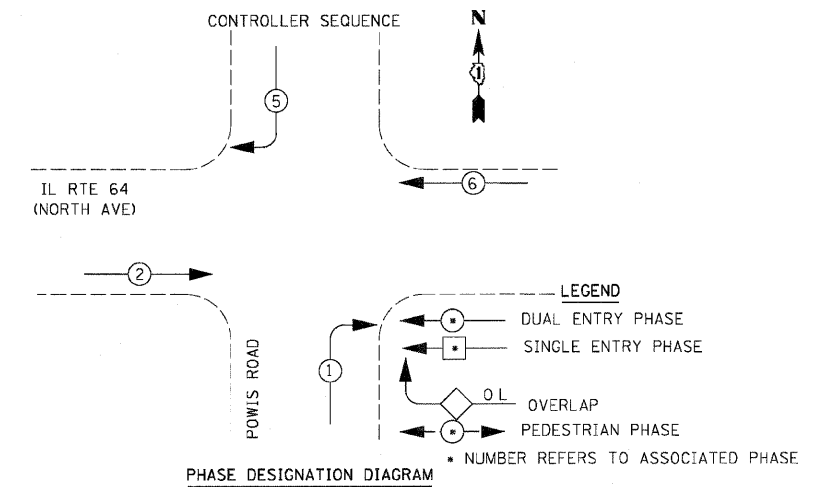


F.A.P. RTE.	SECTION	COUNTY	TOTAL SHEETS	SHEET NO.
307	130 R-2	DUPAGE,KANE	647	368
STA.		TO STA.		
FED. ROAD DIST. NO.		ILLINOIS FED. AID PROJECT		

62410



**CABLE PLAN**  
 NOT TO SCALE



PROPOSED EMERGENCY VEHICLE PREEMPTORS				
EMERGENCY VEHICLE PREEMPTOR	3	4	5	6
MOVEMENT	→	←	↙	↘

I.D.O.T TRAFFIC SIGNAL INSTALLATION ELECTRICAL SERVICE REQUIREMENTS					TOTAL WATTAGE
TYPE	NO. LAMPS	WATTAGE		% OPERATION	
		INCAND.	LED		
SIGNAL (RED)	12	17		50	102.00
(YELLOW)	12		25	25	75.00
(GREEN)	12		15	25	45.00
ARROW	0		12	10	0.00
PED. SIGNAL	0		25	100	0.00
CONTROLLER	1		100	100	100.00
ILLUM. SIGN	0		25	5	0.00
VIDEO SYSTEM	1	150		100	150.00
FLASHER	0		25	50	0.00
TOTAL =					472.00

ENERGY COSTS TO:  
 ILLINOIS DEPARTMENT OF TRANSPORTATION  
 201 WEST CENTER COURT  
 SCHAUMBURG, ILLINOIS 60196-1096

ENERGY SUPPLY CONTACT: MARK GLOECKLE  
 PHONE: (630) 691-4529  
 COMPANY: COMED

REVISIONS	
NAME	DATE

ILLINOIS DEPARTMENT OF TRANSPORTATION  
 IL RTE 64 & POWIS ROAD  
 TEMPORARY CABLE PLAN &  
 TEMPORARY PHASE DESIGNATION  
 DIAGRAM & SCHEDULE OF QUANTITIES  
 STAGE 2

SCALE: NONE  
 DATE: NOVEMBER 1, 2011

DRAWN BY: JS  
 DESIGN BY: JS  
 CHECKED BY: WP