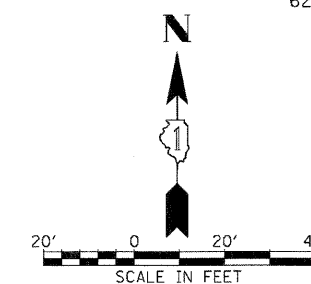


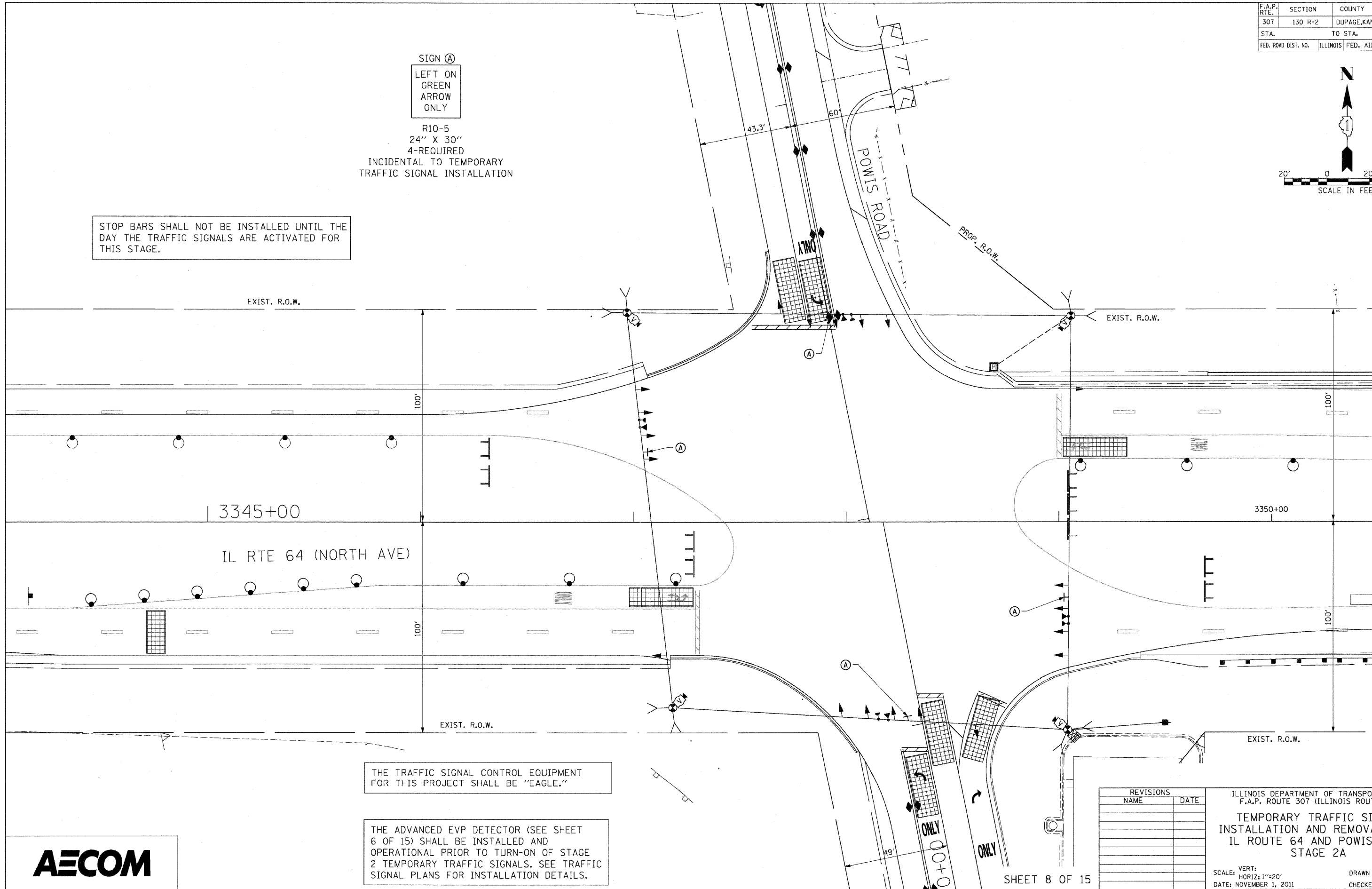
F.A.P. RTE.	SECTION	COUNTY	TOTAL SHEETS	SHEET NO.
307	130 R-2	DUPAGE, KANE	647	369
STA.	TO STA.			
FED. ROAD DIST. NO.	ILLINOIS FED. AID PROJECT			

62410



SIGN (A)
 LEFT ON GREEN ARROW ONLY
 R10-5
 24" X 30"
 4-REQUIRED
 INCIDENTAL TO TEMPORARY TRAFFIC SIGNAL INSTALLATION

STOP BARS SHALL NOT BE INSTALLED UNTIL THE DAY THE TRAFFIC SIGNALS ARE ACTIVATED FOR THIS STAGE.



THE TRAFFIC SIGNAL CONTROL EQUIPMENT FOR THIS PROJECT SHALL BE "EAGLE."

THE ADVANCED EVP DETECTOR (SEE SHEET 6 OF 15) SHALL BE INSTALLED AND OPERATIONAL PRIOR TO TURN-ON OF STAGE 2 TEMPORARY TRAFFIC SIGNALS. SEE TRAFFIC SIGNAL PLANS FOR INSTALLATION DETAILS.



REVISIONS	
NAME	DATE

ILLINOIS DEPARTMENT OF TRANSPORTATION
 F.A.P. ROUTE 307 (ILLINOIS ROUTE 64)
 TEMPORARY TRAFFIC SIGNAL
 INSTALLATION AND REMOVAL PLAN
 IL ROUTE 64 AND POWIS ROAD
 STAGE 2A
 SCALE: VERT: 1"=20'
 HORIZ: 1"=20'
 DATE: NOVEMBER 1, 2011
 DRAWN BY: JS
 CHECKED BY: WP