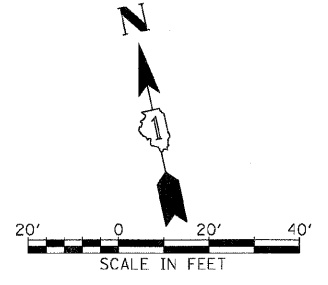


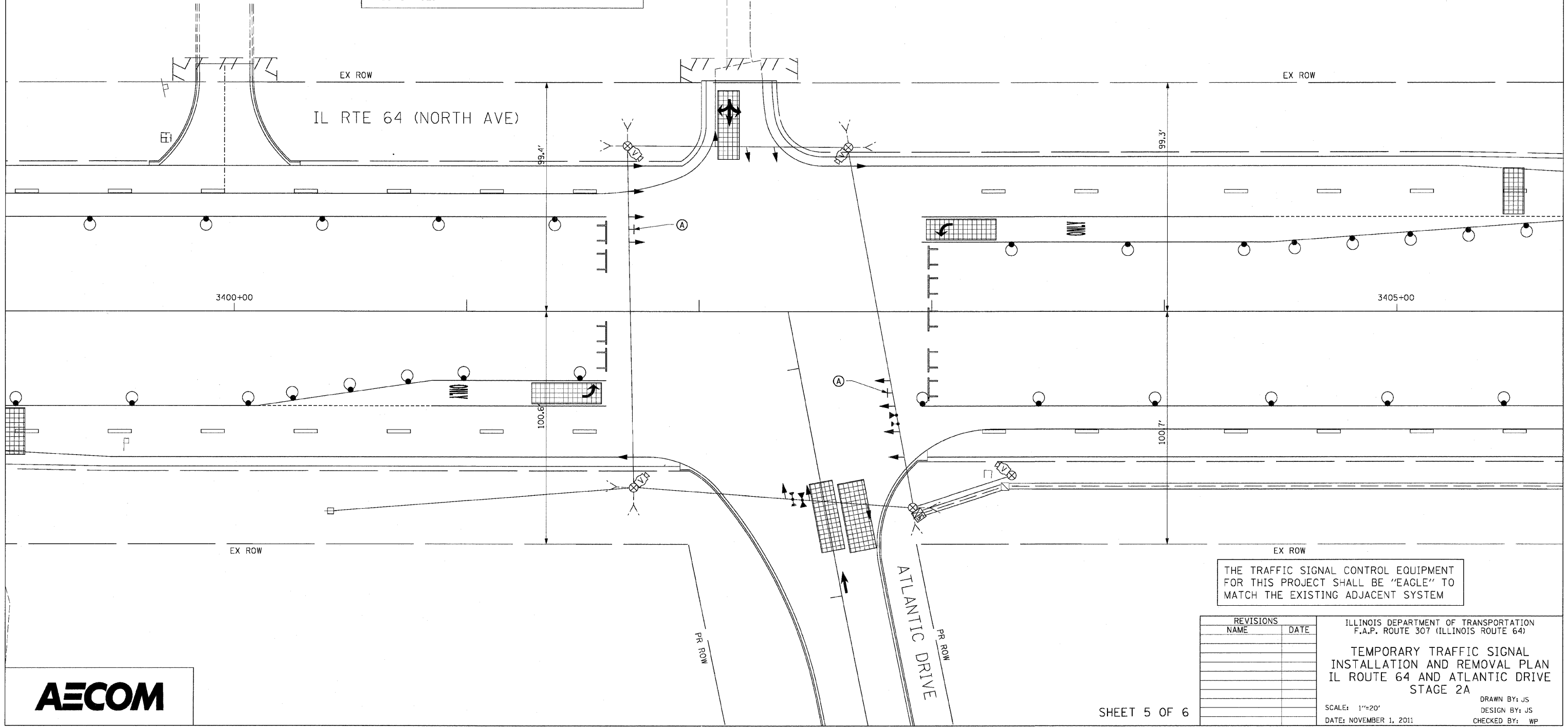
F.A.P. RTE.	SECTION	COUNTY	TOTAL SHEETS	SHEET NO.
307	130 R-2	DUPAGE, KANE	647	381
STA.	TO STA.			
FED. ROAD DIST. NO.	ILLINOIS	FED. AID PROJECT		

62410

SIGN (A)
 LEFT ON GREEN ARROW ONLY
 R10-5
 24" X 30"
 2-REQUIRED
 INCIDENTAL TO TEMPORARY TRAFFIC SIGNAL INSTALLATION



STOP BARS SHALL NOT BE INSTALLED UNTIL THE DAY THE TRAFFIC SIGNALS ARE ACTIVATED FOR THIS STAGE.



THE TRAFFIC SIGNAL CONTROL EQUIPMENT FOR THIS PROJECT SHALL BE "EAGLE" TO MATCH THE EXISTING ADJACENT SYSTEM

REVISIONS	
NAME	DATE

ILLINOIS DEPARTMENT OF TRANSPORTATION
 F.A.P. ROUTE 307 (ILLINOIS ROUTE 64)
 TEMPORARY TRAFFIC SIGNAL INSTALLATION AND REMOVAL PLAN
 IL ROUTE 64 AND ATLANTIC DRIVE
 STAGE 2A
 SCALE: 1"=20'
 DATE: NOVEMBER 1, 2011
 DRAWN BY: JS
 DESIGN BY: JS
 CHECKED BY: WP

