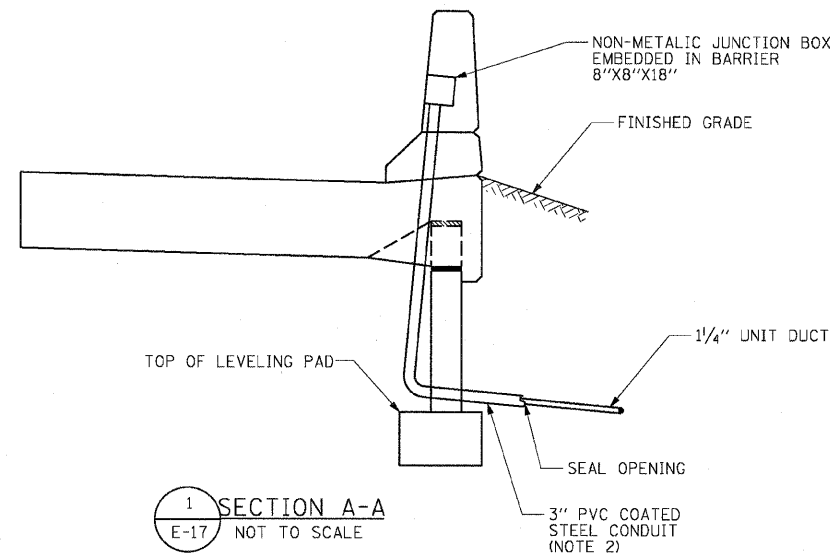


F.A.P. RTE.	SECTION	COUNTY	TOTAL SHEETS	SHEET NO.
307	130 R-2	DUPAGE, KANE	647	431
STA.		TO STA.		
FED. ROAD DIST. NO.	ILLINOIS	FED. AID PROJECT		

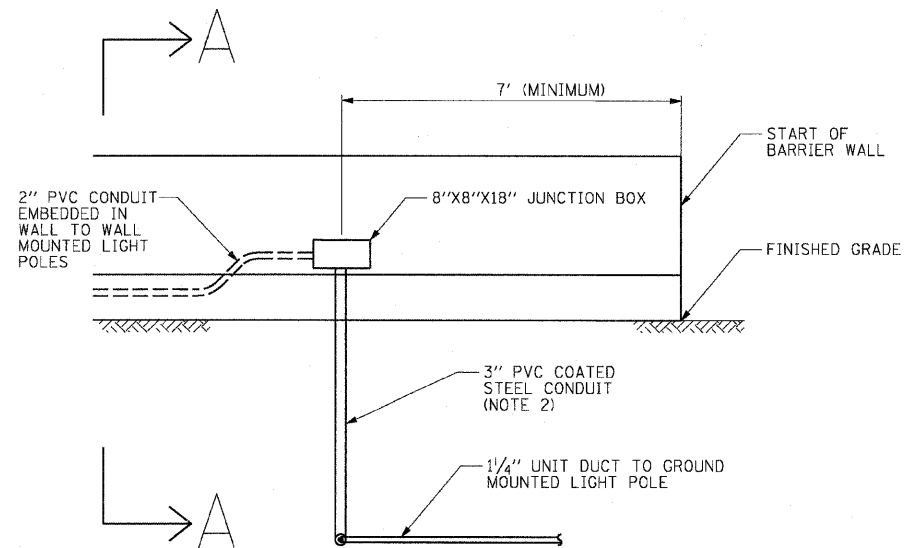
62410

NOTES:

- SEE SHEET E-01 FOR ELECTRICAL SYMBOLS, CALL-OUT SAMPLES, ABBREVIATIONS AND GENERAL NOTES.
- THE 3" COATED CONDUIT SLEEVE SHALL NOT BE MEASURED FOR PAYMENT BUT SHALL BE INCLUDED IN THE COST OF EACH JUNCTION BOX, EMBEDDED IN STRUCTURE, 18"X8"X8"
- THE CONTRACTOR SHALL REMOVE THE DUCT FROM A SUFFICIENT LENGTH OF CABLE TO REACH FROM THE EMBEDDED JUNCTION BOX TO THE FIRST WALL MOUNTED LIGHT POLE. THIS WORK SHALL BE MEASURED AND PAID AS UNIT DUCT, 600V, 3-1/C NO. 4, 1/C NO. 6 GROUND (EPR-TYPE RHW) 1/4" POLYETHYLENE.



1 SECTION A-A
 E-17 NOT TO SCALE



2 JUNCTION BOX EMBEDDED IN BARRIER WALL
 E-17 NOT TO SCALE

E-17



REVISIONS	
NAME	DATE

ILLINOIS DEPARTMENT OF TRANSPORTATION
 F.A.P. ROUTE 307 (ILLINOIS ROUTE 64)

**EMBEDDED JUNCTION BOX
 DETAILS**

SCALE: NONE
 DATE: MAY 13, 2011

DRAWN BY: TCL
 CHECKED BY: JPC