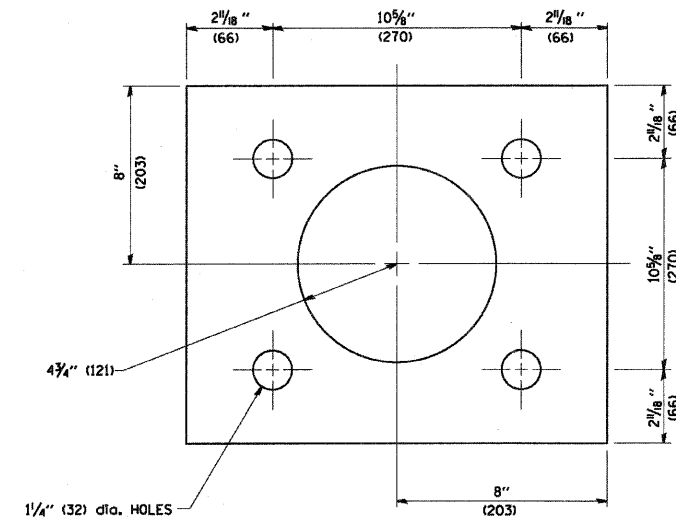
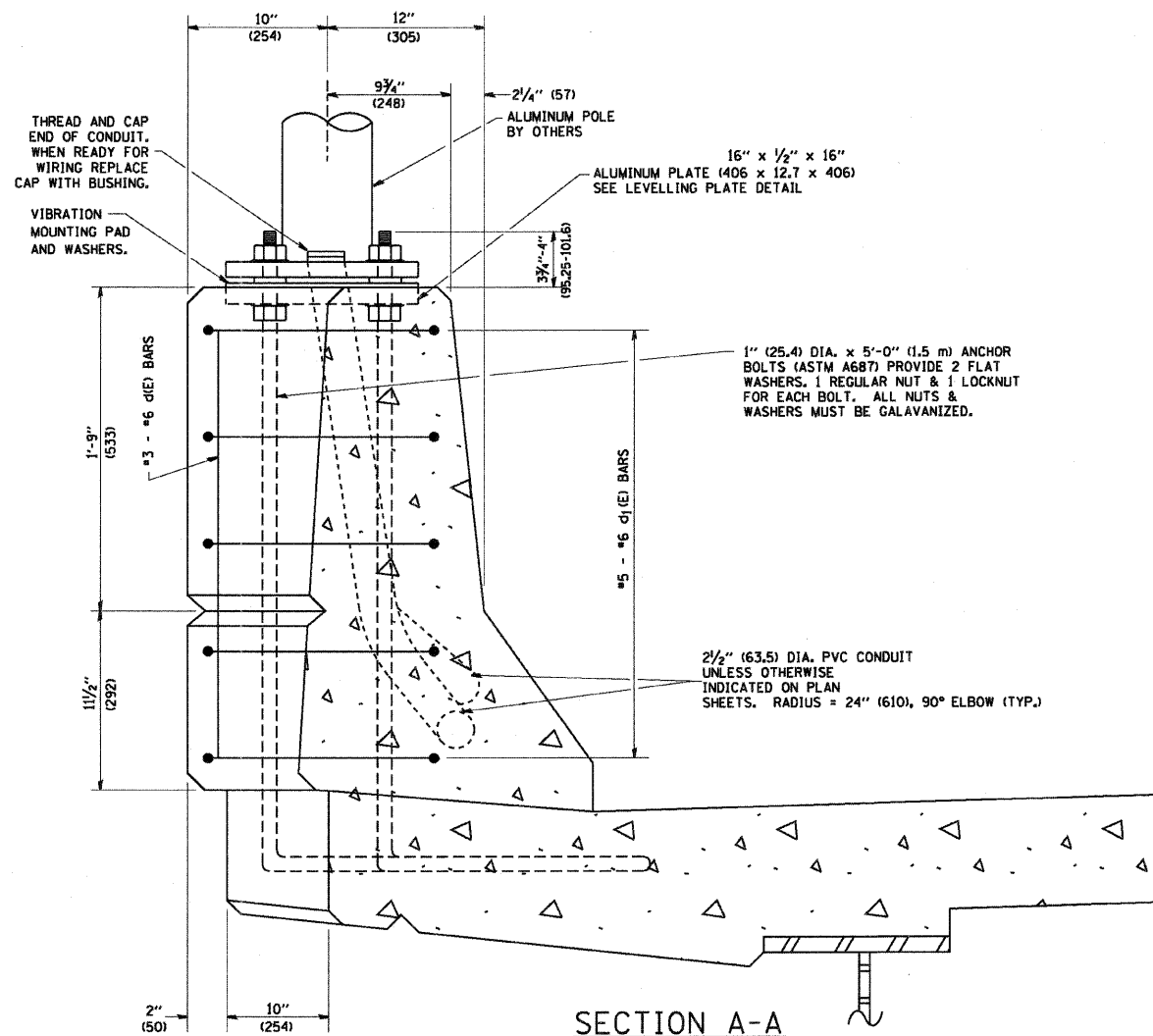
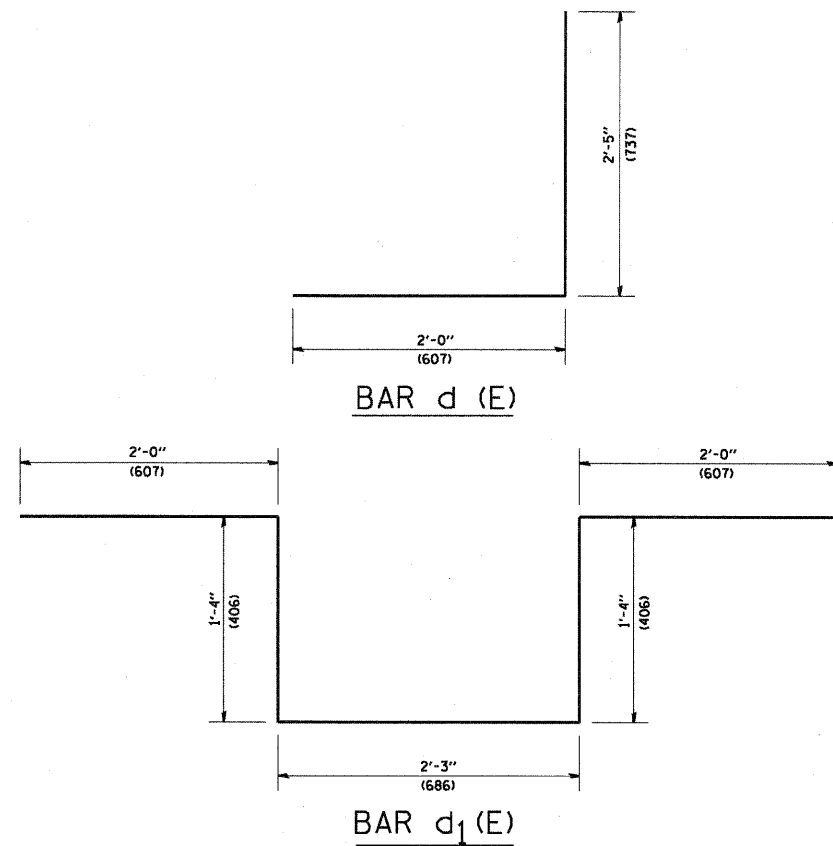
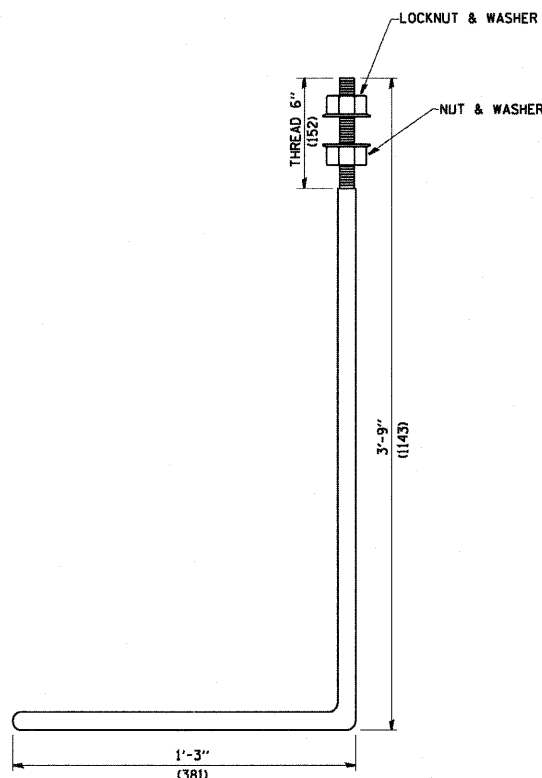


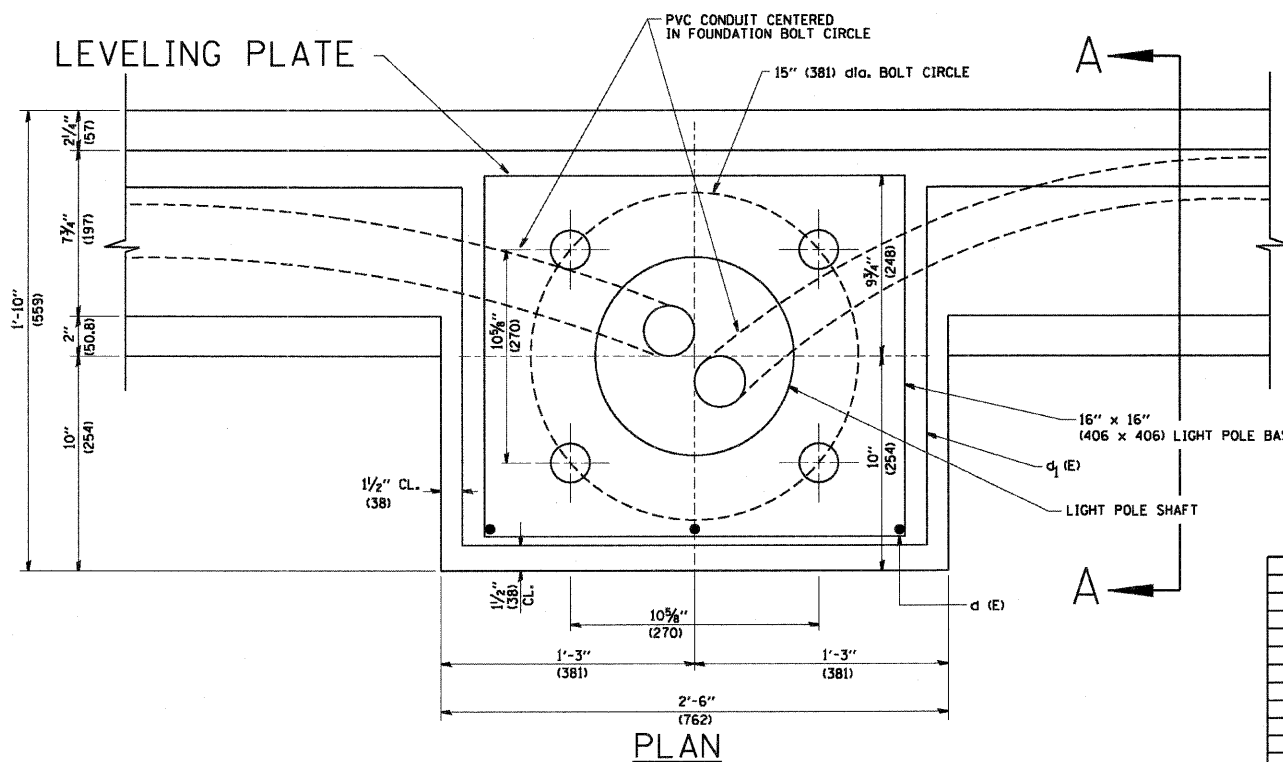
CONTRACT NO.			
F.A. RY.	SECTION	COUNTY	TOTAL SHEET NO.
307	130 R-2	DUPAGE, KANE	647 441
STA.		TO STA.	
FED. ROAD DIST. NO.		ILLINOIS FED. AID PROJECT	



LEVELLING PLATE DETAIL



1" (25.4) dia. ANCHOR BOLT



PLAN

NOTES

1. ALL DIMENSIONS ARE IN INCHES (MILLIMETERS) UNLESS OTHERWISE SHOWN.
2. LEVEL LIGHT POLE PLATES, USING THE FLANGE NUTS, PRIOR TO POURING THE PARAPET WALL. THE TOP OF THE PLATE SHALL BE AT THE SAME ELEVATION AS THE FINISHED CONCRETE PARAPET.
3. THE COST OF ANCHOR BOLTS, CONDUIT, LEVELLING PLATE AND FOUNDATION IS INCLUDED IN THE COST OF THE BRIDGE STRUCTURE.

REVISIONS	
NAME	DATE
	04/22/02

ILLINOIS DEPARTMENT OF TRANSPORTATION
 LIGHT POLE MOUNTED
 ON CONCRETE PARAPET WALL
 15" (381 mm) BOLT CIRCLE

SCALE: NONE

DRAWN BY
 CHECKED BY
 BE-330

BE-330