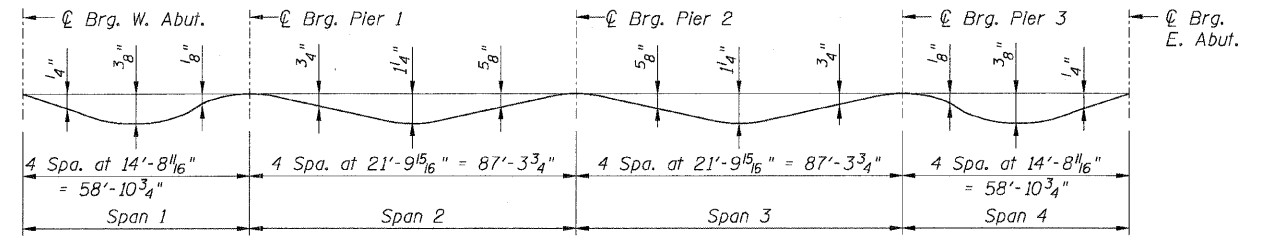
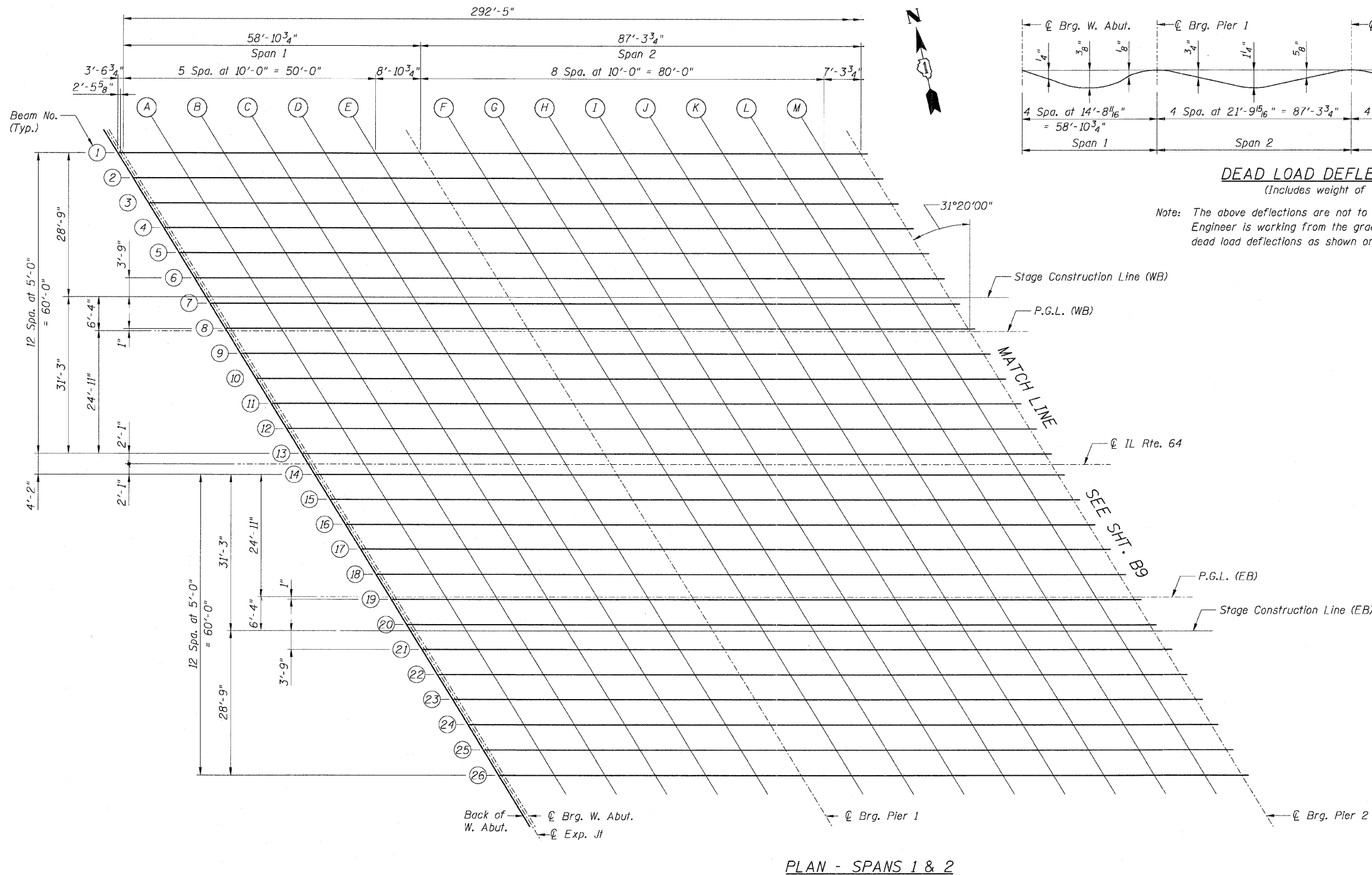


STATE OF ILLINOIS
 DEPARTMENT OF TRANSPORTATION

F.A.P. RTE.	SECTION	COUNTY	TOTAL SHEETS	SHEET NO.
307	130 R-2	DUPAGE, KANE	647	451
STA. 3356+37.74		TO STA. 3359+24.72		
FED. ROAD DIST. NO.	ILLINOIS FED. AID PROJECT			

62410



DEAD LOAD DEFLECTION DIAGRAM
 (Includes weight of concrete only)

Note: The above deflections are not to be used in the field if the Engineer is working from the grade elevations adjusted for dead load deflections as shown on Sheets B10 to B17.

PLAN - SPANS 1 & 2

NOTES:
 For Spans 3 and 4 Top of Slab Elevation Locations see Sheet B9.
 For Top of Slab Elevations see Sheets B10 thru B17.

Sheet B8 of 56



REVISIONS	
NAME	DATE

F.A.P. ROUTE 307 ILLINOIS ROUTE 64
 (NORTH AVENUE)
 OVER E.J.&E. AND U.P. R.R.
 TOP OF SLAB ELEVATION LOCATIONS - I
 STRUCTURE NUMBER 022-0190
 FAP 307 SECTION 130 R-2
 DUPAGE COUNTY
 STA. 3357+81.21

SCALE: None
 DATE: MAY 13, 2011

DRAWN BY: WRK/CHD
 CHECKED BY: RDP