

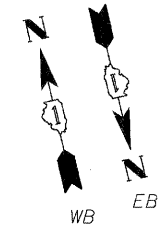
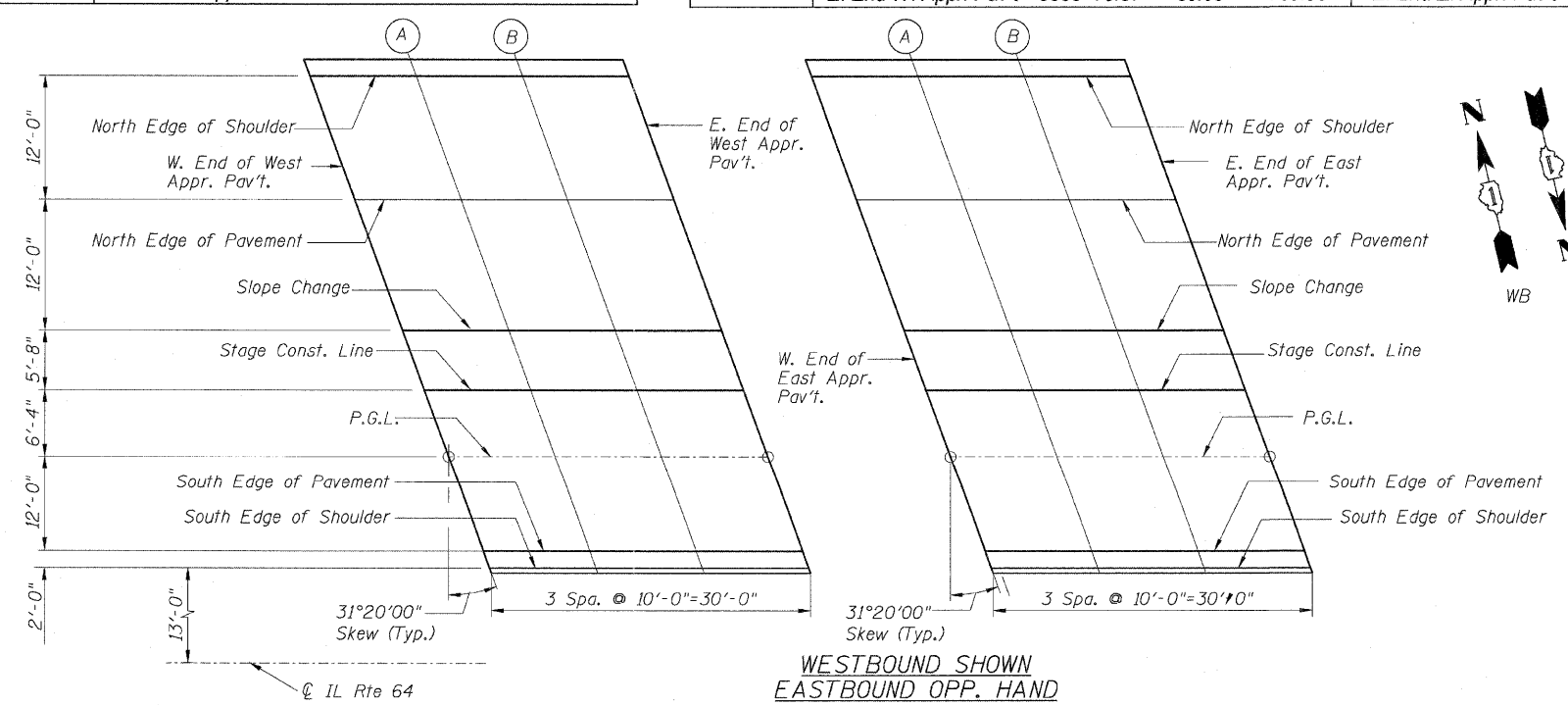
STATE OF ILLINOIS
 DEPARTMENT OF TRANSPORTATION

F.A.P. RTE.	SECTION	COUNTY	TOTAL SHEETS	SHEET NO.
307	130 R-2	DUPAGE, KANE	647	461
STA. 3356+37.74		TO STA. 3359+24.72		
FED. ROAD DIST. NO.		ILLINOIS FED. AID PROJECT		

62410

WESTBOUND WEST APPROACH					WESTBOUND EAST APPROACH				
	Location	Station	Offset	Theoretical Grade Elevations		Location	Station	Offset	Theoretical Grade Elevations
North Edge of Shoulder	W. End W. Appr. Pav't	3355+63.67	-63.00	788.77	W. End E. Appr. Pav't	3358+92.04	-63.00	789.85	
	A	3355+73.67	-63.00	788.91	A	3359+02.04	-63.00	789.76	
	B	3355+83.67	-63.00	789.05	B	3359+12.04	-63.00	789.67	
	E. End W. Appr. Pav't	3355+93.67	-63.00	789.18	E. End E. Appr. Pav't	3359+22.04	-63.00	789.56	
North Edge of Pavement	W. End W. Appr. Pav't	3355+70.98	-51.00	789.12	W. End E. Appr. Pav't	3358+99.35	-51.00	790.02	
	A	3355+80.98	-51.00	789.26	A	3359+09.35	-51.00	789.93	
	B	3355+90.98	-51.00	789.39	B	3359+19.35	-51.00	789.83	
	E. End W. Appr. Pav't	3356+00.98	-51.00	789.52	E. End E. Appr. Pav't	3359+29.35	-51.00	789.73	
Slope Change (Transition from 1.5% to 2.0%)	W. End W. Appr. Pav't	3355+78.28	-39.00	789.46	W. End E. Appr. Pav't	3359+06.66	-39.00	790.20	
	A	3355+88.28	-39.00	789.59	A	3359+16.66	-39.00	790.10	
	B	3355+98.28	-39.00	789.72	B	3359+26.66	-39.00	790.00	
	E. End W. Appr. Pav't	3356+08.28	-39.00	789.84	E. End E. Appr. Pav't	3359+36.66	-39.00	789.88	
Stage Construction Line	W. End W. Appr. Pav't	3355+81.73	-33.33	789.60	W. End E. Appr. Pav't	3359+10.11	-33.33	790.25	
	A	3355+91.73	-33.33	789.72	A	3359+20.11	-33.33	790.15	
	B	3356+01.73	-33.33	789.85	B	3359+30.11	-33.33	790.04	
	E. End W. Appr. Pav't	3356+11.73	-33.33	789.97	E. End E. Appr. Pav't	3359+40.11	-33.33	789.93	
Profile Grade Line	W. End W. Appr. Pav't	3355+85.58	-27.00	789.74	W. End E. Appr. Pav't	3359+13.96	-27.00	790.31	
	A	3355+95.58	-27.00	789.87	A	3359+23.96	-27.00	790.20	
	B	3356+05.58	-27.00	789.99	B	3359+33.96	-27.00	790.09	
	E. End W. Appr. Pav't	3356+15.58	-27.00	790.11	E. End E. Appr. Pav't	3359+43.96	-27.00	789.98	
South Edge of Pavement	W. End W. Appr. Pav't	3355+92.89	-15.00	790.01	W. End E. Appr. Pav't	3359+21.27	-15.00	790.41	
	A	3356+02.89	-15.00	790.14	A	3359+31.27	-15.00	790.30	
	B	3356+12.89	-15.00	790.26	B	3359+41.27	-15.00	790.64	
	E. End W. Appr. Pav't	3356+22.89	-15.00	790.37	E. End E. Appr. Pav't	3359+51.27	-15.00	790.07	
South Edge of Shoulder	W. End W. Appr. Pav't	3355+94.11	-13.00	789.91	W. End E. Appr. Pav't	3359+22.49	-13.00	790.28	
	A	3356+04.11	-13.00	790.03	A	3359+32.49	-13.00	790.17	
	B	3356+14.11	-13.00	790.15	B	3359+42.49	-13.00	788.95	
	E. End W. Appr. Pav't	3356+24.11	-13.00	790.26	E. End E. Appr. Pav't	3359+52.49	-13.00	789.93	

EASTBOUND WEST APPROACH					EASTBOUND EAST APPROACH				
	Location	Station	Offset	Theoretical Grade Elevations		Location	Station	Offset	Theoretical Grade Elevations
North Edge of Shoulder	W. End W. Appr. Pav't	3356+09.93	13.00	790.10	W. End E. Appr. Pav't	3359+38.32	13.00	790.10	
	A	3356+19.93	13.00	790.22	A	3359+48.32	13.00	789.98	
	B	3356+29.93	13.00	790.32	B	3359+58.32	13.00	789.86	
	E. End W. Appr. Pav't	3356+39.93	13.00	790.42	E. End E. Appr. Pav't	3359+68.32	13.00	789.72	
North Edge of Pavement	W. End W. Appr. Pav't	3356+11.15	15.00	790.24	W. End E. Appr. Pav't	3359+39.53	15.00	790.21	
	A	3356+21.15	15.00	790.35	A	3359+49.53	15.00	790.09	
	B	3356+31.15	15.00	790.45	B	3359+59.53	15.00	789.96	
	E. End W. Appr. Pav't	3356+41.15	15.00	790.55	E. End E. Appr. Pav't	3359+69.53	15.00	789.83	
Profile Grade Line	W. End W. Appr. Pav't	3356+18.45	27.00	790.14	W. End E. Appr. Pav't	3359+46.84	27.00	789.94	
	A	3356+28.45	27.00	790.25	A	3359+56.84	27.00	789.82	
	B	3356+38.45	27.00	790.35	B	3359+66.84	27.00	789.68	
	E. End W. Appr. Pav't	3356+48.45	27.00	790.44	E. End E. Appr. Pav't	3359+76.84	27.00	789.54	
Stage Construction Line	W. End W. Appr. Pav't	3356+22.31	33.33	790.09	W. End E. Appr. Pav't	3359+50.69	33.33	789.80	
	A	3356+32.31	33.33	790.19	A	3359+60.69	33.33	789.67	
	B	3356+42.31	33.33	790.29	B	3359+70.69	33.33	789.54	
	E. End W. Appr. Pav't	3356+52.31	33.33	790.38	E. End E. Appr. Pav't	3359+80.69	33.33	789.39	
Slope Change (Transition from 1.5% to 2.0%)	W. End W. Appr. Pav't	3356+25.76	39.00	790.04	W. End E. Appr. Pav't	3359+54.14	39.00	789.67	
	A	3356+35.76	39.00	790.14	A	3359+64.14	39.00	789.54	
	B	3356+45.76	39.00	790.24	B	3359+74.14	39.00	789.40	
	E. End W. Appr. Pav't	3356+55.76	39.00	790.32	E. End E. Appr. Pav't	3359+84.14	39.00	789.26	
South Edge of Pavement	W. End W. Appr. Pav't	3356+33.06	51.00	789.87	W. End E. Appr. Pav't	3359+61.45	51.00	789.34	
	A	3356+43.06	51.00	789.97	A	3359+71.45	51.00	789.20	
	B	3356+53.06	51.00	790.06	B	3359+81.45	51.00	789.06	
	E. End W. Appr. Pav't	3356+63.06	51.00	790.14	E. End E. Appr. Pav't	3359+91.45	51.00	788.91	
South Edge of Shoulder	W. End W. Appr. Pav't	3356+40.37	63.00	789.71	W. End E. Appr. Pav't	3359+68.75	63.00	789.00	
	A	3356+50.37	63.00	789.80	A	3359+78.75	63.00	788.86	
	B	3356+60.37	63.00	789.88	B	3359+88.75	63.00	788.71	
	E. End W. Appr. Pav't	3356+70.37	63.00	789.96	E. End E. Appr. Pav't	3359+98.75	63.00	788.55	



- NOTES:**
- Offsets taken from the IL Route 64 Center Line
 - For Approach Slab details, see sheets B26 to B28

REVISIONS	
NAME	DATE

Sheet B18 of 56

F.A.P. ROUTE 307 ILLINOIS ROUTE 64
 (NORTH AVENUE)
 OVER E.J.&E. AND U.P. R.R.
 TOP OF SLAB ELEVATION TABLES - IX
 (APPROACH)
 STRUCTURE NUMBER 022-0190
 FAP 307 SECTION 130 R-2
 DUPAGE COUNTY
 STA. 3357+81.21

SCALE: None
 DATE: MAY 13, 2011

DRAWN BY:
 CHECKED BY: RDP

