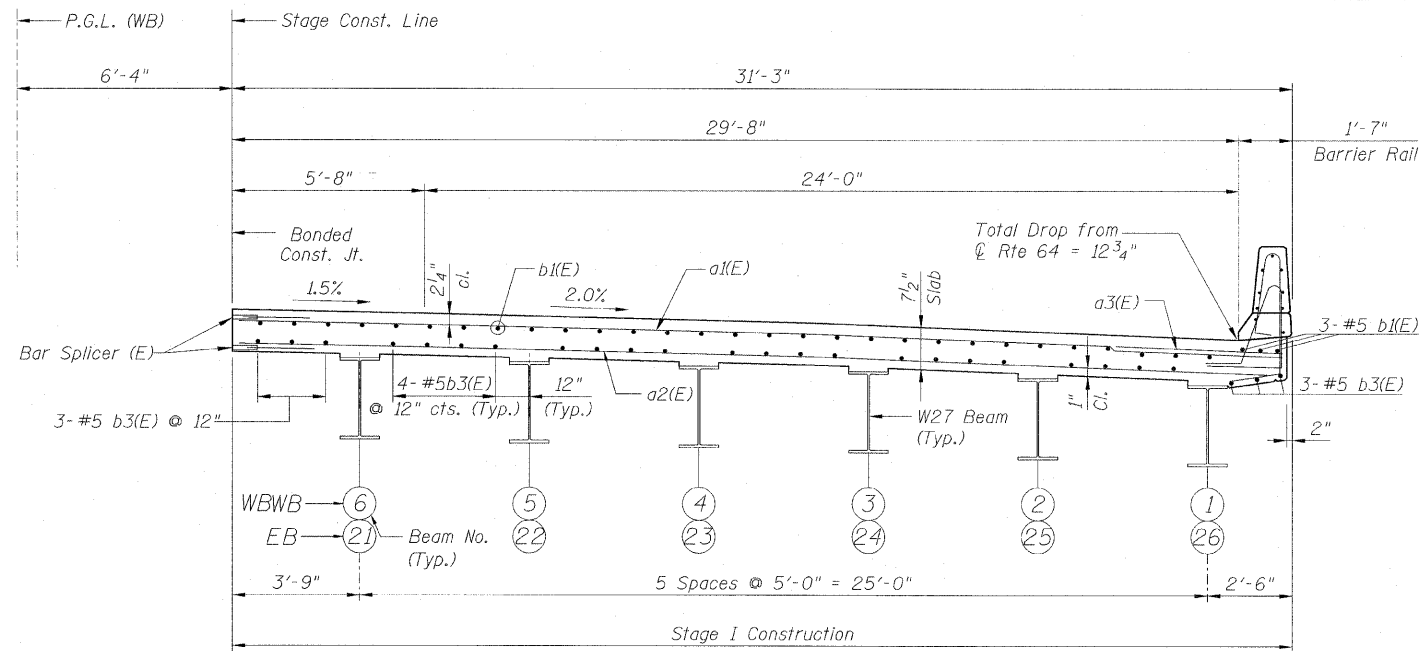


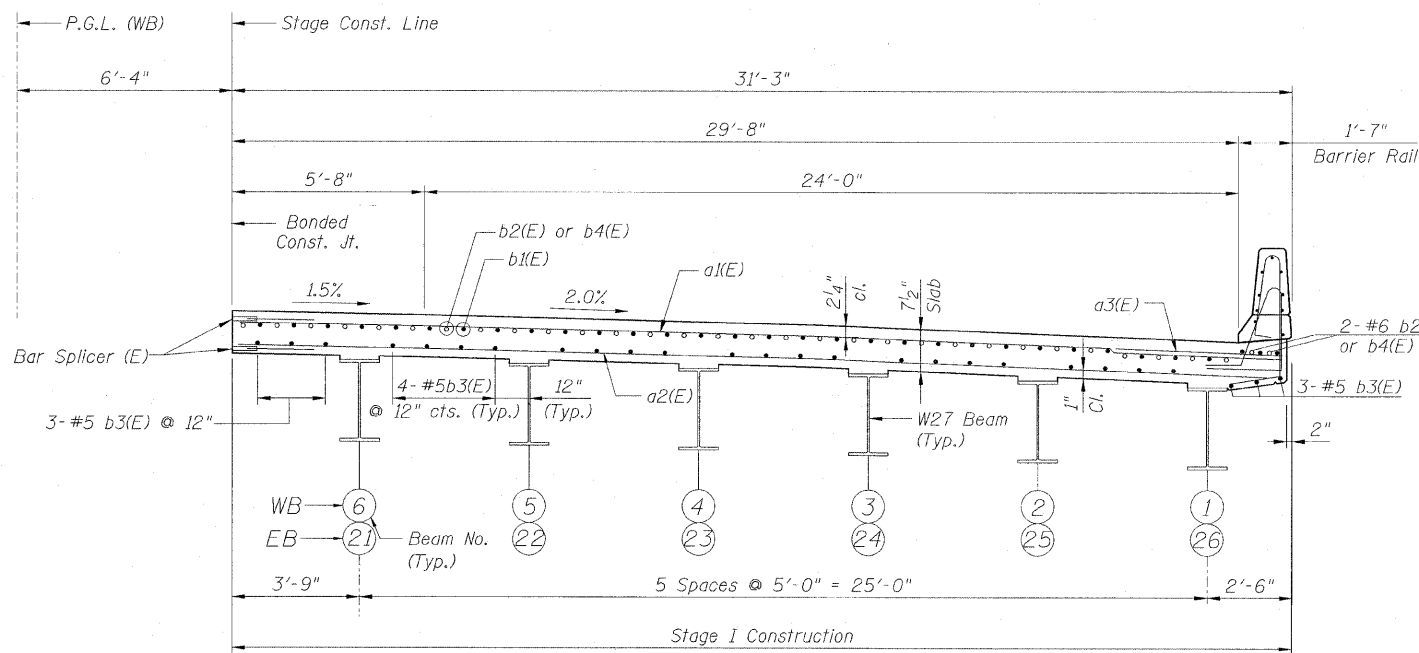
STATE OF ILLINOIS
 DEPARTMENT OF TRANSPORTATION

F.A.P. RTE.	SECTION	COUNTY	TOTAL SHEETS	SHEET NO.
307	130 R-2	DUPAGE, KANE	647	464
STA. 3356+37.74		TO STA. 3359+24.72		
FED. ROAD DIST. NO.		ILLINOIS	FED. AID PROJECT	

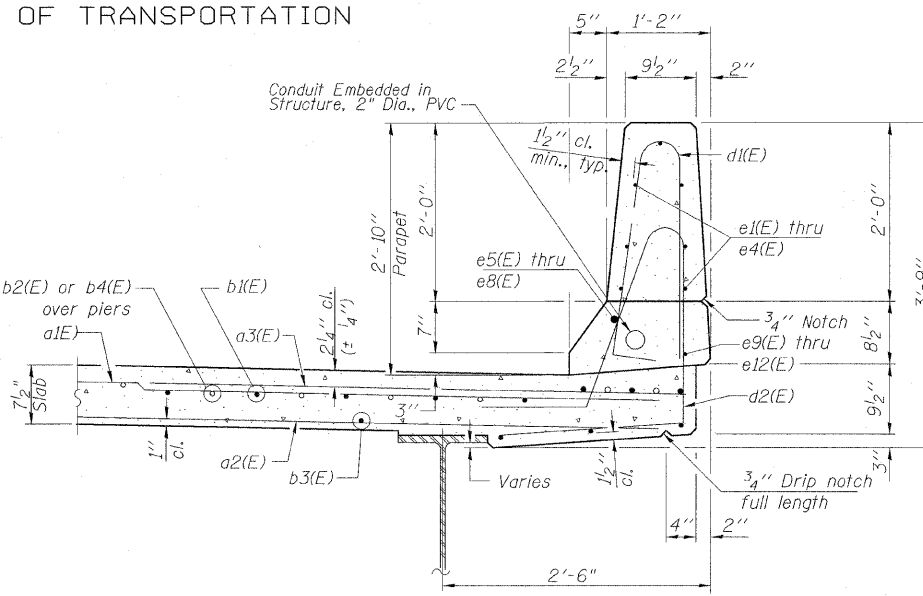
62410



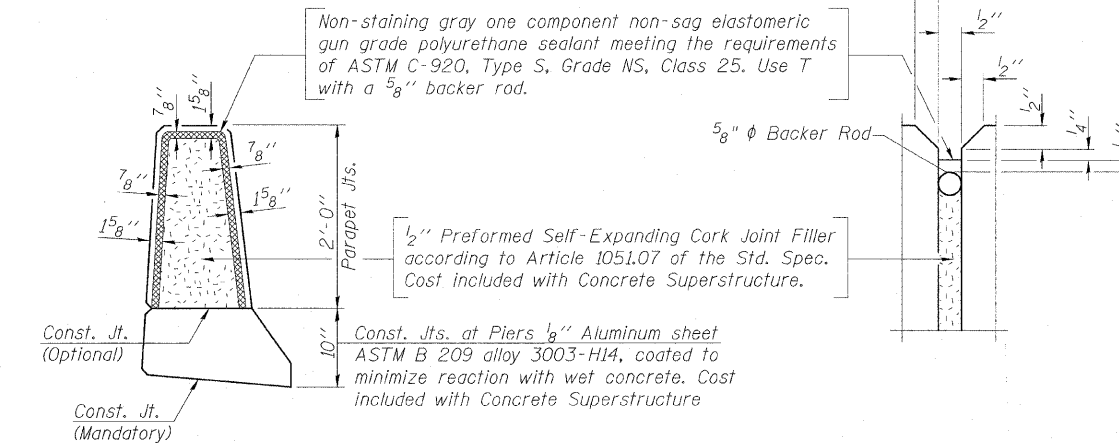
TYPICAL DECK CROSS SECTION - MIDSPAN
 W.B. STAGE I - SHOWN
 E.B. STAGE I - OPP. HAND
 (Looking West)



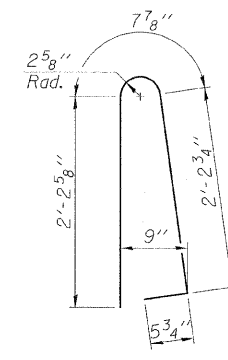
TYPICAL DECK CROSS SECTION - PIER
 W.B. STAGE I - SHOWN
 E.B. STAGE I - OPP. HAND
 (Looking West)



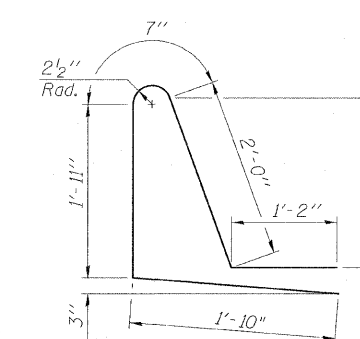
SECTION THRU PARAPET



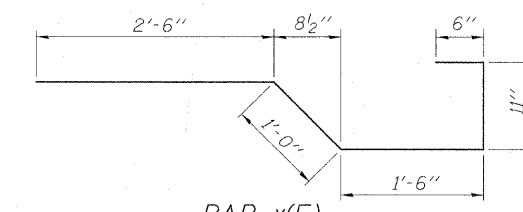
PARAPET JOINT DETAILS



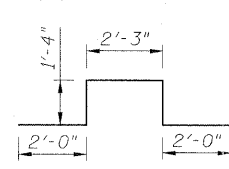
BAR d1(E)



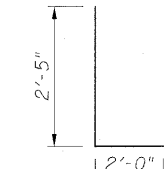
BAR d2(E)



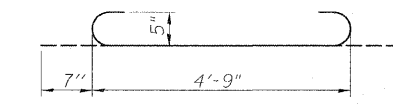
BAR x(E)



BAR d3(E)



BAR d4(E)



a9(E) BAR

STAGE I
 BILL OF MATERIAL

Bar	No.	Size	Length	Shape
a1(E)	784	#5	30'-9"	
a2(E)	704	#5	30'-1"	
a3(E)	392	#6	6'-6"	
a4(E)	16	#6	36'-3"	
a8(E)	4	#5	36'-5"	
a9(E)	72	#5	5'-11"	
b1(E)	726	#5	29'-1"	
b2(E)	128	#6	44'-6"	
b3(E)	624	#5	26'-8"	
b4(E)	64	#6	49'-2"	
d1(E)	644	#5	5'-7"	
d2(E)	644	#5	7'-6"	
d3(E)	10	#6	8'-11"	
d4(E)	6	#6	4'-5"	
e1(E)	84	#4	16'-8"	
e2(E)	56	#4	8'-8"	
e3(E)	112	#4	16'-9"	
e4(E)	28	#4	10'-0"	
e5(E)	8	#8	28'-2"	
e6(E)	8	#8	8'-8"	
e7(E)	8	#8	36'-8"	
e8(E)	4	#8	10'-0"	
e9(E)	8	#5	26'-9"	
e10(E)	8	#5	8'-8"	
e11(E)	8	#5	35'-3"	
e12(E)	4	#5	10'-0"	
x(E)	92	#5	6'-5"	

Item	Unit	Quantity
Concrete Superstructure	Cu. Yd.	529.2
Reinforcement Bars, Epoxy Coated	Lbs.	119,770
Bridge Deck Grooving	Sq. Yd.	1,859
Protective Coat	Sq. Yd.	2,226
Conduit Embedded in Structure, 2" Dia., PVC	Foot	612

NOTES:

- See Light Pole Foundation Details on Sheet B25 for Bars d3(E) & d4(E).
- See Section A-A on Sheet B25 for bar a9(E).

Sheet B21 of 56

REVISIONS	
NAME	DATE

F.A.P. ROUTE 307 ILLINOIS ROUTE 64
 (NORTH AVENUE)
 OVER E.J.&E. AND U.P. R.R.
 TYPICAL CROSS SECTION AND DETAILS
 STAGE I
 STRUCTURE NUMBER 022-0190
 FAP 307 SECTION 130 R-2
 DUPAGE COUNTY
 STA. 3357+81.21

SCALE: None
 DATE: NOVEMBER 1, 2011
 DRAWN BY: MRK/CHD
 CHECKED BY: RDP

