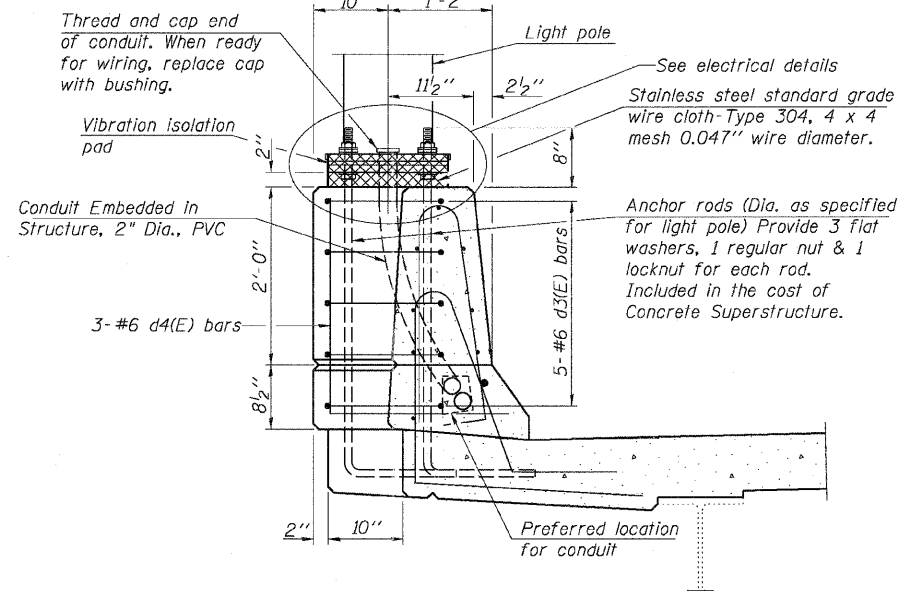
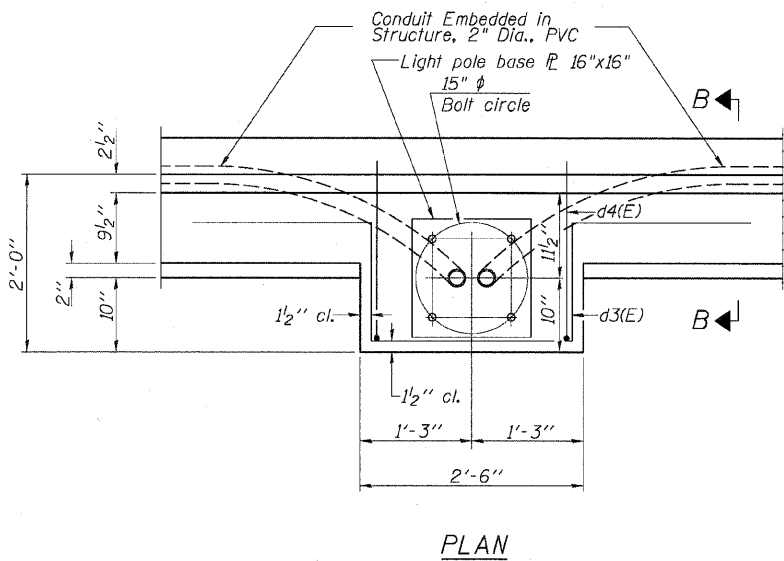
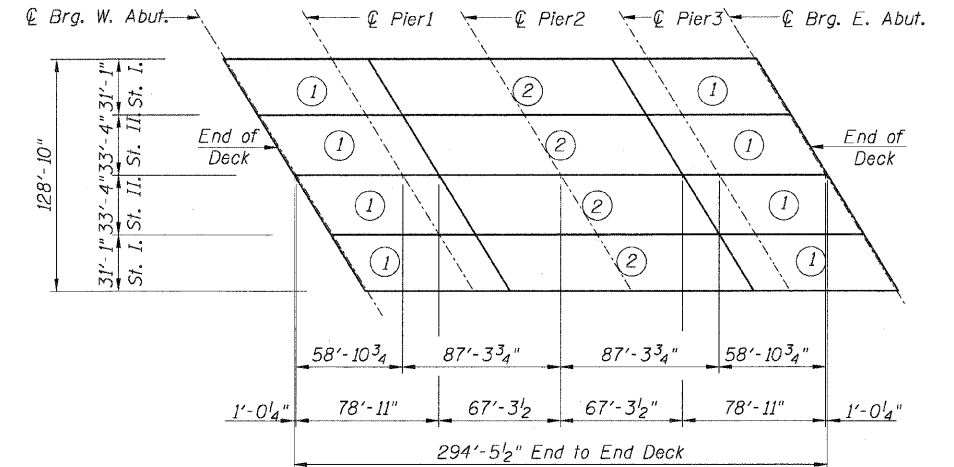
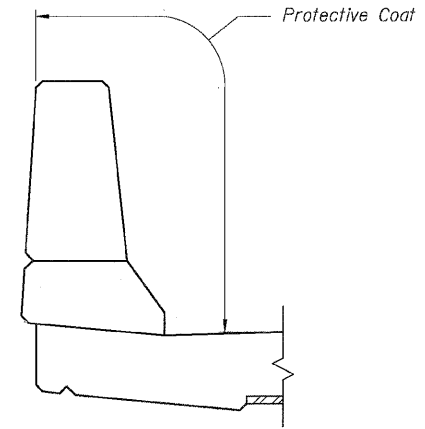
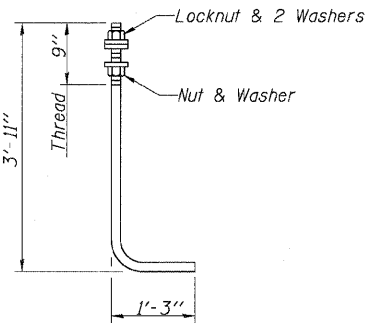
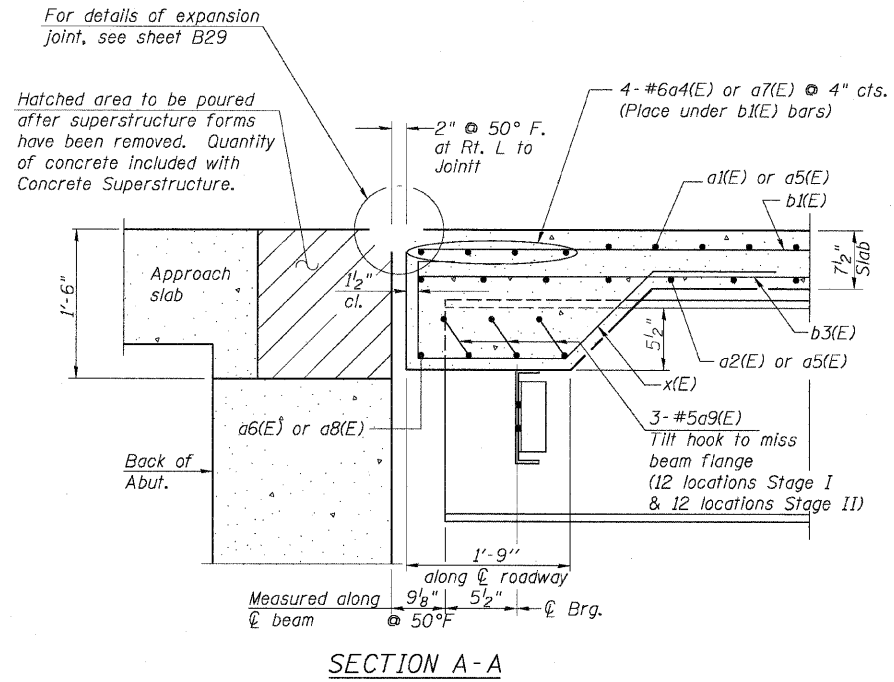


STATE OF ILLINOIS  
 DEPARTMENT OF TRANSPORTATION

F.A.P. RTE.	SECTION	COUNTY	TOTAL SHEETS	SHEET NO.
307	130 R-2	DUPAGE, KANE	647	468
STA. 3356+37.74 TO STA. 3359+24.72				
FED. ROAD DIST. NO.			ILLINOIS FED. AID PROJECT	

62410



NOTES:

- For location of Section A-A see Sheets B22 and B23.
- For Typical Sections, Details and Bill of Material see Sheets B21 and B24.
- When the deck pour is stopped for the day at one or more of the transverse bonded construction joints in the deck pouring sequence as shown, the next pour shall not be made until both of the following are met:
  - At least 72 hours shall have elapsed from the end of the previous pour.
  - The concrete strength shall have attained a minimum flexural strength of 650 psi or a minimum compressive strength of 3500 psi.

LIGHT POLE FOUNDATION DETAILS

Note: See Electrical Drawings for additional details.



REVISIONS		F.A.P. ROUTE 307 ILLINOIS ROUTE 64 (NORTH AVENUE) OVER E.J.&E. AND U.P. R.R. DECK SECTIONS & DETAILS
NAME	DATE	
		STRUCTURE NUMBER 022-0190 FAP 307 SECTION 130 R-2 DUPAGE COUNTY STA. 3357+81.21

SCALE: None DRAWN BY: MRK  
 DATE: MAY 13, 2011 CHECKED BY: RDP