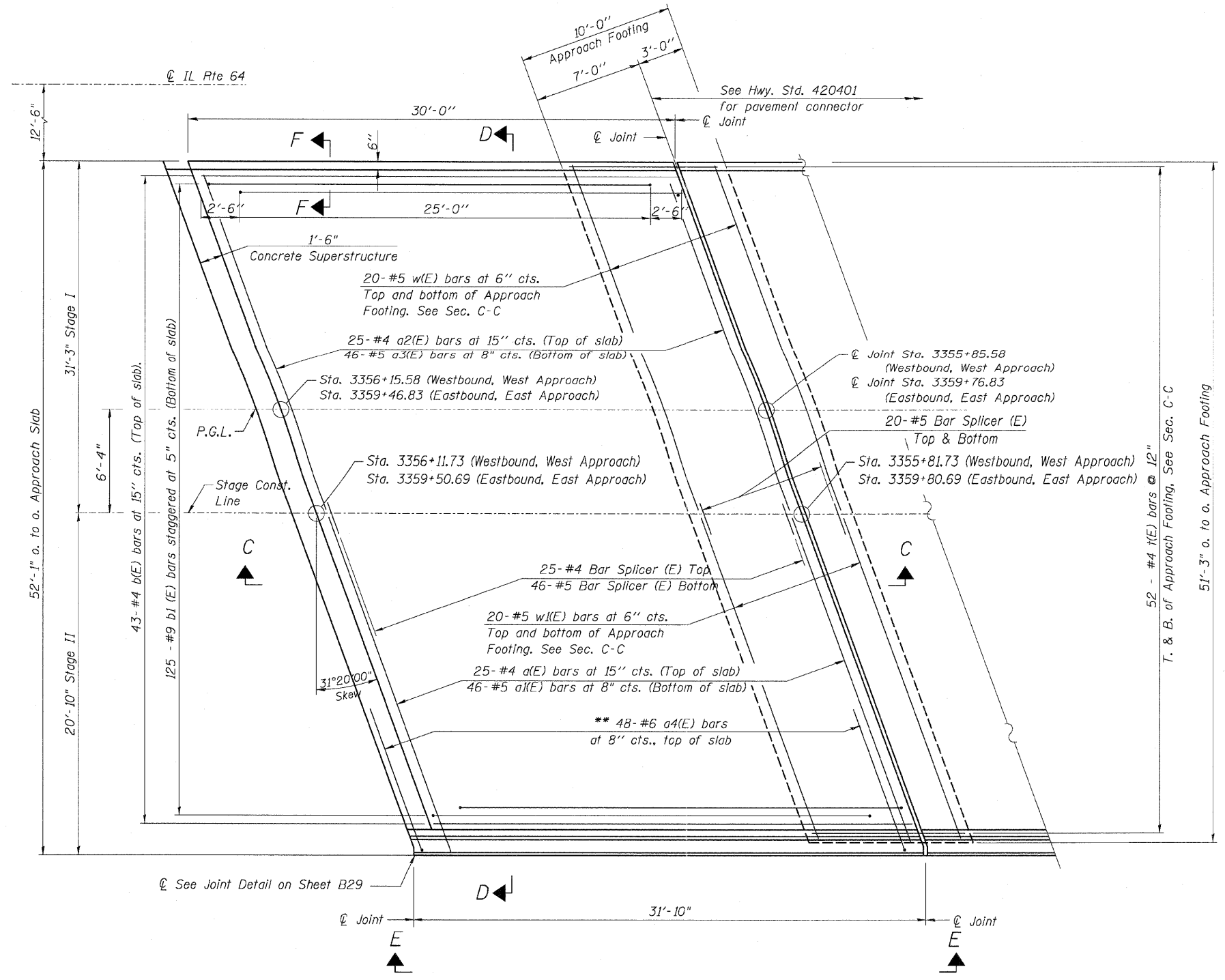
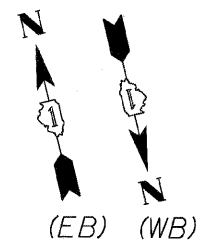


STATE OF ILLINOIS
 DEPARTMENT OF TRANSPORTATION

F.A.P. RTE.	SECTION	COUNTY	TOTAL SHEETS	SHEET NO.
307	130 R-2	DUPAGE, KANE	647	470
STA. 3356+37.74 TO STA. 3359+24.72				
FED. ROAD DIST. NO.		ILLINOIS FED. AID PROJECT		

Notes:
 See Sheet B28 for Sections C-C & D-D and View E-E. 62410
 See Sheet B26 for Section F-F
 a(E) and a1(E) bar spacings measured along ϕ Rdwy.



PLAN

Westbound, West Approach
 Eastbound, East Approach

* Tilt #9 b(E) bars as required to maintain clearance.
 ** Space to miss a(E) bars, typ. each parapet.



REVISIONS	
NAME	DATE

Sheet B27 of 56

F.A.P. ROUTE 307 ILLINOIS ROUTE 64
 (NORTH AVENUE)
 OVER E.J.&E. AND U.P. R.R.
 APPROACH SLABS II

STRUCTURE NUMBER 022-0190
 FAP 307 SECTION 130 R-2
 DUPAGE COUNTY
 STA. 3357+81.21

SCALE: None
 DATE: MAY 13, 2011

DRAWN BY: MRK
 CHECKED BY: MJP