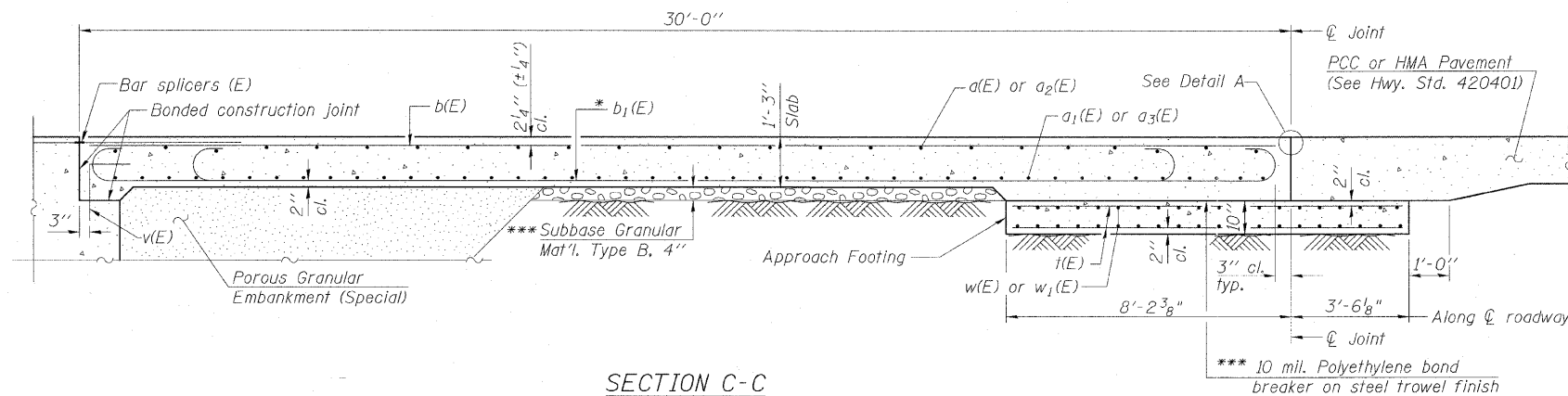


STATE OF ILLINOIS
 DEPARTMENT OF TRANSPORTATION

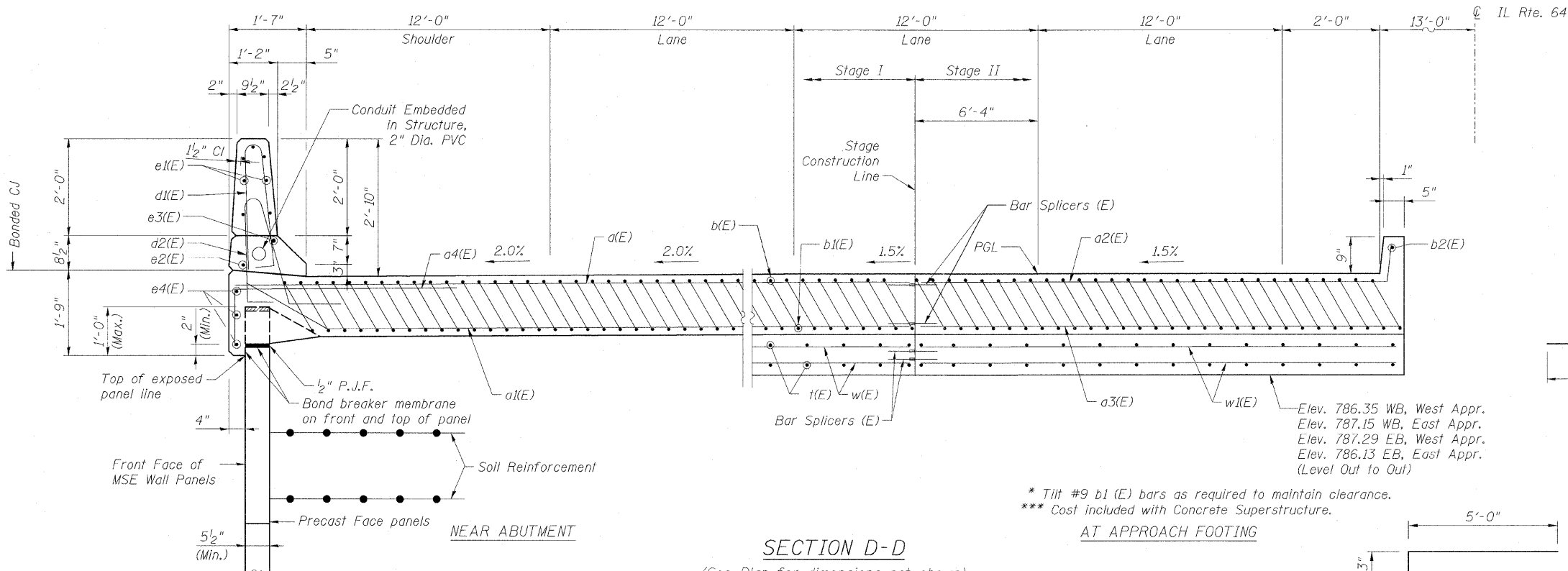
F.A.P. RTE.	SECTION	COUNTY	TOTAL SHEETS	SHEET NO.
307	130 R-2	DUPAGE, KANE	647	471
STA. 3356+37.74		TO STA. 3359+24.72		
FED. ROAD DIST. NO.		ILLINOIS FED. AID PROJECT		

Notes:

See Sheet B18 for Top of Slab Elevations.
 Approach slab and parapet concrete shall be paid for as Concrete Superstructure.
 Approach footing concrete shall be paid for as Concrete Structures.
 Reinforcement shall be paid for as Reinforcement Bars, Epoxy Coated.
 For v(E) bar details, see Sheet B41
 The approach footing maximum applied service bearing pressure (Qmax) = 2.0 ksf.
 For bar splicer details, see Sheet B52
 Cost of excavation for approach footing included with Concrete Structures.
 For Porous Granular Embankment (Special) and drainage treatment details, see Sheet B5
 For additional parapet details, see Sheet B26.
 See Sheet B26 for Detail A.

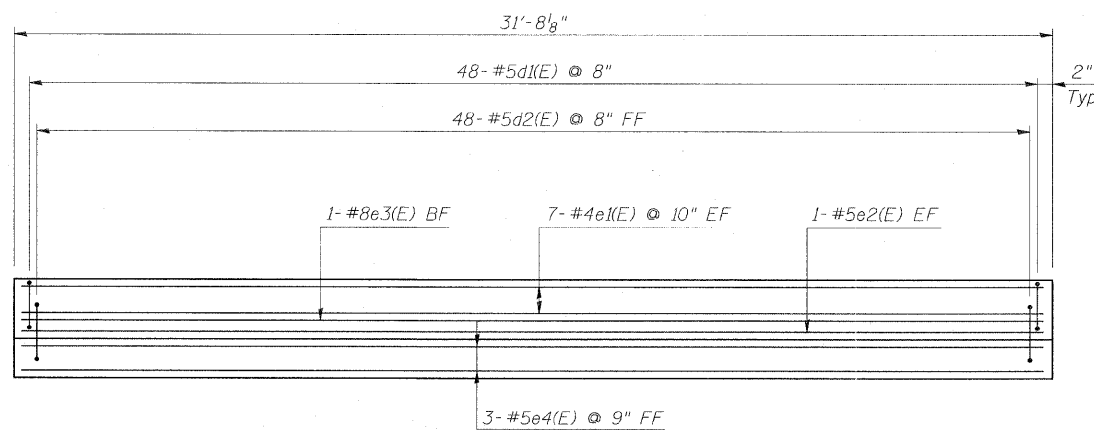


SECTION C-C

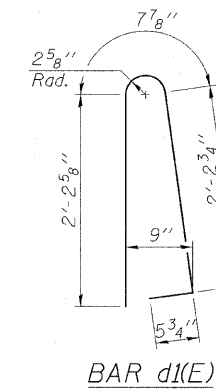


SECTION D-D

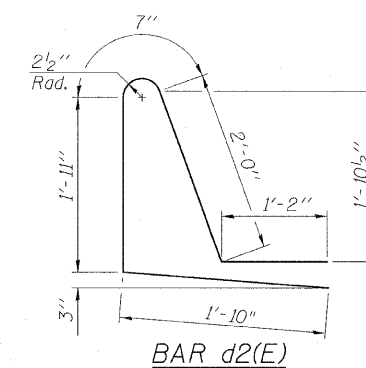
(See Plan for dimensions not shown)



VIEW E-E



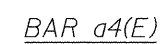
BAR d1(E)



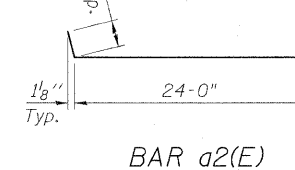
BAR d2(E)

FOUR APPROACHES
 BILL OF MATERIAL

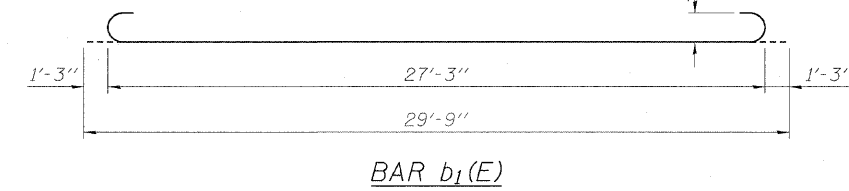
Bar	No.	Size	Length	Shape
a1(E)	100	#4	36'-4"	—
a2(E)	184	#5	31'-1"	—
a3(E)	100	#4	24'-9"	—
a4(E)	184	#5	24'-1"	—
a4(E)	192	#6	6'-3"	—
b1(E)	172	#4	29'-8"	—
b2(E)	500	#9	29'-9"	—
b2(E)	4	#4	29'-8"	—
d1(E)	192	#5	5'-7"	—
d2(E)	192	#5	7'-6"	—
d3(E)	10	#6	8'-11"	—
d4(E)	6	#4	4'-5"	—
d5(E)	6	#6	4'-9"	—
e1(E)	28	#4	31'-4"	—
e2(E)	4	#5	31'-4"	—
e3(E)	4	#8	31'-4"	—
e4(E)	12	#5	31'-4"	—
f(E)	416	#4	11'-4"	—
w(E)	160	#5	25'-1"	—
w1(E)	160	#5	34'-3"	—
Item Unit Quantity				
Concrete Superstructure	Cu. Yd.	336.5		
Concrete Structures	Cu. Yd.	75.3		
Reinforcement Bars, Epoxy Coated	Pound	87,840		
Conduit Embedded in Structure, 2" Dia., PVC	Foot	141		
Bridge Deck Grooving	Sq. Yd.	597		
Protective Coat	Sq. Yd.	738		



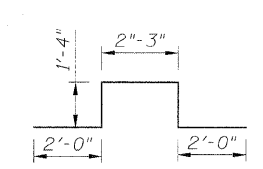
BAR a4(E)



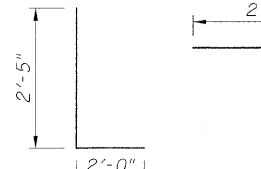
BAR a2(E)



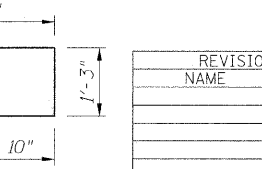
BAR b1(E)



BAR d3(E)



BAR d4(E)



BAR d5(E)

REVISIONS	
NAME	DATE

F.A.P. ROUTE 307 ILLINOIS ROUTE 64
 (NORTH AVENUE)
 OVER E.J.&E. AND U.P. R.R.
 APPROACH SLABS DETAILS
 STRUCTURE NUMBER 022-0190
 FAP 307 SECTION 130 R-2
 DUPAGE COUNTY
 STA. 3357+81.21

SCALE: None
 DATE: NOVEMBER 1, 2011
 DRAWN BY: MRK
 CHECKED BY: MJP

