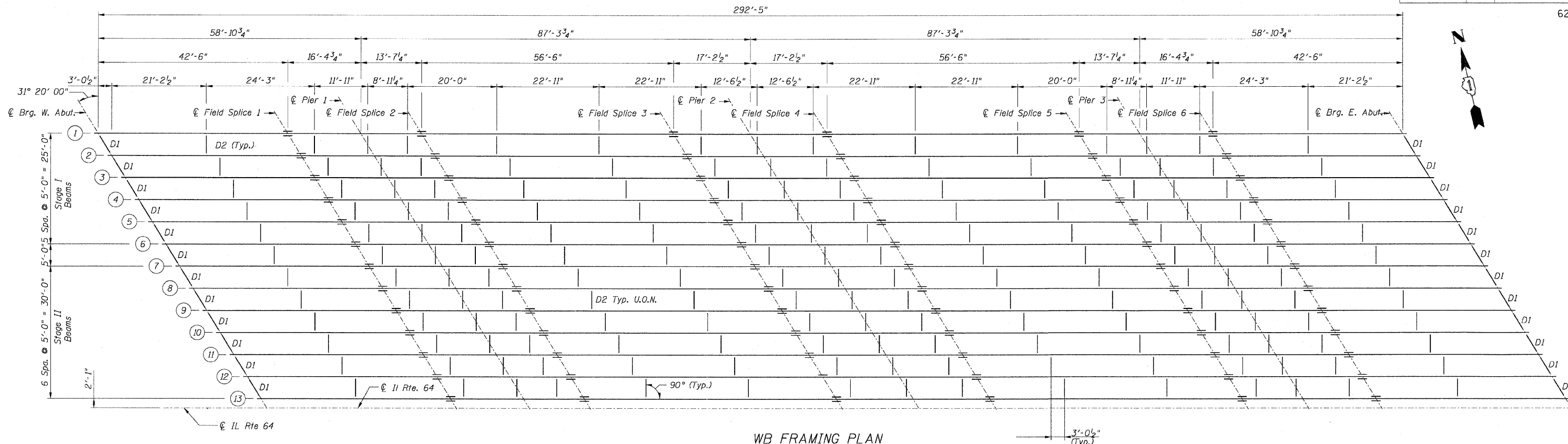


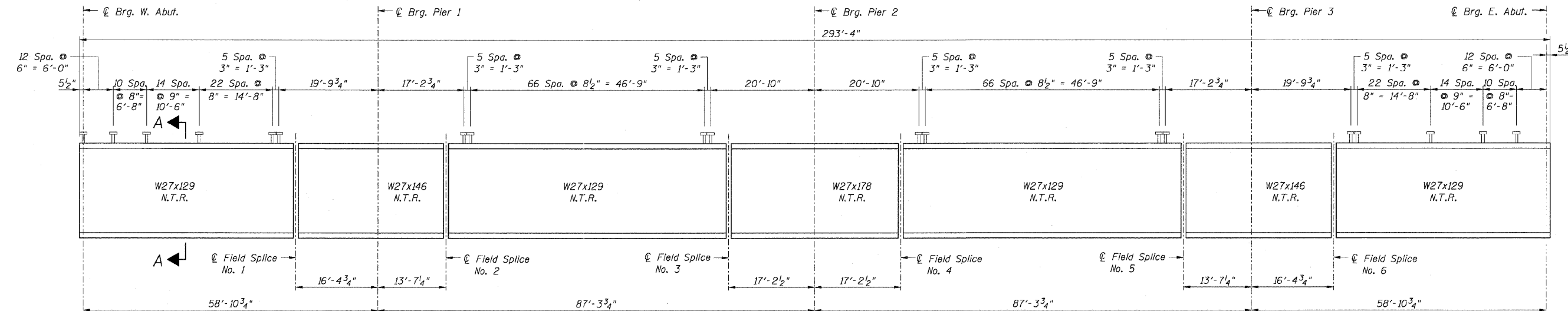
STATE OF ILLINOIS  
 DEPARTMENT OF TRANSPORTATION

F.A.P. RTE.	SECTION	COUNTY	TOTAL SHEETS	SHEET NO.
307	130 R-2	DUPAGE, KANE	647	474
STA. 3356+37.74		TO STA. 3359+24.72		
FED. ROAD DIST. NO.		ILLINOIS FED. AID PROJECT		

62410



WB FRAMING PLAN



BEAM ELEVATION

Connection & Splice R's Not Shown for Clarity.  
 Load carrying components designated "NTR" shall conform to the supplemental Requirements for Notch Toughness, Zone 2.

Sheet B31 of 56



REVISIONS	
NAME	DATE

F.A.P. ROUTE 307 ILLINOIS ROUTE 64  
 (NORTH AVENUE)  
 OVER E.J.&E. AND U.P. R.R.  
 WB FRAMING PLAN  
 STAGES I & II  
 STRUCTURE NUMBER 022-0190  
 FAP 307 SECTION 130 R-2  
 DUPAGE COUNTY  
 STA. 3357+81.21

SCALE: None  
 DATE: MAY 13, 2011

DRAWN BY: MRK  
 CHECKED BY: MJP