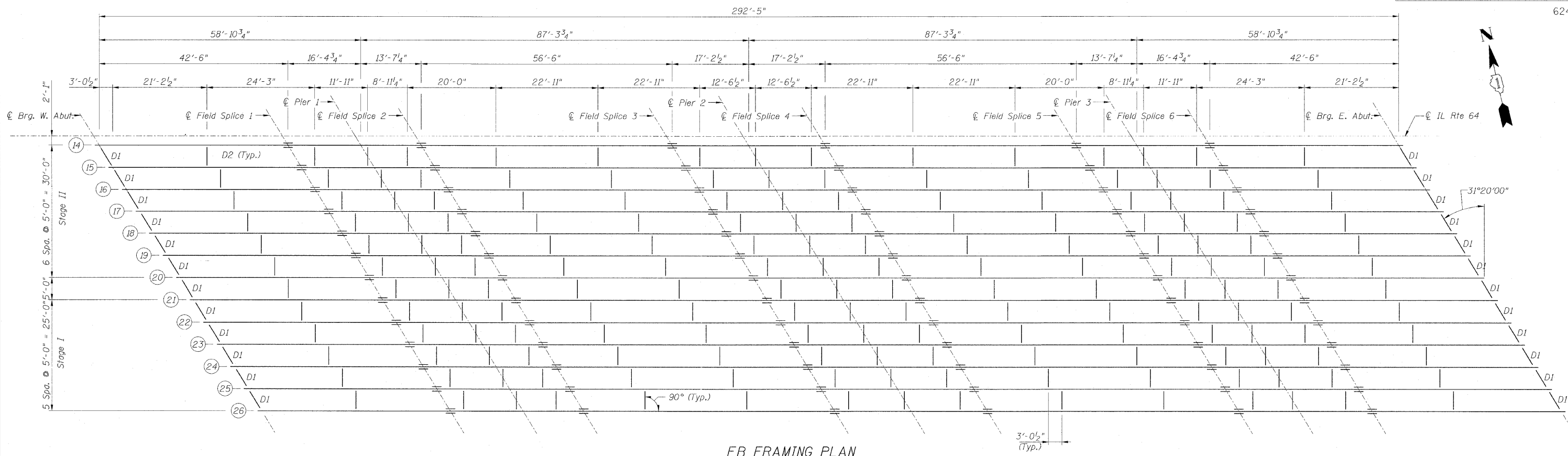


STATE OF ILLINOIS
 DEPARTMENT OF TRANSPORTATION

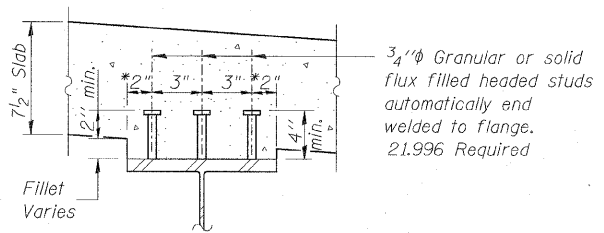
F.A.P. RTE.	SECTION	COUNTY	TOTAL SHEETS	SHEET NO.
307	130 R-2	DUPAGE, KANE	647	475
STA. 3356+37.74		TO STA. 3359+24.72		
FED. ROAD DIST. NO.		ILLINOIS	FED. AID PROJECT	

62410



TOP OF BEAM ELEVATIONS

	1	2	3	4	5	6	7	8	9	10	11	12	13	14	15	16	17	18	19	20	21	22	23	24	25	26
℄ Brg. W. Abut.	788.59	788.73	788.86	789.00	789.11	789.24	789.34	789.45	789.56	789.67	789.78	789.88	789.99	790.01	789.97	789.92	789.88	789.83	789.78	789.73	789.68	789.62	789.54	789.46	789.39	789.31
Field Splice No. 1	788.98	789.11	789.24	789.37	789.47	789.58	789.68	789.78	789.88	789.98	790.08	790.18	790.27	790.29	790.24	790.18	790.12	790.07	790.01	789.95	789.89	789.82	789.73	789.65	789.56	789.48
℄ Brg. Pier 1	789.13	789.26	789.38	789.50	789.60	789.72	789.81	789.91	790.01	790.10	790.19	790.29	790.38	790.40	790.34	790.28	790.22	790.16	790.10	790.04	789.97	789.90	789.81	789.72	789.63	789.54
Field Splice No. 2	789.26	789.38	789.50	789.62	789.72	789.83	789.92	790.01	790.11	790.20	790.29	790.38	790.47	790.48	790.42	790.36	790.30	790.23	790.17	790.11	790.04	789.96	789.87	789.78	789.68	789.59
Field Splice No. 3	789.56	789.67	789.78	789.89	789.97	790.07	790.15	790.23	790.31	790.39	790.47	790.55	790.63	790.63	790.56	790.48	790.41	790.33	790.26	790.18	790.10	790.01	789.91	789.80	789.70	789.59
℄ Brg. Pier 2	789.60	789.70	789.81	789.91	790.00	790.09	790.17	790.25	790.32	790.40	790.47	790.55	790.62	790.62	790.54	790.47	790.39	790.31	790.23	790.15	790.07	789.97	789.86	789.76	789.65	789.54
Field Splice No. 4	789.63	789.74	789.84	789.94	790.02	790.11	790.18	790.26	790.33	790.40	790.47	790.55	790.62	790.61	790.53	790.45	790.37	790.28	790.20	790.12	790.03	789.93	789.82	789.71	789.60	789.48
Field Splice No. 5	789.57	789.66	789.75	789.84	789.91	789.99	790.05	790.11	790.17	790.23	790.29	790.35	790.41	790.40	790.30	790.21	790.11	790.02	789.92	789.83	789.73	789.62	789.49	789.37	789.25	789.12
℄ Brg. Pier 3	789.51	789.59	789.68	789.77	789.83	789.91	789.97	790.03	790.09	790.14	790.20	790.25	790.31	790.29	790.20	790.10	790.00	789.91	789.81	789.71	789.61	789.49	789.37	789.24	789.11	788.98
Field Splice No. 6	789.43	789.51	789.59	789.68	789.74	789.81	789.87	789.92	789.98	790.03	790.08	790.14	790.19	790.17	790.07	789.97	789.87	789.77	789.66	789.56	789.46	789.34	789.21	789.08	788.95	788.82
℄ Brg. E. Abut.	789.22	789.29	789.36	789.44	789.50	789.56	789.61	789.65	789.70	789.74	789.78	789.83	789.87	789.84	789.73	789.62	789.51	789.40	789.29	789.18	789.07	788.94	788.80	788.66	788.52	788.38



SECTION A-A *Varies 2" Min.



Sheet B32 of 56

REVISIONS	
NAME	DATE

F.A.P. ROUTE 307 ILLINOIS ROUTE 64
 (NORTH AVENUE)
 OVER E.J.&E. AND U.P. R.R.
 EB FRAMING PLAN
 STAGES I & II
 STRUCTURE NUMBER 022-0190
 FAP 307 SECTION 130 R-2
 DUPAGE COUNTY
 STA. 3357+81.21

SCALE: None
 DATE: NOVEMBER 1, 2011
 DRAWN BY: MRK
 CHECKED BY: MJP