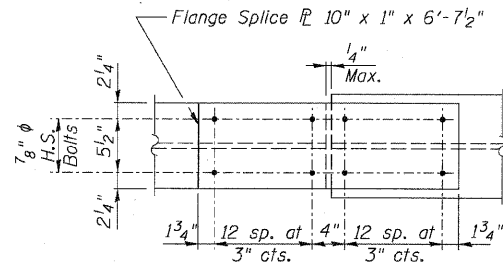


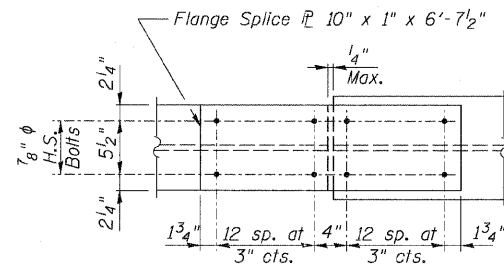
STATE OF ILLINOIS
 DEPARTMENT OF TRANSPORTATION

F.A.P. RTE.	SECTION	COUNTY	TOTAL SHEETS	SHEET NO.
307	130 R-2	DUPAGE, KANE	647	477
STA. 3356+37.74		TO STA. 3359+24.72		
FED. ROAD DIST. NO.		ILLINOIS FED. AID PROJECT		

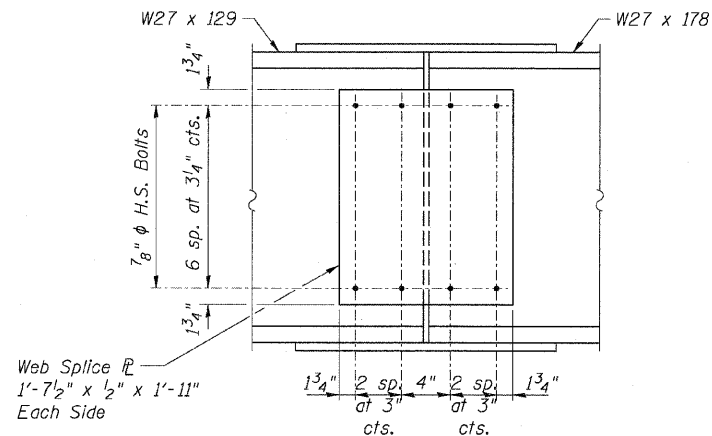
62410



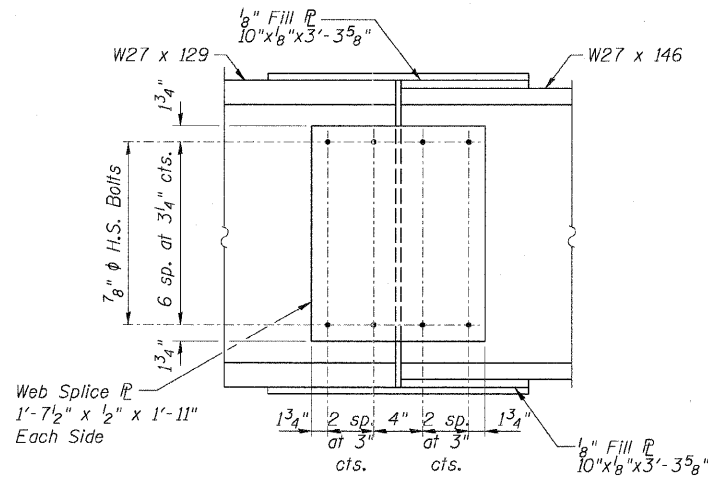
TOP FLANGE DETAILS



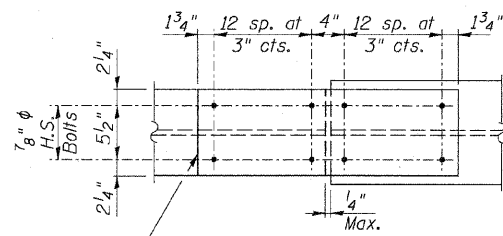
TOP FLANGE DETAILS



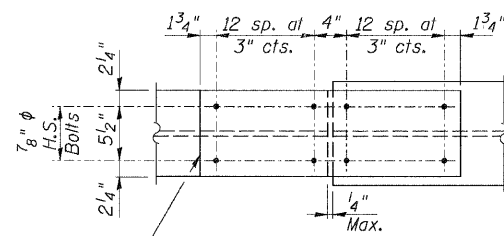
WEB DETAILS



WEB DETAILS



BOTTOM FLANGE DETAILS



BOTTOM FLANGE DETAILS

FIELD SPLICE DETAILS

For No's 3 & 4
 (52 Required)

FIELD SPLICE DETAILS

For No's 1, 2, 5 & 6
 (104 Required)

NOTES:

- All Bolts shall be ASTM A325.
- All splice material shall conform to the requirements of AASHTO M270 Grade 50 and the supplemental Requirements for Notch Toughness, Zone 2 (NTR). Fill plates are not required to meet NTR.

Sheet B34 of 55

REVISIONS		F.A.P. ROUTE 307 ILLINOIS ROUTE 64 (NORTH AVENUE) OVER E.J.&E. AND U.P. R.R. FIELD SPLICE DETAILS
NAME	DATE	
		STRUCTURE NUMBER 022-0190 FAP 307 SECTION 130 R-2 DUPAGE COUNTY STA. 3357+81.21
SCALE: None		DRAWN BY: MRK
DATE: MAY 13, 2011		CHECKED BY: MJP

