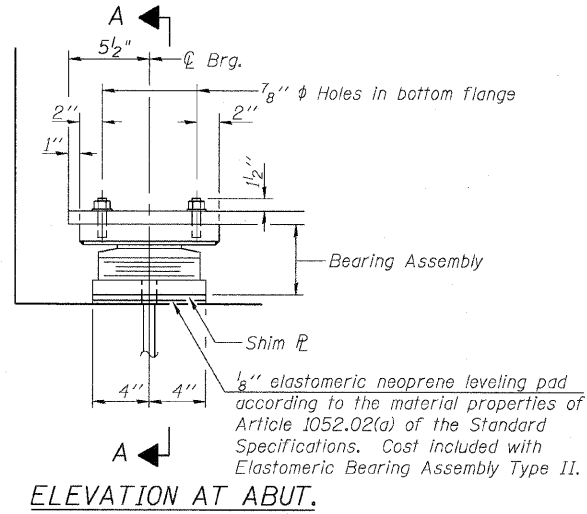


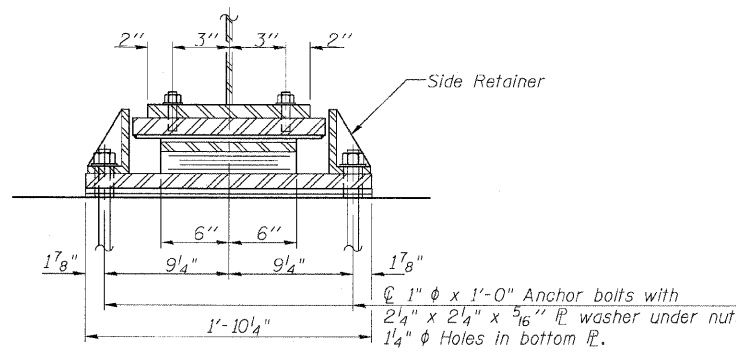
STATE OF ILLINOIS
 DEPARTMENT OF TRANSPORTATION

| F.A.P. RTE. | SECTION | COUNTY | TOTAL SHEETS | SHEET NO. |
|---------------------|---------|---------------------------|--------------|-----------|
| 307 | 130 R-2 | DUPAGE, KANE | 647 | 478 |
| STA. 3356+37.74 | | TO STA. 3359+24.72 | | |
| FED. ROAD DIST. NO. | | ILLINOIS FED. AID PROJECT | | |

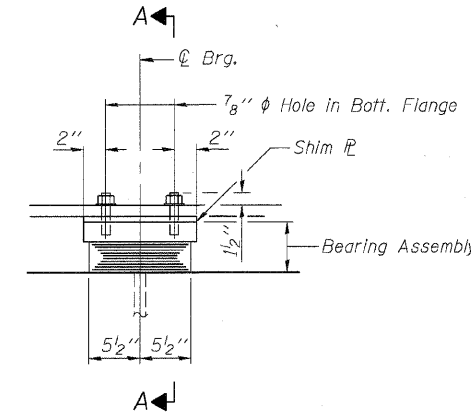
62410



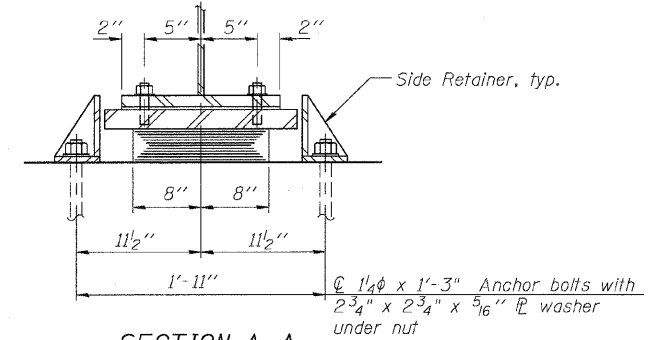
ELEVATION AT ABUT.



SECTION A-A



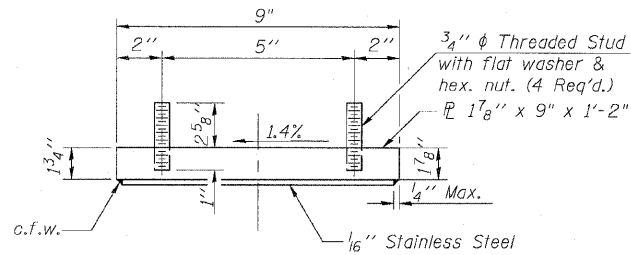
ELEVATION AT PIERS 1 AND 3



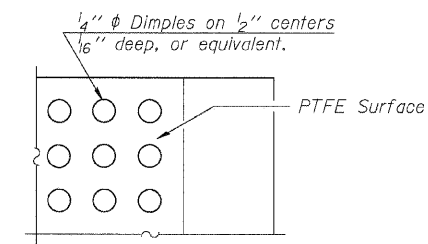
SECTION A-A

TYPE II ELASTOMERIC EXP. BRG.

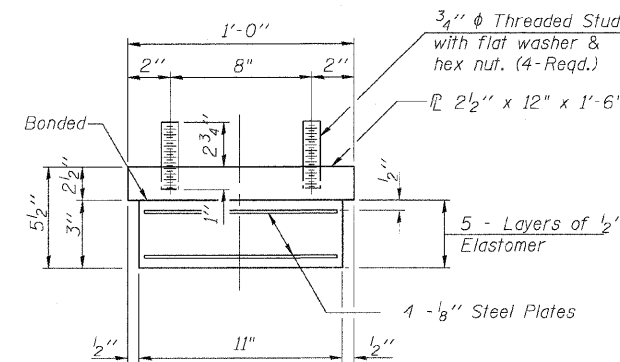
TYPE I ELASTOMERIC EXP. BRG.



TOP BEARING ASSEMBLY



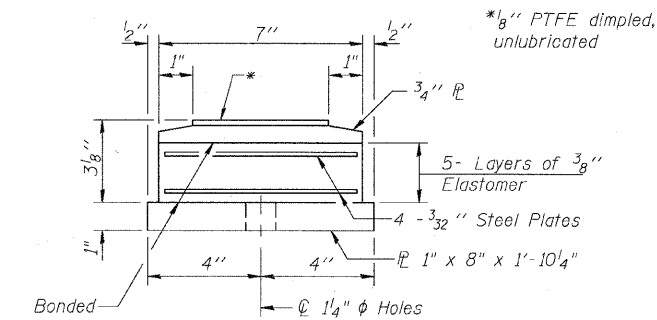
PLAN-PTFE SURFACE



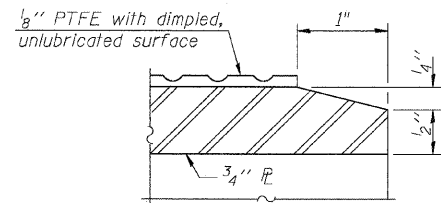
BEARING ASSEMBLY

Notes:
 Anchor bolts shall be ASTM F1554 all-thread (or an Engineer-approved alternate material) of the grade(s) and diameter(s) specified. ASTM A307 Grade C anchor bolts may be used in lieu of ASTM F1554 Grade 36 (Fy=36ksi). The corresponding specified grade of AASHTO M314 anchor bolts may be used in lieu of ASTM F1554.
 Anchor bolts for Type II bearings shall be placed in holes drilled in the concrete through holes in the bottom bearing plate after members are in place. Side retainers shall be placed after bolts are installed.
 Drilled and set anchor bolts shall be installed according to Article 521.06 of the Standard Specifications.
 Side retainers and other steel members required for the bearing assembly shall be included in the cost of Elastomeric Bearing Assembly, Type I or Type II.
 The 1/8" PTFE sheet shall be bonded directly to the top steel plate with a two-component, medium viscosity epoxy resin, conforming to the requirements of the Federal Specification MMM-A-134, Type I. The bond agent shall be applied on the full area of the contact surfaces.
 Bonding of 1/8" PTFE sheet during vulcanizing process will be permitted provided the process and method of adjusting assembly height is approved by the Engineer.
 The structural steel plates of the Bearing Assembly shall conform to the requirements of AASHTO M 270 Grade 50.
 Two 1/8" in. adjusting shims shall be provided for each bearing in addition to all other plates or shims and placed as shown on bearing details.

Notes:
 Shim plates shall not be placed under Bearing Assembly.



BOTTOM BEARING ASSEMBLY



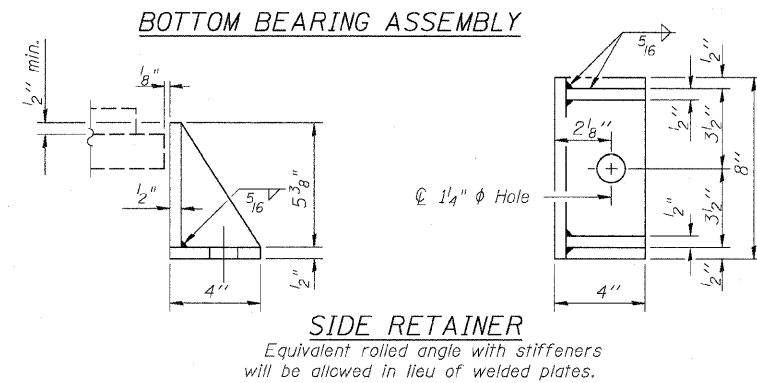
SECTION THRU PTFE

Note:
 Shim plates shall not be placed under Bearing Assembly.

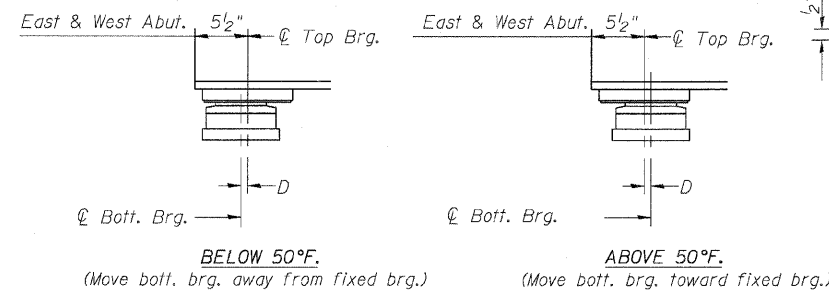
SIDE RETAINER

Equivalent rolled angle with stiffeners will be allowed in lieu of welded plates.

TYPE I ELASTOMERIC EXP. BRG.
@ PIERS 1 & 3
 (52 Required)



TYPE II ELASTOMERIC EXP. BRG.
@ EAST & WEST ABUTMENTS
 (52 Required)



SETTING ANCHOR BOLTS AT EXP. BRG.

D = 1/8" per each 100' of expansion for every 15° temp. change from the normal temp. of 50°F.

BILL OF MATERIAL

| Item | Unit | Total |
|--------------------------------------|------|-------|
| Elastomeric Bearing Assembly Type I | Each | 52 |
| Elastomeric Bearing Assembly Type II | Each | 52 |
| Anchor Bolts, 1" φ | Each | 104 |
| Anchor Bolts, 1 1/4" φ | Each | 104 |

Sheet B35 of 56

| REVISIONS | |
|-----------|------|
| NAME | DATE |
| | |
| | |
| | |
| | |
| | |
| | |
| | |
| | |
| | |

F.A.P. ROUTE 307 ILLINOIS ROUTE 64 (NORTH AVENUE) OVER E.J.&E. AND U.P. R.R. ELASTOMERIC EXPANSION BEARINGS

STRUCTURE NUMBER 022-0190
 FAP 307 SECTION 130 R-2
 DUPAGE COUNTY
 STA. 3357+81.21

SCALE: None
 DATE: MAY 13, 2011
 DRAWN BY: MRK
 CHECKED BY: MJP

