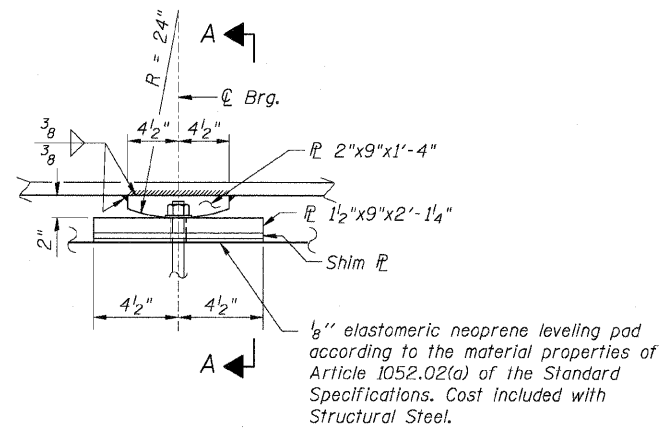


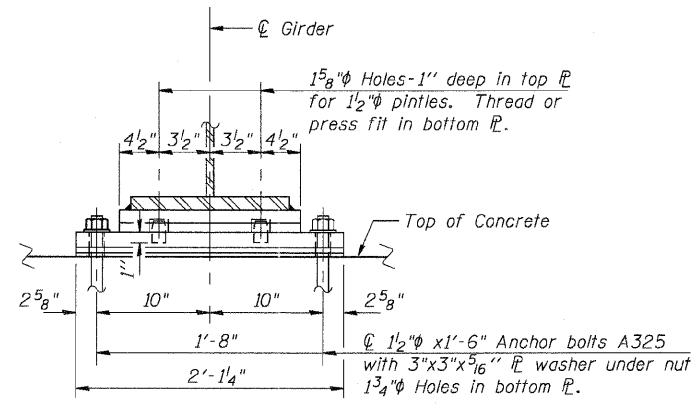
STATE OF ILLINOIS
 DEPARTMENT OF TRANSPORTATION

F.A.P. RTE.	SECTION	COUNTY	TOTAL SHEETS	SHEET NO.
307	130 R-2	DUPAGE, KANE	647	479
STA. 3356+37.74		TO STA. 3359+24.72		
FED. ROAD DIST. NO.	ILLINOIS	FED. AID PROJECT		

62410

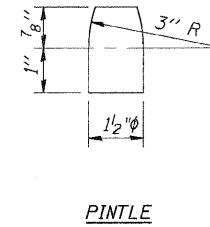


ELEVATION AT PIER



SECTION A-A

FIXED BEARING AT PIER 2
 (26 Required)



BILL OF MATERIAL

Item	Unit	Total
Anchor Bolts, 1 1/2" φ	Each	52

NOTES:

- Anchor bolts at fixed bearings may be built into the masonry.
- Furnishing and installing Fixed Bearings is included with "Furnishing and Erecting Structural Steel".
- The structural steel plates of the Bearing Assembly shall conform to the requirements of AASHTO M 270 Grade 50.
- Two 1/8 in. adjusting shims shall be provided for each bearing in addition to all other plates or shims and placed as shown on bearing details.

Sheet B36 of 56



REVISIONS	
NAME	DATE

F.A.P. ROUTE 307 ILLINOIS ROUTE 64
 (NORTH AVENUE)
 OVER E.J.&E. AND U.P. R.R.
 FIXED BEARING DETAILS
 STRUCTURE NUMBER 022-0190
 FAP 307 SECTION 130 R-2
 DUPAGE COUNTY
 STA. 3357+81.21

SCALE: None
 DATE: MAY 13, 2011
 DRAWN BY: MRK
 CHECKED BY: MJP