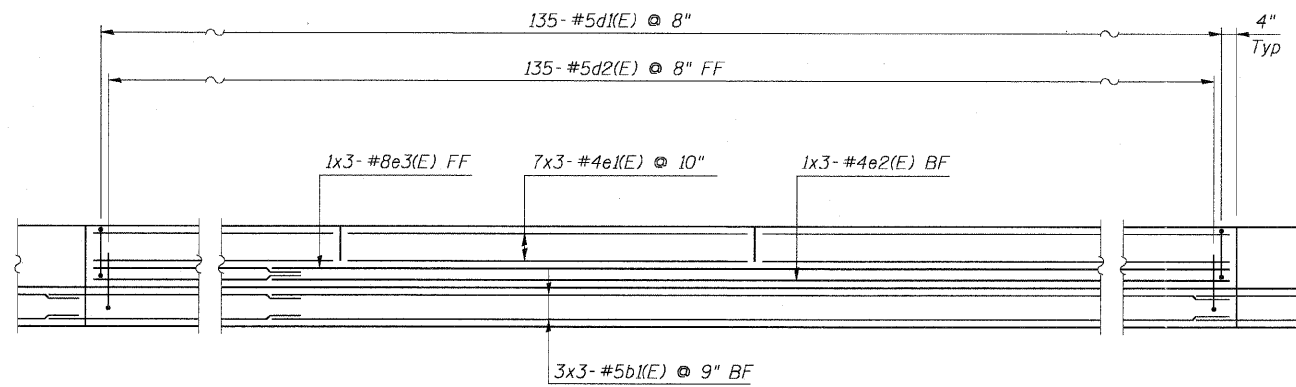


STATE OF ILLINOIS
 DEPARTMENT OF TRANSPORTATION

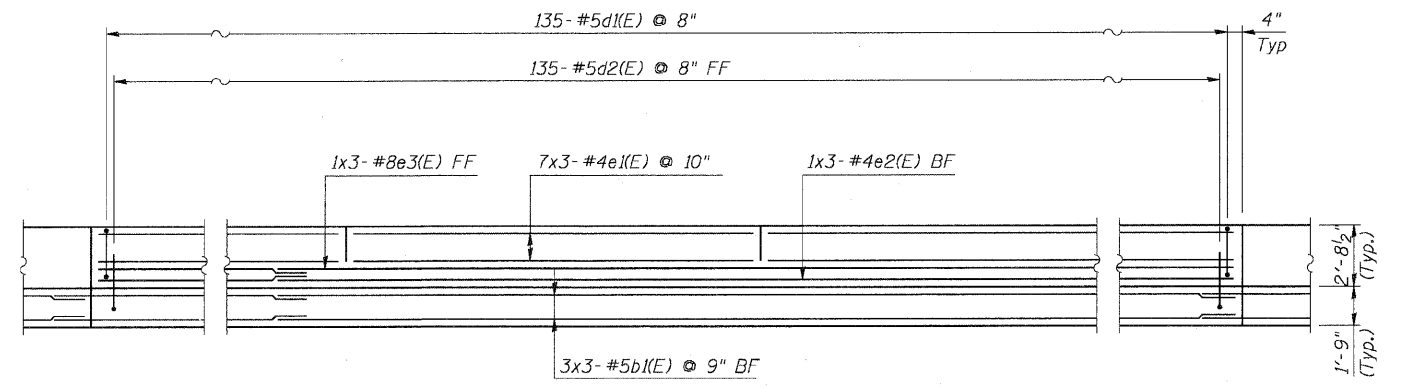
F.A.P. RTE.	SECTION	COUNTY	TOTAL SHEETS	SHEET NO.
307	130 R-2	DUPAGE, KANE	647	505
STA. 3356+37.74 TO STA. 3359+24.72				
FED. ROAD DIST. NO.		ILLINOIS FED. AID PROJECT		

62410



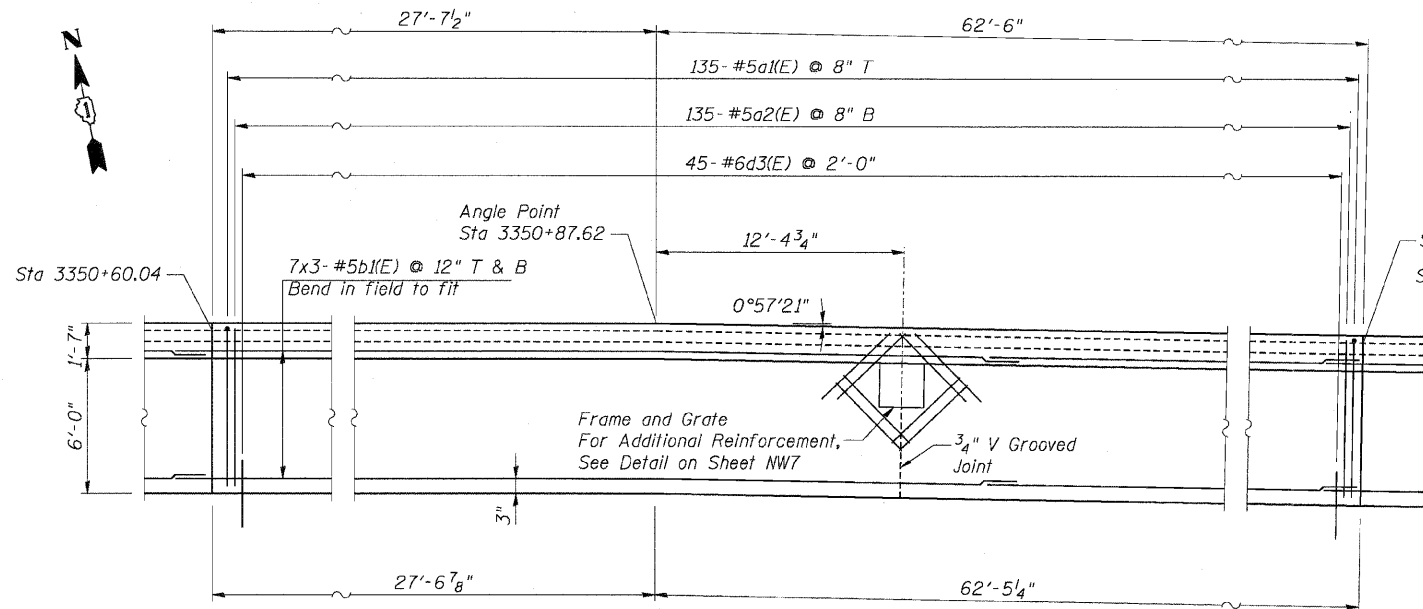
MOMENT SLAB ELEVATION

Unit 2



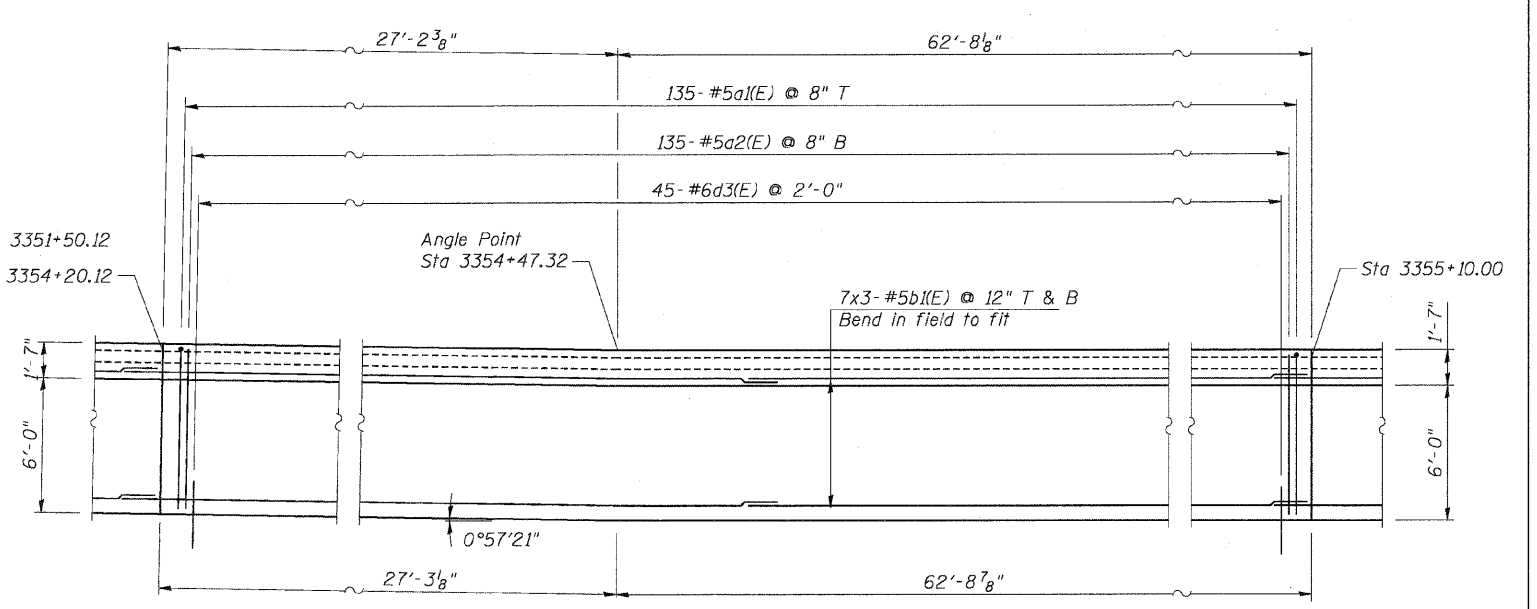
MOMENT SLAB ELEVATION

Unit 6



MOMENT SLAB PLAN

Unit 2



MOMENT SLAB PLAN

Unit 6

NOTES:

1. For General Notes, see Sheet NW2.
2. For Bar Bending Diagrams, see Sheet NW9.
3. For Slab Elevations, see Roadway Plans.
4. For Barrier Joint Details, See Sheet NW9.
5. Minimum lap lengths for horizontal bars shall be as follows:
 for #5b bars - 3'-8"
 for #5e bars - 3'-3"
 for #8e bars - 6'-9"
6. Bend longitudinal bars in field to fit.
7. Bars indicated thus 7x2-#5 etc. indicates 7 lines of bars with 2 lengths per line.
8. Provide DX Type Deflection Fittings at all 1/2" cork filled expansion joints in Concrete Barrier Rail. See Sheet E-11 for details.

Sheet NW6 of 9

REVISIONS	
NAME	DATE

F.A.P. ROUTE 307 ILLINOIS ROUTE 64
 (NORTH AVENUE)
 OVER E.J.&E. AND U.P. R.R.
 MOMENT SLAB DETAILS

STRUCTURE NUMBER 022-W027
 FAP 307 SECTION 130 R-2
 DUPAGE COUNTY
 STA. 3349+70.04 TO 3356+08.49
 SCALE: None
 DATE: MAY 13, 2011

DRAWN BY: MRK
 CHECKED BY: MJP

