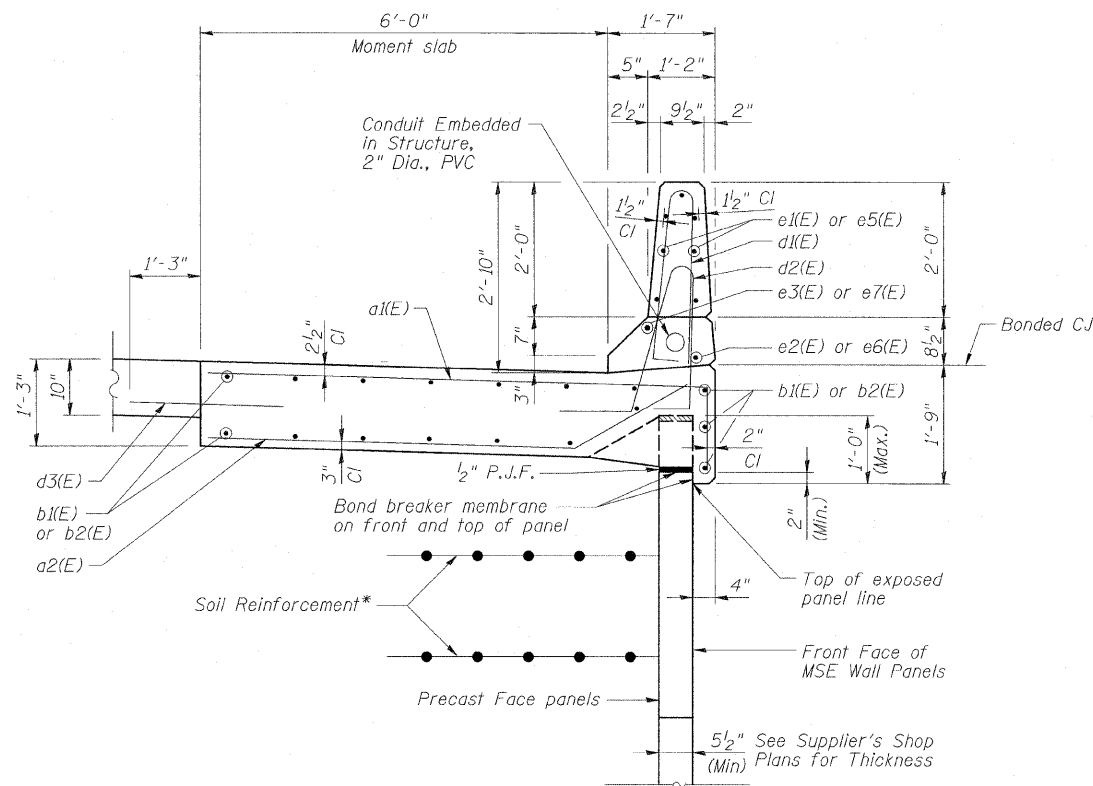


STATE OF ILLINOIS
 DEPARTMENT OF TRANSPORTATION

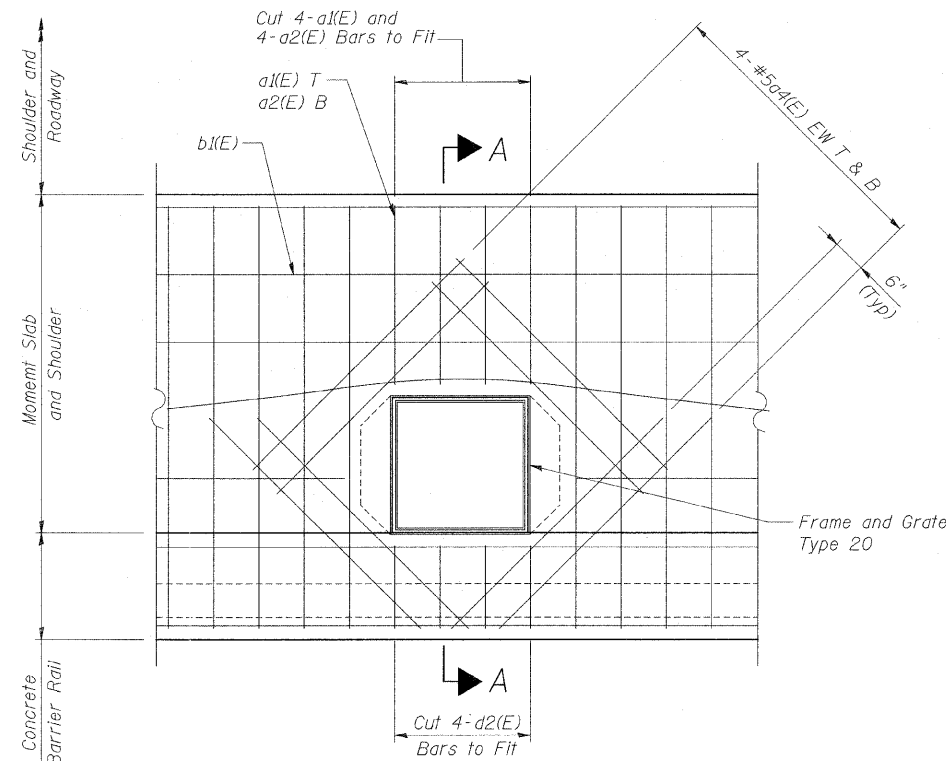
F.A.P. RTE.	SECTION	COUNTY	TOTAL SHEETS	SHEET NO.
307	130 R-2	DUPAGE,KANE	647	506
STA. 3356+37.74 TO STA. 3359+24.72				
FED. ROAD DIST. NO. ILLINOIS FED. AID PROJECT				

62410



**TYPICAL CROSS SECTION
 THRU MOMENT SLAB & BARRIER**

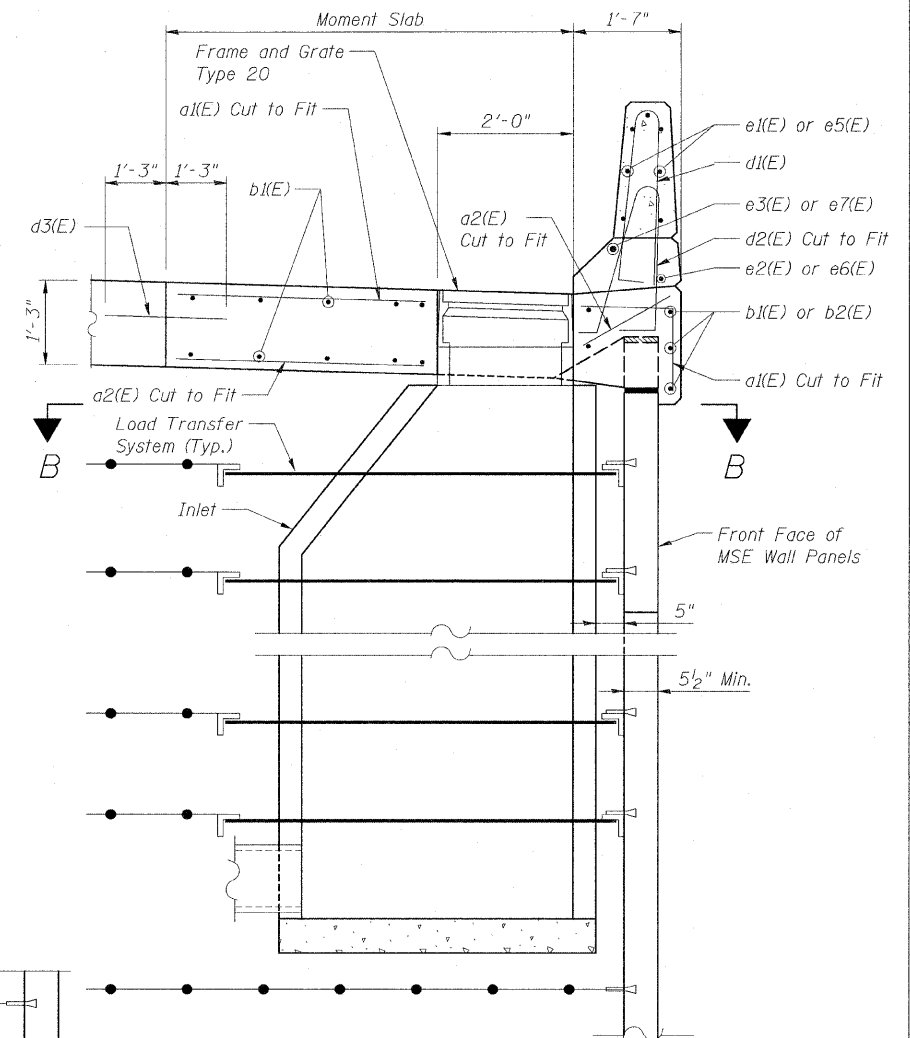
* The M.S.E. Wall supplier's internal stability design shall account for the anchorage slab's bearing pressure surcharge of 0.24 ksf and horizontal sliding force of 0.5 kips/ft. of wall.



**DETAIL 1-MOMENT SLAB AND
 BARRIER AT CATCH BASIN**

NOTES:

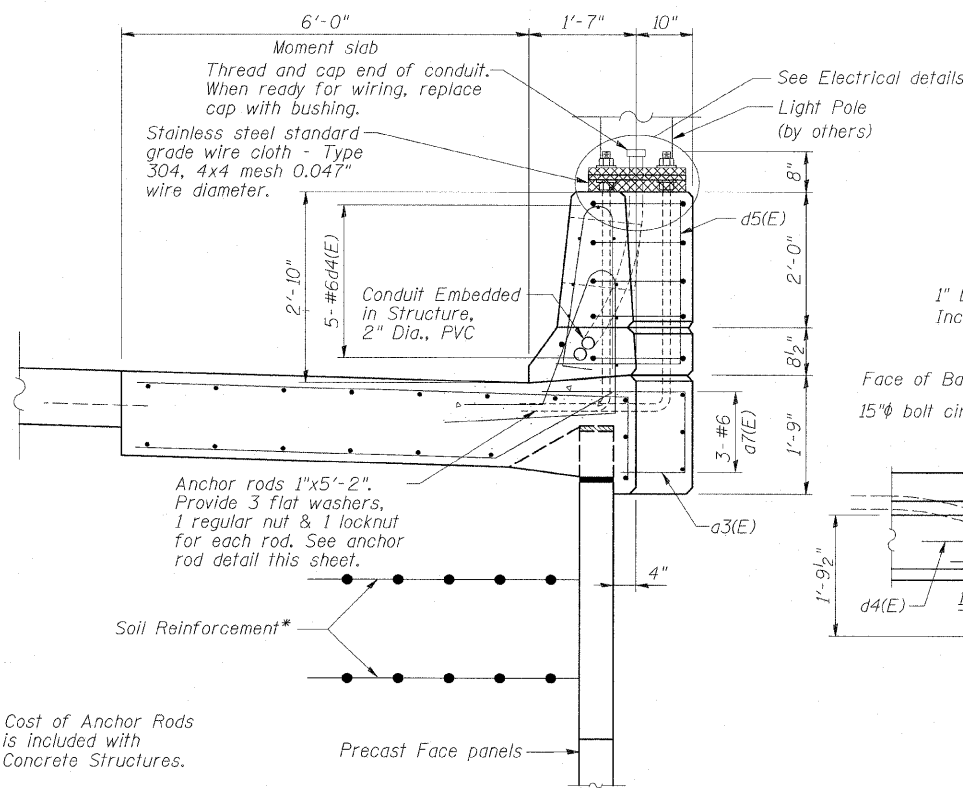
1. Provide minimum 2" clearance between reinforcing bars and Frame and Grate Type 20.



SECTION A-A
 Units 2, 4 and 7

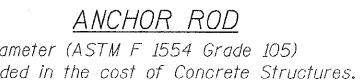
NOTES:

1. For General Notes, see Sheet NW2.
2. For Bar Bending Diagrams, see Sheet NW9.



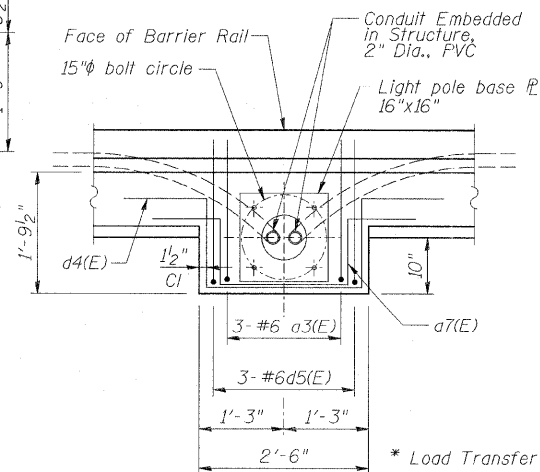
**SECTION
 LIGHT POLE MOUNTED
 ON CONCRETE BARRIER RAIL**

Note: Cost of Anchor Rods is included with Concrete Structures.



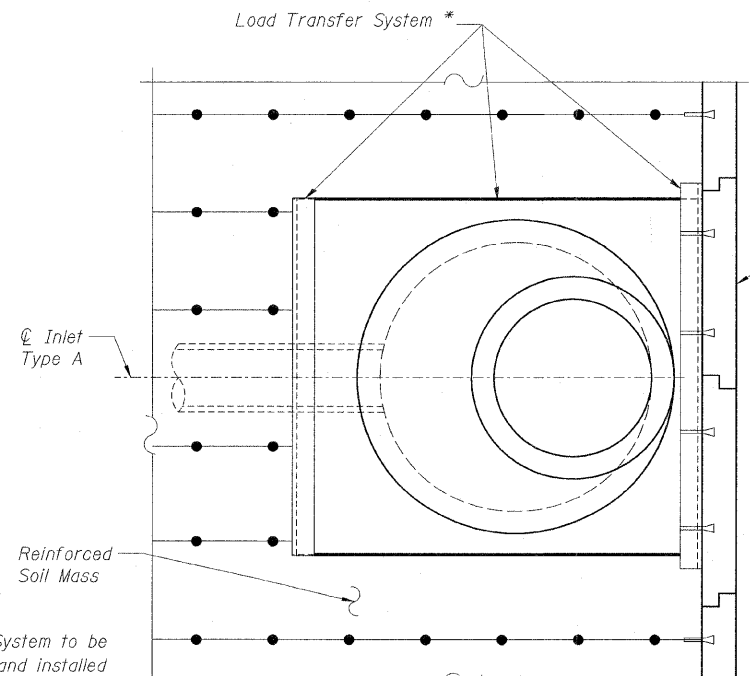
ANCHOR ROD

1" Diameter (ASTM F 1554 Grade 105)
 Included in the cost of Concrete Structures.



PLAN

* Load Transfer System to be designed, detailed and installed by the MSE Wall Manufacturer. Submit plans to the Engineer for review and approval.



SECTION B-B

REVISIONS	
NAME	DATE

F.A.P. ROUTE 307 ILLINOIS ROUTE 64
 (NORTH AVENUE)
 OVER E.J.&E. AND U.P. R.R.
MOMENT SLAB DETAILS
 AT DRAINAGE STRUCTURE
 STRUCTURE NUMBER 022-W027
 FAP 307 SECTION 130 R-2
 DUPAGE COUNTY
 STA. 3349+70.04 TO 3356+08.49
 SCALE: None
 DATE: NOVEMBER 1, 2011
 DRAWN BY: MRK
 CHECKED BY: MJP

Sheet NW7 of 9

