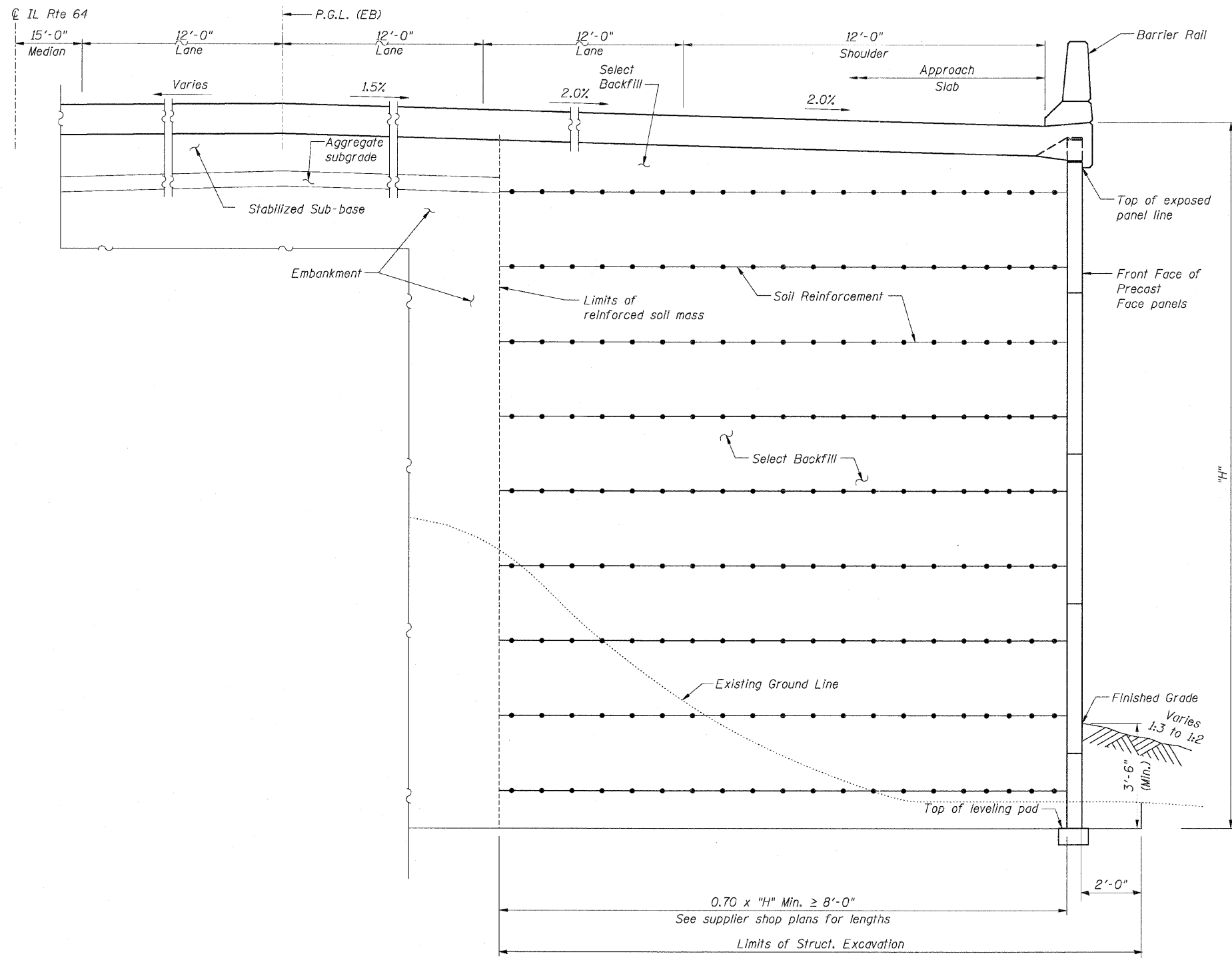


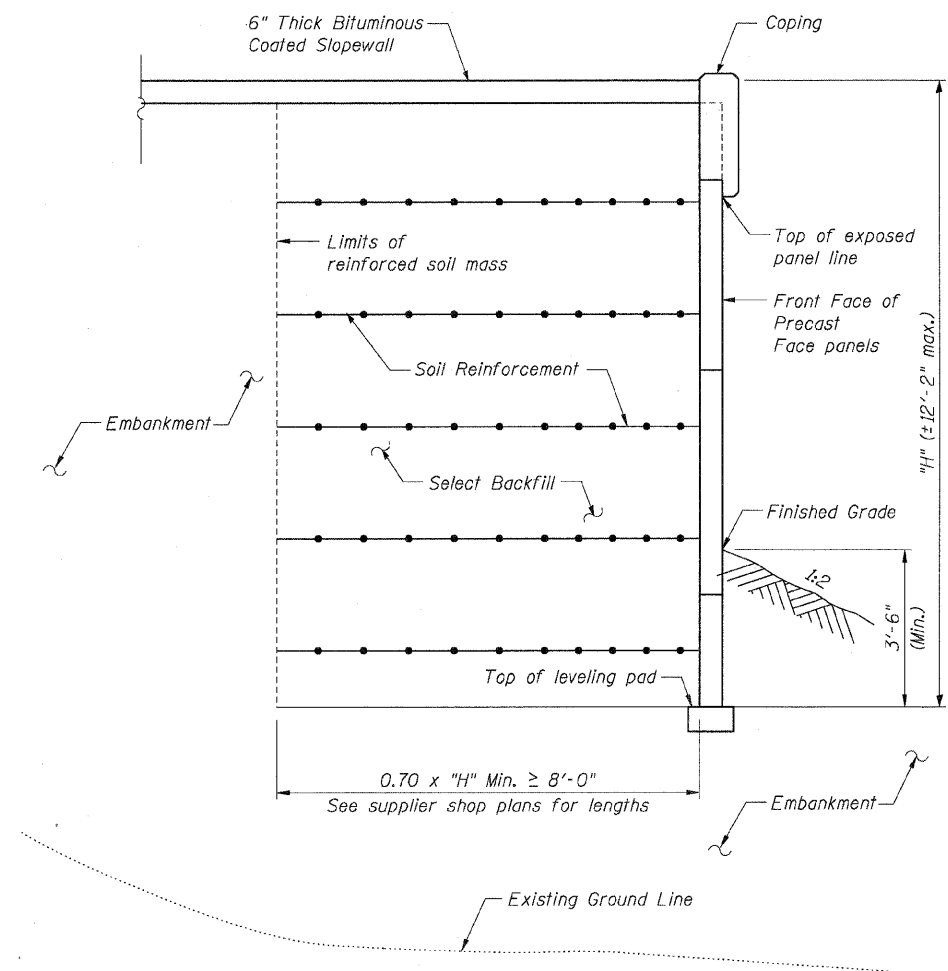
STATE OF ILLINOIS  
 DEPARTMENT OF TRANSPORTATION

F.A.P. RTE.	SECTION	COUNTY	TOTAL SHEETS	SHEET NO.
307	130 R-2	DUPAGE, KANE	647	511
STA. 3356+37.74		TO STA. 3359+24.72		
FED. ROAD DIST. NO.		ILLINOIS FED. AID PROJECT		

62410



**TYPICAL SECTION**  
 Sta. 3358+91.85 to Sta. 3359+21.39  
 (Looking Downstation)



**TYPICAL SECTION**  
 Sta. 3358+66.25 to Sta. 3358+91.85  
 (Looking Downstation)

- NOTES:**
1. For General Notes, see Sheet NE2.
  2. For Coping Details, see Sheet NE7.
  3. For Approach Slab Details, see Bridge 022-0190 plans.

Sheet NE3 of 8

REVISIONS		NAME	DATE
NO.	DESCRIPTION		

F.A.P. ROUTE 307 ILLINOIS ROUTE 64  
 (NORTH AVENUE)  
 OVER E.J.&E. AND U.P. R.R.  
 TYPICAL SECTIONS

STRUCTURE NUMBER 022-W028  
 FAP 307 SECTION 130 R-2  
 DUPAGE COUNTY  
 STA. 3358+66.25 TO 3366+48.00  
 SCALE: None DRAWN BY: MRK  
 DATE: MAY 13, 2011 CHECKED BY: MJP

