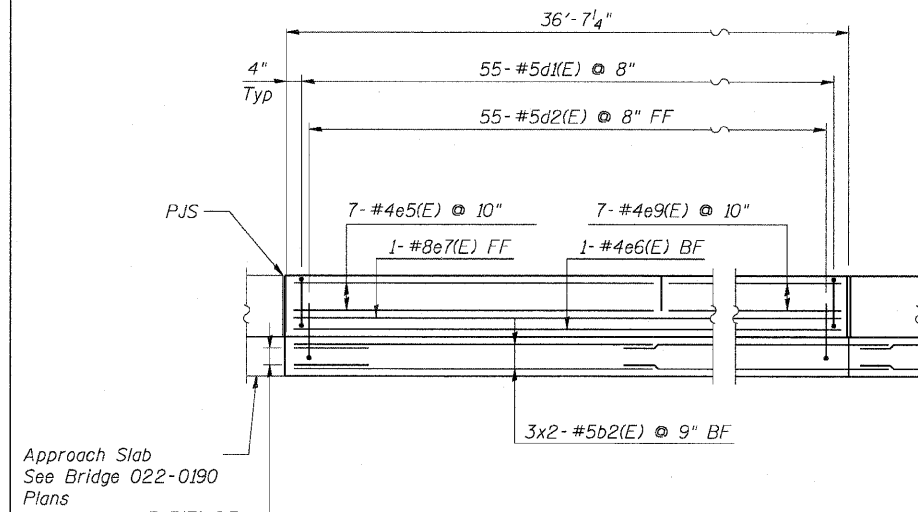


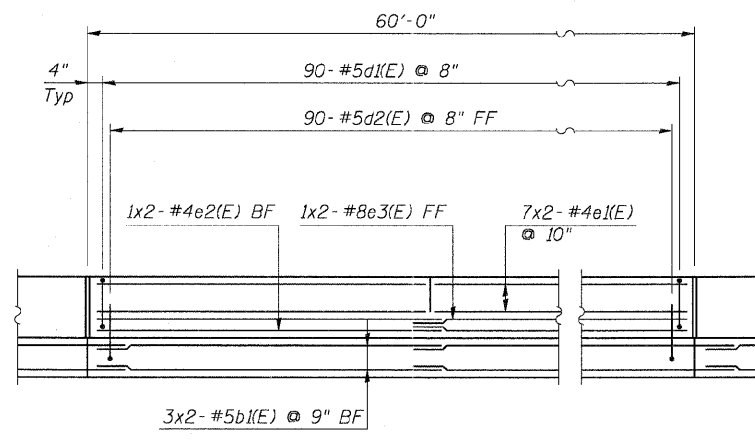
STATE OF ILLINOIS  
 DEPARTMENT OF TRANSPORTATION

F.A.P. RTE.	SECTION	COUNTY	TOTAL SHEETS	SHEET NO.
307	130 R-2	DUPAGE, KANE	647	513
STA. 3356+37.74 TO STA. 3359+24.72		ILLINOIS FED. AID PROJECT		

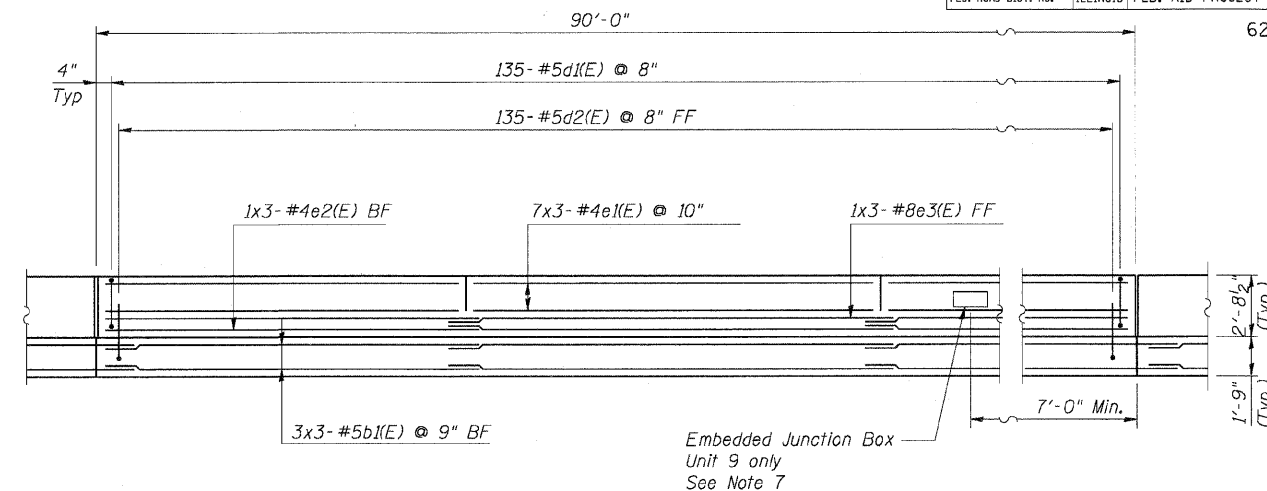
62410



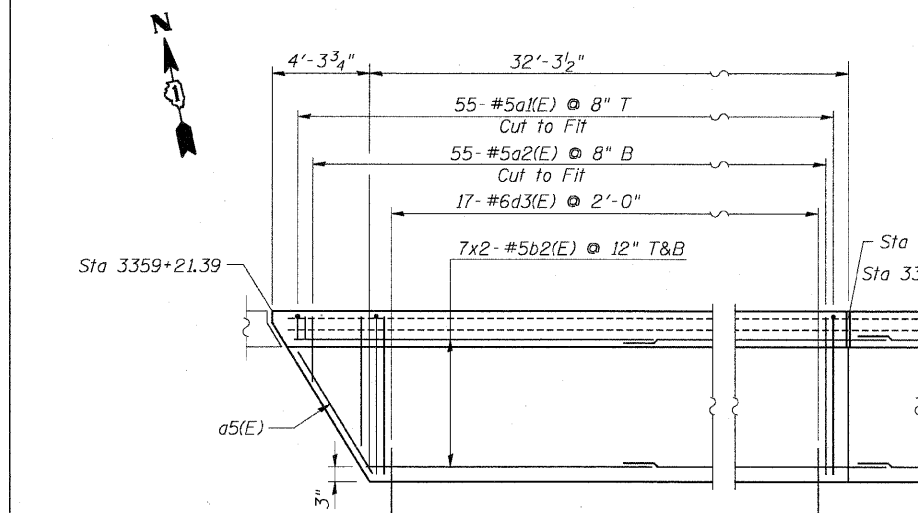
**MOMENT SLAB ELEVATION**  
 Unit 1



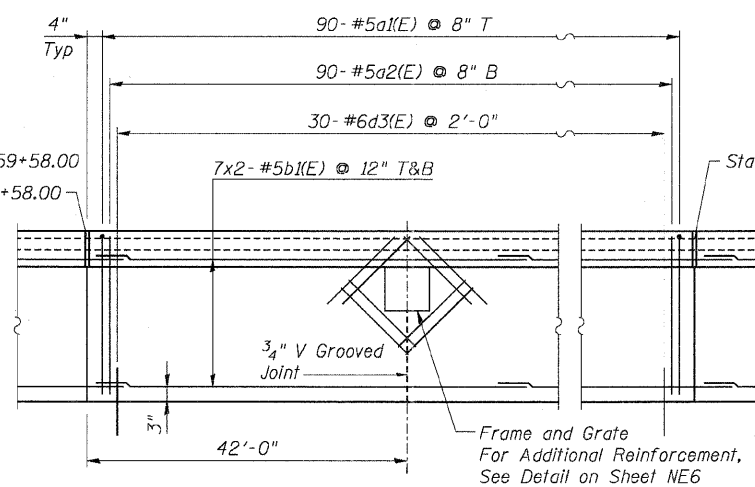
**MOMENT SLAB ELEVATION**  
 Unit 2



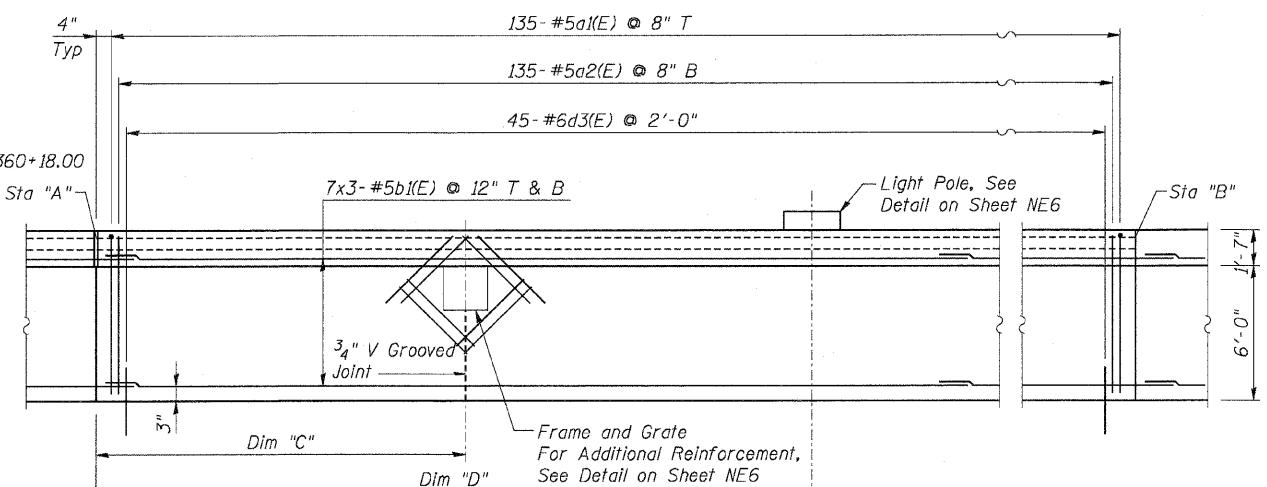
**MOMENT SLAB ELEVATION**  
 Units 3 Thru 9



**MOMENT SLAB PLAN**  
 Unit 1



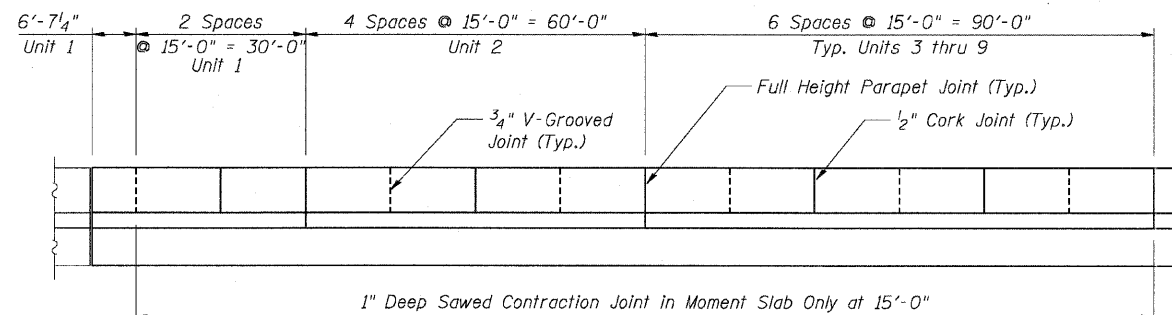
**MOMENT SLAB PLAN**  
 Unit 2



**MOMENT SLAB PLAN**  
 Units 3 Thru 9

**NOTES:**

- For General Notes, see Sheet NE2.
- For Bar Bending Diagrams, see Sheet NE8.
- For Slab Elevations, see Roadway Plans.
- For Barrier Joint Details, See Sheet NE8.
- Minimum lap lengths for horizontal bars shall be as follows:  
 for #5b bars - 3'-8"  
 for #5e bars - 3'-3"  
 for #8e bars - 6'-9"
- Bars indicated thus 7x2-#5 etc. indicates 7 lines of bars with 2 lengths per line.
- Embedded Junction Box: Cut d1(E) and d2(E) bars to fit. Provide 2 additional d1(E) and d2(E) bars on each side of box alternate between d1(E) and d2(E) bars. Shift horizontal bars to clear box. Provide minimum 1 1/2" clearance to bars. See Sheet E-17 for additional details.
- Provide DX Type Deflection Fittings at all 1/2" cork filled expansion joints in Concrete Barrier Rail. See Sheet E-11 for details.



**PARAPET AND MOMENT SLAB JOINT LAYOUT**  
 See Note 4

Unit	Sta. "A"	Sta. "B"	Dim. "C"	Dim. "D"
3	3360+18.00	3361+08.00		
4	3361+08.00	3361+98.00		17'-0"
5	3361+98.00	3362+88.00	27'-0"	
6	3362+88.00	3363+78.00		77'-0"
7	3363+78.00	3364+68.00	72'-0"	
8	3364+68.00	3365+58.00		
9	3365+58.00	3366+48.00		47'-0"

REVISIONS	
NAME	DATE

F.A.P. ROUTE 307 ILLINOIS ROUTE 64  
 (NORTH AVENUE)  
 OVER E.J.&E. AND U.P. R.R.  
 MOMENT SLAB DETAILS

STRUCTURE NUMBER 022-W028  
 FAP 307 SECTION 130 R-2  
 DUPAGE COUNTY

STA. 3358+66.25 TO 3366+48.00

SCALE: None  
 DATE: MAY 13, 2011  
 DRAWN BY: MRK  
 CHECKED BY: MJM

