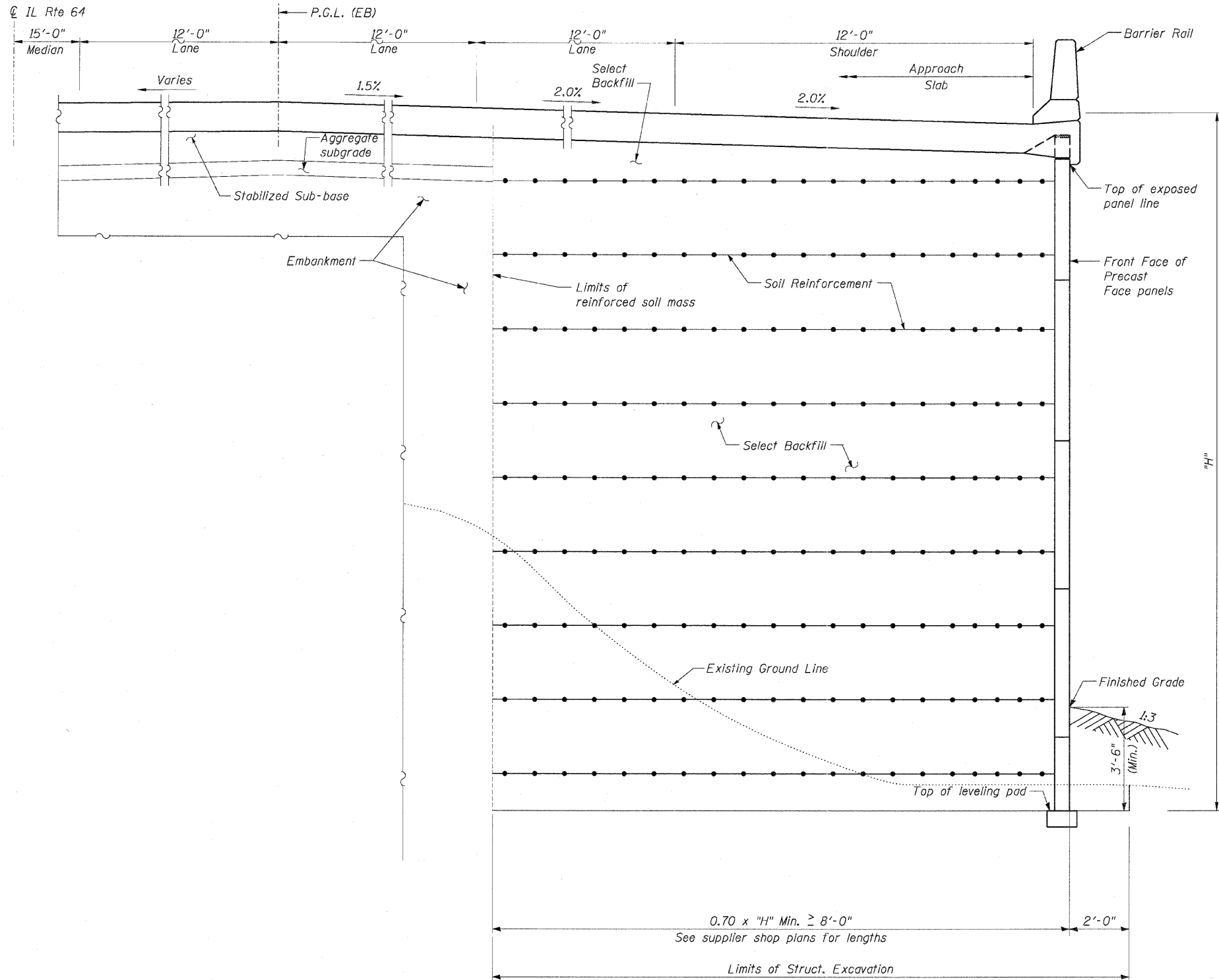


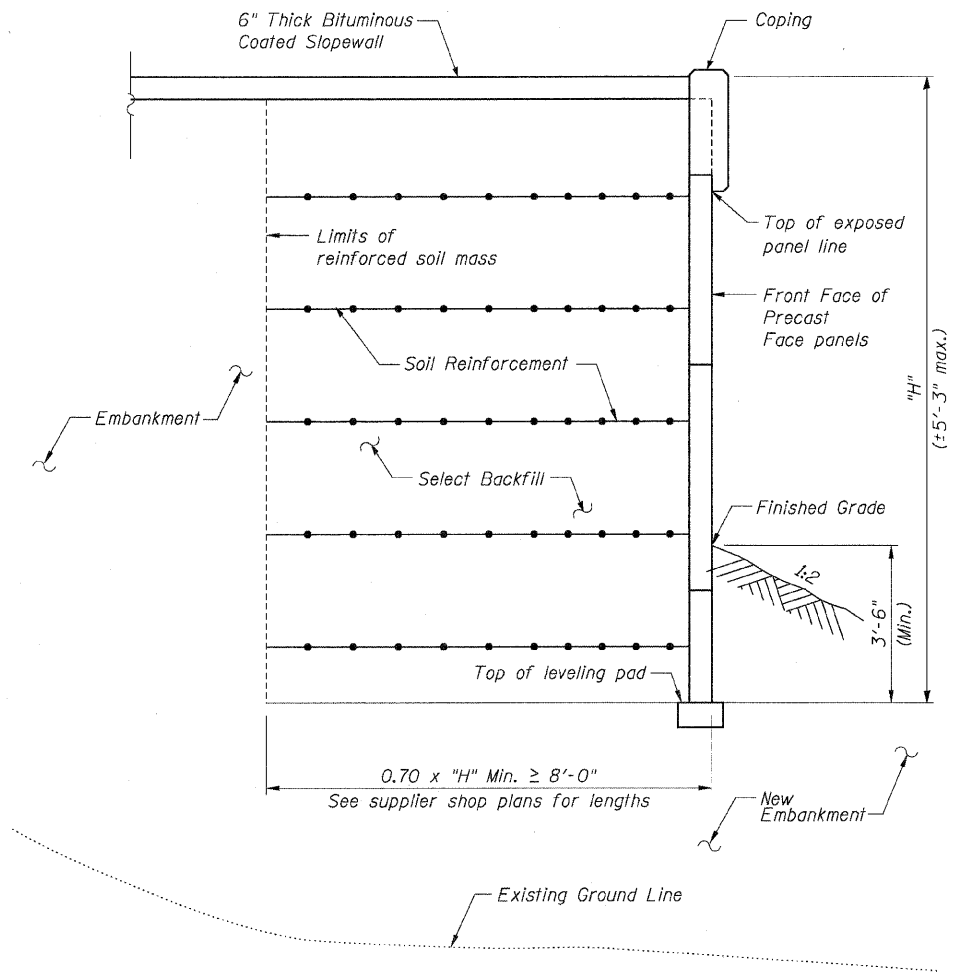
STATE OF ILLINOIS
 DEPARTMENT OF TRANSPORTATION

F.A.P. RTE.	SECTION	COUNTY	TOTAL SHEETS	SHEET NO.
307	130 R-2	DUPAGE, KANE	647	520
STA. 3356+37.74 TO STA. 3359+24.72				
FED. ROAD DIST. NO.			ILLINOIS FED. AID PROJECT	

62410



TYPICAL SECTION
 Sta. 3356+41.02 to Sta. 3356+70.59
 (Looking Upstation)



TYPICAL SECTION
 Sta. 3356+70.57 to Sta. 3356+80.01
 (Looking Upstation)

NOTES:

1. For General Notes, see Sheet SW2.
2. For Coping Details, see Sheet SW7.
3. For Approach Slab Details, see Bridge 022-0190 plans.

Sheet SW4 of 8

REVISIONS		NAME	DATE
NO.	DESCRIPTION		

F.A.P. ROUTE 307 ILLINOIS ROUTE 64
 (NORTH AVENUE)
 OVER E.J.&E. AND U.P. R.R.
 TYPICAL SECTIONS

STRUCTURE NUMBER 022-W029
 FAP 307 SECTION 130 R-2
 DUPAGE COUNTY
 STA. 3350+69.00 TO 3356+80.01

SCALE: None
 DATE: MAY 13, 2011

DRAWN BY: MRK
 CHECKED BY: MJP

