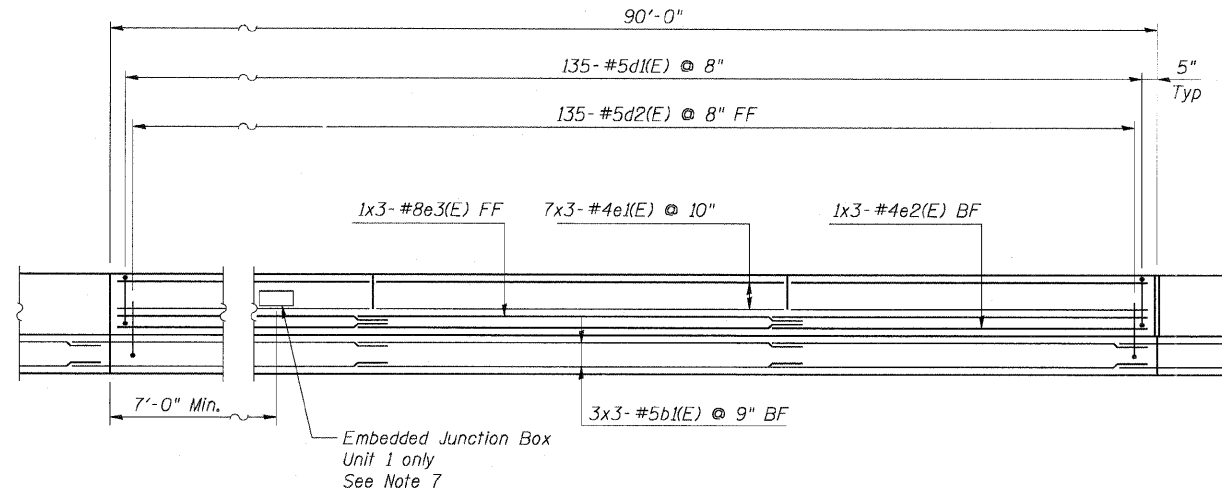


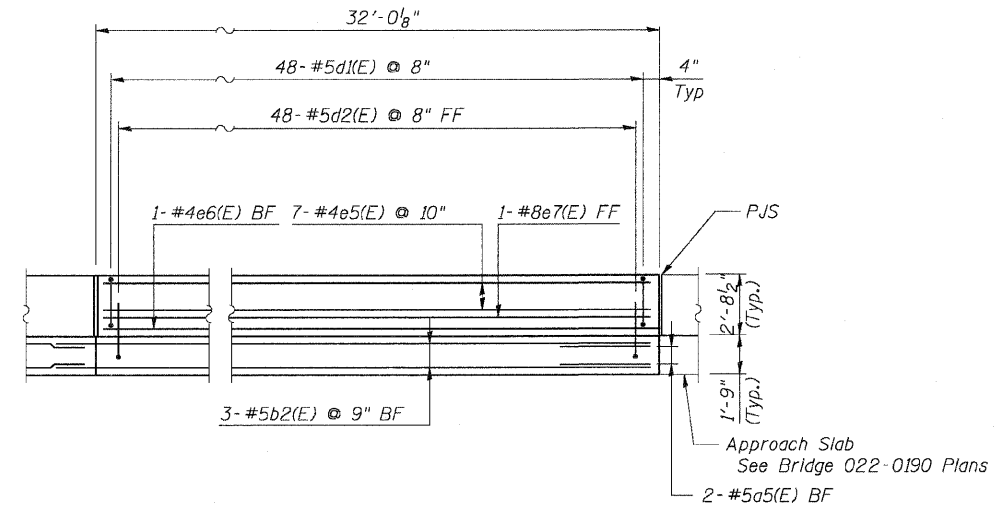
STATE OF ILLINOIS
 DEPARTMENT OF TRANSPORTATION

F.A.P. RTE.	SECTION	COUNTY	TOTAL SHEETS	SHEET NO.
307	130 R-2	DUPAGE, KANE	647	521
STA. 3356+37.74		TO STA. 3359+24.72		
FED. ROAD DIST. NO.		ILLINOIS FED. AID PROJECT		

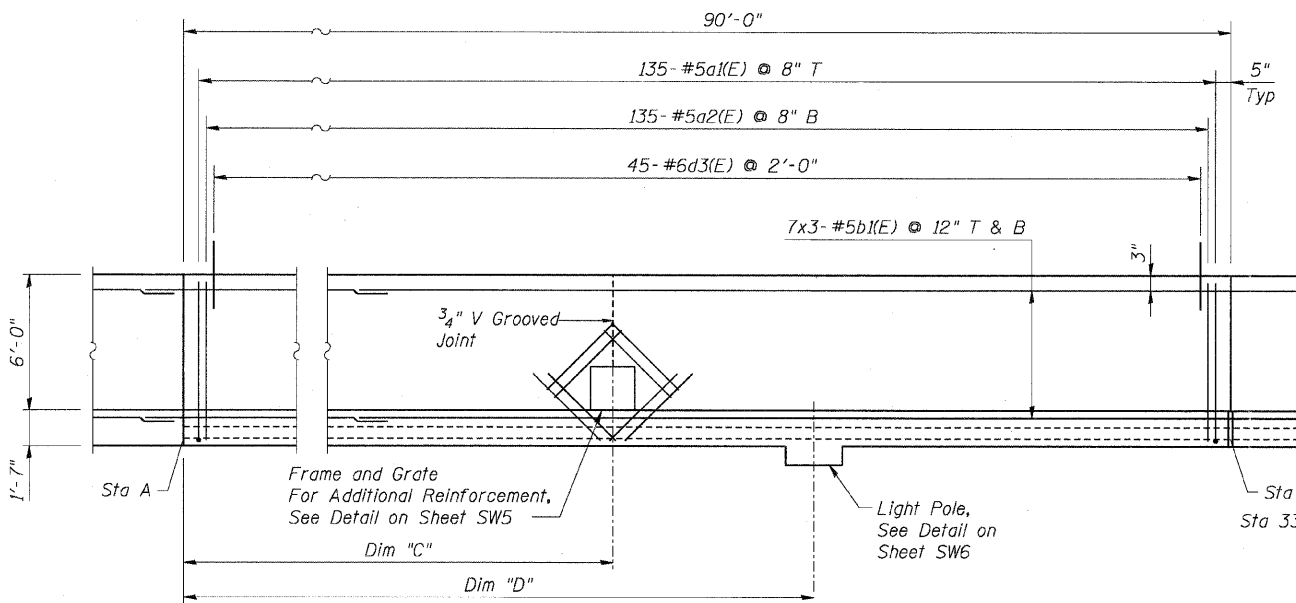
62410



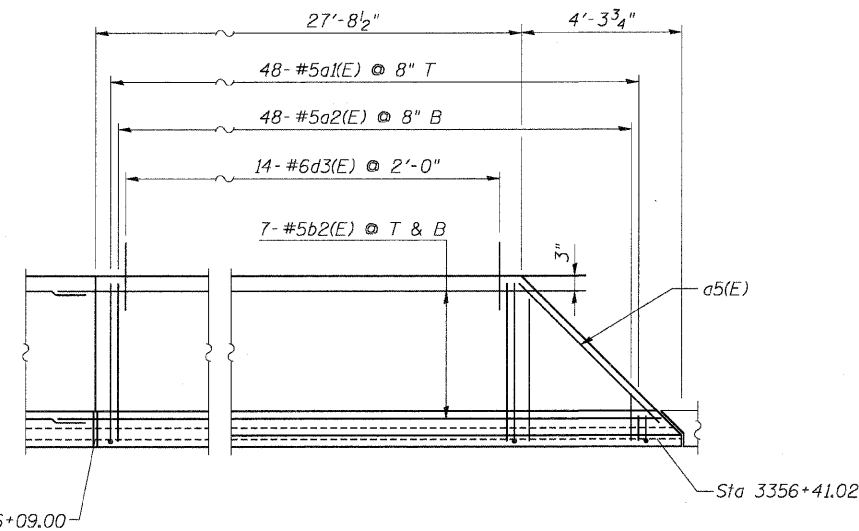
MOMENT SLAB ELEVATION
 Units 1 Thru 6



MOMENT SLAB ELEVATION
 Unit 7



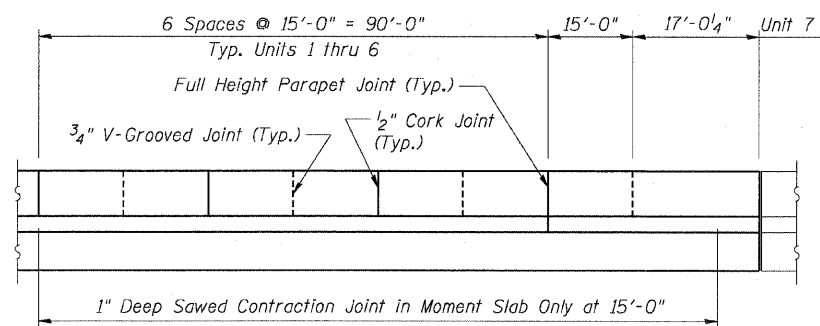
MOMENT SLAB PLAN
 Units 1 Thru 6



MOMENT SLAB PLAN
 Unit 7

NOTES:

- For General Notes, see Sheet SW2.
- For Bar Bending Diagrams, see Sheet SWB.
- For Slab Elevations, see Roadway Plans.
- For Barrier Joint Details, See Sheet SWB.
- Minimum lap lengths for horizontal bars shall be as follows:
 for #5b bars - 3'-8"
 for #5e bars - 3'-3"
 for #8e bars - 6'-9"
- Bars Indicated thus 7x2-#5 etc. Indicates 7 lines of bars with 2 lengths per line.
- Embedded Junction Box; Cut d1(E) and d2(E) bars to fit. Provide 2 additional d1(E) and d2(E) bars on each side of box alternate between d1(E) and d2(E) bars. Shift horizontal bars to clear box. Provide minimum 1/2" clearance to bars. See Sheet E-17 for additional details.
- Provide DX Type Deflection Fittings at all 1/2" cork filled expansion joints in Concrete Barrier Rail. See Sheet E-11 for details.



PARAPET AND MOMENT SLAB JOINT LAYOUT
 See Note 4

Unit	Sta. "A"	Sta. "B"	Dim. "C"	Dim. "D"
1	3350+69.00	3351+59.00	31'-0"	
2	3351+59.00	3352+49.00		6'-0"
3	3352+49.00	3353+39.00	51'-0"	
4	3353+39.00	3354+29.00		66'-0"
5	3354+29.00	3355+19.00		
6	3355+19.00	3356+09.00	31'-0"	

REVISIONS		F.A.P. ROUTE 307 ILLINOIS ROUTE 64 (NORTH AVENUE) OVER E.J.&E. AND U.P. R.R. MOMENT SLAB DETAILS
NAME	DATE	
		STRUCTURE NUMBER 022-W029 FAP 307 SECTION 130 R-2 DUPAGE COUNTY STA. 3350+69.00 TO 3356+80.01 SCALE: None DATE: MAY 13, 2011

Sheet SW5 of 8



DRAWN BY: MRK
 CHECKED BY: MJP