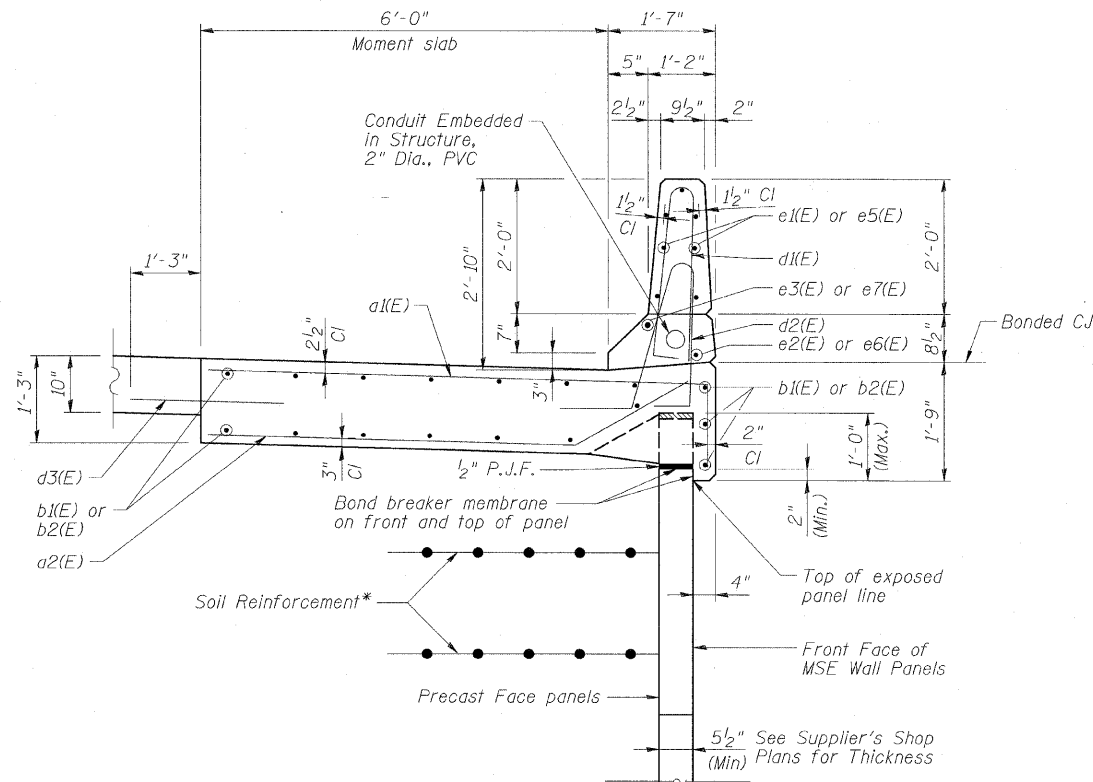


F.A.P. RTE.	SECTION	COUNTY	TOTAL SHEETS	SHEET NO.
307	130 R-2	DUPAGE, KANE	647	522
STA. 3356+37.74		TO STA. 3359+24.72		
FED. ROAD DIST. NO.	ILLINOIS FED. AID PROJECT			

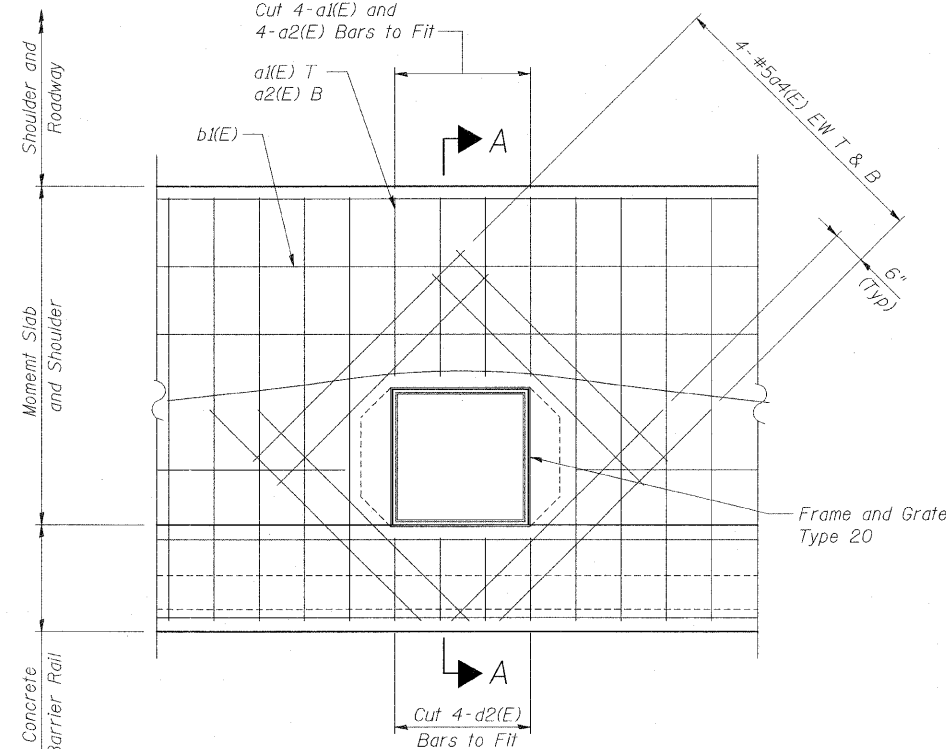
62410

STATE OF ILLINOIS  
 DEPARTMENT OF TRANSPORTATION



**TYPICAL CROSS SECTION THRU MOMENT SLAB & BARRIER**

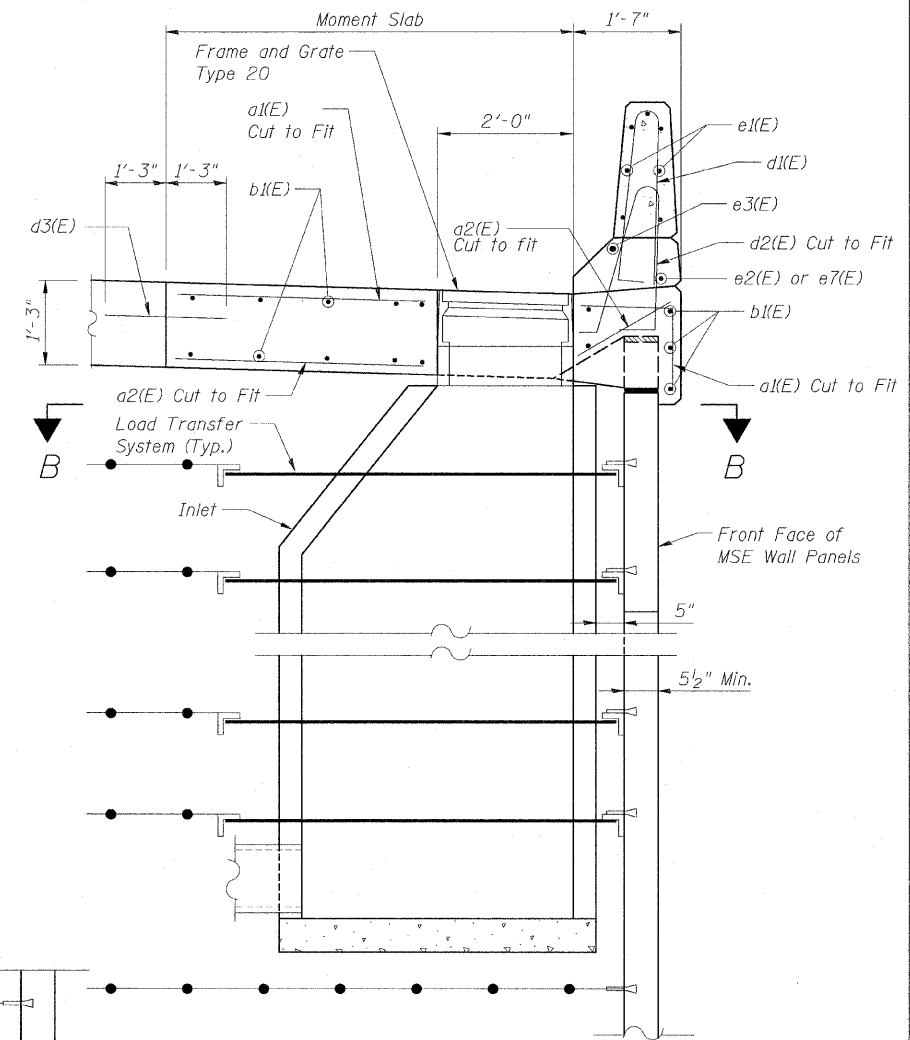
\* The M.S.E. Wall supplier's internal stability design shall account for the anchorage slab's bearing pressure surcharge of 0.24 ksf and horizontal sliding force of 0.5 kips/ft. of wall.



**DETAIL 1-MOMENT SLAB AND BARRIER AT CATCH BASIN**

**NOTES:**

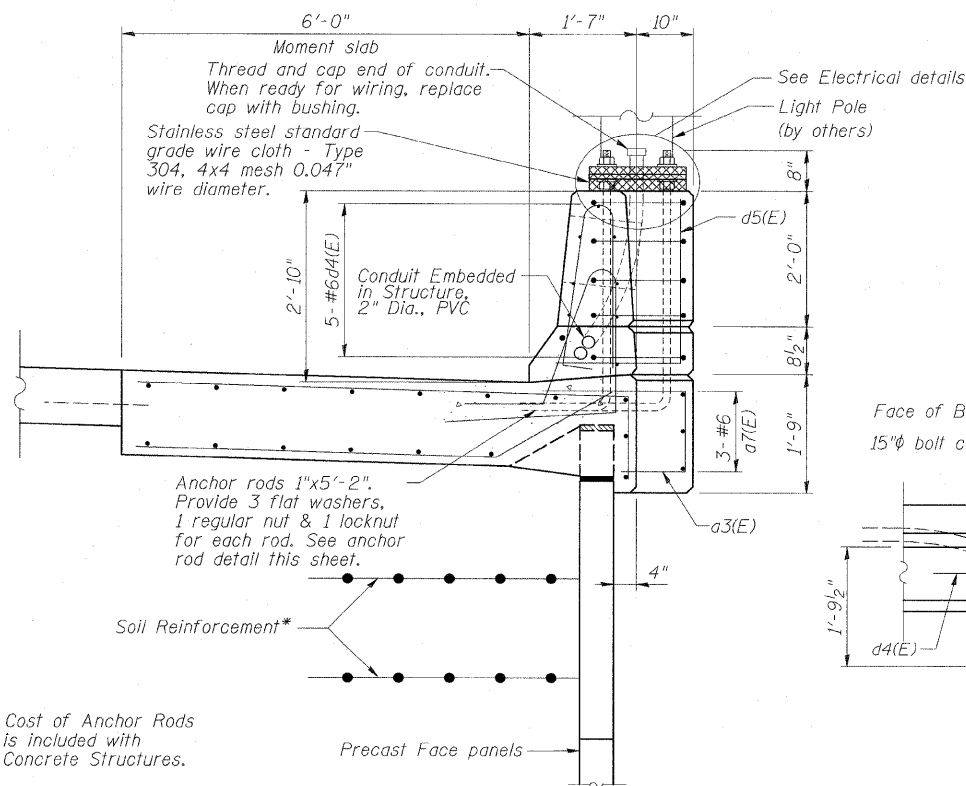
1. Provide minimum 2" clearance between reinforcing bars and Frame and Grate Type 20.



**SECTION A-A**  
 Units 1, 3 and 6

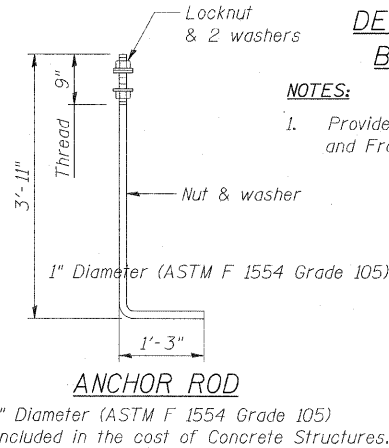
**NOTES:**

1. For General Notes, see Sheet SW2.
2. For Bar Bending Diagrams, see Sheet SW8.



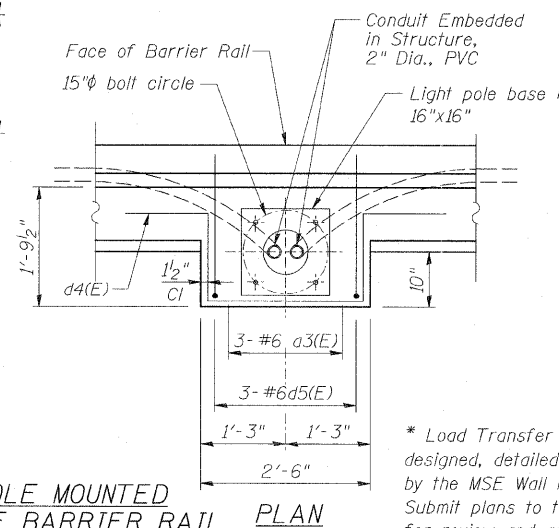
**SECTION**

**LIGHT POLE MOUNTED ON CONCRETE BARRIER RAIL**



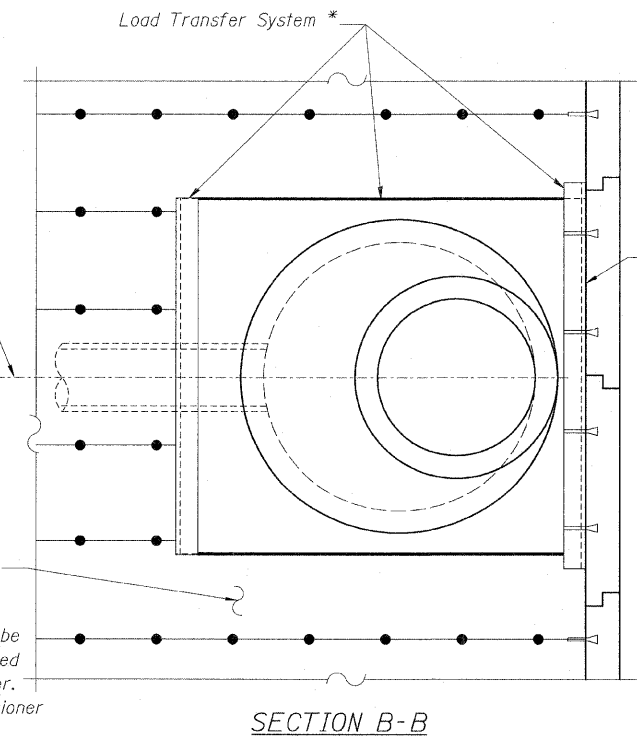
**ANCHOR ROD**

1" Diameter (ASTM F 1554 Grade 105)  
 Included in the cost of Concrete Structures.



**PLAN**

\* Load Transfer System to be designed, detailed and installed by the MSE Wall Manufacturer. Submit plans to the Commissioner for review and approval.



**SECTION B-B**

Note: Cost of Anchor Rods is included with Concrete Structures.

**AECOM**

REVISIONS	
NAME	DATE

F.A.P. ROUTE 307 ILLINOIS ROUTE 64  
 (NORTH AVENUE)  
 OVER E.J.&E. AND U.P. R.R.  
**MOMENT SLAB DETAILS AT DRAINAGE STRUCTURE**  
 STRUCTURE NUMBER 022-W029  
 FAP 307 SECTION 130 R-2  
 DUPAGE COUNTY  
 STA. 3350+69.00 TO 3356+80.01  
 SCALE: None  
 DATE: NOVEMBER 1, 2011  
 DRAWN BY: MRK  
 CHECKED BY: MJP

Sheet SW6 of 8