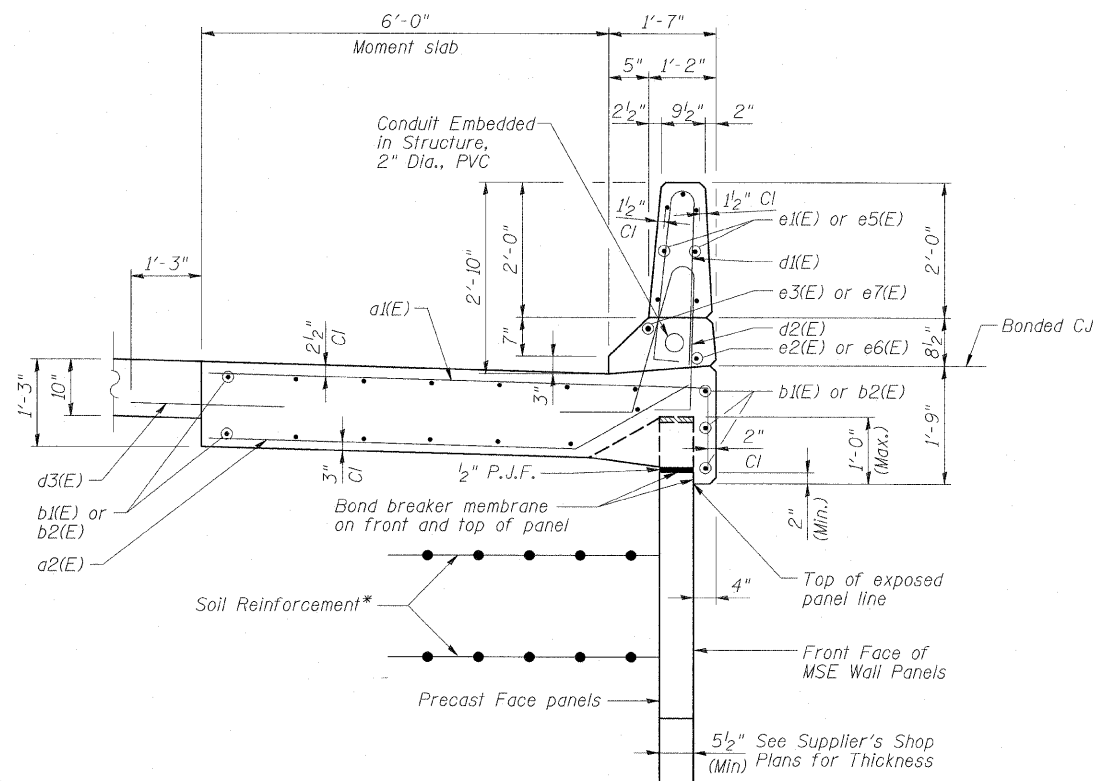


STATE OF ILLINOIS  
 DEPARTMENT OF TRANSPORTATION

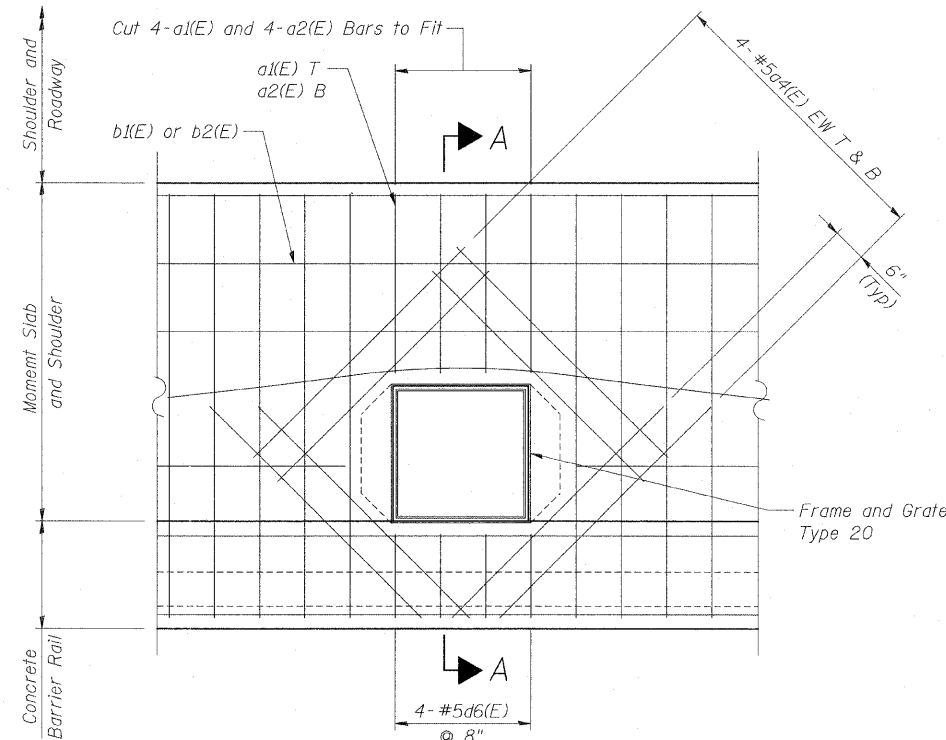
F.A.P. RTE.	SECTION	COUNTY	TOTAL SHEETS	SHEET NO.
307	130 R-2	DUPAGE,KANE	647	531
STA. 3356+37.74 TO STA. 3359+24.72				
FED. ROAD DIST. NO. ILLINOIS FED. AID PROJECT				

62410



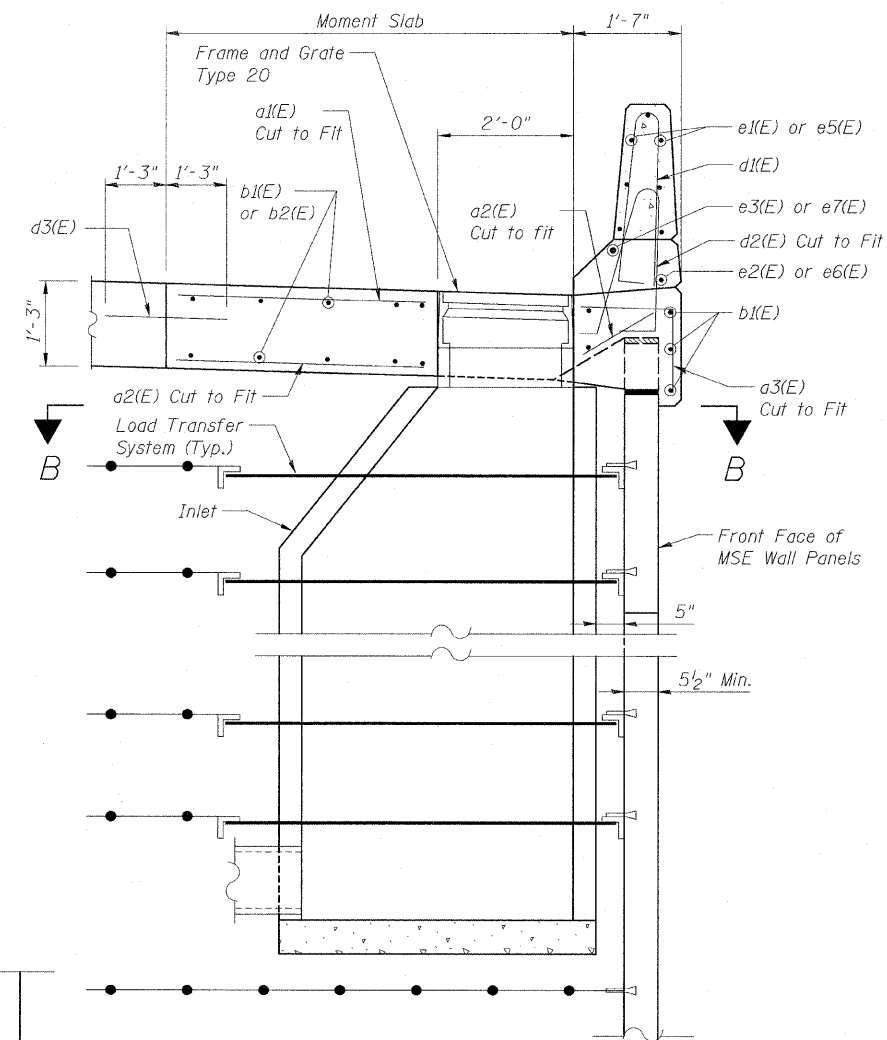
TYPICAL CROSS SECTION  
 THRU MOMENT SLAB & BARRIER

\* The M.S.E. Wall supplier's internal stability design shall account for the anchorage slab's bearing pressure surcharge of 0.24 ksf and horizontal sliding force of 0.5 kips/ft. of wall.



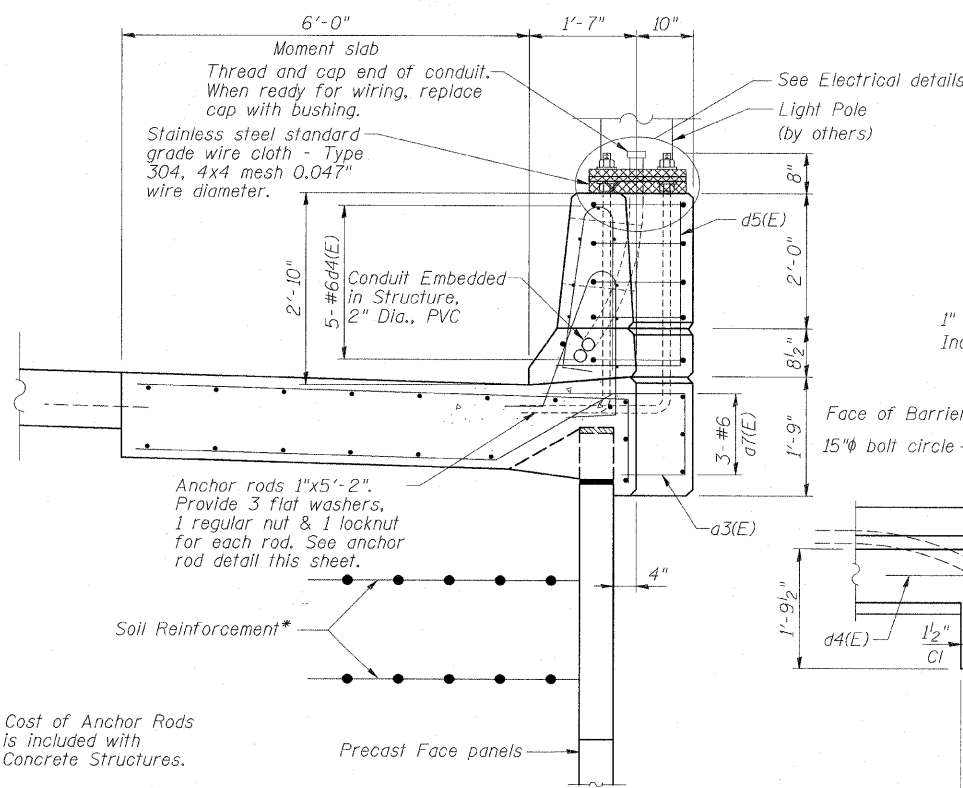
DETAIL 1-MOMENT SLAB AND  
 BARRIER AT CATCH BASIN

NOTES:  
 1. Provide minimum 2" clearance between reinforcing bars and Frame and Grate Type 20.



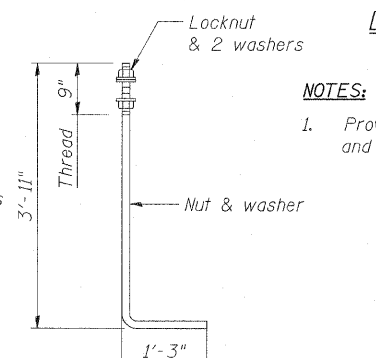
SECTION A-A  
 Units 1, 4, 6 and 8

NOTES:  
 1. For General Notes, see Sheet SE2.  
 2. For Bar Bending Diagrams, see Sheet SE9.



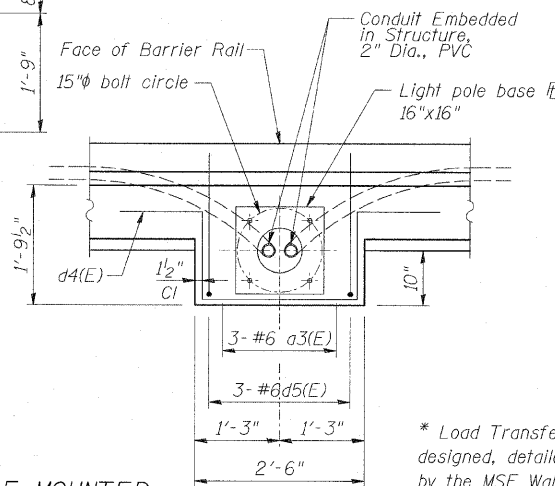
SECTION  
 LIGHT POLE MOUNTED  
 ON CONCRETE BARRIER RAIL

Note: Cost of Anchor Rods is included with Concrete Structures.



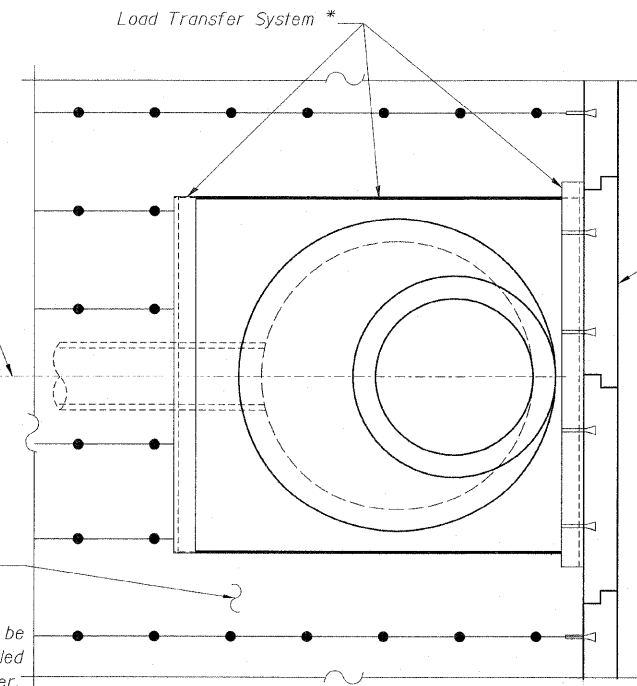
ANCHOR ROD

1" Diameter (ASTM F 1554 Grade 105)  
 Included in the cost of Concrete Structures.



PLAN

\* Load Transfer System to be designed, detailed and installed by the MSE Wall Manufacturer. Submit plans to the Engineer for review and approval.



SECTION B-B

REVISIONS	
NAME	DATE

F.A.P. ROUTE 307 ILLINOIS ROUTE 64  
 (NORTH AVENUE)  
 OVER E.J.&E. AND U.P. R.R.  
 MOMENT SLAB DETAILS  
 AT DRAINAGE STRUCTURE  
 STRUCTURE NUMBER 022-W030  
 FAP 307 SECTION 130 R-2  
 DUPAGE COUNTY  
 STA. 3359+16.23 TO 3366+75.00  
 SCALE: None DRAWN BY: MRK  
 DATE: NOVEMBER 1, 2011 CHECKED BY: MJP

