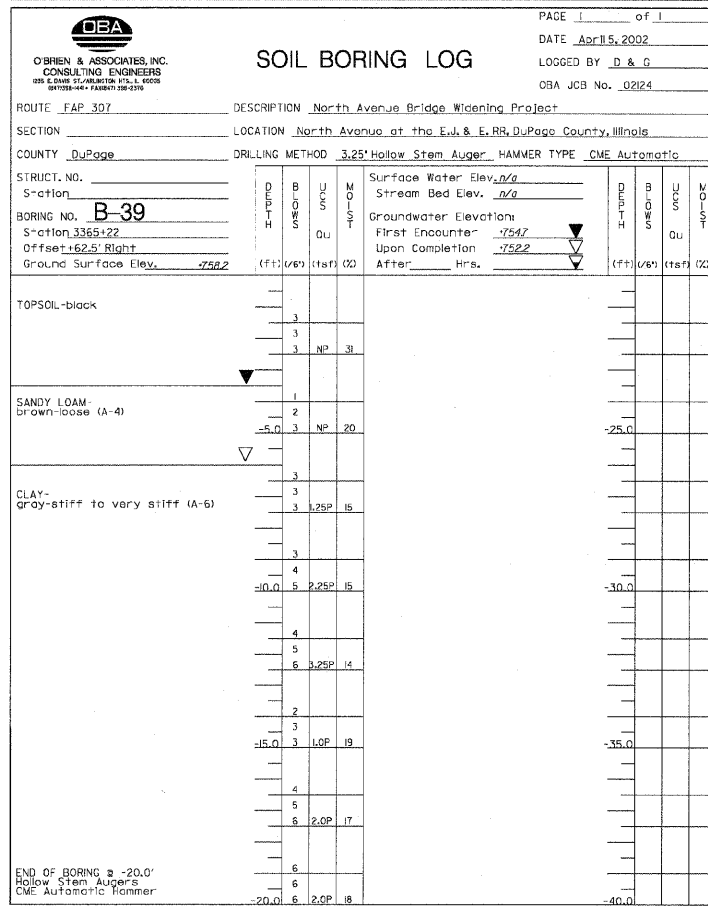
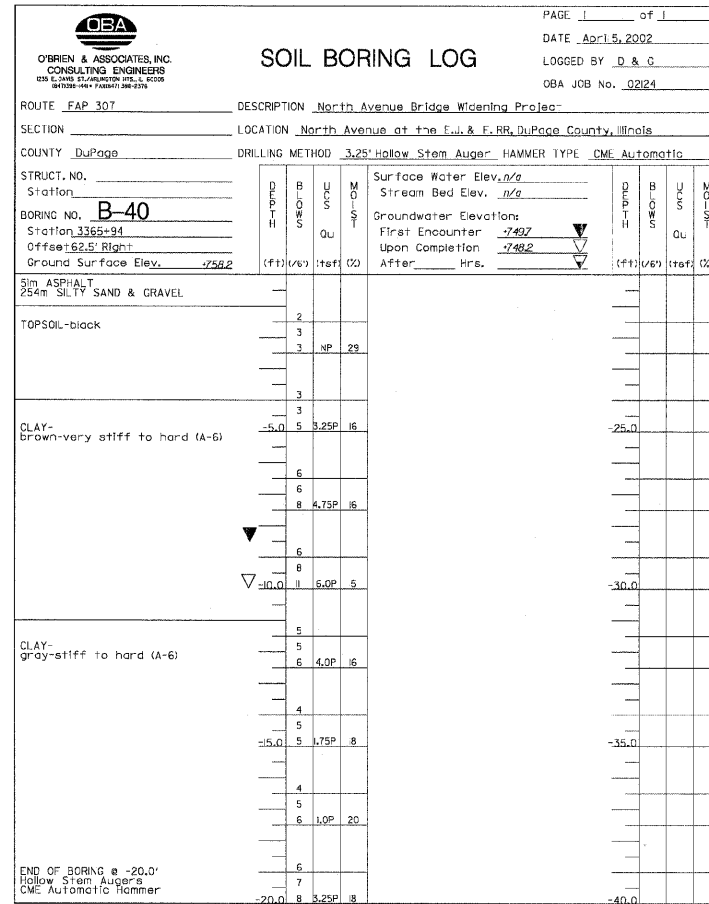
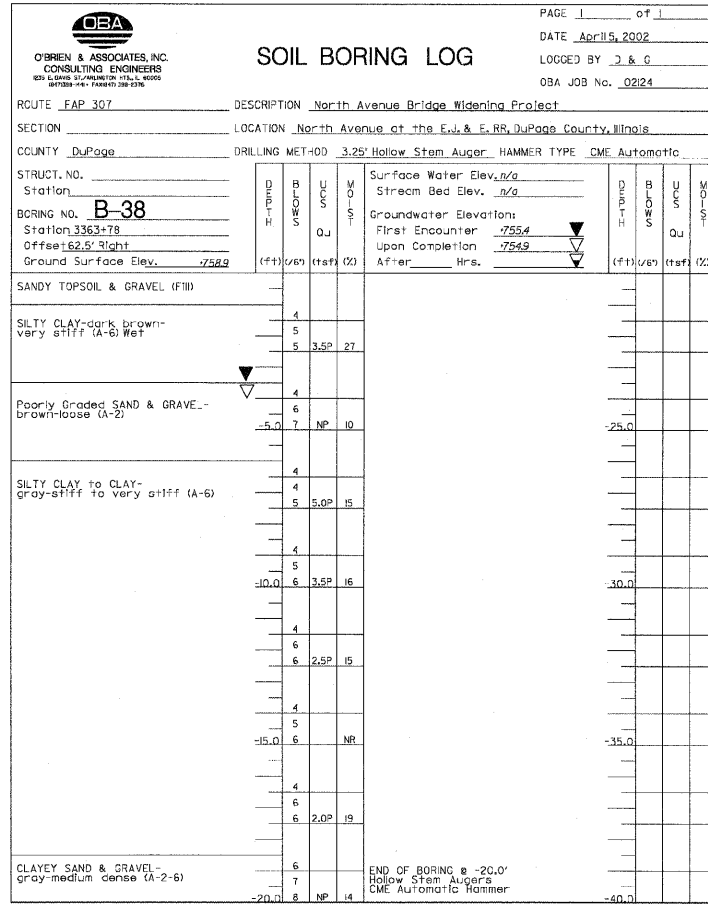


STATE OF ILLINOIS  
 DEPARTMENT OF TRANSPORTATION

F.A.P. RTE.	SECTION	COUNTY	TOTAL SHEETS	SHEET NO.
307	130 R-2	DUPAGE, KANE	647	545
STA. 3356+37.74		TO STA. 3359+24.72		
FED. ROAD DIST. NO.		ILLINOIS FED. AID PROJECT		

62410



- NOTES:**
- For General Notes, see Sheet SE2.
  - For Boring locations, see Sheet SE2.
  - The Unconfined Compressive Strength (UCS) Failure Mode is indicated by (B-Bulge, S-Shear, P-Penetrometer) ST-Shelby Tube Sample VS-Vane Shear Test  
 The SPT (N value) is the sum of the last two blow values in each sampling zone (AASHTO T206)  
 The Unit Dry Weight (pcf) is noted in italics above moist (%)  
 NR-No Recovery

**AECOM**

Sheet SB10 of 10

REVISIONS	
NAME	DATE

F.A.P. ROUTE 307 ILLINOIS ROUTE 64  
 (NORTH AVENUE)  
 OVER E.J.&E. AND U.P. R.R.  
 SOIL BORING LOGS

STRUCTURE NUMBER 022-W030  
 FAP 307 SECTION 130 R-2  
 DUPAGE COUNTY  
 STA. 3359+16.23 TO 3366+75.00

SCALE: None DRAWN BY: MRK  
 DATE: MAY 13, 2011 CHECKED BY: RDP