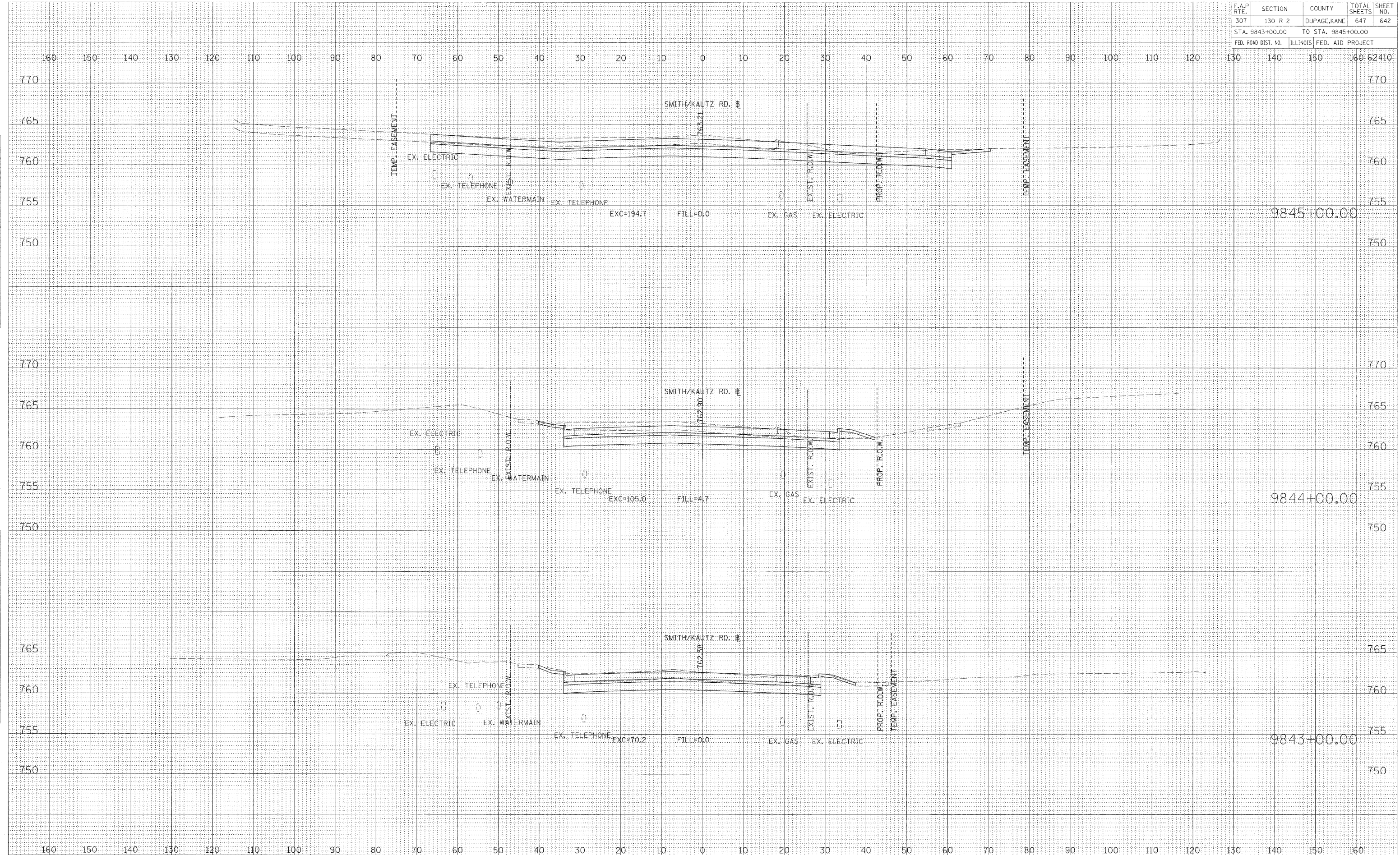


F.A.P. RTE.	SECTION	COUNTY	TOTAL SHEETS	SHEET NO.
307	130 R-2	DUPAGE, KANE	647	642
STA. 9843+00.00		TO STA. 9845+00.00		
FED. ROAD DIST. NO.		ILLINOIS	FED. AID PROJECT	



BY	DATE

FINAL SURVEY	SURVEYED
PLOTTED	
NOTE BOOK	
AREAS CHECKED	

BY	DATE

ORIGINAL SURVEY	SURVEYED
PLOTTED	
NOTE BOOK	
AREAS CHECKED	

CROSS SECTIONS - SMITH AND KAUTZ ROAD