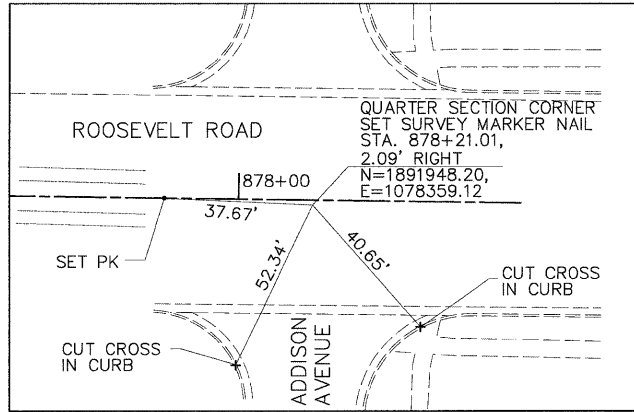
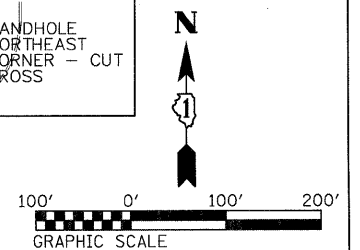
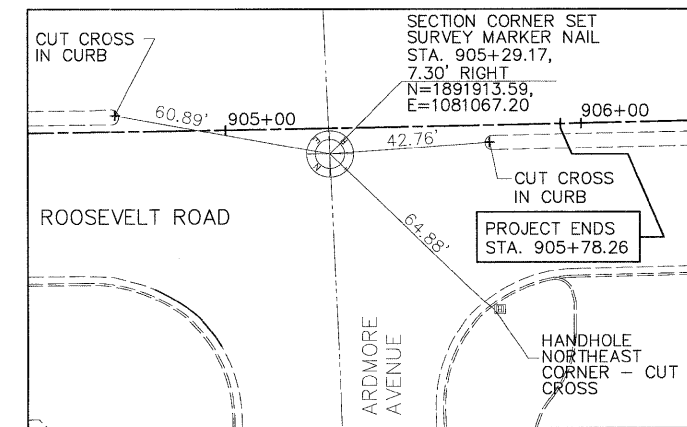
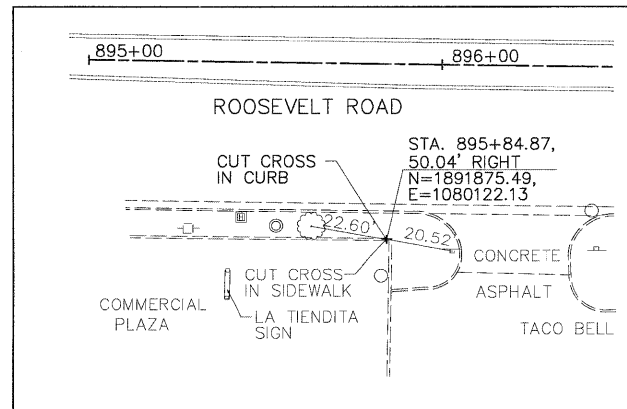
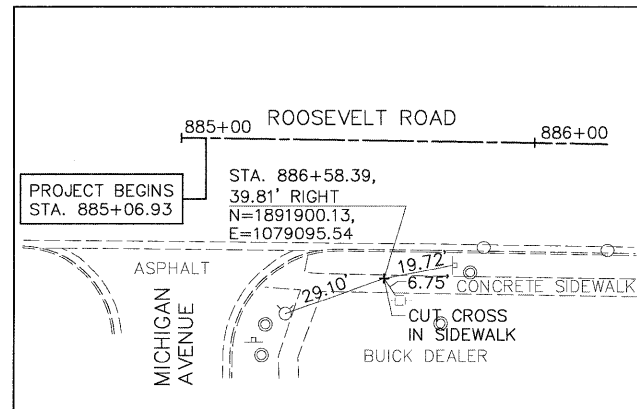
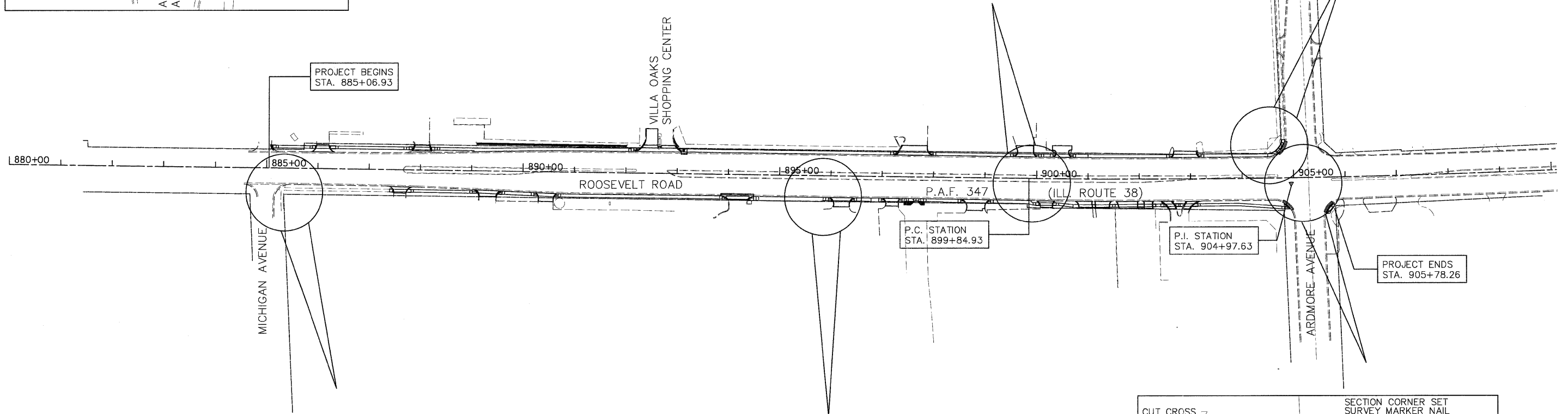
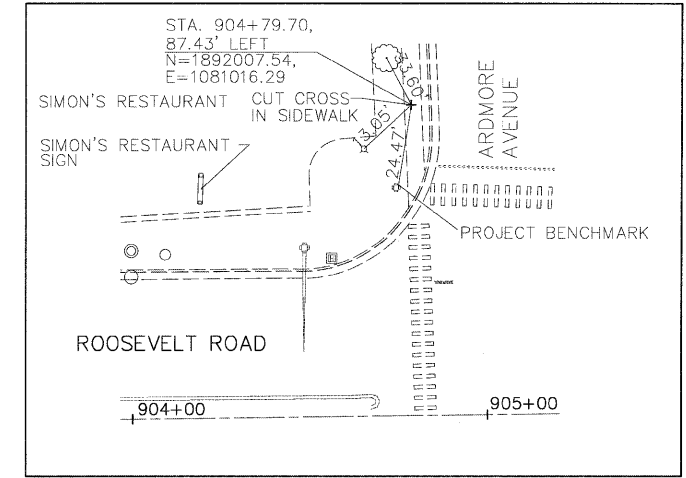
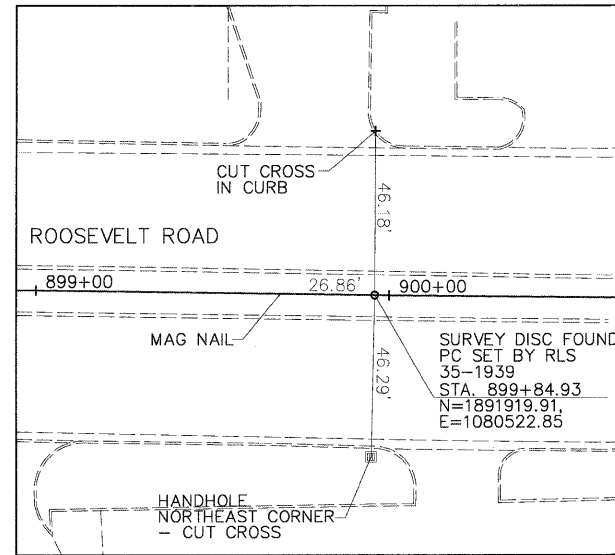


**BENCHMARKS:**  
DUPAGE COUNTY MONUMENT, IN TRAFFIC LIGHT POLE BASE AT THE NORTHWEST CORNER OF ROOSEVELT ROAD AND ARDMORE AVENUE STA. 904+49.04, 46.45' LT., EL=715.75 N.G.V.D. 29 DUPAGE COUNTY DATUM.  
VILLAGE OF VILLA PARK BENCHMARK 11, FEMA RM4 CHISELED SQUARE ON TOP OF NORTHWEST CONCRETE WING WALL OF CULVERT FOR SUGAR CREEK UNDER SUMMIT AVENUE. (E02S11) EL=668.68 N.G.V.D. 29 DUPAGE COUNTY DATUM.



**CURVE DATA:**

P.I. STATION	==	904.97.63	N 1891912.7127	E 1081035.4998
DELTA	==	3°25'00.00"		
TANGENT	==	512.7000		
LENGTH	==	1025.0961		
RADIUS	==	17190.3500		
EXTERNAL	==	7.6439		
LONG CHORD	==	1024.9442		
MID. CHORD	==	7.6405		
P.C. STATION	==	899+84.93	N 1891919.9109	E 1080522.8503
P.T. STATION	==	910+10.02	N 1891936.0795	E 1081547.6670
CHORD BEARING	==	N89°05'46.02"E	N 1909108.5666	E 1080764.1996



FILE NAME = D163197-ah-ATB.dgn	USER NAME = IDOT	DESIGNED - TB	REVISED - 10/24/2011	<b>STATE OF ILLINOIS DEPARTMENT OF TRANSPORTATION</b>	<b>ALIGNMENT, TIES AND BENCHMARKS</b>		F.A.P. RTE. 347	SECTION 02-00077-00-SW	COUNTY DUPAGE	TOTAL SHEETS 73	SHEET NO. 10
PLT SCALE = 1/8" = 100'	CHECKED - DA	REVISIED -	REVISIED -		SCALE: AS SHOWN	PROJECT CMF-0347 (015)	JOB NO. D-91-133-03	CONTRACT NO. 63197		FED. ROAD DIST. NO. ILLINOIS FED. AID PROJECT	
PLT DATE = 10/25/2011	DATE - 06/08/2011	REVISIED -	REVISIED -		SHEET NO. 1 OF 1 SHEETS		STA. 885+07 TO STA. 904+99				